

MPT-Consoles Q50

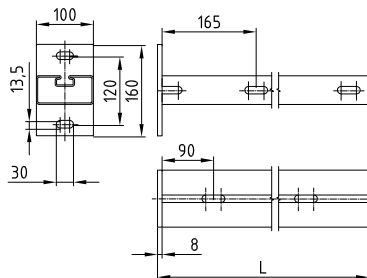
hot-dip galvanised

Field of application

- Consoles for accommodation of pipelines and aggregates in industrial construction, plant building construction and heavy-duty building technology for attachment on floor, wall and ceiling

Advantages

- Baseplate for direct or indirect connection to the structure
- Quick fixing due to continuous mounting slot
- High corrosion protection due to standardised hot-dip galvanising ensures flexible implementation outdoors and indoors
- Clean-cut appearance by the use of MPT-protection caps



| Size | Length L [mm] | Part no. | Sales unit | Pack unit | weight [kg/piece] |
|---------|---------------|----------|------------|-----------|-------------------|
| Q50-2.5 | 500 | 147941 | 1 | pieces | 4.50 |
| | 750 | 147942 | | | 6.25 |
| | 1,000 | 147943 | | | 7.95 |

Technical data of brackets:

| Profile | Dimensions H x W x D | Base plate Material | Admissible steel stress $\sigma_{adm.}$ [N/mm ²] | Support channel Material | Admissible steel stress $\sigma_{adm.}$ [N/mm ²] |
|---------|----------------------|---------------------|--|--------------------------|--|
| | [mm] | | | | |
| Q50-2.5 | 160 x 100 x 8 | S235 | 158 | S235 | 158 |

Load bearing capacities of brackets for bending around the y-axis:

| Profile | Base plate $M_{max.}$ [Nmm] | Length L [mm] | | | | |
|-------------------------|-----------------------------|---------------|-------|-------|-------|-----|
| Max. allowable load [N] | | | | | | |
| Q50-2.5 | 559,674 | 500 | 2,204 | 1,102 | 1,102 | 735 |
| | | 750 | 1,441 | 721 | 721 | 480 |
| | | 1,000 | 1,051 | 526 | 526 | 350 |



The determined loads apply for static loads. Calculation based on Eurocode (EC3).

The safety coefficient $\gamma = 1.48$ takes into account the partial and combination coefficients as well as the safety factor of the material.

For the given values, the permissible steel stress and the maximum permissible deflection $L/150$ are not exceeded, taking the deadweight into consideration.

The load-carrying values refer to the console support. Fastening elements such as plugs and screws, must be chosen in accordance with the loads.