

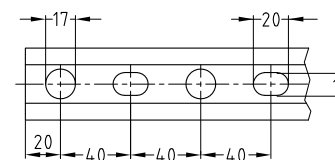
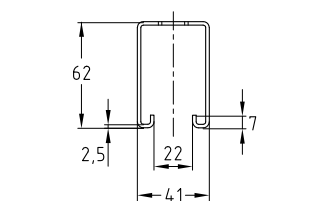
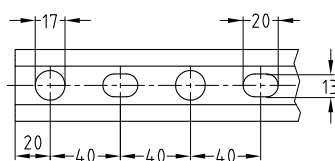
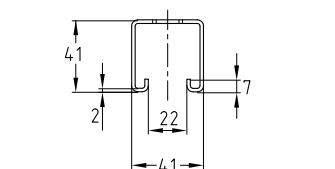
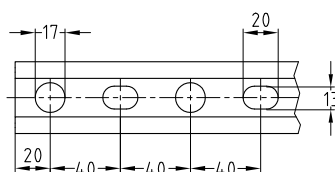
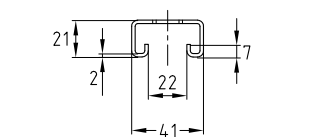
MPR-Support channels

Field of application

- Ideal for pipe installation as support structure for air ducts
- Variety of mounting options in combination with extensive range of system components
- For indoor and outdoor use

Advantages

- Quick and efficient attachment of pipe sections and multiple pipe-ways
- High bending stiffness due to the cross-section design
- Scale marks sideways and on the side with the slot simplify the alignment of the attachment elements during installation and facilitate the measuring and cutting to length of the section on site
- For secure fixing that is adjustable laterally and vertically
- For setting up structures with correctly measured static loads by means of diverse connection components
- Interlocking rail slot for positive locking of attachments
- Clean-cut appearance by the use of MPR-protection caps



Profile 41/21/2.0



Profile 41/41/2.0



Profile 41/62/2.5

| Profile | Length [mm] | Material | Part no. | Sales unit | Pack unit |
|-----------|-------------|----------|----------|------------|-----------|
| 41/21/2.0 | 2,000 | V4A | 154393 | 1 | pieces |
| | 6,000 | | 154395 | | |
| 41/41/2.0 | 2,000 | | 154396 | | |
| | 6,000 | | 154398 | | |
| 41/62/2.5 | | | 154404 | | |