

MPR-VARIO-Saddle support

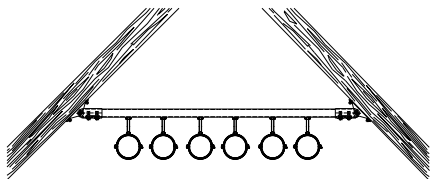
hot-dip galvanised

Field of application

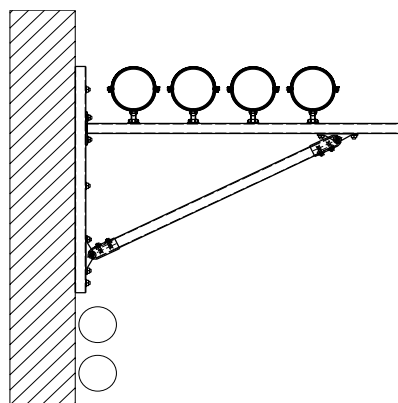
- Ideal for attachment to inclined roof trusses, vaults and in round cable shafts
- Suitable for outdoor use

Advantages

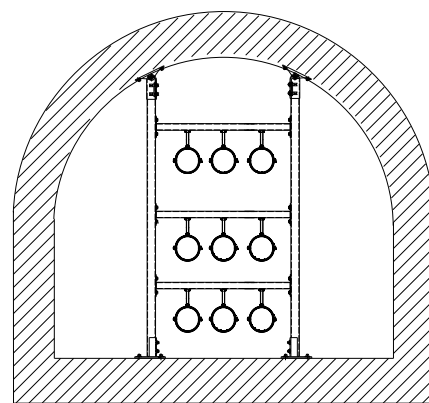
- Variable angle adjustment possible during installation
- Simple and quick installation due to pre-installed screws and MPR-Threaded plate
- Attachment to the slot of support channels 41/41 possible in all directions
- Positive-fit joining due to interlocking MPR-Support channels and MPR-Threaded plates



Attachment of a pipe run to an inclined roof truss



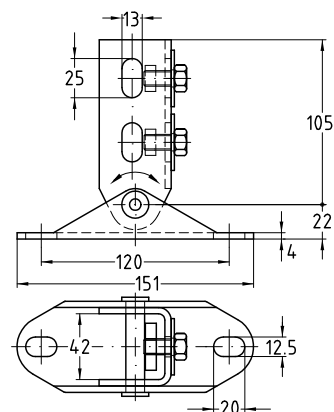
Pipes installed on a wall hanger with diagonal strut



Installation of brackets in vaults or round cable ducts and shafts

Completely pre-assembled:

- 1 MPR-VARIO-Saddle support
- 2 MPR-Threaded plates M10
- 2 Hexagonal head bolts M10
- 2 Washers



For support channels	Minimum angle [°]	Part no.	Sales unit	Pack unit
41/21–41/62	20	160007	1	pieces