

Deltaweld® 350 Systems

Issued March 2025 • Index No. DC/16.5

MIG Welding
Systems



Quick Specs

Heavy Industrial Manufacturing

General manufacturing
General fabrication
Structural steel fabrication
Transportation
Sheet metal fabrication
Light-gauge tube and sheet

Processes

MIG (GMAW)
Flux-cored (FCAW)
Accu-Pulse® (GMAW-P)*
Versa-Pulse™ (GMAW-P)**
High-deposition MIG (GMAW)**
RMD®**

*With Intellx™ Pro and Intellx™ Elite feeders.

**With Intellx™ Elite feeders.

Auxiliary Power 115 V standard

Input Power

208/230/460 V or 575 V, 3-phase, 60 Hz
230 V, 1-phase, 60 Hz

Rated Output

350 A at 60% duty cycle

Output Range 20–400 A, 10–38 V

The standard in manufacturing for welders of all skill levels,
with Intellx™ wire feeder options that deliver application-specific benefits.

Dedicated wire feeder options

- Intellx Basic feeder with arc control means welders can produce better welds with minimal parameter adjustments.
- Intellx Pro feeder adds EZ-Set, Accu-Pulse, memory buttons and steel and stainless weld programs.
- Intellx Elite feeder adds additional weld programs, intuitive display with on-demand graphics and more control.

Easy to use

EZ-Set simplifies parameter setup based on material thickness, removing complexity.



Pulse capable

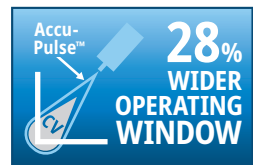
Accu-Pulse offers a more forgiving arc and compensates for variations in operator technique, providing a wider operating window.

Ready to weld

Reduce the time and hassle of setting up welding systems. Make your move to a weld-ready Deltaweld MIGRunner™.

Insight

Optional Welding Intelligence™ weld monitoring system. Get more done, produce higher-quality welds and control costs. See page 6 for more information.



Deltaweld 350 MIGRunner™ with single-wire Intellx™ Elite feeder shown with optional industrial water cooler (sold separately).



Power source is warrantied for three years, parts and labor.
Original main power rectifier parts are warrantied for five years.
Gun warrantied for 90 days, parts and labor.



Miller Electric Mfg. LLC
An ITW Welding Company
1635 West Spencer Street
P.O. Box 1079
Appleton, WI 54912-1079 USA

Equipment Sales US and Canada
Phone: 866-931-9730
International Phone: 920-735-4554

MillerWelds.com
f X y o i n



Deltaweld® 350 Features

Wind Tunnel Technology™

Internal air flow that protects electrical components and PC boards from dirt, dust, debris — greatly improving reliability.

Fan-On-Demand™ operates only when needed reducing noise, power consumption, and the amount of airborne contaminants pulled through the machine.



Deltaweld 350 with Insight



Standard 115-volt auxiliary power provides 15 amps of circuit-breaker-protected power.



ArcConnect™ is a next generation communication that utilizes high speed signals to improve weld performance and allow point-of-use controls to be located at the feeder.

Backwards compatibility. Models are available with both ArcConnect and the standard Miller® 14-pin for use with older Miller® wire feeders.



Deltaweld 350 with meters, 14-pin receptacle and Insight



NEW! Industrial cart is more robust with stowaway dual cylinder rack and lockable front casters with oversized rear wheels. Included in MIGRunner packages or sold separately.



NEW! Optional industrial water cooler plugs directly into the 115-volt receptacle on the back of the Deltaweld power source and slides into bottom of industrial cart. Has 2.5-gallon coolant capacity with easy front fill, external filter, and power and flow indicators.

Intellx™ Feeder Features



Balanced-pressure drive-roll design and tensioners feed wire in its truest and straightest form for consistent feedability, resulting in better welding performance.

Accu-Mate™ connection aligns the gun perfectly in the drive-roll carrier — preventing the gun from being pulled loose and providing consistent wire feeding.

Drive rolls and guides are common with other Miller® industrial feeders (use existing, not new parts).

Inlet guide and intermediate guide installation is toolless.

Rotatable drive assembly allows operator to rotate the drive, eliminating severe bends in the wire feed path. This extends gun-liner life and aids in feeding difficult wires.



NEW! Single-wire feeder swivel kit for convenience and function, reducing wear on gun and liner assembly. It includes integrated handle, MIG gun and cable holders, and moves with the MIG gun, allowing operator to see the front of the feeder and which parameters are selected.



Intellx Pro single-wire feeder

- Memory buttons** for quick program recall
- Display and controls** for volts/arc length, wire feed speed, and EZ-Set (if selected)
- Arc control** to fine tune the welding arc
- LCD setup screen** for easy selection of welding processes
- Jog and purge button**
- Trigger hold, trigger select, preflow and postflow buttons**



Intellx Elite single-wire feeder

- Soft keys** to easily navigate menus
- Full-color LCD screen** to simplify the setup and operation of a fully featured feeder
- Arc control** to fine tune welding arc
- Memory buttons** for quick program recall
- Trigger connections** for standard MIG gun and XR-Aluma-Pro™ Plus and XR™-Pistol Plus push-pull guns



Dual-wire models allow two different wire types to be available on one feeder, avoiding downtime from changing spools and drive rolls.

Intellx™ Feeders Comparison



Feature	Intellx™ Basic Feeder	Intellx™ Pro Feeder	Intellx™ Elite Feeder
Digital meters	■	■	Full color LCD
Remote voltage	■	■	■
Wire feed speed	■	■	■
Arc control	■	■	■
Trigger hold	■	■	■
Wire jog and purge	■	■	■
Wire feed speed feedback	■	■	■
Four drive rolls	■	■	■
Dual-wire models	■	■	■
Rotatable drive	■	■	■
Up to 60 lb. spool	■	■	■
MIG process	■	■	■
Insight Core™ compatible*	■	■	■
Insight Centerpoint™ Basic compatible*	■	■	■
EZ-Set MIG		■	■
EZ-Set Accu-Pulse®		■	■
Trigger select		■	■
Preflow and postflow		■	■
Memory slots		2	8
Out-of-box programs (steel/stainless)		■	■
Out-of-box programs (aluminum/nickel/copper nickel/silicon bronze/titanium)			■
EZ-Set Versa-Pulse™, high-deposition MIG and RMD®			■
XR™ Plus push-pull gun compatible			■
Profile Pulse™			■
Weld sequence control			■
Trigger dual schedule			■
Dual schedule switch support			■
Parameter limits			■
Memory lockouts			■
System lock			■
Wire retract			■
Auto thread and auto purge			■
Cloning and custom weld library			■
Insight Centerpoint™ Premium compatible*			■

*Insight module required.

Processes include:

- MIG
- EZ-Set MIG (Intellx Pro and Intellx Elite)
- EZ-Set Accu-Pulse® (Intellx Pro and Intellx Elite)
- EZ-Set Versa-Pulse™ (Intellx Elite)
- EZ-Set High-deposition MIG (Intellx Elite)
- EZ-Set RMD® (Intellx Elite)



Intellx Pro and Intellx Elite feeder programs include:

- Different wire sizes
- Different gas types
- Flux-cored
- Metal-cored
- Steel
- Stainless steel

Additional Intellx Elite feeder programs include:

- Aluminum
- Nickel
- Copper nickel
- Silicon bronze
- Titanium

Deltaweld® 350 System Processes

MIG

- Lower spatter than traditional MIG welders
- Better arc performance with silicon bronze and coated materials

Accu-Pulse®*

- The most popular process for majority of industrial welding applications
- Most adaptive arc on 16 gauge (1.6 mm) and thicker
- Designed for all weld positions

Versa-Pulse™**

- Fast, low-heat, low-spatter process — for materials 1/4 inch (6.35 mm) and thinner
- Great for gap filling
- Shortest arc length / lowest pulse voltage for lower heat and lower spatter at higher speeds


High-deposition MIG (HD MIG)**

- Higher deposition rates than standard spray transfer on thicker materials
- Designed for welding applications in which spray transfer is preferred

RMD®**

- Lowest heat process, best for gap handling
- Limited travel speed

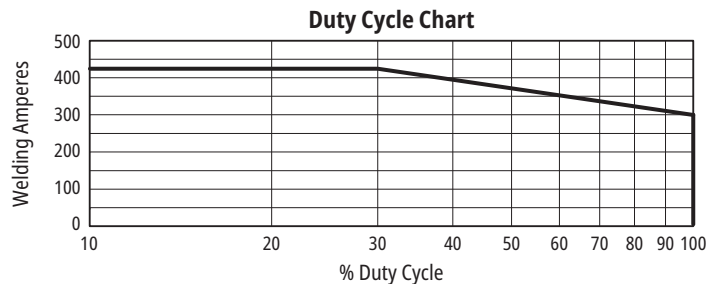
Best For	Standard Spray	HD MIG**	Accu-Pulse*	Versa-Pulse**	Short Circuit	RMD**
Deposition	A	A	A	B	D	D
Gap filling	D	D	B	B	A	A
Low heat input	D	C	B	A	A	A
Out-of-position welds			A	B	B	B
Low spatter	A	A	A	B	C	B
Thick metals	A	A	A	C	D	D
Thin metals			B	A	A	A
Increased travel speed	A	A	A	A	B	C

HOT  **COLD**

Ratings A, B, C, and D are relative values. An "A" rating indicates a best fit between your performance needs and process. A "blank" rating indicates that the process is not recommended for that application.

*With Intellix™ Pro and Intellix™ Elite feeders. **With Intellix™ Elite feeders.

Deltaweld® 350 Performance Data



Deltaweld® 350 Specifications (Subject to change without notice.)



Mode	Input Type	Volt Range	Rated Output	Amps Input at Rated Output, 60 Hz						Dimensions (Includes lift eye)	Net Weight
				208 V	230 V	460 V	575 V	KVA	KW		
MIG (GMAW)	3-phase	10–38 V	300 A at 29 VDC, 100% duty cycle	29.3	26.5	14.6	12.4	11.6 (12.4*)	10.0 (9.7*)	H: 22.36 in. (568 mm) W: 15.35 in. (390 mm) D: 29.15 in. (740 mm)	115 lb. (52.2 kg)
			350 A at 31.5 VDC, 60% duty cycle	36.7	33.4	18.1	15.1	14.5 (15.1*)	12.5 (12.4*)		
			425 A at 35.25 VDC, 30% duty cycle	50.0	45.1	23.1	19.1	18.5 (19.1*)	16.9 (16.6*)		
	1-phase	10–38 V	225 A at 25.25 VDC, 100% duty cycle	—	38.6	—	—	8.86	6.79		
			250 A at 26.5 VDC, 60% duty cycle	—	45.5	—	—	10.45	7.96		

*KVA and KW for 575-volt model.

 Certified by Canadian Standards Association to both the Canadian and U.S. Standards.

Intellix™ Feeder Specifications (Subject to change without notice.)



Input Power	Welding Power Source	Input Welding Circuit Rating	Wire Feed Speed	Wire Diameter Capacity	Maximum Spool Size Capacity	Dimensions (H x W x D)	Net Weight
50 VDC	Deltaweld 350 or 500	600 A at 113 VDC, 60% duty cycle	50–780 ipm (1.3–19.8 m/min.)	.023–5/64 in. (0.6–2.0 mm) Elite model only: Aluminum: .035–1/16 in. (0.9–1.6 mm)	18 in. (457 mm) 60 lb. (27 kg)	Single-wire: 16.25 x 12.38 x 27.88 in. (413 x 314 x 708 mm) Dual-wire: 14 x 18 x 34.5 in. (356 x 457 x 876 mm)	Single-wire: 44.8 lb. (20.3 kg) Dual-wire: 77 lb. (34.9 kg)

 Certified by Canadian Standards Association to both the Canadian and U.S. Standards.

With an Insight weld monitoring system you can get more done, produce higher-quality welds and control costs.

Insight Core™

Insight Core is an easy-to-use welding information solution that gives visibility into your operation so you can improve productivity.

- **Measure welding productivity.** See each welder's arc-on time to set baselines, plan improvements and measure goals.
- **View easy-to-understand reports.** Dashboards show trends and develop reports. Compare welders, cells and plants.
- **Identify welding costs.** Make improvements to reduce expenses.
- **Easily install and use.** Just connect it to the internet. View secure data on any web-connected device anywhere.



Insight Centerpoint™ (Purchased license(s) of Centerpoint required.)

On-premises application providing productivity/utilization metrics, capture of welding parameters, operator weld sequence governance, and integration with enterprise IIoT solutions. Scalable to end user needs.

- **Measure welding productivity.** See each welder's arc-on time to set baselines and plan improvements. Capture activities to understand downtime reasons.
- **Govern operator tasks.** Through an easy-to-use operator interface direct welding and non-welding tasks to follow standard work practices, reduce out of sequence welds, and prevent missing welds.
- **Reduce training costs.** Utilize Centerpoint as the "Digital Mentor" to train new welders on proper production steps freeing up senior personnel for more productive activities.
- **Configure weld process remotely.** Full fleet management allows configuration of Deltaweld settings from Centerpoint.

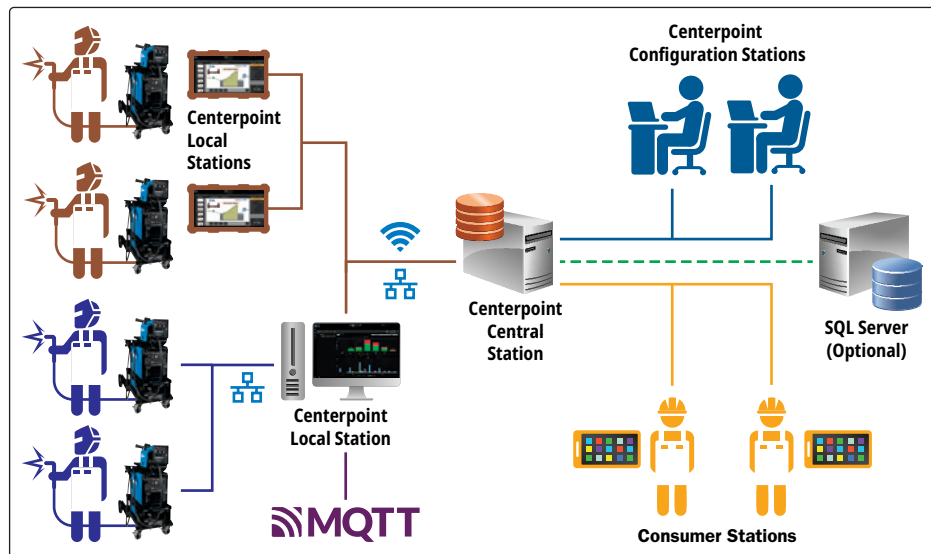
Modes of operation

- **Basic mode** included at no cost.
- **Premium mode** requires a purchased capability key for each Deltaweld.

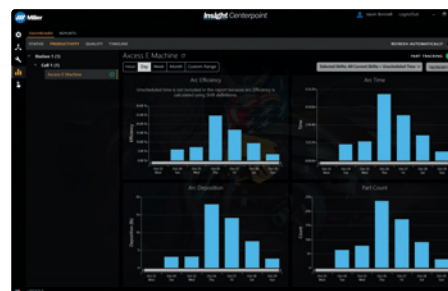
301485 Centerpoint v10 Single License

301703 Centerpoint Basic Capability Activation

301490 Centerpoint Premium Capability Activation



▲ Premium mode ▼ Basic mode



Learn more at MillerWelds.com/insight

Deltaweld® 350 MIGRunner™ Packages

951000138
package shown



951000141
package shown



951000143
package shown



Deltaweld 350 MIGRunner Packages with Intellix™ Basic Feeder

951000138 MIGRunner with single-wire Intellix Basic

951000139 MIGRunner with dual-wire Intellix Basic

Packages include:

- Deltaweld power source (907747) with factory-installed industrial cart with stowaway dual cylinder rack
- Intellix Basic single- **OR** dual-wire feeder
- 15 ft. (4.6 m) Bernard® BTB Gun 400 A (two with dual-wire feeder) with AccuLock™ consumables
- Factory-installed swivel kit with integrated handle, cable and gun holders, and chains for gas cylinders
- Cart accessory kit for single- or dual-wire feeders consisting of flowmeter regulator with 5 ft. (1.5 m) gas hose (two with dual-wire feeder), 10 ft. (3 m) 4/0 feeder weld cable with lugs, 15 ft. (4.6 m) work cable with 600-amp C-clamp, and 9 ft. (2.7 m) ArcConnect control/motor cable
- .035/.045 in. V-groove drive rolls
- Quick-setup guide

Deltaweld 350 MIGRunner Packages with Intellix™ Pro Feeder

951000140 MIGRunner with single-wire Intellix Pro

951000141* MIGRunner with Insight and single-wire Intellix Pro

951000197 MIGRunner with dual-wire Intellix Pro

Packages include:

- Deltaweld power source (907747, or 907747002 on Insight package) with factory-installed industrial cart with stowaway dual cylinder rack
- Intellix Pro single- **OR** dual-wire feeder
- 15 ft. (4.6 m) Bernard® BTB Gun 400 A (two with dual-wire feeder) with AccuLock™ consumables
- Factory-installed swivel kit with integrated handle, cable and gun holders, and chains for gas cylinders
- Cart accessory kit for single- or dual-wire feeders consisting of flowmeter regulator with 5 ft. (1.5 m) gas hose (two with dual-wire feeder), 10 ft. (3 m) 4/0 feeder weld cable with lugs, 15 ft. (4.6 m) work cable with 600-amp C-clamp, and 9 ft. (2.7 m) ArcConnect control/motor cable
- .035/.045 in. V-groove drive rolls
- Quick-setup guide

**Includes Insight Core™ and Insight Centerpoint™ Basic mode. Insight Centerpoint Basic mode requires Centerpoint license(s).*

Deltaweld 350 MIGRunner Packages with Intellix™ Elite Feeder

951000142 MIGRunner with single-wire Intellix Elite

951000143** MIGRunner with Insight and single-wire Intellix Elite

951000144 MIGRunner with dual-wire Intellix Elite

951000145 MIGRunner with single-wire Intellix Elite and push-pull gun

951000146 MIGRunner with dual-wire Intellix Elite and push-pull gun

Packages include:

- Deltaweld power source (907747, or 907747002 on Insight package) with factory-installed industrial cart with stowaway dual cylinder rack
- Intellix Elite single- **OR** dual-wire feeder
- **Push-only gun packages:** 15 ft. (4.6 m) Bernard® BTB Gun 400 A (two with dual-wire feeder) with AccuLock™ consumables
- **Push-pull gun packages:** 25 ft. (7.6 m) XR-Aluma-Pro™ Plus push-pull gun (and 15 ft. [4.6 m] Bernard® BTB Gun 400 A with AccuLock™ consumables on dual-wire feeder)
- Factory-installed swivel kit with integrated handle, cable and gun holders, and chains for gas cylinders
- Cart accessory kit for single- or dual-wire feeders consisting of flowmeter regulator with 5 ft. (1.5 m) gas hose (two with dual-wire feeder), 10 ft. (3 m) 4/0 feeder weld cable with lugs, 15 ft. (4.6 m) work cable with 600-amp C-clamp, and 9 ft. (2.7 m) ArcConnect control/motor cable
- **Push-only gun packages:** .035/.045 in. V-groove drive rolls
- **Push-pull gun packages:** .035/.047 U-groove drive rolls (and .035/.045 in. V-groove drive rolls with dual-wire feeder)
- Quick-setup guide

***Includes Insight Core™ and Insight Centerpoint™ Basic mode. Insight Centerpoint Basic mode requires Centerpoint license(s). Optional Insight Centerpoint Premium (301490) can be added for use with Intellix Elite feeder/ROI.*

Genuine Miller® Accessories



Industrial Cart 301758

Robust cart features small footprint, stowaway dual-cylinder rack and lockable front casters with oversized rear wheels. Industrial cooler (sold separately) integrates into bottom portion of cart.



Cart Accessory Kit 301528

Single-wire feeder kit for use with running gear 301523. See note below for dual-wire feeder kit. Consists of flowmeter regulator with 5-foot (1.5 m) gas hose, 10-foot (3 m) 4/0 feeder weld cable with lugs, 15-foot (4.6 m) work cable with 600-amp C-clamp, and 9-foot (2.7 m) ArcConnect control/motor cable. Dual kit comes with an additional flowmeter regulator and gas hose.

Note: For dual-wire feeder kit both 301528 and 301579 are required.



Stationary Handle Kit 301529

Allows easy movement and portability of the power source.

Note: Stationary handle kit is not compatible with feeder swivel kit below.



Feeder Swivel Kit 301838

For single- and dual-wire feeders. Allows feeder to mount to the top of Deltaweld. Includes integrated handle, MIG gun and cable holders.

Note: ONLY the single-wire feeder can swivel.



Hanging Bail 058435

Used for suspending feeder over work area.



Spool Covers

295231 For single-wire feeders and left side of dual-wire feeders

090389 For right side of dual-wire feeders
For 12-inch (305 mm) spool.

Note: Spool covers cannot be installed if the wire drive assembly is in a rotated position.

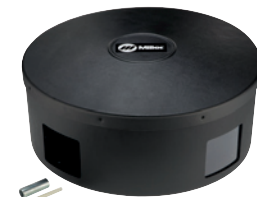
Spool Adapter 047141

For use with 14-pound (6.4 kg) spool of Lincoln self-shielding wire.



Wire Reel Assembly 108008

For 60-pound (27 kg) coil of wire.



Reel Covers

195412 For single-wire feeders and left side of dual-wire feeders

091668 For right side of dual-wire feeders
For 60-pound (27 kg) coil. Helps to protect the welding wire from dust and other contaminants.

Note: Reel covers cannot be installed if the wire drive assembly is in a rotated position.



ArcConnect Control/Motor Cables

280471009 9 ft. (2.7 m)

280471015 15 ft. (4.6 m)

280471025 25 ft. (7.6 m)

280471050 50 ft. (15.2 m)

280471075 75 ft. (22.9 m)

280471100 100 ft. (30.5 m)

280471150 150 ft. (45.7 m)

Connects power source directly to feeder or remote operator interface.

Note: Cables cannot be joined together to create longer lengths and extension cables are not available.



Work Sense Leads (voltage sense)

300461 25 ft. (7.6 m)

300462 50 ft. (15.2 m)

When connected from the back of the wire feeder to the workpiece, the work

sense lead provides accurate voltage feedback on the wire feeder display, and compensates for any voltage drop from the weld cables.



AccuLock™ Nozzle N-A3412C

Required for high-deposition MIG (HD MIG) process when using Bernard® BTB gun with AccuLock consumables.

Coolant Systems



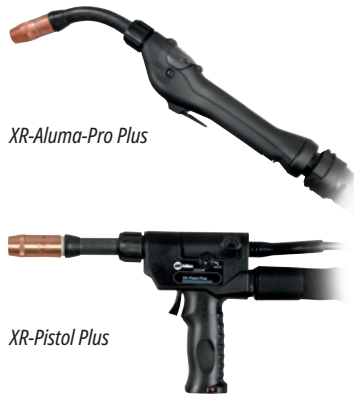
Industrial Water Cooler 301759 115 V

2.5-gallon cooler for use with water-cooled torches rated up to 600 amps. Plugs directly into the 115-volt receptacle on the back of the Deltaweld power source and slides into bottom of new cart. Features easy front fill, external filter, and power and flow indicators.

Coolant 043809

Sold in cases of four one-gallon recyclable plastic bottles. Miller coolants contain a base of ethylene glycol and deionized water to protect against freezing to -37 degrees Fahrenheit (-38°C) or boiling to 227 degrees Fahrenheit (108°C). Also contains a compound that resists algae growth.

XR™ Plus Push-Pull Guns (ONLY for use with Intellix™ Elite feeder, Elite ROI/remote wire drive or Elite Swingarc™ boom-mounted feeder.)



XR-Aluma-Pro Plus

XR-Pistol Plus

XR-Aluma-Pro™ Plus Guns

Air-Cooled

301575 15 ft. (4.6 m)
301574 25 ft. (7.6 m)
301739 35 ft. (10.7 m)

Water-Cooled

301576 15 ft. (4.6 m)
301577 25 ft. (7.6 m)
301740 35 ft. (10.7 m)

XR™-Pistol Plus Guns

Air-Cooled

300753 15 ft. (4.6 m)
300754 25 ft. (7.6 m)

Water-Cooled

300757 25 ft. (7.6 m)

Available in air- or water-cooled versions in multiple lengths for extended reach with trouble-free, reliable feeding.

Aluminum-series-specific tension setting ensures smooth wire feeding performance with 4000 or 5000 series aluminum wires.

Replaceable feed cable liner is designed to provide consistent arc performance. It also reduces parts cost and service time by allowing a simple means of removing and replacing liner and not the complete feed cable.

Isolated common knurled drive roll helps reduce wear, reducing down time and cost.

Easy-to-rotate self-seating head tube allows for better access into tight spots, providing excellent current transfer.

Serviceability. These guns feature a full-length hook-and-loop seamed leather jacket with integrated strain reliefs for easy cable maintenance and protection. Additionally, the Aluma-Pro Plus guns feature quick connections between the control cable and electrical components (trigger, motor, potentiometer).

Specifications (Subject to change without notice.)

Model	Welding Current Rating	Wire Feed Speed	Wire Type and Diameter Capacity	Dimensions	Net Weight (Gun only)
XR-Aluma-Pro Plus (Air-cooled)	300 A at 100% duty cycle	70–900 ipm (1.8–23 m/min.) dependent on feeder used	.030–1/16 in. (0.8–1.6 mm) aluminum wire	H: 5 in. (127 mm) W: 2.5 in. (64 mm) D: 17 in. (432 mm)	2.5 lb. (1.1 kg)
XR-Aluma-Pro Plus (Water-cooled)	400 A at 100% duty cycle	70–900 ipm (1.8–23 m/min.)	Requires gun wire kit 230708 to run 1/16 in. (1.6 mm) wire		2.9 lb. (1.3 kg)
XR-Pistol Plus (Air-cooled)	200 A at 100% duty cycle 250 A at 60% duty cycle	70–900 ipm (1.8–23 m/min.)	.030–1/16 in. (0.8–1.6 mm) aluminum wire	H: 7.375 in. (187 mm) W: 1.875 in. (48 mm) D: 10.625 in. (270 mm)	2.2 lb. (1 kg)
XR-Pistol Plus (Water-cooled)	400 A at 100% duty cycle		Requires gun wire kit 230708 to run 1/16 in. (1.6 mm) wire		2.4 lb. (1.1 kg)

Certified by Canadian Standards Association to both the Canadian and U.S. Standards.

Conforms to European standards.

Note: XR Plus guns are only compatible with MPa Plus feeder, Intellix Elite feeder, Intellix Elite ROI/remote wire drive or Intellix Elite Swingarc boom-mounted feeder.

Drive Roll Kits and Guides

Select drive roll kits from chart below according to type and wire size being used. Drive roll kits include four drive rolls, necessary guides and feature an anti-wear sleeve for inlet guide.

Wire Size	V-groove for hard wire	U-groove for soft wire or soft-shelled cored wires	V-knurled for hard-shelled cored wires	U-cogged for extremely soft wire or soft-shelled cored wires (i.e., hard facing types)
.023/.025 in. (0.6 mm)	087132	—	—	—
.030 in. (0.8 mm)	046780	—	—	—
.035 in. (0.9 mm)	046781	044750	046792	—
.035 and .045 in. (0.9 and 1.2 mm)	227061*	244293**	—	—
.040 in. (1.0 mm)	191917	—	—	—
.045 in. (1.1/1.2 mm)	046782	046785	046793	083319
.052 in. (1.3/1.4 mm)	046783	046786	046794	—
1/16 in. (1.6 mm)	046784	046787	046795	046800
.068/.072 in. (1.8 mm)	—	—	—	—
5/64 in. (2.0 mm)	—	046788	046796	046801

*Included with Intellix feeder packages. Drive roll is dual-size reversible with one .035-inch and one .045-inch groove.

**Included with push-pull gun packages. Drive roll is dual-size reversible with one .035-inch and one .045-inch groove which also accommodates .047-inch (3/64-inch) wire.

Wire Guides

Wire Size	Inlet Guide	Intermediate Guide
.023–.040 in. (0.6–1.0 mm)	221030	056206
.045–.052 in. (1.2–1.3 mm)	221030	056207
1/16–5/64 in. (1.6–2.0 mm)	221030	056209
5/64–1/8 in. (2.0–3.2 mm)	229919	056211

Note: When ordering hard wire kits, retain factory-supplied inlet guide.

Nylon Guides for Feeding Aluminum

Wire Size	Inlet Guide and Intermediate Guide Kits
.035 in. (0.9 mm)	293928
.047 in. (1.2 mm)	293929
1/16 in. (1.6 mm)	293930

Note: U-groove drive rolls are recommended when feeding aluminum wire.

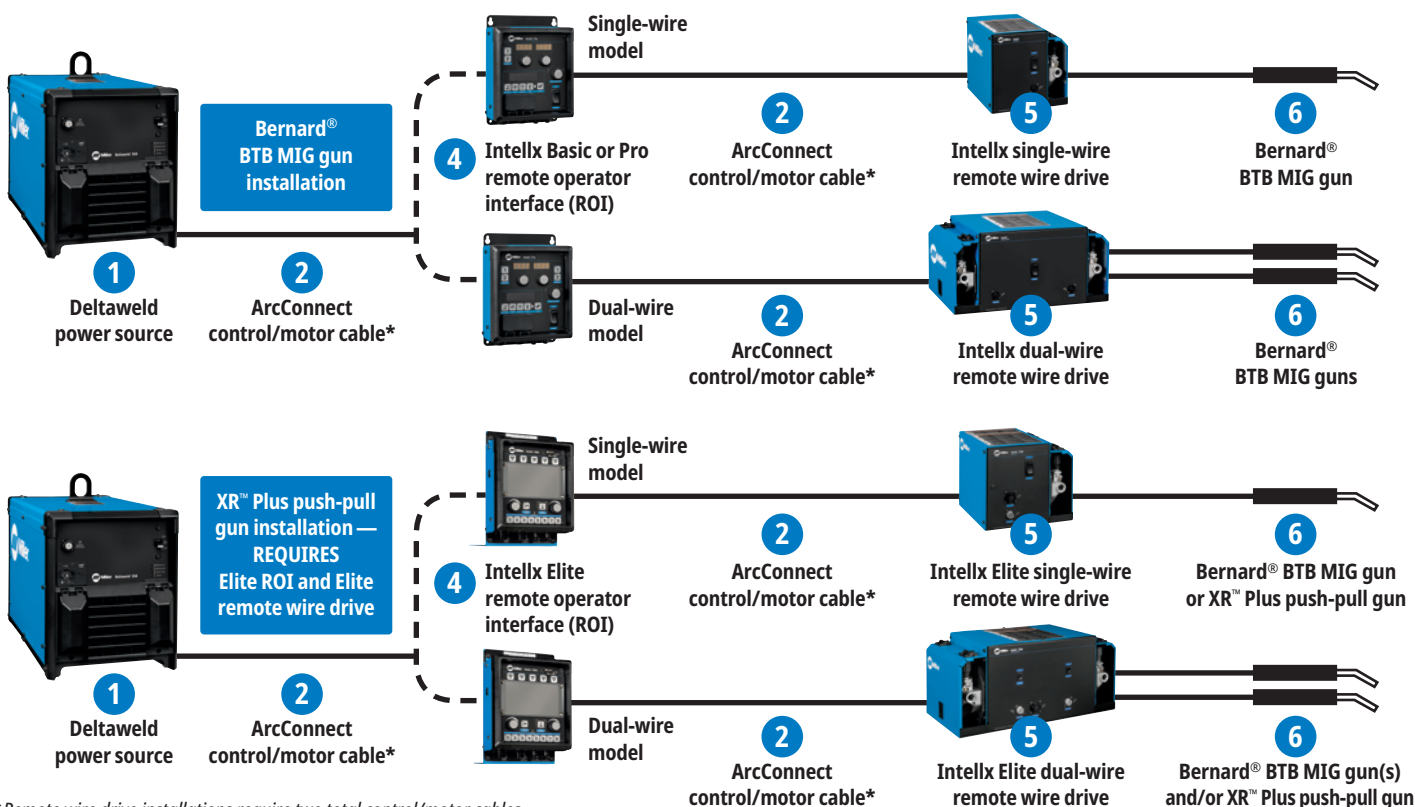
Typical Deltaweld® 350 System Installations

Standard installation



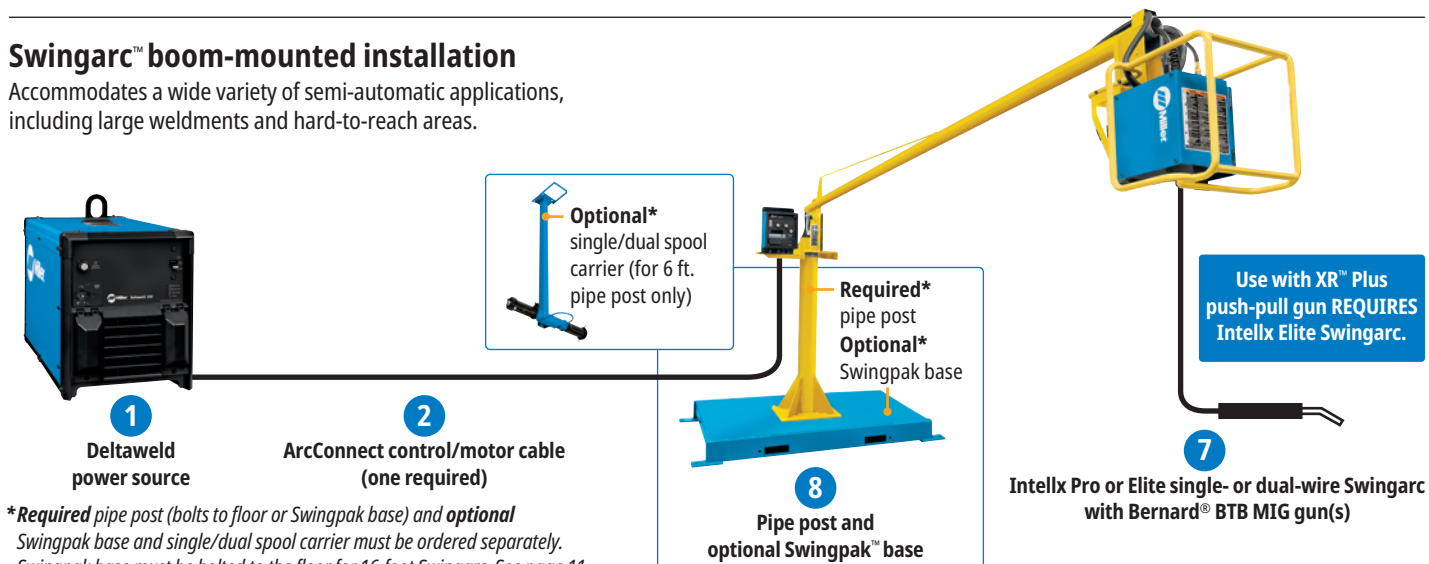
Remote wire drive installations

Ideal for fixed automation and boom applications where the wire drive motor is installed/controlled remotely.



Swingarc™ boom-mounted installation

Accommodates a wide variety of semi-automatic applications, including large weldments and hard-to-reach areas.



Ordering Information Most popular models◀

Configure a Custom Deltaweld System (See corresponding item numbers in Typical Deltaweld Systems Installations on page 10.) See page 12 for packages.

Power Source	Stock No.	Description	Qty.	Price
1 Deltaweld® 350 208/230/460 V	907747 ◀	With ArcConnect		
	907747001	With ArcConnect, meters and 14-pin receptacle		
	907747002*	With ArcConnect and Insight		
	907747003*	With ArcConnect, 14-pin receptacle and Insight		
Deltaweld® 350 575 V	907879	With ArcConnect		
	907879001	With ArcConnect and 14-pin receptacle		
	907879003*	With ArcConnect, 14-pin receptacle and Insight		
Cables and Leads				
2 ArcConnect Control/Motor Cables		See page 8 for available lengths		
Work Sense Leads (volt sense)		See page 8 for available lengths		
Feeder, ROI and Swingarc				
3 Intellx™ Basic Bench-Style Wire Feeders	951783001	Single-wire feeder with Bernard BTB Gun 400 A	With AccuLock™ consumables and .035/.045 in. V-groove drive rolls	
	951815001	Dual-wire feeder with two Bernard BTB Gun 400 A		
	951784001 ◀	Single-wire feeder with Bernard BTB Gun 400 A		
	951816001	Dual-wire feeder with two Bernard BTB Gun 400 A		
Intellx Pro Bench-Style Wire Feeders	951941001	Single-wire feeder with Bernard BTB Gun 400 A		
	951942001	Dual-wire feeder with two Bernard BTB Gun 400 A		
4 Intellx Basic Remote Operator Interface (ROI)	301548	Control box for single-wire drive assembly		
	301551	Control box for dual-wire drive assembly		
	301552	Control box for single-wire drive assembly		
	301553	Control box for dual-wire drive assembly		
Intellx Pro Remote Operator Interface (ROI)	301606	Control box for single-wire drive assembly. ONLY for use with Intellx Elite remote wire drive		
	301607	Control box for dual-wire drive assembly. ONLY for use with Intellx Elite remote wire drive		
5 Intellx Remote Wire Drives	301554	Single-wire drive assembly		
	301555	Dual-wire drive assembly		
	301722	Single-wire drive assembly. ONLY for use with Intellx Elite ROI		
	301723	Dual-wire drive assembly. ONLY for use with Intellx Elite ROI		
6 Bernard® BTB Gun 400 A	Q4015AE9EMC	400 A, 15 ft. (4.6 m) with AccuLock™ consumables		
XR™ Plus Push-Pull Guns		ONLY for use with Intellx Elite wire feeder, Elite ROI/remote wire drive or Elite Swingarc boom-mounted wire feeder. See page 9		
7 Intellx Pro Swingarc™ Boom-Mounted Wire Feeders	951804001	12 ft. single-wire model with Bernard BTB Gun 400 A	With AccuLock™ consumables and .035/.045 in. V-groove drive rolls	
	951806001	16 ft. single-wire model with Bernard BTB Gun 400 A		
	951932001	12 ft. dual-wire model with two Bernard BTB Gun 400 A		
	951000091	12 ft. single-wire model with Bernard BTB Gun 400 A		
Intellx Elite Swingarc™ Boom-Mounted Wire Feeders	951000093	16 ft. single-wire model with Bernard BTB Gun 400 A		
	951000092	12 ft. dual-wire model with two Bernard BTB Gun 400 A		
8 Pipe Post	149838	4 ft. pipe post. Required for mounting Swingarc booms		
	149839	6 ft. pipe post. Required for mounting Swingarc booms		
	183997	Optional mounting platform for pipe post		
	300352	Optional spool carrier for 6 ft. pipe post		
Accessories				
Industrial Cart	301758	For Deltaweld 350/500		
Cart Accessory Kit		For single- or dual-wire bench feeders. See page 8		
Stationary Handle Kit	301529			
Feeder Accessories		See page 8		
Coolant Systems				
Industrial Water Cooler	301759	See page 8		
Coolant	043809	See page 8		

Date:

Total Quoted Price:

*Includes Insight Core™ and Insight Centerpoint™ Basic mode. Insight Centerpoint Basic mode requires Centerpoint license(s).
Optional Insight Centerpoint Premium (301490) can be added for use with Intellx Elite feeder/ROI.

Ordering Information Most popular models◀

Deltaweld® 350 Packages	Stock No.	Description	Qty.	Price
Deltaweld 350 MIGRunner™ with Single-Wire Intellx™ Basic	951000138	Includes Deltaweld 350 power source (907747), single- or dual-wire Intellx Basic feeder with Bernard® BTB Gun 400 A (two with dual-wire feeder) and AccuLock™ consumables. See page 7 for complete package description		
Deltaweld 350 MIGRunner with Dual-Wire Intellx Basic	951000139			
Deltaweld 350 MIGRunner with Single-Wire Intellx Pro	951000140 ◀	Includes Deltaweld 350 power source (907747, or 907747002 on Insight package), single- or dual-wire Intellx Pro feeder with Bernard® BTB Gun 400 A (two with dual-wire feeder) and AccuLock™ consumables. See page 7 for complete package description		
Deltaweld 350 MIGRunner with Insight and Single-Wire Intellx Pro	951000141*			
Deltaweld 350 MIGRunner with Dual-Wire Intellx Pro	951000197			
Deltaweld 350 MIGRunner with Single-Wire Intellx Elite	951000142	Includes Deltaweld 350 power source (907747, or 907747002 on Insight package), single- or dual-wire Intellx Elite feeder with Bernard® BTB Gun 400 A (two with dual-wire feeder) and AccuLock™ consumables. See page 7 for complete package description		
Deltaweld 350 MIGRunner with Insight and Single-Wire Intellx Elite	951000143**			
Deltaweld 350 MIGRunner with Dual-Wire Intellx Elite	951000144			
Deltaweld 350 with Insight, Running Gear, and Cart Accessory Kit	907896**	Same as above, but without wire feeder and MIG gun (see options on page 11). If ordering a dual-wire feeder, also order accessory kit (301579)		
Deltaweld 350 MIGRunner with Single-Wire Intellx Elite and Push-Pull Gun	951000145	Includes Deltaweld 350 power source (907747), single- or dual-wire Intellx Elite feeder with XR-Aluma-Pro™ Plus push-pull gun (and Bernard® BTB Gun 400 A with AccuLock™ consumables on dual-wire feeder). See page 7 for complete package description		
Deltaweld 350 MIGRunner with Dual-Wire Intellx Elite and Push-Pull Gun	951000146			

Date :

Total Quoted Price:

*Includes Insight Core™ and Insight Centerpoint™ Basic mode. Insight Centerpoint Basic mode requires Centerpoint license(s).

**Includes Insight Core™ and Insight Centerpoint™ Basic mode. Insight Centerpoint Basic mode requires Centerpoint license(s).
Optional Insight Centerpoint Premium (301490) can be added for use with Intellx Elite feeder/ROI.

Distributed by:

