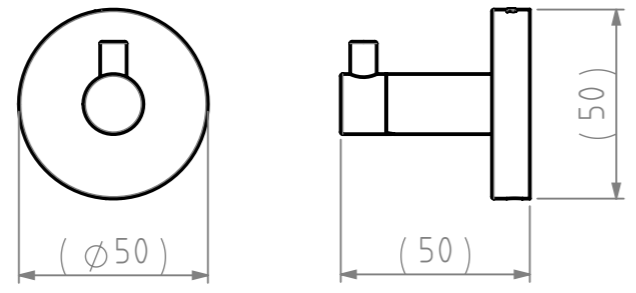
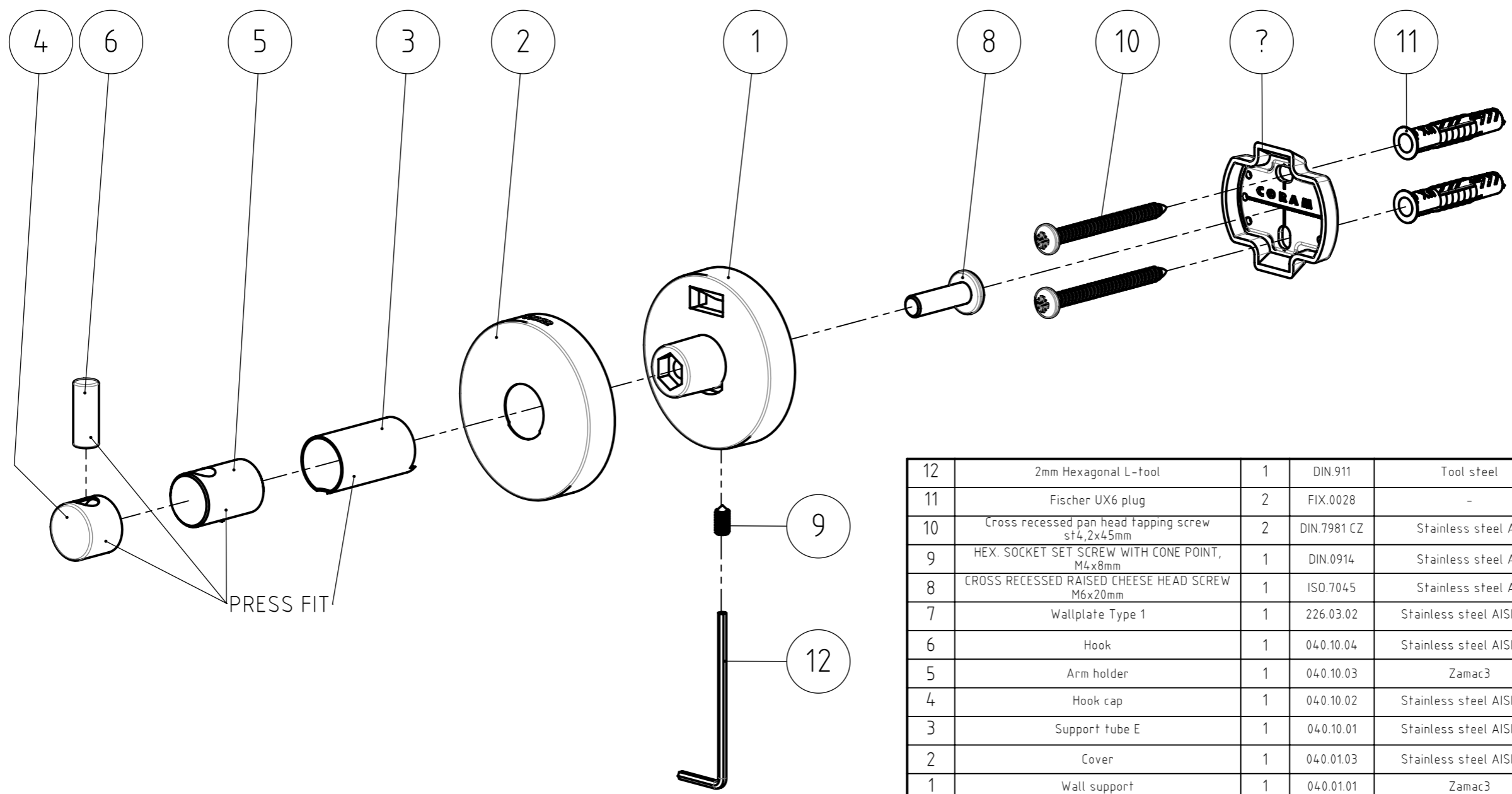


# FINAL DRAWING

REVISIONS				
REV.	DESCRIPTION	DATE	BY	APPROVED
-	See 040.10.00.TC	-	-	-



12	2mm Hexagonal L-tool	1	DIN.911	Tool steel	-
11	Fischer UX6 plug	2	FIX.0028	-	-
10	Cross recessed pan head tapping screw st4,2x45mm	2	DIN.7981 CZ	Stainless steel A2	-
9	HEX. SOCKET SET SCREW WITH CONE POINT, M4x8mm	1	DIN.0914	Stainless steel A2	-
8	CROSS RECESSED RAISED CHEESE HEAD SCREW M6x20mm	1	ISO.7045	Stainless steel A2	-
7	Wallplate Type 1	1	226.03.02	Stainless steel AISI 304	Sand blasted
6	Hook	1	040.10.04	Stainless steel AISI 304	Brushed
5	Arm holder	1	040.10.03	Zamac3	Chromium Plated
4	Hook cap	1	040.10.02	Stainless steel AISI 304	Brushed
3	Support tube E	1	040.10.01	Stainless steel AISI 304	Brushed
2	Cover	1	040.01.03	Stainless steel AISI 304	Brushed
1	Wall support	1	040.01.01	Zamac3	Chromium Plated
NR.	DESCRIPTION	QTY.	DRAW.NR.	MATERIAL	TREATMENT

GENERAL DIMENSION UNLESS OTHERWISE STATED ACCORDING TO DIN 7168							DESCRIPTION:	
CLASS	NOMINAL MEASUREMENTS (mm)						Hook large	
	0.5 UNTIL 3	3 UNTIL 6	6 UNTIL 30	30 UNTIL 120	120 UNTIL 400	400 UNTIL 1000		
M (MIDDLE)	±0.1	±0.1	±0.2	±0.3	±0.5	±0.8	±1.2	±2
PROJECTION:	GENERAL ANGLE:		EAN:		VERSION NAME:			ARTICLE NR.:
	±0,5°		4008913096406		stainless steel			3096.3.09.46
DRAWN BY:	MS		GENERAL ROUGHNESS:		PROJECT:			<b>TIGER</b> Tiger Products b.v. Winde 3, PO box 11 5660 AA Geldrop The Netherlands
CHECKED BY:			0,8/		040-Boston			
DATE:	24-8-2006		UNITS:		DRAWING NR.:			
STATUS:	Production		mm		040.10.00.TS			
PRINT DATE:	3-10-2024		SCALE:					
INT.REV.NR.:	02		FORMAT:					
			SHEET:					
			2/3					

The reproduction, distribution and utilization of this document as well as the communication of its contents to others without express authorization is prohibited. Offenders will be held liable for the payment of damages. All rights reserved in the event of the grant of a patent, utility model or design. Copyright reserved.