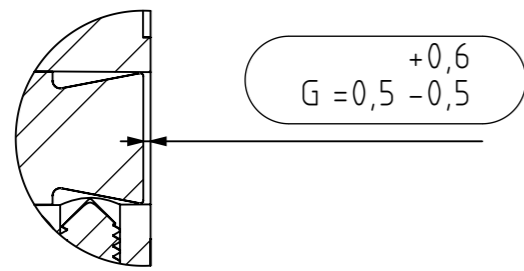
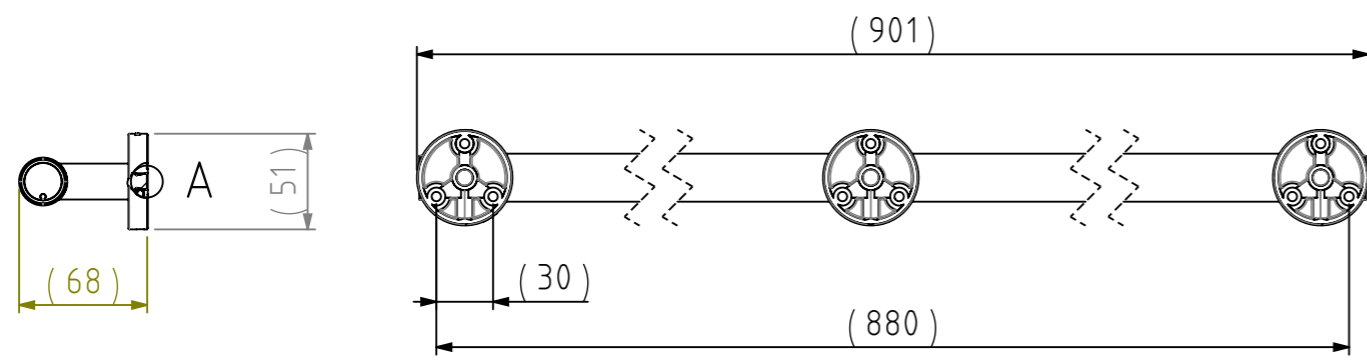
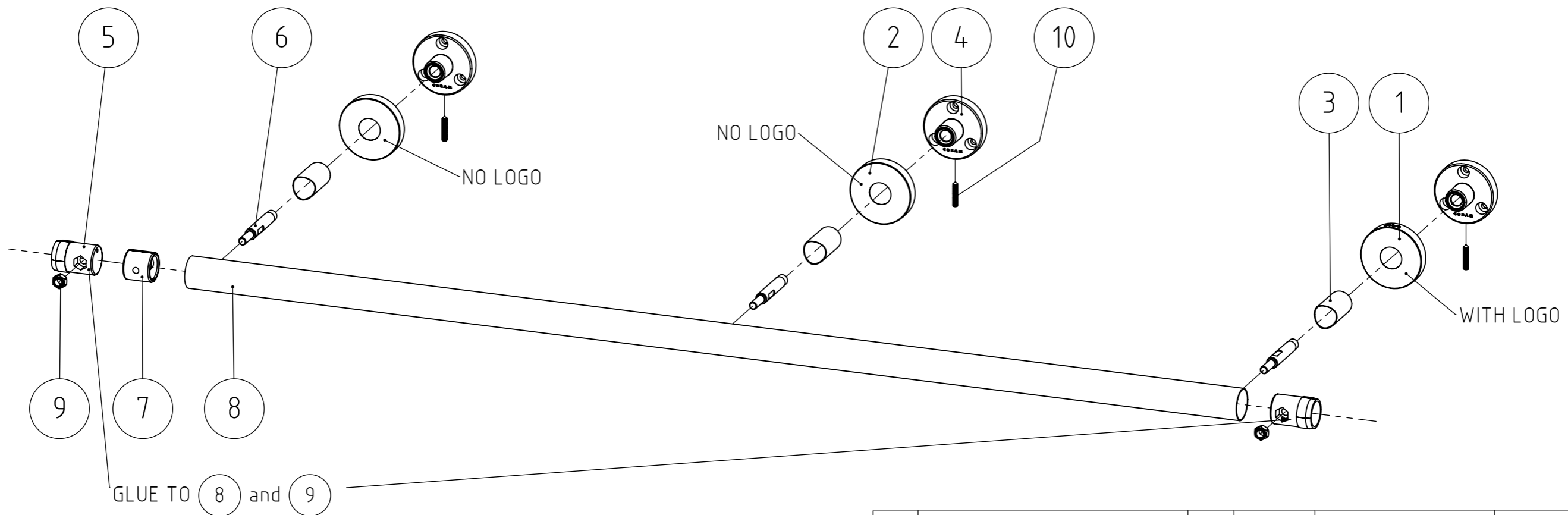


FINAL DRAWING

REVISIONS				
REV.	DESCRIPTION	DATE	BY	APPROVED
-	See TC	-	-	-



NR.	DESCRIPTION	QTY.	DRAW.NR.	MATERIAL	TREATMENT
10	HEX. SOCKET SET SCREW WITH CONE POINT, M4x20mm	3	DIN.0914	Stainless steel A2	-
9	SELF PREVAILING NUT, M6	2	DIN.0985	Stainless steel A2	-
8	Grip	1	124.13.02	Stainless steel AISI 430	Chromium plated
7	Center tube connector	1	124.13.01	Zamac3	Chromium Plated
6	Assembly screw - standard	3	124.08.03	Stainless steel 303 (CNC)	-
5	Tube connector	2	124.08.02	Zamac3	Chromium Plated
4	Wall bracket 3pt	3	124.08.01	Zamac5	Chromium Plated
3	Cover tube	3	124.02.05	Stainless steel AISI 430	Chromium plated
2	Cover, no logo	2	124.02.04	Stainless steel AISI 430	Chromium plated
1	Cover, logo	1	124.02.04	Stainless steel AISI 430	Chromium plated

GENERAL DIMENSION UNLESS OTHERWISE STATED ACCORDING TO DIN 7168		DESCRIPTION:	
CLASS		Safety grip handle 90	
NOMINAL MEASUREMENTS (mm)		VERSION NAME:	
0.5 UNTIL 3	3 UNTIL 6	6 UNTIL 30	30 UNTIL 120
±0.1	±0.1	±0.2	±0.3
120 UNTIL 400	400 UNTIL 1000	1000 UNTIL 2000	2000 UNTIL 4000
±0.5	±0.8	±1.2	±2
M (MIDDLE)		EAN:	
±0.1		8712163192073	
PROJECTION:		GENERAL ANGLE:	
±0.5°		PROJECT:	
DRAWN BY: F.H.		124-Boston Comfort & Safety	
CHECKED BY: RS		DRAWING NR:	
DATE: 8-8-2006		124.13.00.TCP	
STATUS: Production		TIGER	
PRINT DATE: 8-4-2026		Tiger Nederland b.v.	
INT.REV.NR.: 0200		Winde 3, PO box 11	
SHEET: 4/4		5660 AA Geldrop	
		The Netherlands	

The reproduction, distribution and utilization of this document as well as the communication of its contents to others without express authorization is prohibited. Offenders will be held liable for the payment of damages. All rights reserved in the event of the grant of a patent, utility model or design. Copyright reserved.