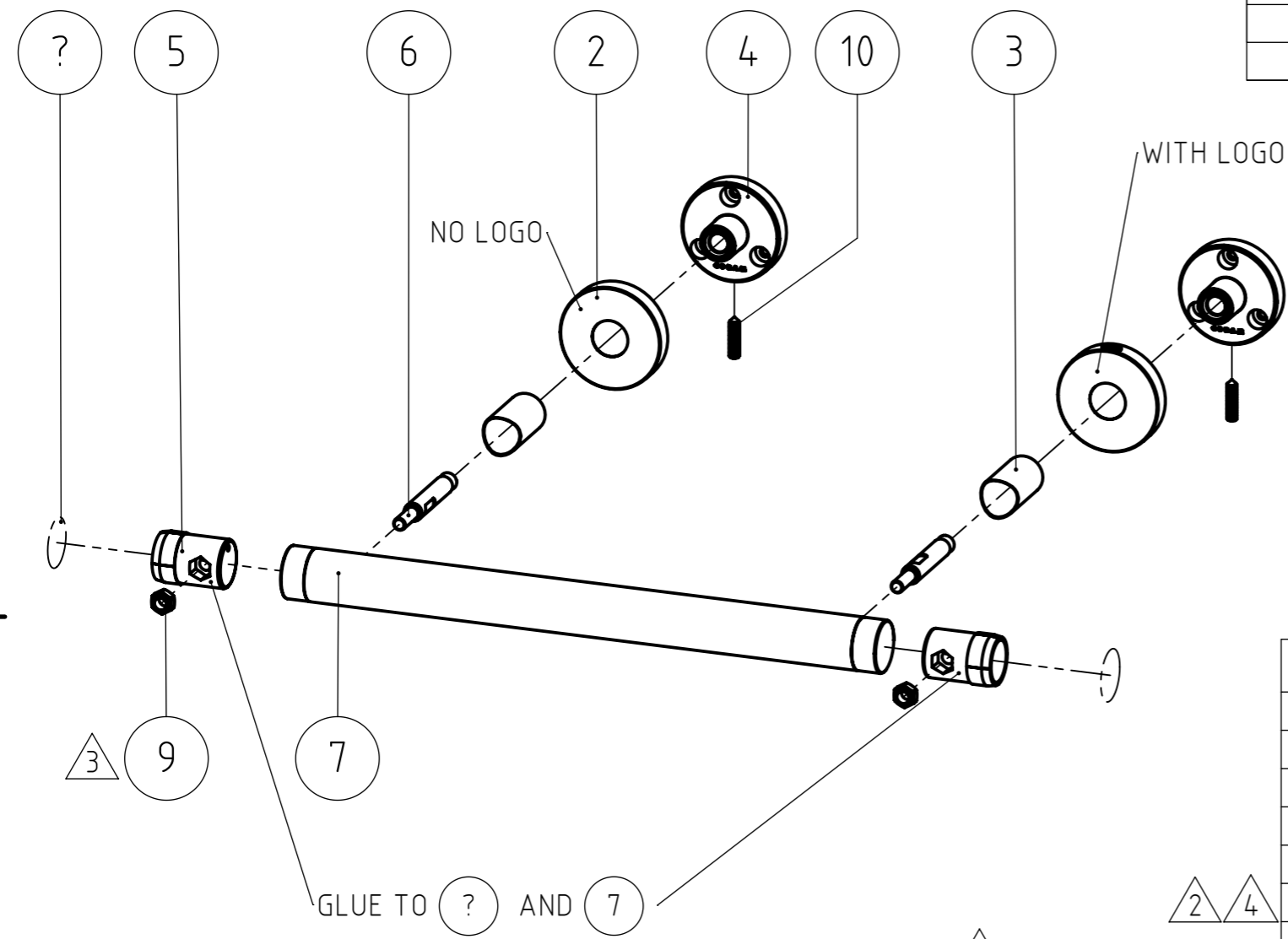
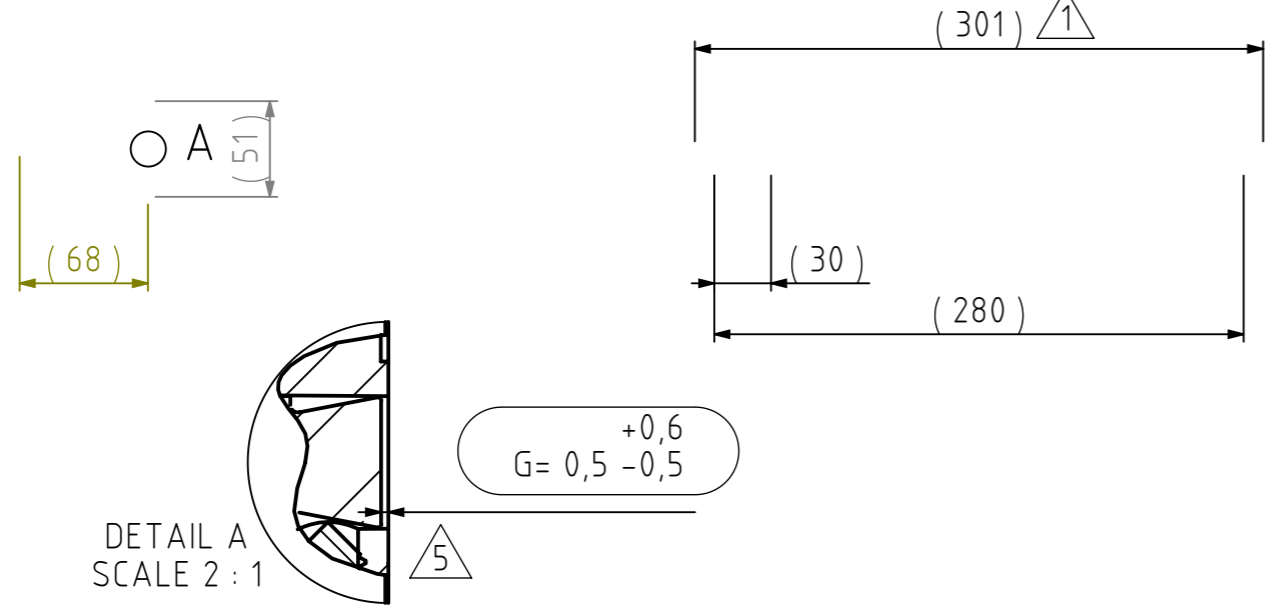


# FINAL DRAWING

| REVISIONS |   |            |    |          |
|-----------|---|------------|----|----------|
| REV.      | DESCRIPTION   | DATE       | BY | APPROVED |
| 1         | LENGHT DECREASED 10mm, SELF PREVAILING NUTS ADDED                                     | 20-10-2010 | FH | RS       |
| 2         | WALL BRACKET 3PT ZAMAC 3 CHANGED TO ZAMAC 5   | 15-12-2011 | FH | RS       |
| 3         | M5 nut and assembly screw modified to M6, inspection dimensions added (mono drawings) | 14-11-2016 | FH | MS       |
| 4         | Geesa version added (chrome plated .TCP)  | 18-11-2016 | FH | MS       |
| 5         | Added play of 0,15mm within assembly. Nominal G= 0,5mm                                | 23-11-2016 | FH | MS       |
| 6         | Black version added (black, TB)   | 10-10-2022 | MS | -        |



| NR. | DESCRIPTION                                    | QTY. | DRAW.NR.  | MATERIAL                  | TREATMENT             |
|-----|--|------|-----------|---------------------------|-----------------------|
| 10  | HEX. SOCKET SET SCREW WITH CONE POINT, M5x20mm | 2    | DIN.0914  | Stainless steel A2        | -                     |
| 9   | SELF PREVAILING NUT, M6                        | 2    | DIN.0985  | Stainless steel A2        | -                     |
| 8   | Grip end cap                                   | 2    | 040.15.03 | Stainless steel AISI 304  | Polished - High gloss |
| 7   | Grip   | 1    | 124.08.04 | Stainless steel AISI 304  | Polished - High gloss |
| 6   | Assembly screw                                 | 2    | 124.08.03 | Stainless steel 303 (CNC) | -                     |
| 5   | Tube connector                                 | 2    | 124.08.02 | Zamac3                    | Chromium Plated       |
| 4   | Wall bracket 3pt                               | 2    | 124.08.01 | Zamac5                    | Chromium Plated       |
| 3   | Cover tube                                     | 2    | 124.02.05 | Stainless steel AISI 304  | Polished - High gloss |
| 2   | Cover, no logo                                 | 1    | 124.02.04 | Stainless steel AISI 304  | Polished - High gloss |
| 1   | Cover, logo                                    | 1    | 124.02.04 | Stainless steel AISI 304  | Polished - High gloss |



| GENERAL DIMENSION UNLESS OTHERWISE STATED ACCORDING TO DIN 7168 |                           |           |                    |              |               |                | DESCRIPTION: |  |
|---|---------------------------|-----------|--------------------|--------------|---------------|----------------|--------------|--|
| CLASS   | NOMINAL MEASUREMENTS (mm) |           |                    |              |               |                | Grab rail    |  |
|   | 0.5 UNTIL 3               | 3 UNTIL 6 | 6 UNTIL 30         | 30 UNTIL 120 | 120 UNTIL 400 | 400 UNTIL 1000 |              |  |
| M (MIDDLE)  | ±0.1                      | ±0.1      | ±0.2               | ±0.3         | ±0.5          | ±0.8           | ±1.2         | ±2   |
| PROJECTION:   | GENERAL ANGLE:            |           | EAN:               |              | VERSION NAME: |                |              | ARTICLE NR.:   |
|   | ±0,5°                     |           | 4008912977003      |              | chrome        |                |              | 2977.2.03.46   |
| DRAWN BY:   | F.H.                      |           | GENERAL ROUGHNESS: |              | PROJECT:      |                |              | <b>TIGER</b><br>Tiger Nederland b.v.<br>Winde 3, PO box 11<br>5660 AA Geldrop<br>The Netherlands |
| CHECKED BY:   |                           |           | 0,8/✓              |              | 124-Boston    |                |              |  |
| DATE:   | 8-8-2006                  |           | UNITS:             |              | DRAWING NR.:  |                |              |  |
| STATUS:   | Production                |           | mm                 |              | 124.08.00.TC  |                |              |  |
| PRINT DATE:   | 8-4-2026                  |           | SCALE:             |              |               |                |              |  |
| INT.REV.NR.:  | 0601                      |           | FORMAT:            |              |               |                |              |  |
|   |                           |           | SHEET:             |              |               |                |              |  |
|   |                           |           | 1/4                |              |               |                |              |  |

The reproduction, distribution and utilization of this document as well as the communication of its contents to others without express authorization is prohibited. Offenders will be held liable for the payment of damages. All rights reserved in the event of the grant of a patent, utility model or design. Copyright reserved.