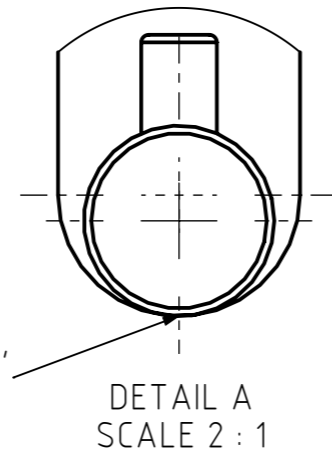


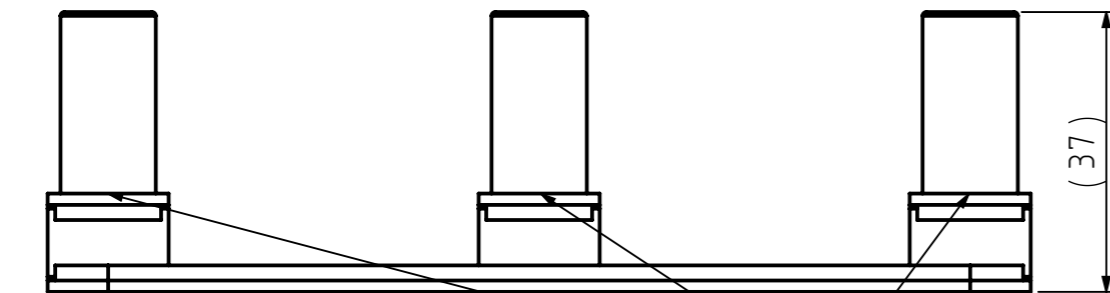
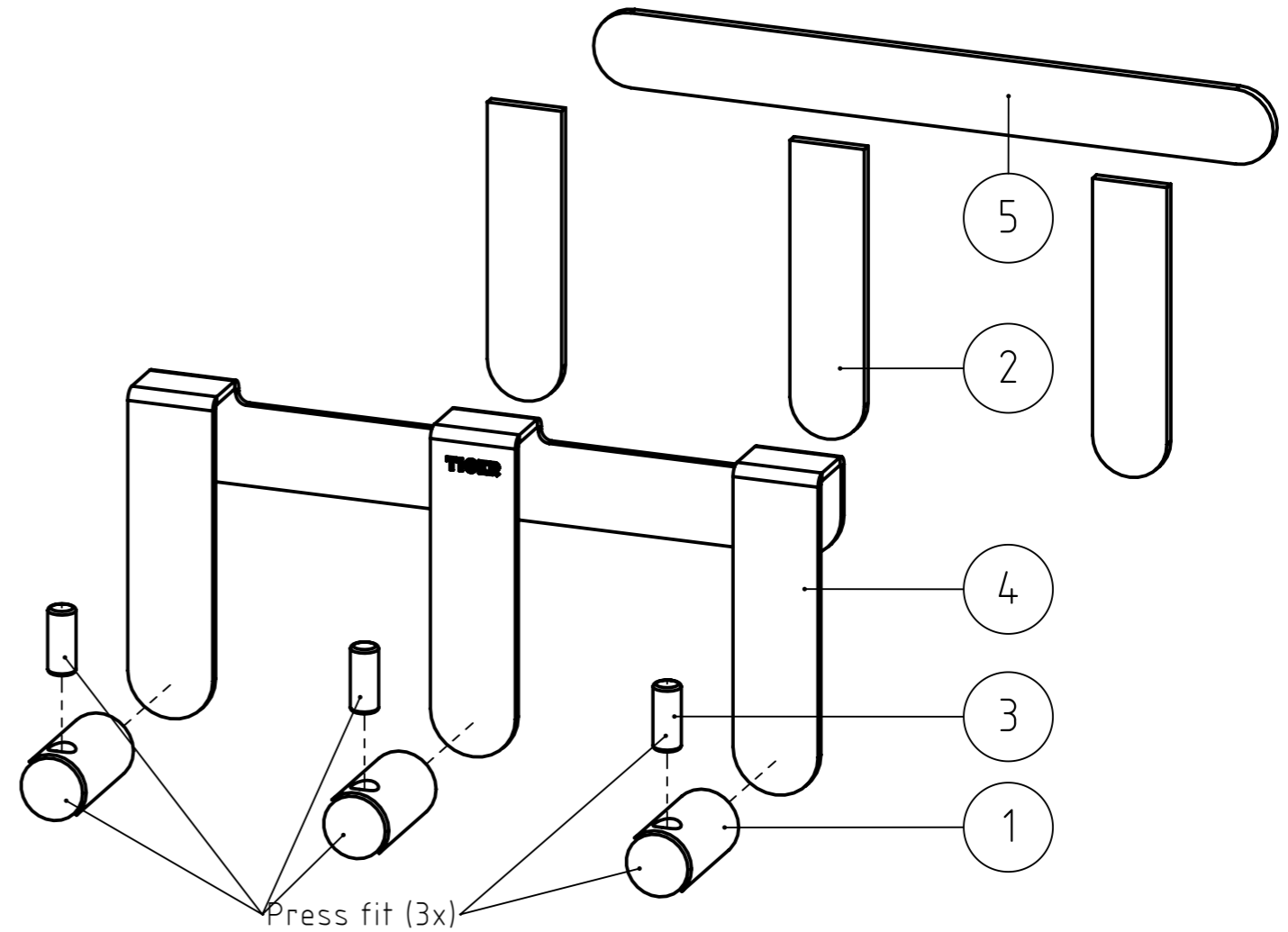
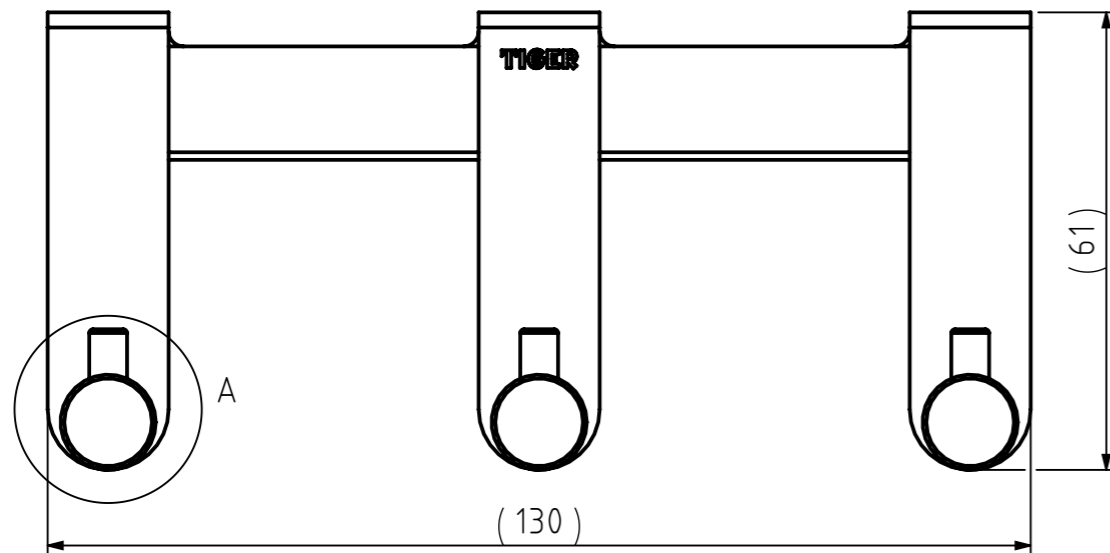
FINAL DRAWING

REVISIONS

REV.	DESCRIPTION	DATE	BY	APPROVED
1	Connection method changed from weld to rivet. Protection pads are attached to glass hook, Protection pad big is included separately.	8-8-2017	MS	WW



Glass hook (nr.4) and Pin holder (nr.1) are aligned at the bottom, not centered on each other.



Connect by riveting (3x)

NR.	DESCRIPTION	QTY.	DRAW.NR.	MATERIAL	TREATMENT
5	Protection pad big	1	225.16.02	Silicone rubber, PMS 432C, 60 Shore A	One side adhesive
4	Glass hook	1	225.16.01	Stainless steel 304	Brushed
3	Pin	3	225.08.04	Stainless steel 304	Brushed
2	Protection pad	3	225.08.03	Silicone rubber, PMS 432C, 60 Shore A	One side adhesive
1	Pin holder	3	225.08.02	Stainless steel 304	Brushed

GENERAL DIMENSION UNLESS OTHERWISE STATED ACCORDING TO DIN 7168							DESCRIPTION:	
CLASS	NOMINAL MEASUREMENTS (mm)						Shower hook rack Rhino	
	0.5 UNTIL 3	3 UNTIL 6	6 UNTIL 30	30 UNTIL 120	120 UNTIL 400	400 UNTIL 1000		
M (MIDDLE)	±0.1	±0.1	±0.2	±0.3	±0.5	±0.8	±1.2	±2
PROJECTION:	GENERAL ANGLE:			EAN:		VERSION NAME:		ARTICLE NR.:
	±0,5°			400891118032		stainless steel		11182.3.09.42
DRAWN BY:	MS		GENERAL ROUGHNESS:		0,8		PROJECT:	
CHECKED BY:	FVP		UNITS:		mm		225-hooks 2016	
DATE:	20-9-2016		SCALE:		1:1		DRAWING NR.:	
STATUS:	Production		FORMAT:		A3		225.16.00.TS	
PRINT DATE:	8-4-2026		SHEET:		1/1		 Tiger Products b.v. Winde 3, PO box 11 5660 AA Geldrop The Netherlands	
INT.REV.NR.:	01							



- Remarks:
- Glass hook (nr.4) and Pin holder (nr.1) are aligned at the bottom, not centered on each other.
 - Protection pad big (nr.5) is not attached to the other parts. (Included seperately)
 - Make the back of the riveting as flat as possible.