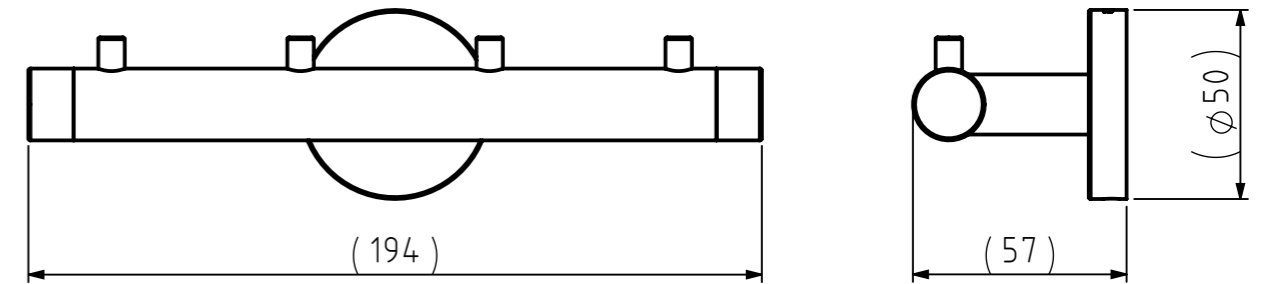
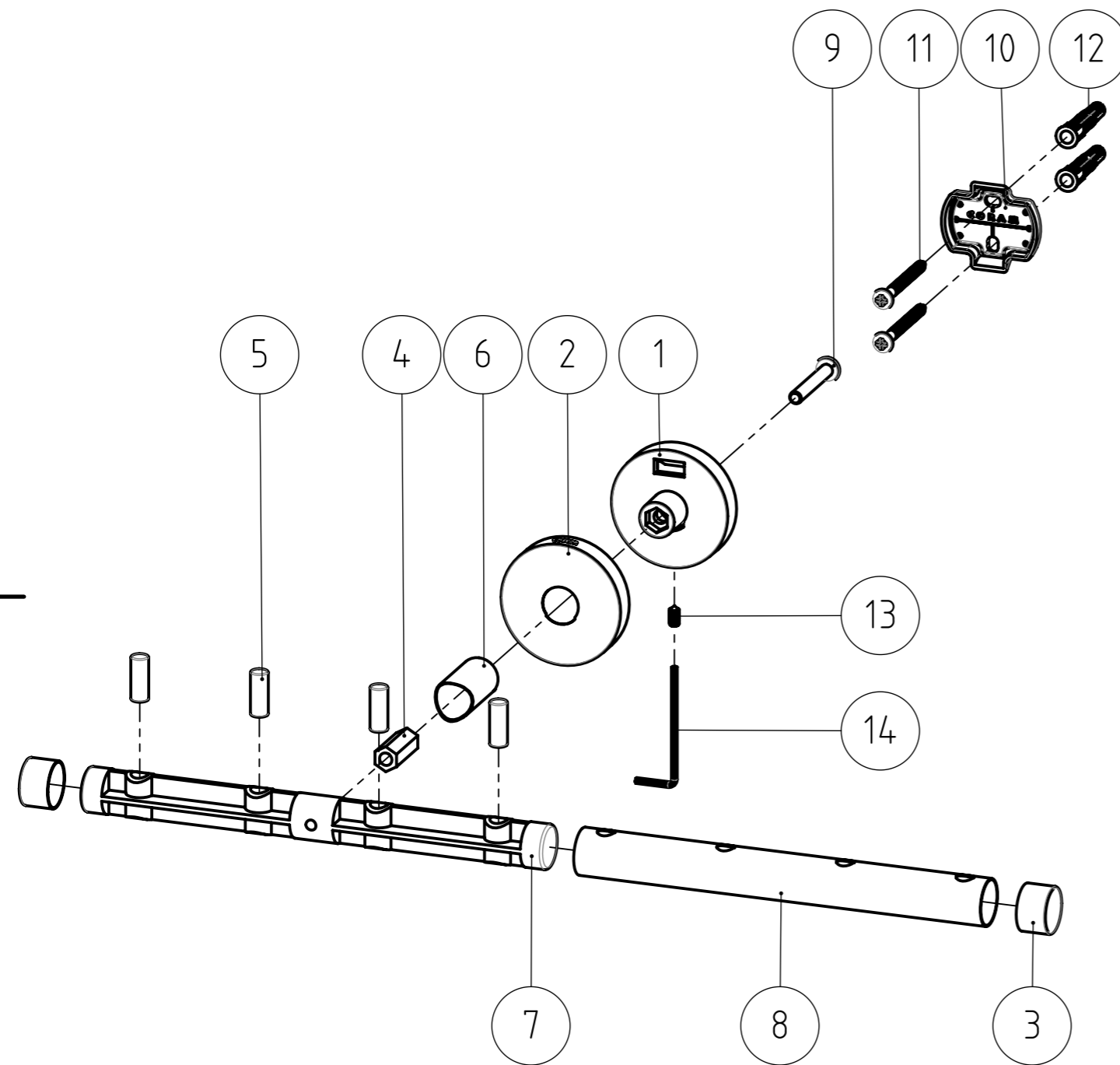


# FINAL DRAWING



### Remarks:

- Fix the "Wall support", "Multihook core" and "Anti-rotation piece" together with glue. Be careful not to spill glue on the thread part.

| NR. | DESCRIPTION                                      | QTY. | DRAW.NR.    | MATERIAL                 | TREATMENT       |
|-----|--|------|-------------|--------------------------|-----------------|
| 14  | 2mm Hexagonal L-tool                             | 1    | DIN.911     | Tool steel               | -               |
| 13  | HEX. SOCKET SET SCREW WITH CONE POINT, M4x8mm    | 1    | DIN.0914    | Stainless steel A2       | -               |
| 12  | Fischer UX6 plug                                 | 2    | FIX.0028    | -                        | -               |
| 11  | Cross recessed pan head tapping screw st4,2x45mm | 2    | DIN.7981 CZ | Stainless steel A2       | -               |
| 10  | Wallplate Type 1                                 | 1    | 226.03.02   | Stainless steel AISI 304 | Sand blasted    |
| 9   | CROSS RECESSED RAISED CHEESE HEAD SCREW M5x35mm  | 1    | ISO.7045    | Stainless steel A2       | -               |
| 8   | Multihook tube                                   | 1    | 040.18.03   | Stainless steel AISI 304 | Brushed         |
| 7   | Multihook core                                   | 1    | 040.18.02   | Zamac3                   | Chromium Plated |
| 6   | Support tube K                                   | 1    | 040.18.01   | Stainless steel AISI 304 | Brushed         |
| 5   | Hook   | 4    | 040.10.04   | Stainless steel AISI 304 | Brushed         |
| 4   | Anti-rotation piece                              | 1    | 040.06.10   | Zamac3                   | Chromium Plated |
| 3   | End cap  | 2    | 040.03.07   | Stainless steel AISI 304 | Brushed         |
| 2   | Cover  | 1    | 040.01.03   | Stainless steel AISI 304 | Brushed         |
| 1   | Wall support                                     | 1    | 040.01.01   | Zamac3                   | Chromium Plated |

| GENERAL DIMENSION UNLESS OTHERWISE STATED ACCORDING TO DIN 7168   |                           | DESCRIPTION:   |                           |              |               |                |                 |                 |  |             |           |            |              |               |                |                 |                 |            |      |      |      |      |      |      |      |    |                  |  |
|---|---------------------------|--|---------------------------|--------------|---------------|----------------|-----------------|-----------------|--|-------------|-----------|------------|--------------|---------------|----------------|-----------------|-----------------|------------|------|------|------|------|------|------|------|----|------------------|--|
| <table border="1"> <thead> <tr> <th rowspan="2">CLASS</th> <th colspan="7">NOMINAL MEASUREMENTS (mm)</th> </tr> <tr> <th>0.5 UNTIL 3</th> <th>3 UNTIL 6</th> <th>6 UNTIL 30</th> <th>30 UNTIL 120</th> <th>120 UNTIL 400</th> <th>400 UNTIL 1000</th> <th>1000 UNTIL 2000</th> <th>2000 UNTIL 4000</th> </tr> </thead> <tbody> <tr> <td>M (MIDDLE)</td> <td>±0.1</td> <td>±0.1</td> <td>±0.2</td> <td>±0.3</td> <td>±0.5</td> <td>±0.8</td> <td>±1.2</td> <td>±2</td> </tr> </tbody> </table> |                           | CLASS  | NOMINAL MEASUREMENTS (mm) |              |               |                |                 |                 |  | 0.5 UNTIL 3 | 3 UNTIL 6 | 6 UNTIL 30 | 30 UNTIL 120 | 120 UNTIL 400 | 400 UNTIL 1000 | 1000 UNTIL 2000 | 2000 UNTIL 4000 | M (MIDDLE) | ±0.1 | ±0.1 | ±0.2 | ±0.3 | ±0.5 | ±0.8 | ±1.2 | ±2 | <p>Multihook</p> |  |
| CLASS   | NOMINAL MEASUREMENTS (mm) |  |                           |              |               |                |                 |                 |  |             |           |            |              |               |                |                 |                 |            |      |      |      |      |      |      |      |    |                  |  |
|   | 0.5 UNTIL 3               | 3 UNTIL 6  | 6 UNTIL 30                | 30 UNTIL 120 | 120 UNTIL 400 | 400 UNTIL 1000 | 1000 UNTIL 2000 | 2000 UNTIL 4000 |  |             |           |            |              |               |                |                 |                 |            |      |      |      |      |      |      |      |    |                  |  |
| M (MIDDLE)  | ±0.1                      | ±0.1   | ±0.2                      | ±0.3         | ±0.5          | ±0.8           | ±1.2            | ±2              |  |             |           |            |              |               |                |                 |                 |            |      |      |      |      |      |      |      |    |                  |  |
| PROJECTION:   |                           | VERSION NAME: stainless steel  |                           |              |               |                |                 |                 |  |             |           |            |              |               |                |                 |                 |            |      |      |      |      |      |      |      |    |                  |  |
| GENERAL ANGLE: ±0,5°  |                           | EAN: 4008913098400   |                           |              |               |                |                 |                 |  |             |           |            |              |               |                |                 |                 |            |      |      |      |      |      |      |      |    |                  |  |
| DRAWN BY: EV  |                           | ARTICLE NR.: 3098.3.09.46  |                           |              |               |                |                 |                 |  |             |           |            |              |               |                |                 |                 |            |      |      |      |      |      |      |      |    |                  |  |
| CHECKED BY: -   |                           | PROJECT: 040-Boston  |                           |              |               |                |                 |                 |  |             |           |            |              |               |                |                 |                 |            |      |      |      |      |      |      |      |    |                  |  |
| DATE: 1-9-2006  |                           | DRAWING NR.: 040.18.00.TS  |                           |              |               |                |                 |                 |  |             |           |            |              |               |                |                 |                 |            |      |      |      |      |      |      |      |    |                  |  |
| STATUS: Production  |                           | TIGER  |                           |              |               |                |                 |                 |  |             |           |            |              |               |                |                 |                 |            |      |      |      |      |      |      |      |    |                  |  |
| PRINT DATE: 3-10-2024   |                           | Tiger Nederland b.v.<br>Winde 3, PO box 11<br>5660 AA Geldrop<br>The Netherlands |                           |              |               |                |                 |                 |  |             |           |            |              |               |                |                 |                 |            |      |      |      |      |      |      |      |    |                  |  |
| INT.REV.NR.: 01   |                           | SHEET: 2/2   |                           |              |               |                |                 |                 |  |             |           |            |              |               |                |                 |                 |            |      |      |      |      |      |      |      |    |                  |  |

The reproduction, distribution and utilization of this document as well as the communication of its contents to others without express authorization is prohibited. Offenders will be held liable for the payment of damages. All rights reserved in the event of a patent, utility model or design. Copyright reserved.