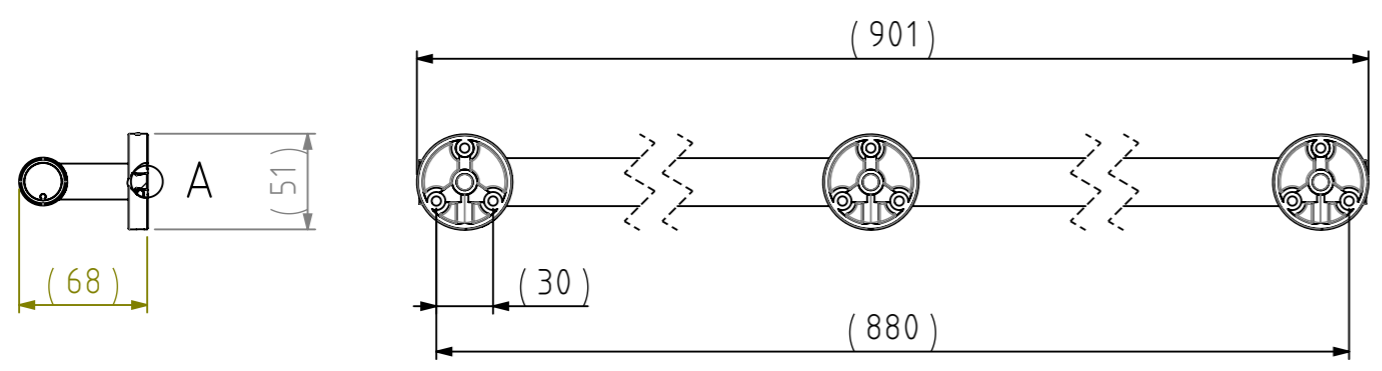
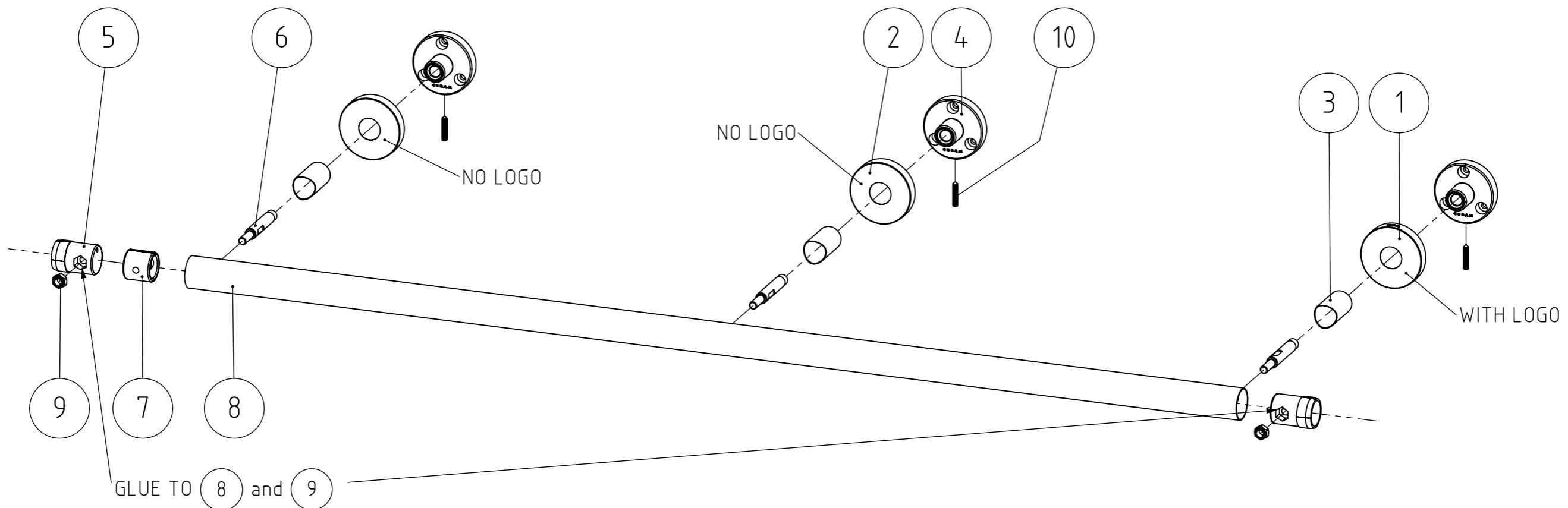
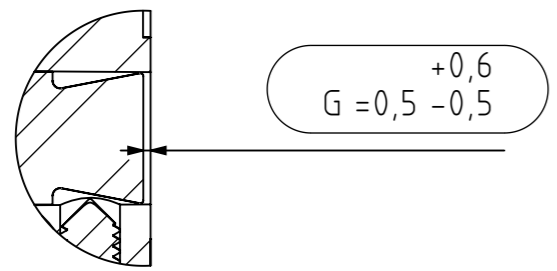


# FINAL DRAWING

REVISIONS				
REV.	DESCRIPTION	DATE	BY	APPROVED
-	See TC	-	-	-



NR.	DESCRIPTION	QTY.	DRAW.NR.	MATERIAL	TREATMENT
10	HEX. SOCKET SET SCREW WITH CONE POINT, M4x20mm	3	DIN.0914	Stainless steel A2	-
9	SELF PREVAILING NUT, M6	2	DIN.0985	Stainless steel A2	-
8	Grip	1	124.13.02	Stainless steel AISI 304	Brushed
7	Center tube connector	1	124.13.01	Zamac3	Chromium Plated
6	Assembly screw - standard	3	124.08.03	Stainless steel 303 (CNC)	-
5	Tube connector	2	124.08.02	Zamac3	Chromium Plated
4	Wall bracket 3pt	3	124.08.01	Zamac5	Chromium Plated
3	Cover tube	3	124.02.05	Stainless steel AISI 304	Brushed
2	Cover, no logo	2	124.02.04	Stainless steel AISI 304	Brushed
1	Cover, logo	1	124.02.04	Stainless steel AISI 304	Brushed



DETAIL A  
SCALE 2 : 1

GENERAL DIMENSION UNLESS OTHERWISE STATED ACCORDING TO DIN 7168		DESCRIPTION:	
CLASS	NOMINAL MEASUREMENTS (mm)	Safety grip handle 90	
	0.5 UNTIL 3 3 UNTIL 6 6 UNTIL 30 30 UNTIL 120 120 UNTIL 400 400 UNTIL 1000 1000 UNTIL 2000 2000 UNTIL 4000		
M (MIDDLE)	±0.1 ±0.1 ±0.2 ±0.3 ±0.5 ±0.8 ±1.2 ±2		
PROJECTION:	GENERAL ANGLE: ±0,5°	EAN: 4008912981017	VERSION NAME: stainless steel
DRAWN BY: F.H.	GENERAL ROUGHNESS: 0,8 ✓	PROJECT: 124-Boston Comfort & Safety	ARTICLE NR.: 2981.2.09.46
CHECKED BY: RS	UNITS: mm	DRAWING NR.: 124.13.00.TS	<b>TIGER</b> Tiger Nederland b.v. Winde 3, PO box 11 5660 AA Geldrop The Netherlands
DATE: 8-8-2006	SCALE: 1:3		
STATUS: Production	FORMAT: A3		
PRINT DATE: 8-4-2026	SHEET: 2/4		
INT.REV.NR.: 0200			

The reproduction, distribution and utilization of this document as well as the communication of its contents to others without express authorization is prohibited. Offenders will be held liable for the payment of damages. All rights reserved in the event of the grant of a patent, utility model or design. Copyright reserved.