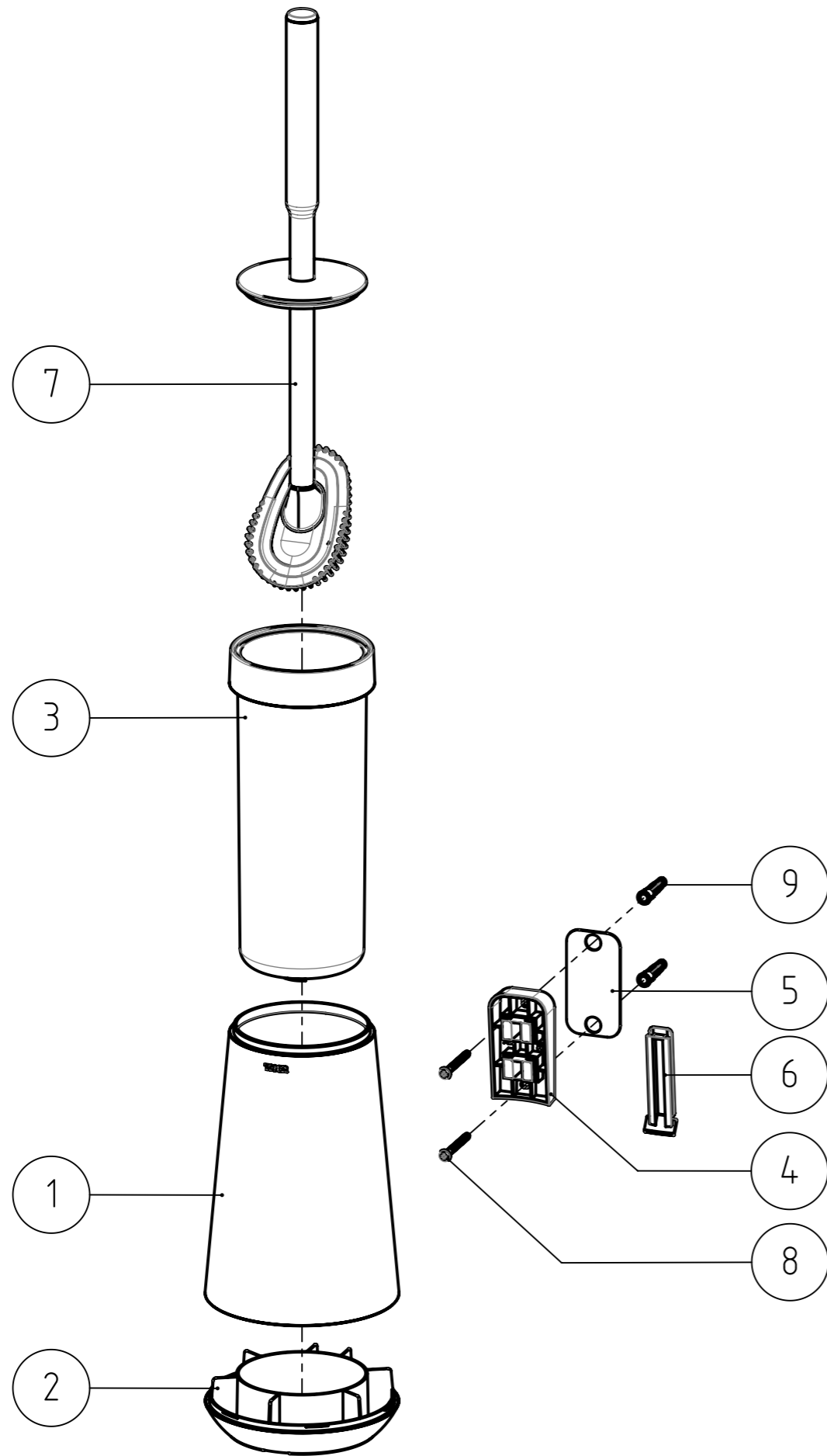


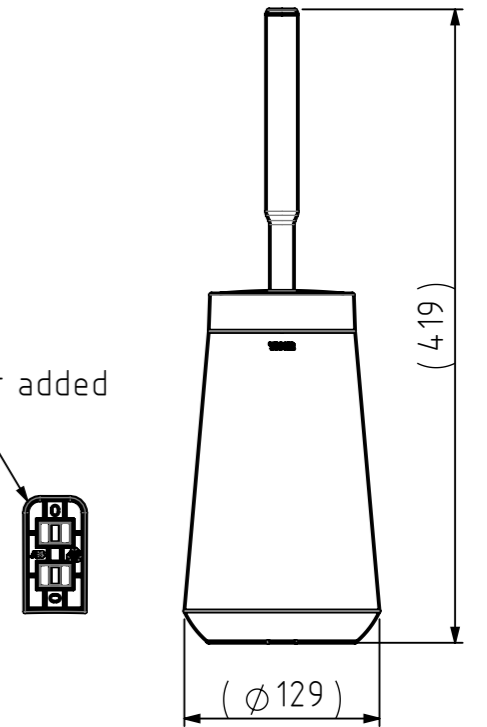
FINAL DRAWING



REVISIONS

REV.	DESCRIPTION	DATE	BY	APPROVED
-	See 264.04.00.TB	-	-	-

Wall bracket added separately



Remarks:

- Screws and plugs added to fixation set.
- Tape pad attached to wall bracket.
- Wall bracket added separately.

NR.	DESCRIPTION	QTY.	DRAW.NR.	MATERIAL	TREATMENT
9	Fischer UX6 plug	2	FIX.0028	-	-
8	Cross recessed pan head tapping screw st4,2x4,5mm	2	DIN.7981 CZ	Stainless steel A2	-
7	Flexible Toilet Brush Spare	1	256.03.00	See sub-assembly Light grey version	See sub-assembly Light grey version
6	Cover	1	264.04.06	PP - Pantone Cool grey 6U, matt	Texture VDI 3400 ref.27 (light)
5	Tape pad	1	264.04.05	3M VHB tape 4945 white 1,1 mm	-
4	Wall bracket	1	264.04.04	ABS - UV stabilized - White RAL 9003, matt	Texture VDI 3400 ref.27 (light)
3	Inner pot	1	264.04.03	PP - White RAL 9003, matt	Texture VDI 3400 ref.27 (light)
2	Bottom part	1	264.04.02	PP - White RAL 9003, matt	Texture VDI 3400 ref.27 (light)
1	Top part	1	264.04.01	PP - White RAL 9003, matt	Texture VDI 3400 ref.27 (light)

GENERAL DIMENSION UNLESS OTHERWISE STATED ACCORDING TO DIN 7168							DESCRIPTION:	
CLASS	NOMINAL MEASUREMENTS (mm)						Toilet brush and holder	
	0.5 UNTIL 3	3 UNTIL 6	6 UNTIL 30	30 UNTIL 120	120 UNTIL 400	400 UNTIL 1000		
M (MIDDLE)	±0.1	±0.1	±0.2	±0.3	±0.5	±0.8	±1.2	±2
PROJECTION:	GENERAL ANGLE:		EAN:		VERSION NAME:		ARTICLE NR.:	
	±0,5°		4 008911329438		white		1329420146	
DRAWN BY:	MS		GENERAL ROUGHNESS:		PROJECT:		TIGER Tiger Nederland b.v. Winde 3, PO box 11 5660 AA Geldrop The Netherlands	
CHECKED BY:			0,8/✓		264-Tess			
DATE:	30-4-2019		UNITS:		DRAWING NR.:			
STATUS:	Production		mm		264.04.00.TW			
PRINT DATE:	8-4-2026		SCALE:					
INT.REV.NR.:	05		FORMAT:					
			A3					
			SHEET:					
			2/3					