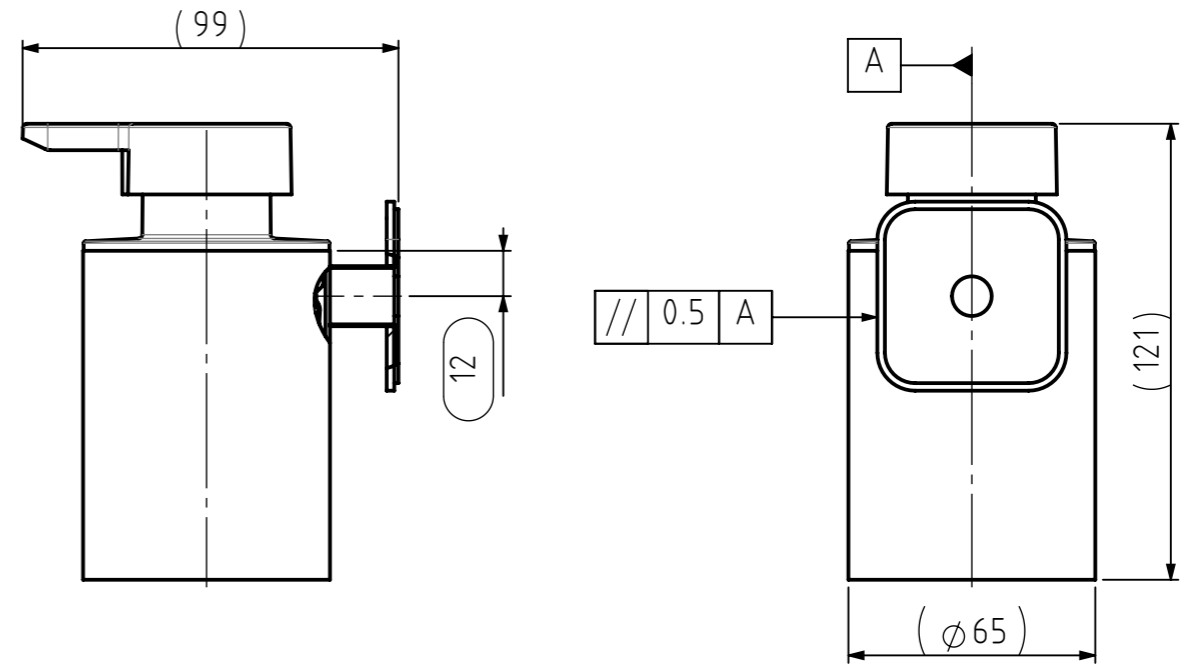
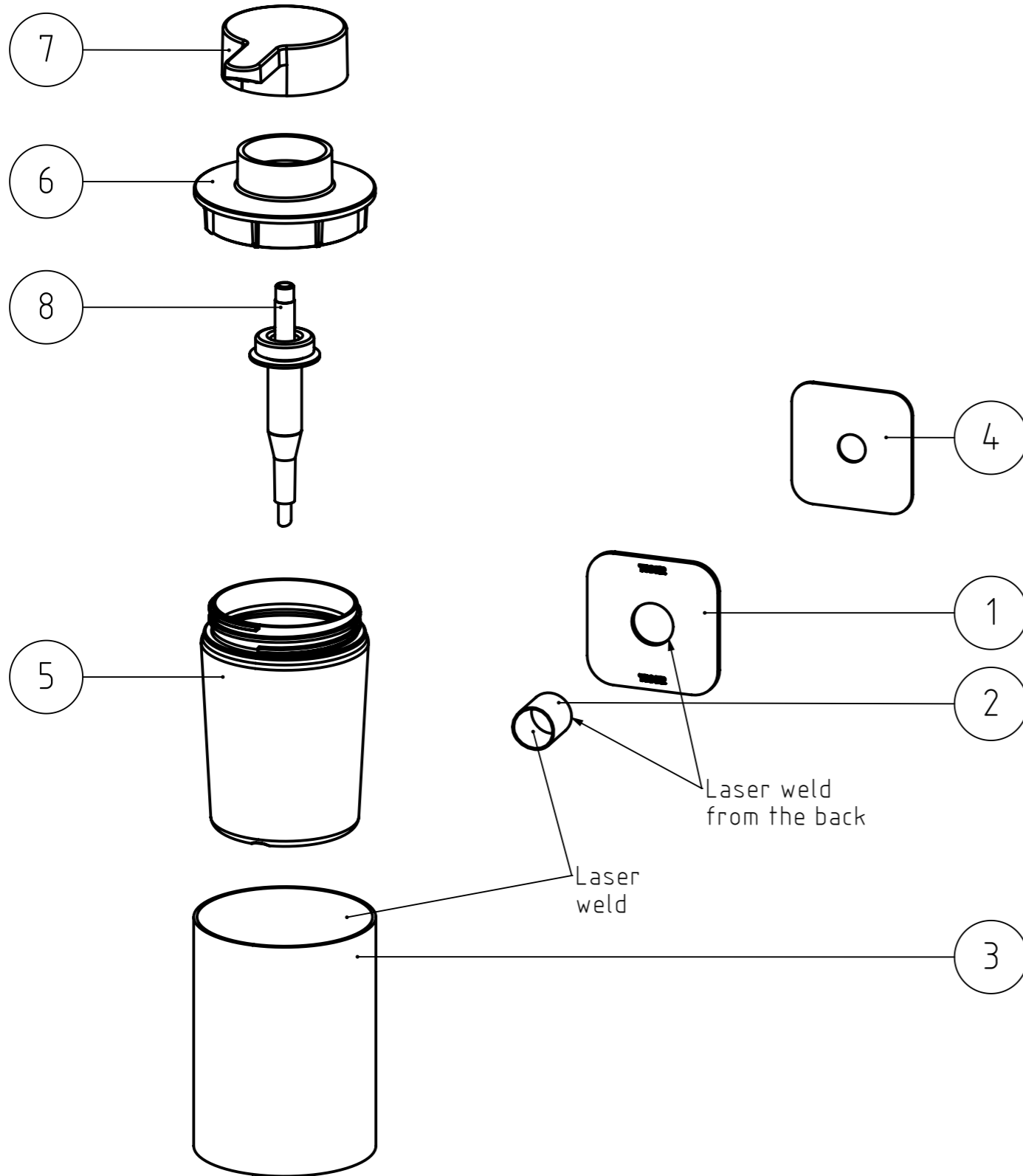


FINAL DRAWING

REVISIONS

REV.	DESCRIPTION	DATE	BY	APPROVED
-	See 205.15.00.TS	-	-	-



NR.	DESCRIPTION	QTY.	DRAW.NR.	MATERIAL	TREATMENT
8	Pump unit	1	BUY.06.00	Various	Various
7	Dispenser head	1	223.02.05	ABS - Black RAL 9005, semi gloss	Texture VDI 3400 ref.30 (standard)
6	Dispenser screw base	1	223.02.04	ABS - Black RAL 9005, semi gloss	Texture VDI 3400 ref.30 (standard)
5	Dispenser beaker	1	223.02.03	PET	Technical Smooth
4	Tape pad big	1	205.04.08	3M Tape VHB GPH110 1.10mm	-
3	Dispenser holder (no logo)	1	205.15.01	Stainless steel 304	Polished - High gloss
2	Tube	1	205.01.05	Stainless steel 304	Polished - High gloss
1	Wall plate 2	1	205.09.04	Stainless steel 304	Polished - High gloss

GENERAL DIMENSION UNLESS OTHERWISE STATED ACCORDING TO DIN 7168		DESCRIPTION:	
CLASS		NOMINAL MEASUREMENTS (mm)	
	0.5 UNTIL 3	3 UNTIL 6	6 UNTIL 30
	3 UNTIL 120	120 UNTIL 400	400 UNTIL 1000
	1000 UNTIL 2000	2000 UNTIL 4000	
M (MIDDLE)	±0.1	±0.1	±0.2
		±0.3	±0.5
			±0.8
			±1.2
			±2
PROJECTION:	GENERAL ANGLE:	VERSION NAME:	ARTICLE NR. (packed product):
	±0,5°	chrome	1313430346
			(for packaging information see GDS)
DRAWN BY:	MS	GENERAL ROUGHNESS:	PROJECT:
CHECKED BY:		0,8	205-Colar
DATE:	15-1-2016	UNITS:	DRAWING NR.:
STATUS:	Production	mm	205.15.00.TC
PRINT DATE:	14-4-2026	SCALE:	
INT.REV.NR.:	03	1:2	
		FORMAT:	
		A3	
		SHEET:	
		2/3	



The reproduction, distribution and utilization of this document as well as the communication of its contents to others without express authorization is prohibited. Offenders will be held liable for the payment of damages. All rights reserved in the event of the grant of a patent, utility model or design. Copyright reserved.