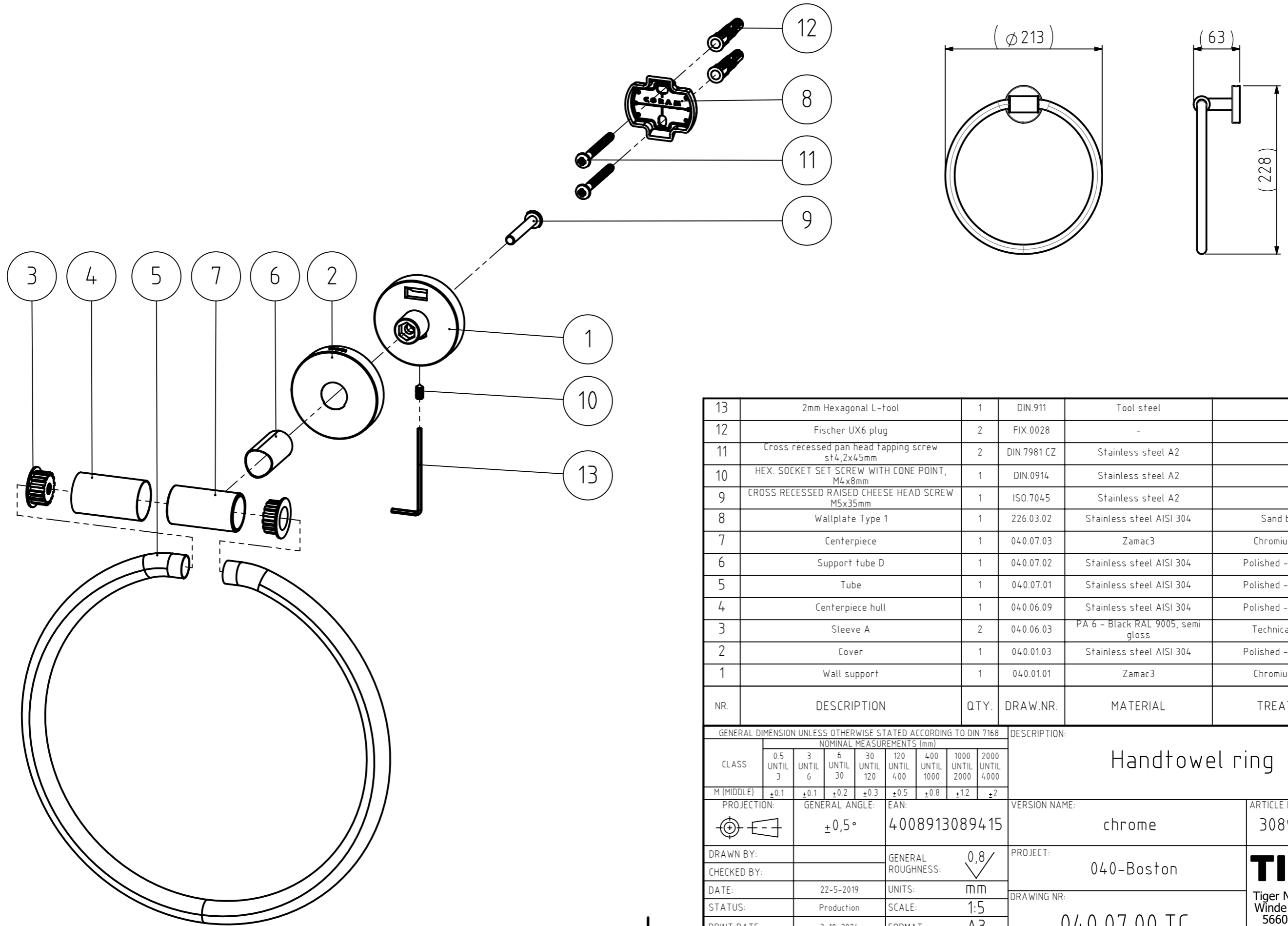


# FINAL DRAWING



NR.	DESCRIPTION	QTY.	DRAW.NR.	MATERIAL	TREATMENT
13	2mm Hexagonal L-tool	1	DIN.911	Tool steel	-
12	Fischer UX6 plug	2	FIX.0028	-	-
11	Cross recessed pan head tapping screw st4,2x45mm	2	DIN.7981 CZ	Stainless steel A2	-
10	HEX. SOCKET SET SCREW WITH CONE POINT, M4x8mm	1	DIN.0914	Stainless steel A2	-
9	CROSS RECESSED RAISED CHEESE HEAD SCREW M5x35mm	1	ISO.7045	Stainless steel A2	-
8	Wallplate Type 1	1	226.03.02	Stainless steel AISI 304	Sand blasted
7	Centerpiece	1	040.07.03	Zamac3	Chromium Plated
6	Support tube D	1	040.07.02	Stainless steel AISI 304	Polished - High gloss
5	Tube	1	040.07.01	Stainless steel AISI 304	Polished - High gloss
4	Centerpiece hull	1	040.06.09	Stainless steel AISI 304	Polished - High gloss
3	Sleeve A	2	040.06.03	PA 6 - Black RAL 9005, semi gloss	Technical Smooth
2	Cover	1	040.01.03	Stainless steel AISI 304	Polished - High gloss
1	Wall support	1	040.01.01	Zamac3	Chromium Plated

GENERAL DIMENSION UNLESS OTHERWISE STATED ACCORDING TO DIN 7168							DESCRIPTION:	
CLASS	NOMINAL MEASUREMENTS (mm)						Handtowel ring	
	0.5 UNTIL 3	3 UNTIL 6	6 UNTIL 30	30 UNTIL 120	120 UNTIL 400	400 UNTIL 1000		
M (MIDDLE)	±0.1	±0.1	±0.2	±0.3	±0.5	±0.8	±1.2	±2
PROJECTION:	GENERAL ANGLE:		EAN:		VERSION NAME:		ARTICLE NR.:	
	±0,5°		4008913089415		chrome		3089.3.03.46	
DRAWN BY:	CHECKED BY:		GENERAL ROUGHNESS:		PROJECT:		<b>TIGER</b> Tiger Nederland b.v. Winde 3, PO box 11 5660 AA Geldrop The Netherlands	
DATE:	22-5-2019		0,8/		040-Boston			
STATUS:	Production		UNITS: mm		DRAWING NR.:			
PRINT DATE:	3-10-2024		SCALE: 1:5		040.07.00.TC			
INT.REV.NR.:	01		FORMAT: A3		SHEET: 1/2			

The reproduction, distribution and utilization of this document as well as the communication of its contents to others without express authorization is prohibited. Offenders will be held liable for the payment of damages. All rights reserved in the event of the grant of a patent, utility model or design. Copyright reserved.