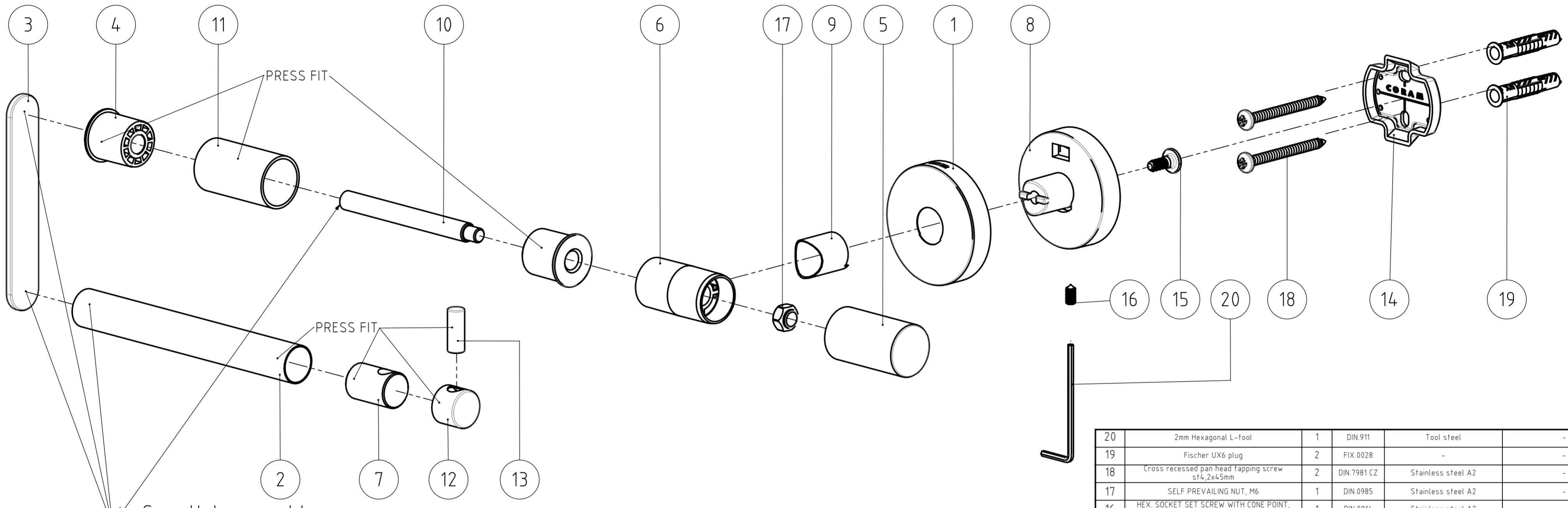
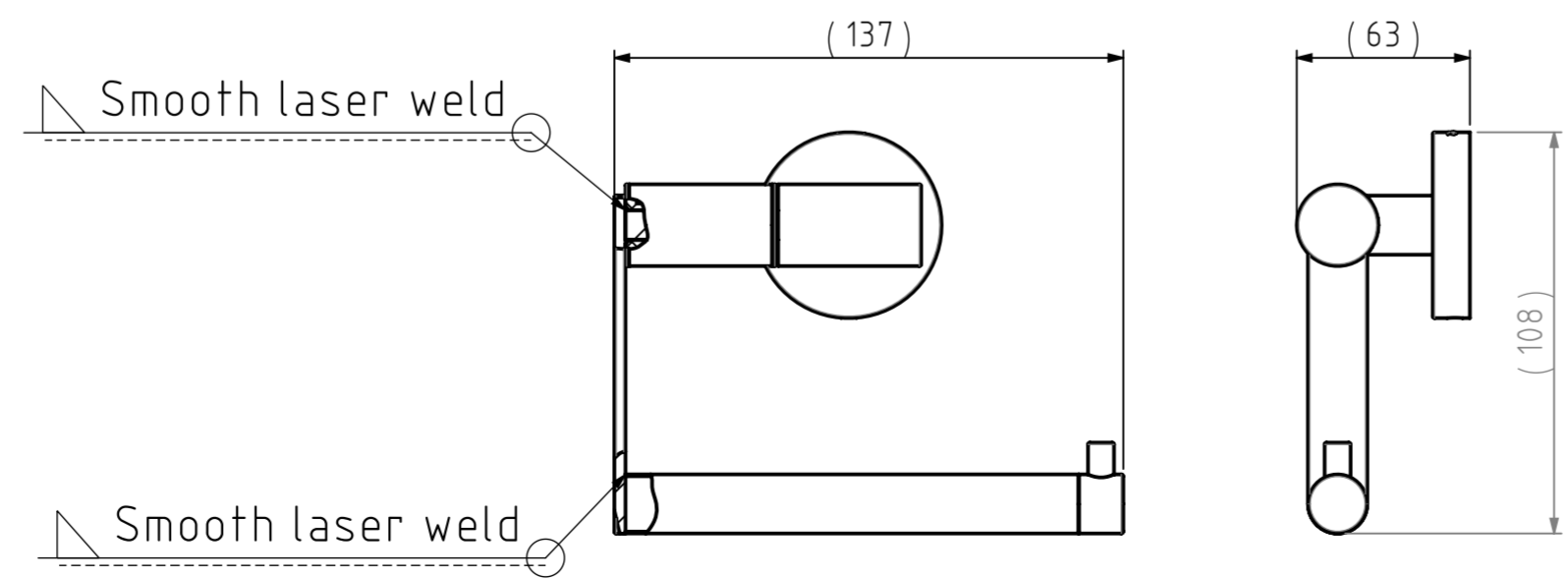


# FINAL DRAWING

REVISIONS				
REV.	DESCRIPTION	DATE	BY	APPROVED
-	See 040.09.00.TC	-	-	-



The reproduction, distribution and utilization of this document as well as the communication of its contents to others without express authorization is prohibited. Offenders will be held liable for the payment of damages. All rights reserved in the event of the grant of a patent, utility model or design. Copyright reserved.



NR.	DESCRIPTION	QTY.	DRAW.NR.	MATERIAL	TREATMENT
20	2mm Hexagonal L-tool	1	DIN 911	Tool steel	-
19	Fischer UX6 plug	2	FIX.0028	-	-
18	Cross recessed pan head tapping screw st4,2x45mm	2	DIN.7981 CZ	Stainless steel A2	-
17	SELF PREVAILING NUT, M6	1	DIN.0985	Stainless steel A2	-
16	HEX. SOCKET SET SCREW WITH CONE POINT, M4x8mm	1	DIN.0914	Stainless steel A2	-
15	HEXAL. THREAD FORMING R. CHEESE HEAD SCREW FOR PLASTIC, ST5x12mm	1	FIX.0008	STEEL	ZINC PLATED
14	Wallplate Type 1	1	226.03.02	Stainless steel AISI 304	Sand blasted
13	Hook	1	040.10.04	Stainless steel AISI 304	Brushed
12	Hook cap	1	040.10.02	Stainless steel AISI 304	Brushed
11	Bush	1	040.09.01	Stainless steel AISI 304	Brushed
10	Insert hinge part	1	040.08.14	Stainless steel AISI 304	-
9	Support tube D	1	040.08.13	Stainless steel AISI 304	Brushed
8	Wall support	1	040.08.12	Zamac3	Chromium Plated
7	ARM HOLDER	1	040.08.09	ZAMAC	CHROMIUM PLATED
6	CENTERPIECE B	1	040.08.08	POM GF20	ANTRACITE PANTONE 432C
5	Centerpiece cover	1	040.08.07	Stainless steel AISI 304	Brushed
4	Sleeve B	2	040.08.06	PA 6 - Black RAL 9005, semi gloss	Technical Smooth
3	Arm	1	040.08.02	Stainless steel AISI 304	Brushed
2	Hinge support	1	040.08.01	Stainless steel AISI 304	Brushed
1	Cover	1	040.01.03	Stainless steel AISI 304	Brushed

GENERAL DIMENSION UNLESS OTHERWISE STATED ACCORDING TO DIN 7168		DESCRIPTION:	
CLASS	NOMINAL MEASUREMENTS (mm)	Toilet roll holder	
0.5 UNTIL 3	±0.1	VERSION NAME: stainless steel ARTICLE NR.: 3090.3.09.46	
3 UNTIL 6	±0.1		
6 UNTIL 30	±0.2		
30 UNTIL 120	±0.3		
120 UNTIL 400	±0.5	EAN: 4008913090404	
400 UNTIL 1000	±0.8	PROJECT: 040-Boston	
1000 UNTIL 2000	±1.2	DRAWING NR.: 040.09.00.TS	
2000 UNTIL 4000	±2	TIGER Tiger Products b.v. Winde 3, PO box 11 5660 AA Geldrop The Netherlands	
PROJECTION:		GENERAL ANGLE: ±0.5°	
DRAWN BY: MS		GENERAL ROUGHNESS: 0.8	
CHECKED BY:		UNITS: mm	
DATE: 23-8-2006		SCALE: 1:2	
STATUS: Production		FORMAT: A2	
PRINT DATE: 3-10-2024		SHEET: 2/3	
INT.REV.NR.: 02			