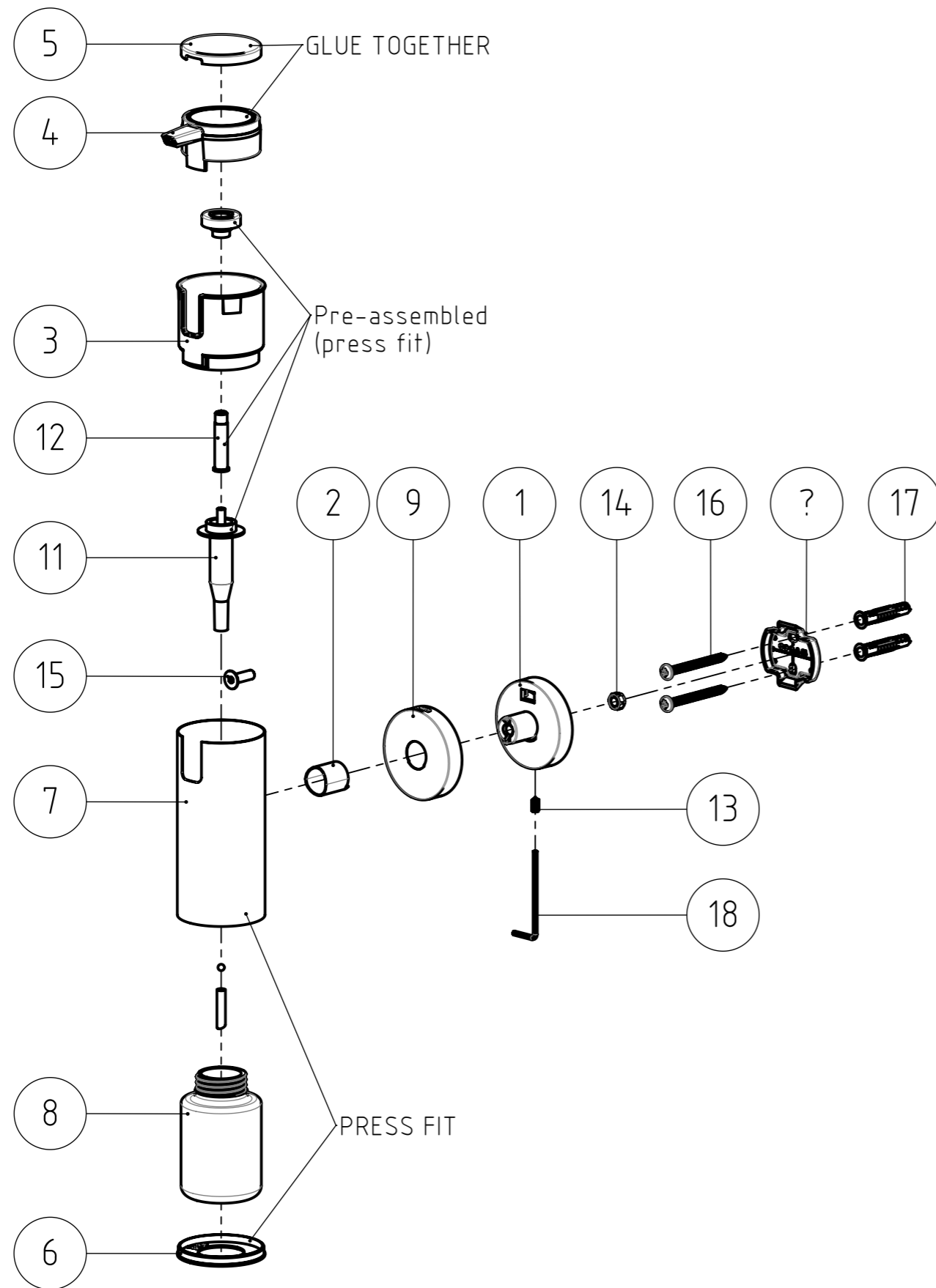
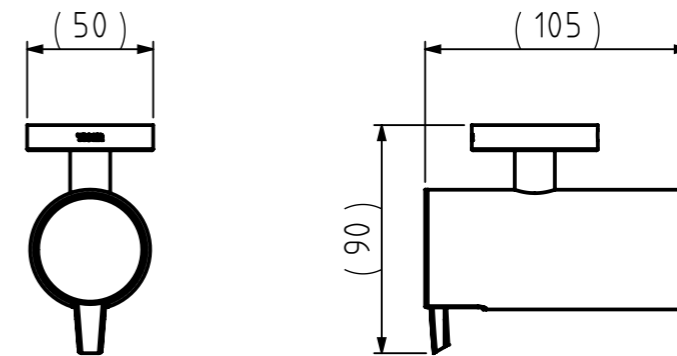


FINAL DRAWING



REVISIONS				
REV.	DESCRIPTION	DATE	BY	APPROVED
-	See 130.04.00.TC	-	-	-



18	2mm Hexagonal L-tool	1	DIN.911	Tool steel	-
17	Fischer UX6 plug	2	FIX.0028	-	-
16	Cross recessed pan head tapping screw st4,2x45mm	2	DIN.7981 CZ	Stainless steel A2	-
15	HEX. SOCKET COUNTERSUNK (SMALL) HEAD SCREW, M5x16mm	1	DIN.7991	Stainless steel A2	-
14	SELF PREVAILING NUT, M5	1	DIN.0985	Stainless steel A2	-
13	HEX. SOCKET SET SCREW WITH CONE POINT, M4x8mm	1	DIN.0914	Stainless steel A2	-
12	PIPE	1	BUY.06.09	PP, TRANSLUCENT	TECHNICAL SMOOTH
11	PUMP TUBE	1	BUY.06.01	PP	CLEAR
10	Wallplate Type 1	1	226.03.02	Stainless steel AISI 304	Sand blasted
9	Cover	1	040.01.03	Stainless steel AISI 430	Powder coated, texture VDI 3400 ref.30 - RAL 9005 (Jet black)
8	BOTTLE SHORT	1	130.04.06	PET	TRANSPARENT
7	Bottle housing small short	1	130.04.03	Stainless steel AISI 430	Powder coated, texture VDI 3400 ref.30 - RAL 9005 (Jet black)
6	Bottom cover	1	130.01.08	PP - Black RAL 9005, semi gloss	Texture VDI 3400 ref.30 (standard)
5	Lid cover	1	130.01.07	Stainless steel AISI 430	Powder coated, texture VDI 3400 ref.30 - RAL 9005 (Jet black)
4	Dispenser lid	1	130.01.05	ABS - Black RAL 9005, semi gloss	Texture VDI 3400 ref.30 (standard)
3	Ring cover	1	130.01.04	ABS - Black RAL 9005, semi gloss	Texture VDI 3400 ref.30 (standard)
2	Support tube	1	130.01.02	Stainless steel AISI 430	Powder coated, texture VDI 3400 ref.30 - RAL 9005 (Jet black)
1	Wall support	1	130.01.01	Zamac3	Chromium Plated
NR.	DESCRIPTION	QTY.	DRAW.NR.	MATERIAL	TREATMENT

GENERAL DIMENSION UNLESS OTHERWISE STATED ACCORDING TO DIN 7168							DESCRIPTION:	
CLASS	NOMINAL MEASUREMENTS (mm)						Soap dispenser xs	
	0.5 UNTIL 3	3 UNTIL 6	6 UNTIL 30	30 UNTIL 120	120 UNTIL 400	400 UNTIL 1000		
M (MIDDLE)	±0.1	±0.1	±0.2	±0.3	±0.5	±0.8	±1.2	±2
PROJECTION:	GENERAL ANGLE:			EAN:		VERSION NAME:		ARTICLE NR.:
	±0,5°			4008913059432		black		3059.3.07.46
DRAWN BY:	MS		GENERAL ROUGHNESS:		0,8/√		PROJECT:	
CHECKED BY:	FH						130-Boston	
DATE:	1-4-2009		UNITS:		mm		DRAWING NR.:	
STATUS:	Production		SCALE:		1:3		130.04.00.TB	
PRINT DATE:	3-10-2024		FORMAT:		A3		TIGER Tiger Products b.v. Winde 3, PO box 11 5660 AA Geldrop The Netherlands	
INT.REV.NR.:	0101		SHEET:		3/3			

The reproduction, distribution and utilization of this document as well as the communication of its contents to others without express authorization is prohibited. Offenders will be held liable for the payment of damages. All rights reserved in the event of the grant of a patent, utility model or design. Copyright reserved.