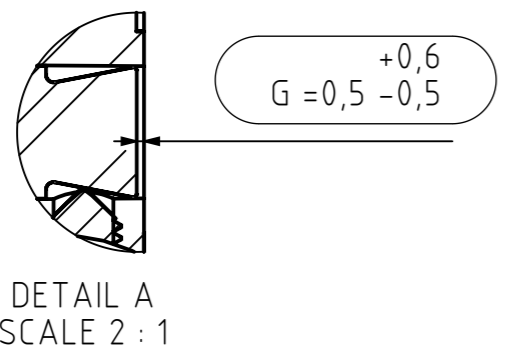
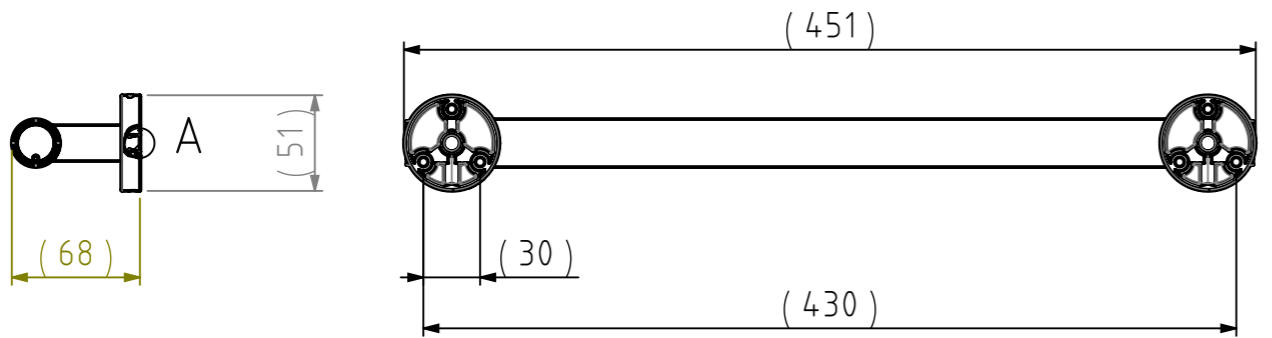
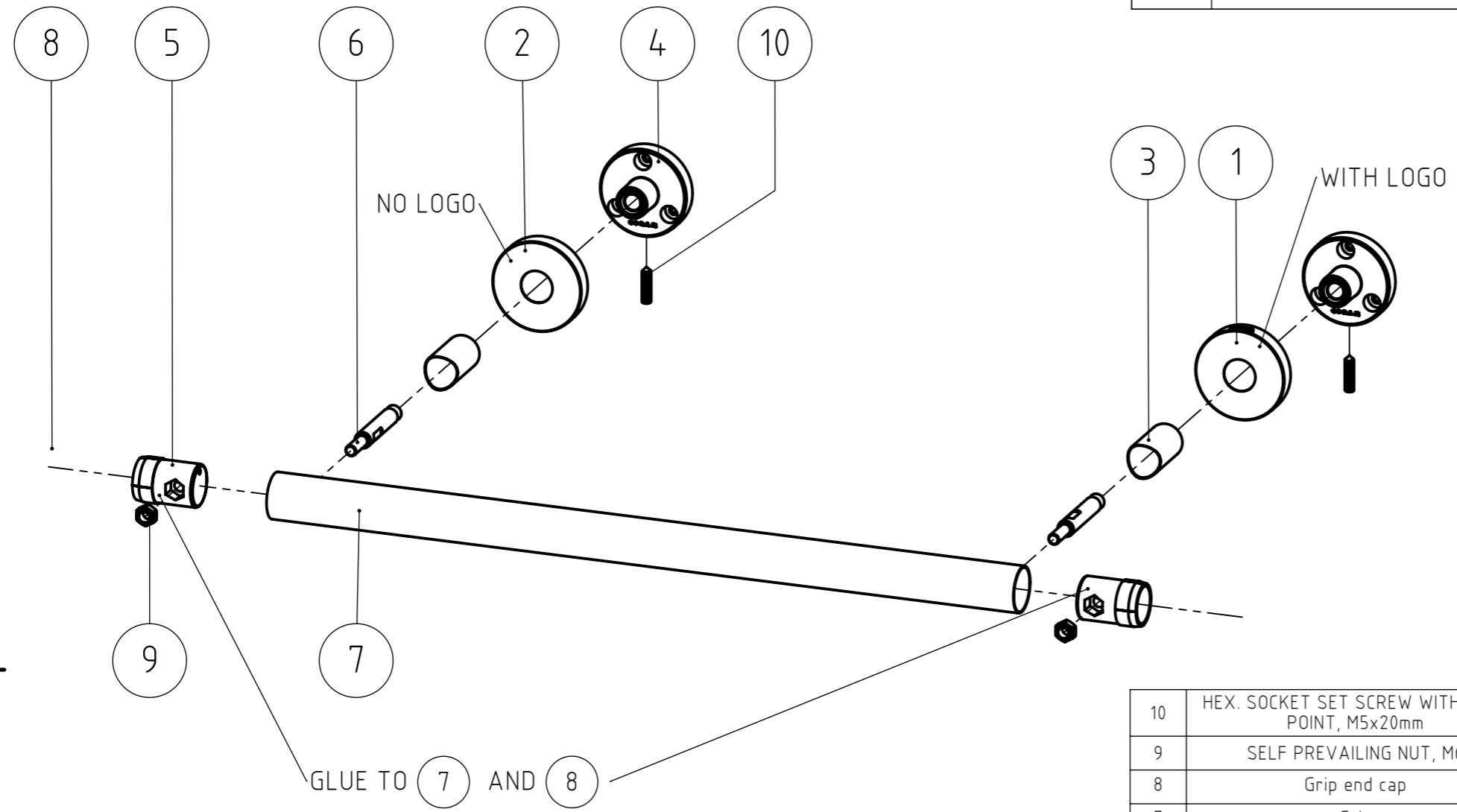


FINAL DRAWING

REVISIONS				
REV.	DESCRIPTION	DATE	BY	APPROVED
-	See TC	-	-	-



NR.	DESCRIPTION	QTY.	DRAW.NR.	MATERIAL	TREATMENT
10	HEX. SOCKET SET SCREW WITH CONE POINT, M5x20mm	2	DIN.0914	Stainless steel A2	-
9	SELF PREVAILING NUT, M6	2	DIN.0985	Stainless steel A2	-
8	Grip end cap	2	040.15.03	Stainless steel AISI 430	Chromium Plated
7	Grip	1	124.09.02	Stainless steel AISI 430	Chromium Plated
6	Assembly screw	2	124.08.03	Stainless steel 303 (CNC)	-
5	Tube connector	2	124.08.02	Zamac3	Chromium Plated
4	Wall bracket 3pt	2	124.08.01	Zamac5	Chromium Plated
3	Cover tube	2	124.02.05	Stainless steel AISI 430	Chromium Plated
2	Cover, no logo	1	124.02.04	Stainless steel AISI 430	Chromium Plated
1	Cover, logo	1	124.02.04	Stainless steel AISI 430	Chromium Plated

GENERAL DIMENSION UNLESS OTHERWISE STATED ACCORDING TO DIN 7168								DESCRIPTION:		
CLASS	NOMINAL MEASUREMENTS (mm)							Safety grip handle 45		
	0.5 UNTIL 3	3 UNTIL 6	6 UNTIL 30	30 UNTIL 120	120 UNTIL 400	400 UNTIL 1000	1000 UNTIL 2000			2000 UNTIL 4000
M (MIDDLE)	±0.1	±0.1	±0.2	±0.3	±0.5	±0.8	±1.2	±2	VERSION NAME:	ARTICLE NR.:
PROJECTION:	GENERAL ANGLE:			EAN:		chrome plated		915807-02-45		
PROJECTION:	±0,5°			8712163192066		PROJECT:		124-Boston Comfort & Safety		
DRAWN BY:	F.H.			GENERAL ROUGHNESS:		0,8		DRAWING NR.:		
CHECKED BY:								124.09.00.TCP		
DATE:	8-8-2006			UNITS:		mm		TIGER Tiger Nederland b.v. Winde 3, PO box 11 5660 AA Geldrop The Netherlands		
STATUS:	Production			SCALE:		1:3				
PRINT DATE:	8-4-2026			FORMAT:		A3				
INT.REV.NR.:	0000			SHEET:		4/4				

The reproduction, distribution and utilization of this document as well as the communication of its contents to others without express authorization is prohibited. Offenders will be held liable for the payment of damages. All rights reserved in the event of the grant of a patent, utility model or design. Copyright reserved.