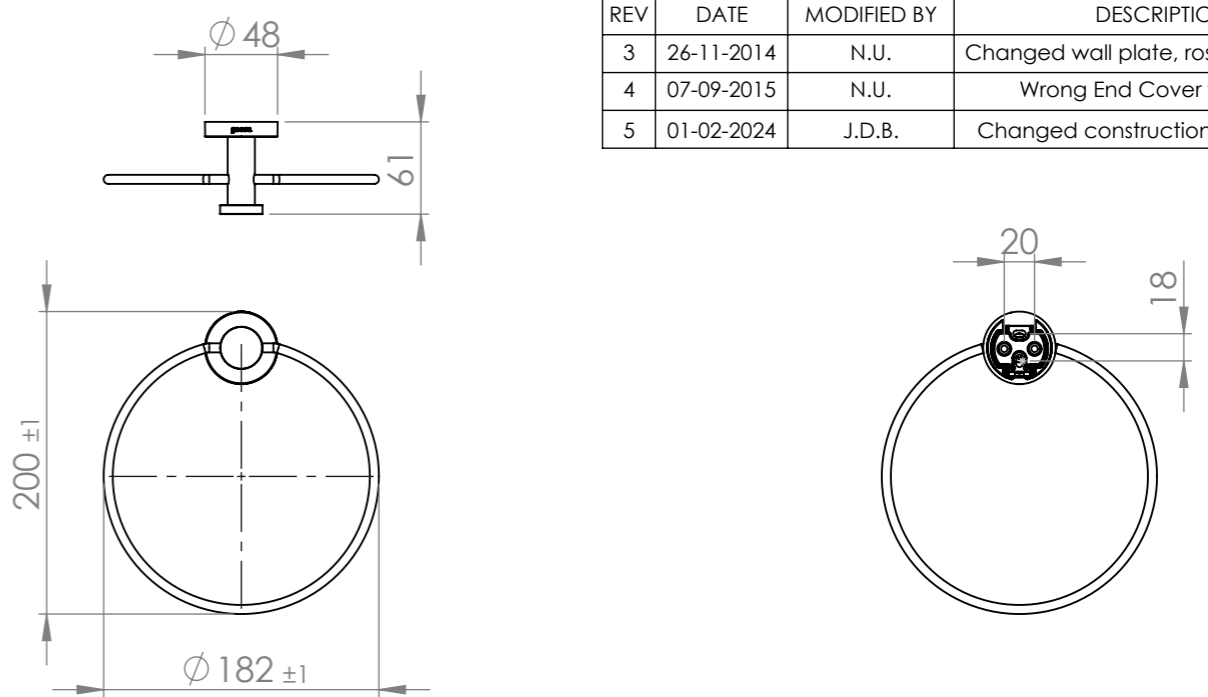


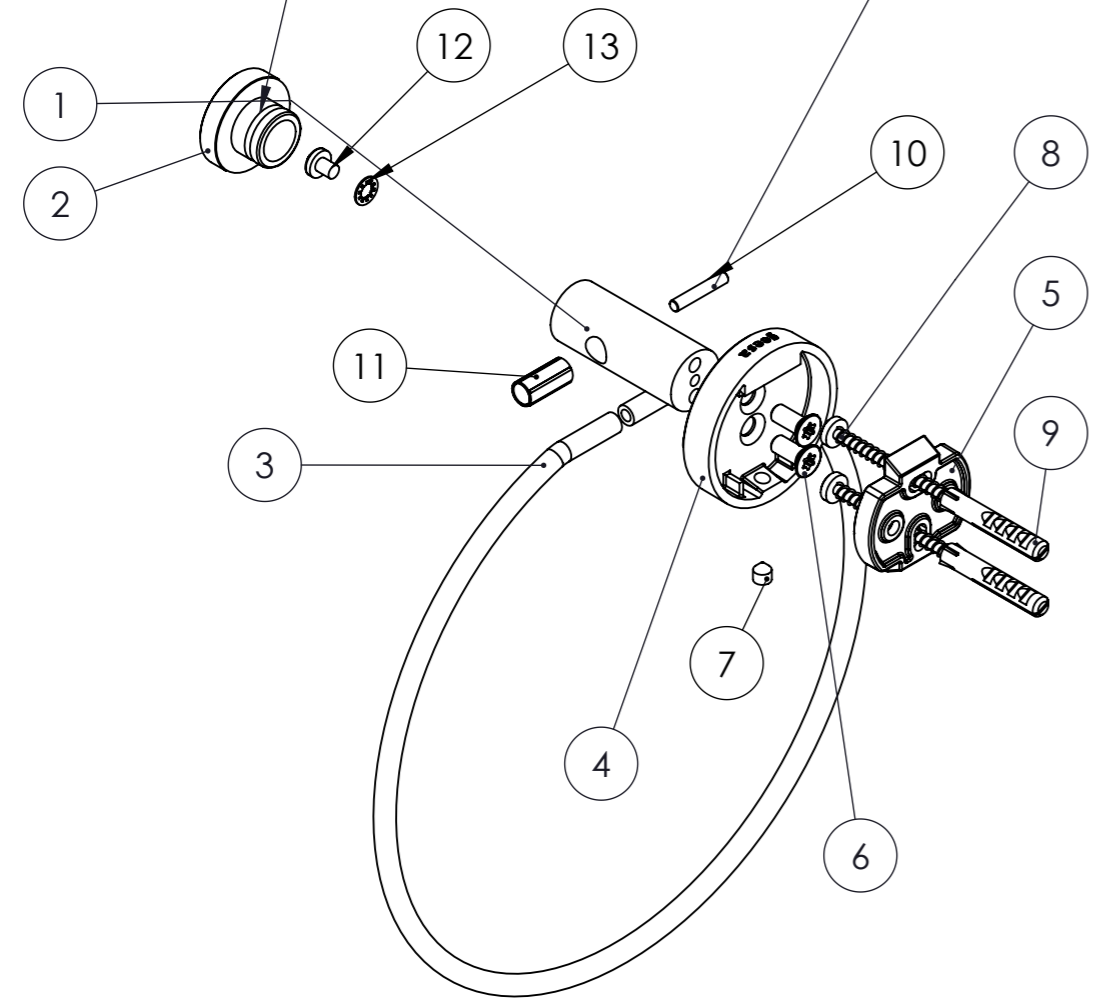
Unless otherwise specified:
 Angle Dimension +/- 0.5 degrees
 Linear Dimension +/- 0.5 mm
 Corners and edges 0.2 mm



REV	DATE	MODIFIED BY	DESCRIPTION
3	26-11-2014	N.U.	Changed wall plate, rosette, setscrew
4	07-09-2015	N.U.	Wrong End Cover was used
5	01-02-2024	J.D.B.	Changed construction to fixate ring

FIX WITH GLUE,
 LOCTITE 3504 and
 activator 7090.

FIX WITH GLUE,
 LOCTITE 3504 and
 activator 7090.



13	1			Spring Ring	Stainless st	
12	1			Screw M4	PA 6	
11	1	280.01.02		Bushing	PA 6	
10	1	280.01.01		Pin	Hpb59-1	
9	2	001297	225000-9	Plug Fischer UX6x35 No Collar	Material <not specified>	
8	2	001595	228500-4	4.2x45mm DIN 7981C PZ2	Zinc plated Steel	Cross recessed pan head tapping screw, Stafa DUPLEX 700 coating
7	1	003923	221000-15	DIN 914 - M5 x 6-N	Stainl.st. A2	Hexagon socket set screw with cone point
6	2	002755	22127-4	M5x12mm DIN 965 A2	Stainl.st. A2	Torx countersunk head screw
5	1	010381	226500-7	Wall plate Nemox	Zinc Alloy-3	
4	1	010142	226500-8	Rosette Engraved	Zamac 3	
3	1	003168		Ring	CuZn40.67P b1.72	
2	1	001669		End cover Ø28mm	CuZn35.68P b0.01	Used in tube Ø18x0.8mm
1	1	003164		Ring holder	CuZn40.67P b1.72	
NO.	QTY.	Drawing nr.	Article nr.	DESCRIPTION	MATERIAL	NOTES

- Surfaces must be free from scratches, burrs and dents.
- A 3D file is linked to this drawing, for additional information please check 3D file.

Title Towel ring				Note	
Material -				Series Nemox	
Norm.				Article nr. 916504-02	
Finish				Drawing nr. 003169	
Weight (gr) 315.14				A3	
Vol. (cm³) 41.00				Sheet no. _____	
Am. projectie		Scale: 1:5	Revision 08	Drawn P. van Olphen 28-01-2010	Sheet1/No.of sheets 1
Checked N.U.		07-09-2015		Phone: 0031-(33)4633214 Email: geesa@geesa.nl	