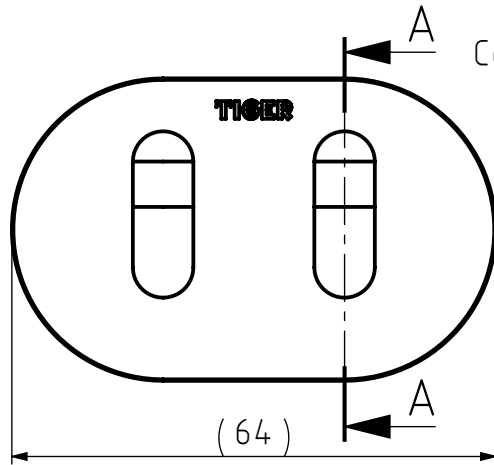
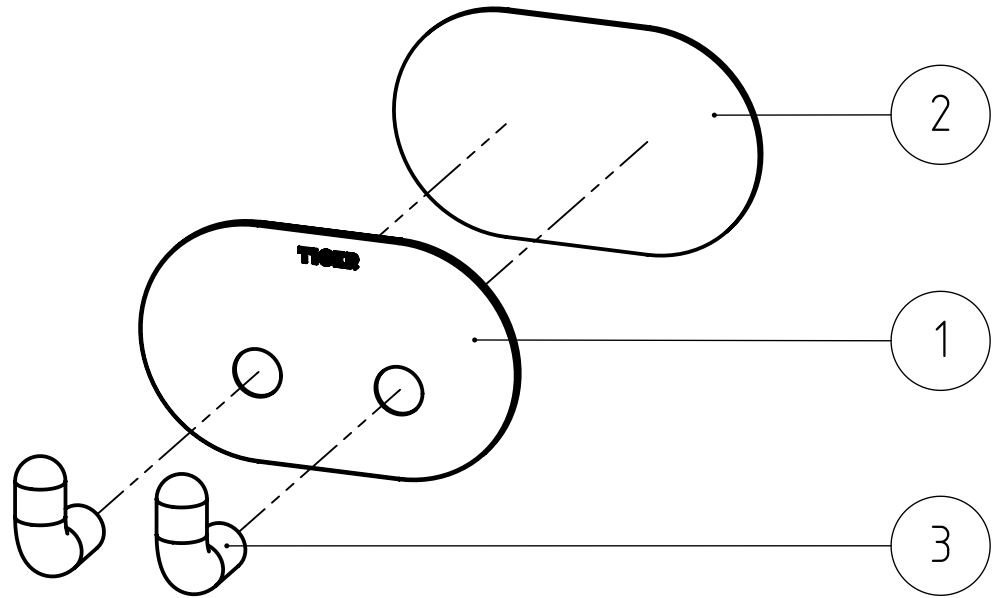
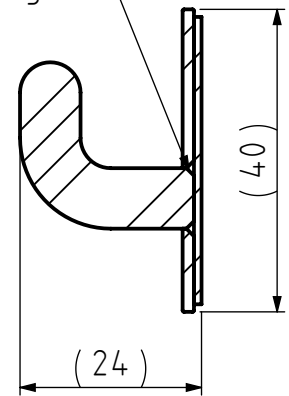


# FINAL DRAWING



Connect by riveting (2x)




SECTION A-A

**Remarks:**

- Make the back of the riveting as flat as possible.

NR.	DESCRIPTION	QTY.	DRAW.NR.	MATERIAL	TREATMENT
3	Hook Pinky	2	178.06.02	Stainless steel 304	Brushed
2	Adhesive foam	1	225.03.02	3M / NO.1600 / Foam tape 1,0 mm	-
1	Wall plate	1	225.03.01	Stainless steel 304	Brushed

GENERAL DIMENSION UNLESS OTHERWISE STATED ACCORDING TO DIN 7168				DESCRIPTION:						
CLASS	NOMINAL MEASUREMENTS (mm)								Pinky round double	
	0.5 UNTIL 3	3 UNTIL 6	6 UNTIL 30	30 UNTIL 120	120 UNTIL 400	400 UNTIL 1000	1000 UNTIL 2000	2000 UNTIL 4000		
M (MIDDLE)	±0.1	±0.1	±0.2	±0.3	±0.5	±0.8	±1.2	±2	VERSION NAME: stainless steel	
PROJECTION:		GENERAL ANGLE:		EAN:		ARTICLE NR.:		11174.3.09.42		
DRAWN BY: MS		±0,5°		4008911117424		PROJECT:		225-hooks 2016		
CHECKED BY: FVP		GENERAL ROUGHNESS: 0,8		UNITS: mm		DRAWING NR.:		225.03.00.TS		
DATE: 16-9-2016		SCALE: 1:1		FORMAT: A4		 Tiger Products b.v. Winde 3, PO box 11 5660 AA Geldrop The Netherlands				
STATUS: Production		SHEET: 1/2		INT.REV.NR.: 00						