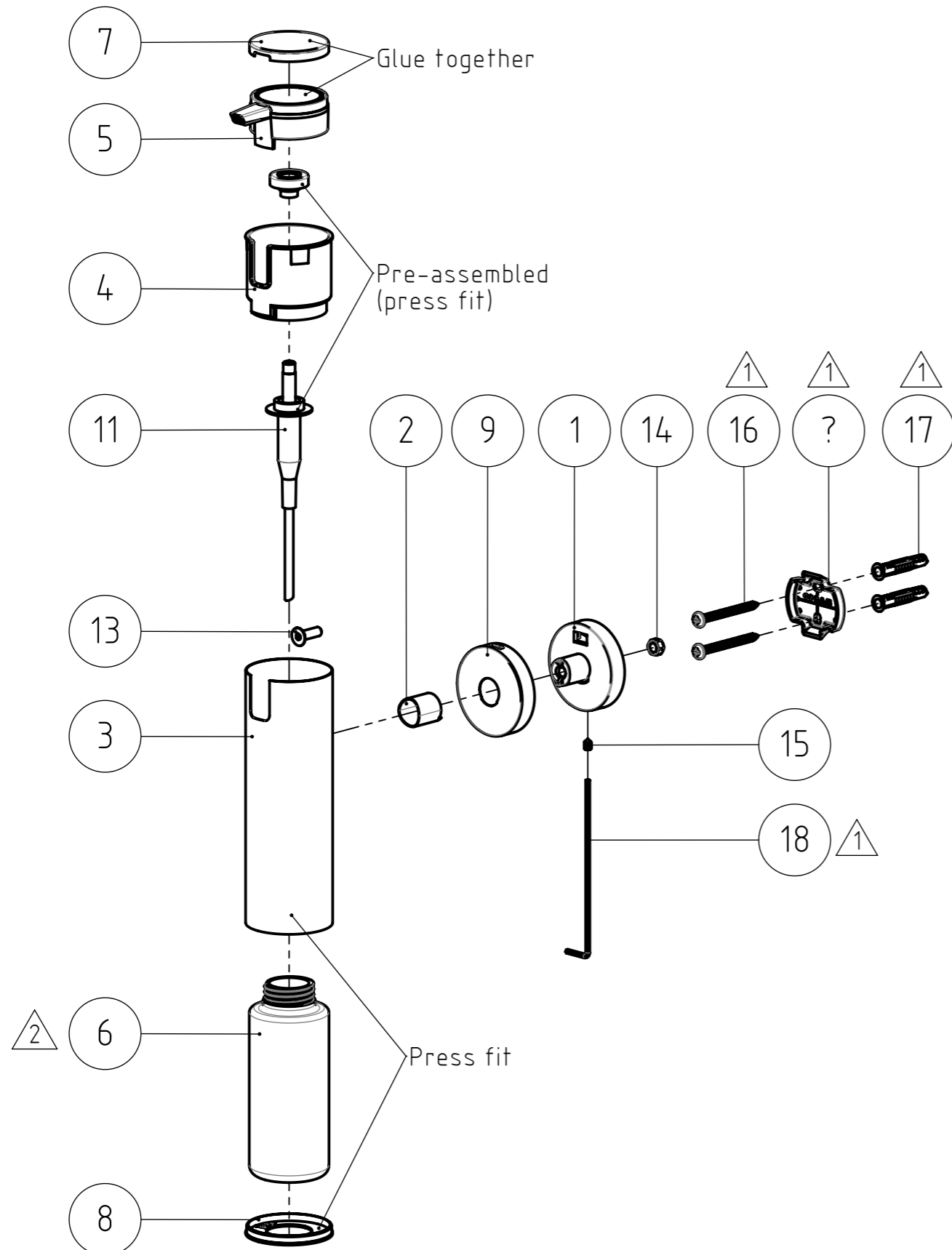


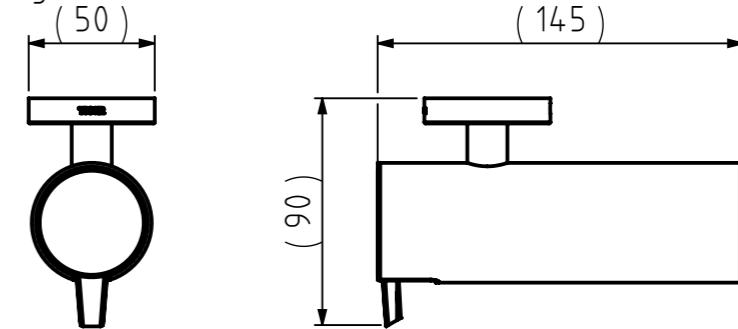
FINAL DRAWING



REVISIONS

REV.	DESCRIPTION	DATE	BY	APPROVED
1	- 040.01.02 Wall bracket 2 replaced by 226.01.01 Wallplate Type 1. - Screws, plugs and L-tool added to assembly drawing. - Black version created.	9-10-2017	MS	WW
2	Wall thickness of Bottle changed.	11-8-2022	MS	-

2022- high breakage of bottle. To be tested with 0.5mm



NR.	DESCRIPTION	QTY.	DRAW.NR.	MATERIAL	TREATMENT
18	2mm Hexagonal L-tool long, L=100mm	1	DIN.911	Tool steel	-
17	Fischer UX6 plug	2	FIX.0028	-	-
16	Cross recessed pan head tapping screw st4,2x45mm	2	DIN.7981 CZ	Stainless steel A2	-
15	HEX. SOCKET SET SCREW WITH CONE POINT, M4x6mm	1	DIN.0914	Stainless steel A2	-
14	SELF PREVAILING NUT, M5	1	DIN.0985	Stainless steel A2	-
13	HEX. SOCKET COUNTERSUNK (SMALL) HEAD SCREW, M5x16mm	1	DIN 7991	Stainless steel A2	-
11	Pump unit	1	BUY.06.00	Various	Various
10	Wallplate Type 1	1	226.03.02	Stainless steel AISI 304	Sand blasted
9	Cover	1	040.01.03	Stainless steel AISI 304	Brushed
8	Bottom cover	1	130.01.08	PP - Black RAL 9005, semi gloss	Texture VDI 3400 ref.30 (standard)
7	Lid cover	1	130.01.07	Stainless steel AISI 304	Brushed
6	Bottle	1	130.01.06	PET	Transparent, clear
5	Dispenser lid	1	130.01.05	ABS - Black RAL 9005, semi gloss	Texture VDI 3400 ref.30 (standard)
4	Ring cover	1	130.01.04	ABS - Black RAL 9005, semi gloss	Texture VDI 3400 ref.30 (standard)
3	Bottle housing	1	130.01.03	Stainless steel AISI 304	Brushed
2	Support tube	1	130.01.02	Stainless steel AISI 304	Brushed
1	Wall support	1	130.01.01	Zamac3	Chromium Plated

GENERAL DIMENSION UNLESS OTHERWISE STATED ACCORDING TO DIN 7168		DESCRIPTION:	
NOMINAL MEASUREMENTS (mm)		Soap dispenser s	
CLASS	0.5 UNTIL 3 3 UNTIL 6 6 UNTIL 30 30 UNTIL 120 120 UNTIL 400 400 UNTIL 1000 1000 UNTIL 2000 2000 UNTIL 4000		
M (MIDDLE)	±0.1 ±0.1 ±0.2 ±0.3 ±0.5 ±0.8 ±1.2 ±2		
PROJECTION:	GENERAL ANGLE: ±0,5°	EAN: 4008913060414	VERSION NAME: stainless steel
PROJECTION:			ARTICLE NR.: 3060.3.09.46
DRAWN BY:	MS	GENERAL ROUGHNESS: 0,8	PROJECT: 130-Boston
CHECKED BY:	-		DRAWING NR.: 130.01.00.TS
DATE:	1-4-2009	UNITS: mm	TIGER Tiger Products b.v. Winde 3, PO box 11 5660 AA Geldrop The Netherlands
STATUS:	Production	SCALE: 1:3	
PRINT DATE:	3-10-2024	FORMAT: A3	
INT.REV.NR.:	0101	SHEET: 1/3	

The reproduction, distribution and utilization of this document as well as the communication of its contents to others without express authorization is prohibited. Offenders will be held liable for the payment of damages. All rights reserved in the event of the grant of a patent, utility model or design. Copyright reserved.