

Suction cup F-OB 10x30 Silicone, G1/8" male SS, detectable, FCM

Article number: 0205912



- The silicone material complies with FDA 21 CFR 177.2600 and EU 1935/2004.
- Long lasting high-end silicone material
- A low percentage metal additive (Fe) is mixed with the rubber material to make it detectable.
- Suitable for frozen and raw food.
- Excellent grip on oblong parts with irregular surfaces and different heights, even at fast speeds and accelerations
- Available with male threaded and integrated Acid proof Stainless steel fittings.
- Easy to clean with hygienic design. No dust/dirt pockets.
- Low vacuum level needed to collapse bellows. Reduces risk for damaging the handled food product

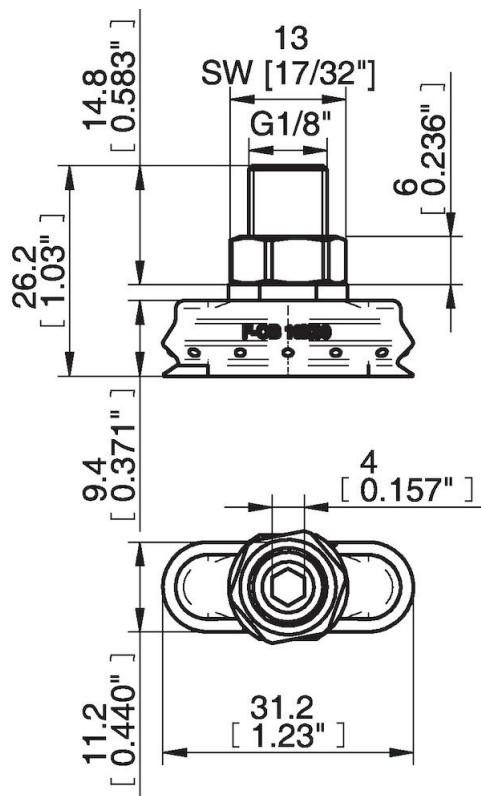
Technical data

Description	Unit	Value
Suction cup shape	-	Bellows
Application	-	Food contact materials (FDA & EU), detectable
Suction cup design	-	Oval
Characteristics	-	Food contact materials (FDA & EU), detectable
Material	-	Silicone (SIL)
Load, torque, max.	Nm	13
Weight, min.	g	14.4
Suction cup model	-	F-OB
Volume	cm ³	1
Height	mm	26.2
Length	mm	31
Fitting size	-	1/8"
Fitting option	-	None
Fitting style	-	Male
Fitting type	-	G-thread
Width	mm	11
Material	-	ASTM 316L
Suction cup model	-	F-OB 10x30
Movement, vertical max.	mm	4
Curve radius, min.	mm	4

Performance - Lifting forces

F-OB 10x30	Vertical (N)	Parallel (N)
10 -kPa	1.4	1.5
20 -kPa	2.4	2.3
40 -kPa	5.2	4.6

Dimensional drawings



Values specified in this data sheet are tested at (unless otherwise stated):

- Room temperature (20°C [68°F] ± 3°C [5.5°F]).
- Standard atmosphere (101.3 [29.9 inHg] ± 1.0 kPa [0.3 inHg]).
- Relative humidity 20-70%.
- Compressed air quality, DIN ISO 8573-1 class 4.