

COAX® cartridge MINI Si08-2, extra non-return valve

Article number: 0113587



- Two-stage COAX® cartridge - MINI - with small mounting dimensions.
- Large vacuum flow in relation to energy consumption.
- Good for handling porous materials or if surface leakage is present.

Technical data

| Description | Unit | Value |
|---------------------|------|---------------------------|
| Material | - | Al, Nitrile (NBR), PA, SS |
| Temperature, max. | °C | 80 |
| Temperature, min. | °C | -10 |
| Weight, max. | g | 9.9 |
| Weight, min. | g | 2.8 |
| Feed pressure, max. | MPa | 0.7 |

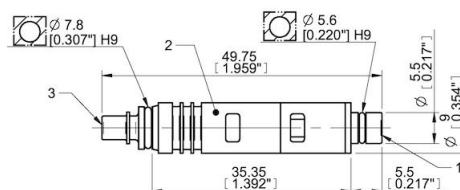
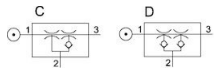
Performance

| Feed pressure MPa | Air consumption NI/s | Vacuum flow (NI/s) at different vacuum levels (-kPa) | | | | | | | | | | | | | | Max vacuum kPa |
|----------------------|-------------------------|--|------|------|------|------|------|------|------|----|----|----|----|----|---|-------------------|
| | | 0 | 10 | 20 | 30 | 40 | 50 | 60 | 70 | 75 | 80 | 90 | 95 | 99 | | |
| 0.4 | 0.31 | 0.71 | 0.53 | 0.34 | 0.26 | 0.18 | 0.09 | 0.01 | 0 | 0 | 0 | 0 | 0 | 0 | 0 | ≥60 |
| 0.5 | 0.38 | 0.77 | 0.61 | 0.43 | 0.29 | 0.23 | 0.15 | 0.08 | 0.01 | 0 | 0 | 0 | 0 | 0 | 0 | ≥70 |
| 0.6 | 0.44 | 0.77 | 0.67 | 0.51 | 0.33 | 0.23 | 0.16 | 0.12 | 0.08 | 0 | 0 | 0 | 0 | 0 | 0 | ≥75 |

| Feed pressure MPa | Air consumption NI/s | Evacuation time (s/l) to reach different vacuum levels (-kPa) | | | | | | | | | | | | Max vacuum kPa | | |
|----------------------|-------------------------|---|------|------|-----|-----|-----|-----|----|----|----|----|------|-------------------|-------|-----|
| | | 10 | 20 | 30 | 40 | 50 | 60 | 70 | 80 | 90 | 95 | 99 | 99.5 | | 100.3 | |
| 0.4 | 0.31 | 0.16 | 0.39 | 0.72 | 1.2 | 1.9 | 3.9 | 0 | 0 | 0 | 0 | 0 | 0 | 0 | 0 | ≥60 |
| 0.5 | 0.38 | 0.14 | 0.34 | 0.62 | 1 | 1.5 | 2.4 | 4.6 | 0 | 0 | 0 | 0 | 0 | 0 | 0 | ≥70 |
| 0.6 | 0.44 | 0.14 | 0.31 | 0.55 | 0.9 | 1.4 | 2.1 | 3.1 | 0 | 0 | 0 | 0 | 0 | 0 | 0 | ≥75 |

| Feed pressure MPa | Air consumption NI/s | Blow flow (NI/s) at different pressure levels (-kPa) | | | | | | | | | | | | | | Max pressure kPa | |
|----------------------|-------------------------|--|------|----|------|------|------|------|------|----|----|-----|-----|-----|-----|---------------------|-----|
| | | 0 | 10 | 20 | 30 | 40 | 50 | 60 | 70 | 80 | 90 | 100 | 110 | 120 | 130 | | 140 |
| 0.6 | 0.44 | 1.21 | 1.13 | 1 | 0.84 | 0.78 | 0.73 | 0.65 | 0.53 | 0 | 0 | 0 | 0 | 0 | 0 | 0 | ≥75 |

Dimensional drawings



Values specified in this data sheet are tested at (unless otherwise stated):

- Room temperature (20°C [68°F] ± 3°C [5.5°F]).
- Standard atmosphere (101.3 [29.9 inHg] ± 1.0 kPa [0.3 inHg]).
- Compressed air quality, DIN ISO 8573-1 class 4.

Accessories

0106344 | Exhaust adapter

0111977 | Silencer COAX® MINI