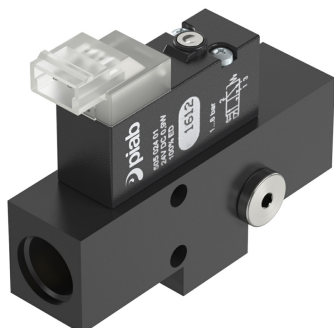


Booster Release Ejector 025, 0,8 mm nozzle, M

Article number: 0244551



- Compact, robust design with low weight.
- Patented design with triple-release effect for ultra-fast blow-off.
- The ejector may be used as suction cup holder.
- Connections: M5 thread for vacuum sensor, electrical M8 3-pin connector..

Technical data

Description	Unit	Value
Material	-	Al, Cu, CuZn
Temperature, max.	°C	50
Temperature, min.	°C	0
Weight, min.	g	35
Feed pressure, max.	MPa	0.8
Feed pressure, min.	MPa	0.45
Safety classification	-	IP40
Electric connection	-	M
Noise level, max.	dBA	90
Noise level, min.	dBA	77
Current, consumption (typical)	mA	38
Feed pressure, optimum, min.	MPa	0.5
Air consumption (Blow-Off at 0,5 MPa/72.5 psi)	NI/s	0,75
Supply voltage, max.	VDC	26.4
Supply voltage, min.	VDC	21.2

Performance

Feed pressure MPa	Air consumption NI/s	Vacuum flow (NI/s) at different vacuum levels (-kPa)											Max vacuum kPa		
		0	10	20	30	40	50	60	70	75	80	90		95	99
0.5	0.5	0.433	0.35	0.305	0.258	0.222	0.172	0.122	0.042	0	0.007	0	0	0	≥80

Feed pressure MPa	Air consumption NI/s	Evacuation time (s/l) to reach different vacuum levels (-kPa)											Max vacuum kPa		
		10	20	30	40	50	60	70	80	90	95	99		99.5	100.3
0.5	0.5	0.255	0.561	0.916	1.332	1.841	2.523	3.747	7.885	0	0	0	0	0	≥80

Values specified in this data sheet are tested at (unless otherwise stated):

- Room temperature (20°C [68°F] ± 3°C [5.5°F]).
- Standard atmosphere (101.3 [29.9 inHg] ± 1.0 kPa [0.3 inHg]).
- Compressed air quality, DIN ISO 8573-1 class 4.