

# Suction cup F33 Silicone FCM, 1/8" NPSF female

Article number: 9914252



- Designed for opening bags in bag filling stations.
- Also suitable to handle thin and sensitive sheets, such as paper and plastic films.
- The thin, conformable lip and clever cleat pattern prevent sensitive object/sheet to get sucked in and damaged while giving enhanced lifting force.
- FDA 21 CFR 177.2600 & EU 1935/2004 approved silicone material.

## Technical data

| Description              | Unit            | Value  |
|--------------------------|-----------------|--|
| Suction cup shape        | -               | Flat   |
| Application              | -               | Bag opening/thin paper - slip sheets/film, Food contact materials (FDA & EU), non-detectable |
| Suction cup design       | -               | Round  |
| Characteristics          | -               | Bag opening/thin paper - slip sheets/film, Food contact materials (FDA & EU), non-detectable |
| Material                 | -               | Silicone (SIL)   |
| Weight, min.             | g               | 15.4   |
| Suction cup model        | -               | F  |
| Volume                   | cm <sup>3</sup> | 2.1  |
| Height                   | mm              | 38.5   |
| Outer diameter, min.     | mm              | 32.6   |
| Outer diameter, actuated | mm              | 33.8   |
| Fitting size             | -               | 1/8"   |
| Fitting option           | -               | None   |
| Fitting style            | -               | Female   |
| Fitting type             | -               | NPSF-thread  |
| Suction cup model        | -               | F33 FDA  |
| Movement, vertical max.  | mm              | 1.5  |
| Curve radius, min.       | mm              | 35   |

## Performance - Lifting forces

| F33 FDA | Vertical (N) | Parallel (N) |
|---------|--------------|--------------|
| 20 -kPa | 16           | 13.5         |
| 60 -kPa | 38           | 32.5         |
| 90 -kPa | 49           | 41.5         |

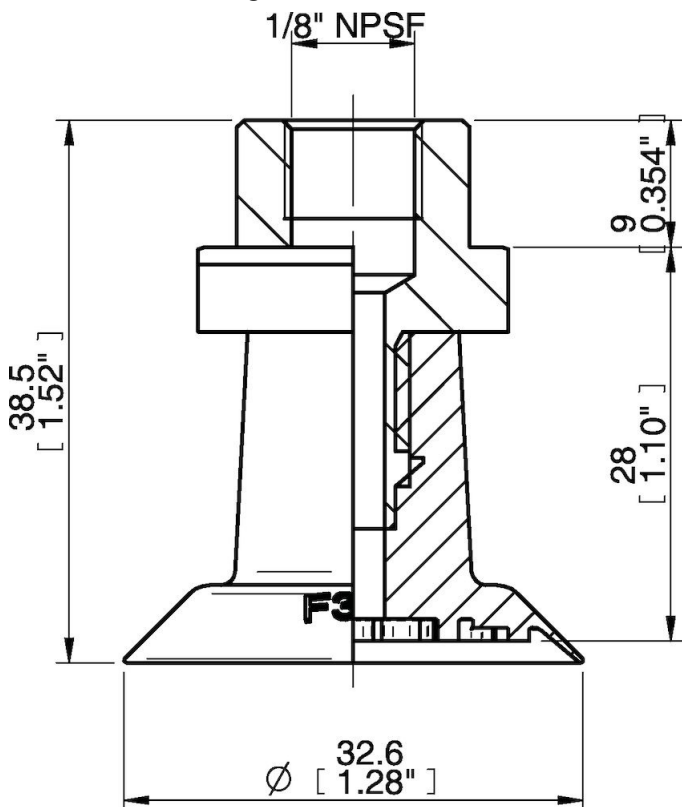
## Material

|                        |                              |
|------------------------|------------------------------|
| Name                   | Silicone (SIL FDA) 50° Shore |
| Colour                 | Blue                         |
| Temperature, min.   °C | -40                          |
| Temperature max.   °C  | 200                          |
| Hardness   °Shore A    | 50                           |

## Material resistance

|                    |           |
|--------------------|-----------|
| Alcohol            | Good      |
| Concentrated acids | Poor      |
| Ethanol            | n/a       |
| Hydrolysis         | Fair      |
| Methanol           | n/a       |
| Oil                | Poor      |
| Oxidation          | Excellent |
| Petrol             | Poor      |
| Wear resistance    | Good      |
| Weather and ozone  | Excellent |

## Dimensional drawings



Values specified in this data sheet are tested at (unless otherwise stated):

- Room temperature (20°C [68°F] ± 3°C [5.5°F]).
- Standard atmosphere (101.3 [29.9 inHg] ± 1.0 kPa [0.3 inHg]).
- Relative humidity 20-70%.
- Compressed air quality, DIN ISO 8573-1 class 4.

## Accessories

0201967 | Fitting G1/4" male

## Spare parts

0200328 | Suction cup F33 Silicone FCM

0201969 | Fitting 1/8" NPSF female