

# COAX® cartridge MINI Xi10-3, holding cap

Article number: 0120299



- Three-stage COAX® cartridge – MINI.
- High vacuum flow at deep vacuum levels to 94 - kPa.
- Quick response time when deep vacuum is needed.
- Suitable for handling sealed objects with high pick-up speed.
- Large vacuum flow in relation to energy consumption

## Technical data

| Description         | Unit | Value                     |
|---------------------|------|---------------------------|
| Material            | -    | Al, Nitrile (NBR), PA, SS |
| Temperature, max.   | °C   | 80                        |
| Temperature, min.   | °C   | -10                       |
| Weight, max.        | g    | 12.5                      |
| Weight, min.        | g    | 4.7                       |
| Feed pressure, max. | MPa  | 0.7                       |

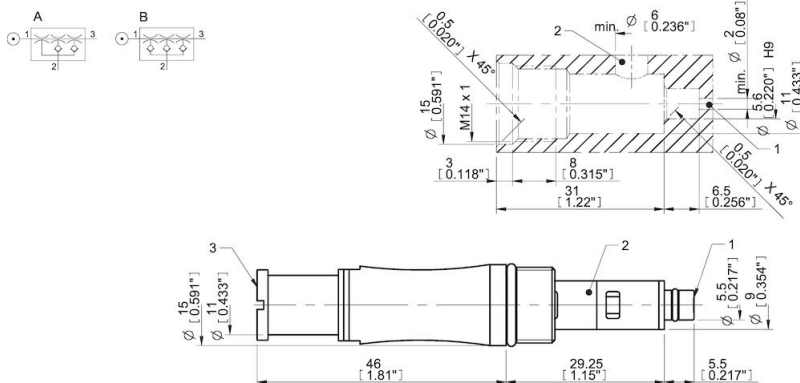
## Performance

| Feed pressure<br>MPa | Air consumption<br>Nl/s | Vacuum flow (Nl/s) at different vacuum levels (-kPa) |      |      |      |      |      |      |      |    |       |       |    | Max vacuum<br>kPa |     |
|----------------------|-------------------------|--|------|------|------|------|------|------|------|----|-------|-------|----|-------------------|-----|
|                      |                         | 0  | 10   | 20   | 30   | 40   | 50   | 60   | 70   | 75 | 80    | 90    | 95 |                   | 99  |
| 0.45                 | 0.42                    | 1.39   | 0.64 | 0.46 | 0.28 | 0.19 | 0.15 | 0.11 | 0.07 | 0  | 0.043 | 0.003 | 0  | 0                 | ≥92 |
| 0.5                  | 0.46                    | 1.43   | 0.7  | 0.5  | 0.33 | 0.19 | 0.15 | 0.11 | 0.07 | 0  | 0.045 | 0.011 | 0  | 0                 | ≥94 |
| 0.6                  | 0.54                    | 1.45   | 0.79 | 0.53 | 0.42 | 0.3  | 0.16 | 0.11 | 0.08 | 0  | 0.041 | 0.01  | 0  | 0                 | ≥93 |

| Feed pressure<br>MPa | Air consumption<br>Nl/s | Evacuation time (s/l) to reach different vacuum levels (-kPa) |      |      |     |     |     |     |     |     |    |    |      | Max vacuum<br>kPa |       |
|----------------------|-------------------------|---|------|------|-----|-----|-----|-----|-----|-----|----|----|------|-------------------|-------|
|                      |                         | 10  | 20   | 30   | 40  | 50  | 60  | 70  | 80  | 90  | 95 | 99 | 99.5 |                   | 100.3 |
| 0.45                 | 0.42                    | 0.1   | 0.28 | 0.55 | 1   | 1.5 | 2.2 | 3.4 | 5.2 | 9.5 | 0  | 0  | 0    | 0                 | ≥92   |
| 0.5                  | 0.46                    | 0.09  | 0.26 | 0.5  | 0.9 | 1.5 | 2.2 | 3.4 | 5.2 | 8.8 | 0  | 0  | 0    | 0                 | ≥94   |
| 0.6                  | 0.54                    | 0.09  | 0.24 | 0.45 | 0.7 | 1.2 | 1.9 | 3   | 4.7 | 8.6 | 0  | 0  | 0    | 0                 | ≥93   |

| Feed pressure<br>MPa | Air consumption<br>Nl/s | Blow flow (Nl/s) at different pressure levels (-kPa) |     |     |      |      |      |      |      |      |    |     |     |     |     | Max pressure<br>kPa |     |     |
|----------------------|-------------------------|--|-----|-----|------|------|------|------|------|------|----|-----|-----|-----|-----|---------------------|-----|-----|
|                      |                         | 0  | 10  | 20  | 30   | 40   | 50   | 60   | 70   | 80   | 90 | 100 | 110 | 120 | 130 |                     | 140 |     |
| 0.6                  | 0.54                    | 1.8  | 1.3 | 1.1 | 0.98 | 0.85 | 0.84 | 0.79 | 0.71 | 0.61 | 0  | 0   | 0   | 0   | 0   | 0                   | 0   | ≥93 |

## Dimensional drawings



Values specified in this data sheet are tested at (unless otherwise stated):

- Room temperature (20°C [68°F] ± 3°C [5.5°F]).

- Standard atmosphere (101.3 [29.9 inHg]  $\pm$  1.0 kPa [0.3 inHg]).
- Compressed air quality, DIN ISO 8573-1 class 4.

#### **Accessories**

0111977 | Silencer COAX® MINI