

COAX® cartridge MIDI Si32-2, extra non-return valve

Article number: 0107709



- Two-stage COAX® cartridge - MIDI - with small mounting dimension for limited spaces.
- Large vacuum flow in relation to energy consumption.
- Suitable for high-volume evacuation when handling porous materials or if surface leakage is present.
- Efficient generator of blow-air. Recommended for low overpressures (0 - 0.05 MPa).

Technical data

| Description | Unit | Value |
|---------------------|------|---------------------------|
| Material | - | Al, Nitrile (NBR), PA, SS |
| Temperature, max. | °C | 80 |
| Temperature, min. | °C | -10 |
| Weight, max. | g | 57 |
| Weight, min. | g | 27 |
| Feed pressure, max. | MPa | 0.7 |

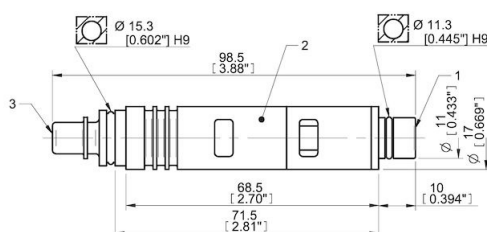
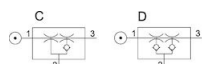
Performance

| Feed pressure MPa | Air consumption Nl/s | Vacuum flow (Nl/s) at different vacuum levels (-kPa) | | | | | | | | | | | | | Max vacuum kPa | |
|----------------------|-------------------------|--|-----|-----|-----|------|------|------|------|----|----|----|----|----|-------------------|-----|
| | | 0 | 10 | 20 | 30 | 40 | 50 | 60 | 70 | 75 | 80 | 90 | 95 | 99 | | |
| 0.4 | 1.25 | 3.1 | 2.6 | 1.9 | 1.2 | 0.8 | 0.4 | 0.1 | 0 | 0 | 0 | 0 | 0 | 0 | 0 | ≥60 |
| 0.5 | 1.5 | 3.2 | 2.9 | 2.2 | 1.4 | 0.85 | 0.62 | 0.35 | 0.18 | 0 | 0 | 0 | 0 | 0 | ≥70 | |
| 0.6 | 1.75 | 3.3 | 3 | 2.6 | 1.7 | 0.9 | 0.6 | 0.5 | 0.35 | 0 | 0 | 0 | 0 | 0 | ≥75 | |

| Feed pressure MPa | Air consumption Nl/s | Evacuation time (s/l) to reach different vacuum levels (-kPa) | | | | | | | | | | | | | Max vacuum kPa |
|----------------------|-------------------------|---|------|------|------|------|------|-----|----|----|----|----|------|-------|-------------------|
| | | 10 | 20 | 30 | 40 | 50 | 60 | 70 | 80 | 90 | 95 | 99 | 99.5 | 100.3 | |
| 0.4 | 1.25 | 0.04 | 0.08 | 0.14 | 0.24 | 0.42 | 1 | 0 | 0 | 0 | 0 | 0 | 0 | 0 | ≥60 |
| 0.5 | 1.5 | 0.03 | 0.07 | 0.11 | 0.21 | 0.35 | 0.6 | 1 | 0 | 0 | 0 | 0 | 0 | 0 | ≥70 |
| 0.6 | 1.75 | 0.03 | 0.07 | 0.1 | 0.18 | 0.33 | 0.53 | 0.8 | 0 | 0 | 0 | 0 | 0 | 0 | ≥75 |

| Feed pressure MPa | Air consumption Nl/s | Blow flow (Nl/s) at different pressure levels (-kPa) | | | | | | | | | | | | | Max pressure kPa | |
|----------------------|-------------------------|--|------|------|------|-----|------|------|------|------|----|-----|-----|-----|---------------------|-----|
| | | 0 | 10 | 20 | 30 | 40 | 50 | 60 | 70 | 80 | 90 | 100 | 110 | 120 | | 130 |
| 0.6 | 1.75 | 5.05 | 4.83 | 4.25 | 3.61 | 3.3 | 2.89 | 2.65 | 2.35 | 1.97 | 0 | 0 | 0 | 0 | 0 | ≥75 |

Dimensional drawings



Values specified in this data sheet are tested at (unless otherwise stated):

- Room temperature (20°C [68°F] ± 3°C [5.5°F]).
- Standard atmosphere (101.3 [29.9 inHg] ± 1.0 kPa [0.3 inHg]).

- Compressed air quality, DIN ISO 8573-1 class 4.

Accessories

0111976 | Silencer COAX® MIDI

Spare parts

0109531 | Spare part kit Midi COAX

0124897 | Spare part kit Midi COAX Viton

0107130 | Cartridge holder Midi-2 cpl.