

COAX® cartridge MIDI Pi48-3, sealings in Viton®

Article number: 0117286



- Three-stage COAX® cartridge - MIDI - with high initial vacuum flow.
- Vacuum level to 90 -kPa at low feed pressure.
- High system reliability in case of fluctuating or low feed pressure.
- Suitable for fast evacuation of large volumes in sealed systems.
- Efficient generator of blow-air. Recommended for overpressures between 0.05 and 0.14 MPa.

Technical data

| Description | Unit | Value |
|---------------------|------|--------------------------------|
| Material | - | Al, FKM, Nitrile (NBR), PA, SS |
| Temperature, max. | °C | 80 |
| Temperature, min. | °C | -10 |
| Weight, max. | g | 70 |
| Weight, min. | g | 33 |
| Feed pressure, max. | MPa | 0.7 |

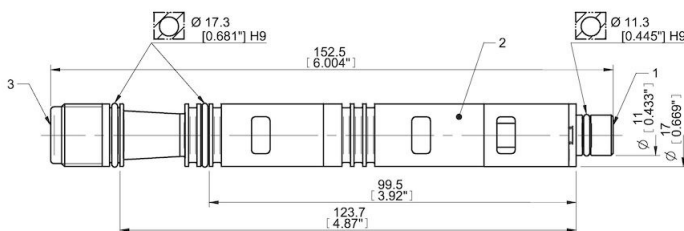
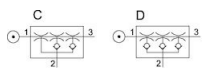
Performance

| Feed pressure MPa | Air consumption Nl/s | Vacuum flow (Nl/s) at different vacuum levels (-kPa) | | | | | | | | | | | | Max vacuum kPa | | |
|----------------------|-------------------------|--|-----|-----|-----|------|------|------|------|----|------|----|----|-------------------|----|-----|
| | | 0 | 10 | 20 | 30 | 40 | 50 | 60 | 70 | 75 | 80 | 90 | 95 | | 99 | |
| 0.17 | 1.37 | 4 | 1.7 | 1.2 | 0.7 | 0.4 | 0.12 | 0 | 0 | 0 | 0 | 0 | 0 | 0 | 0 | ≥55 |
| 0.22 | 1.62 | 5 | 2 | 1.5 | 0.9 | 0.55 | 0.45 | 0.26 | 0.07 | 0 | 0 | 0 | 0 | 0 | 0 | ≥73 |
| 0.31 | 2.05 | 5.6 | 2.5 | 1.8 | 1.1 | 0.65 | 0.5 | 0.35 | 0.25 | 0 | 0.1 | 0 | 0 | 0 | 0 | ≥90 |
| 0.4 | 2.54 | 5.7 | 2.5 | 2.1 | 1.5 | 1.1 | 0.66 | 0.36 | 0.26 | 0 | 0.08 | 0 | 0 | 0 | 0 | ≥86 |

| Feed pressure MPa | Air consumption Nl/s | Evacuation time (s/l) to reach different vacuum levels (-kPa) | | | | | | | | | | | | | Max vacuum kPa | | |
|----------------------|-------------------------|---|-------|------|------|------|------|-----|-----|-----|----|----|------|-------|-------------------|---|-----|
| | | 10 | 20 | 30 | 40 | 50 | 60 | 70 | 80 | 90 | 95 | 99 | 99.5 | 100.3 | | | |
| 0.17 | 1.37 | 0.03 | 0.1 | 0.2 | 0.4 | 1 | 0 | 0 | 0 | 0 | 0 | 0 | 0 | 0 | 0 | 0 | ≥55 |
| 0.22 | 1.62 | 0.025 | 0.08 | 0.17 | 0.3 | 0.5 | 0.8 | 1.7 | 0 | 0 | 0 | 0 | 0 | 0 | 0 | 0 | ≥73 |
| 0.31 | 2.05 | 0.02 | 0.06 | 0.12 | 0.25 | 0.45 | 0.7 | 1 | 1.6 | 4 | 0 | 0 | 0 | 0 | 0 | 0 | ≥90 |
| 0.4 | 2.54 | 0.02 | 0.055 | 0.11 | 0.18 | 0.29 | 0.59 | 0.9 | 1.7 | 4.5 | 0 | 0 | 0 | 0 | 0 | 0 | ≥86 |

| Feed pressure MPa | Air consumption Nl/s | Blow flow (Nl/s) at different pressure levels (-kPa) | | | | | | | | | | | | | Max pressure kPa | | |
|----------------------|-------------------------|--|----|-----|------|----|------|-----|-----|-----|-----|-----|-----|-----|---------------------|-----|-----|
| | | 0 | 10 | 20 | 30 | 40 | 50 | 60 | 70 | 80 | 90 | 100 | 110 | 120 | | 130 | 140 |
| 0.6 | 3.5 | 9.5 | 8 | 6.5 | 6.25 | 6 | 5.65 | 5.3 | 4.7 | 4.6 | 4.6 | 4.6 | 4.5 | 4.3 | 4 | 3.7 | ≥0 |

Dimensional drawings



Values specified in this data sheet are tested at (unless otherwise stated):

- Room temperature (20°C [68°F] ± 3°C [5.5°F]).

- Standard atmosphere (101.3 [29.9 inHg] ± 1.0 kPa [0.3 inHg]).
- Compressed air quality, DIN ISO 8573-1 class 4.

Accessories

0111976 | Silencer COAX® MIDI

Spare parts

0124897 | Spare part kit Midi COAX Viton

0107131 | Cartridge holder Midi-3 cpl.