



ALUMINUM CHAIN BLOCK OPERATION INSTRUCTION

Please read the manual carefully before use



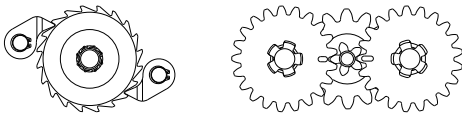
TOHO CHAIN BLOCK & RIGGING MFG. CO., LTD.

Application

With compacted design and enclosed body, this hoist is made of Aluminum, has very light weight, easy to carry and widely be used in home, factory, filed construction, agriculture, warehouse and so on for lifting and small equipment installation purpose. It is also widely used in chemically industry and marine industry where anti-corrosion property required.

Features and Advantages

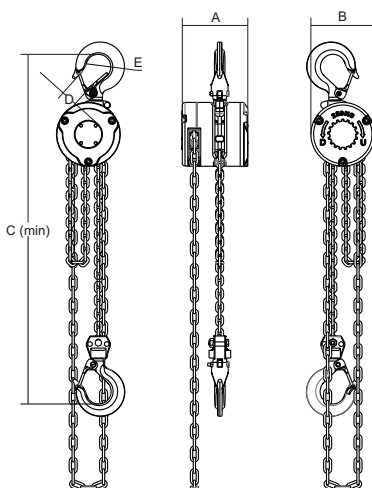
- 1.Compacted design, light weight, easy to carry.
- 2.Made of Aluminum alloy, safe and reliable with strong metallic visual sense.
- 3.Two-stage carburizing and quenching gear, high mechanical transmission efficiency and durability
- 4.Double pawl brake system providing more safety
- 5.Special heat treated flexible hook, can be stretched, but will never break
- 6.Galvanized load chain and hand chain with high brightness.

**Precaution**

- 1.Do not pull chain inclinedly
- 2.Do not operate hoist over the rated load
- 3.Do not pull hoist other than manpower
- 4.Before use, check hoist and be sure no damage, gears and load chain are well lubricated, no load operation works well.
- 5.Before lift, check and be sure the hoist has been well hooked and connected with the object to move, hook latch be well closed, chain is vertical, no twisted link, no kinked links
- 6.Operator should stand on hand wheel side, pull the chain to rotate wheel clockwise for lift purpose. Change the direction to down loads slowly
- 7.Never lift people or load over people to avoid personal injury
- 8.Pull the chain uniform and gentle, do not give too much force to avoid chain link jump or block
- 9.Stop operation if pulling effort is much larger than rated force to avoid inside structure damage that may lead to loads falling
- 10.Detach hoist hook only when loads down to floor safely
- 11.After use, handle hoist gently, lubricated and keep in dry, ventilate area

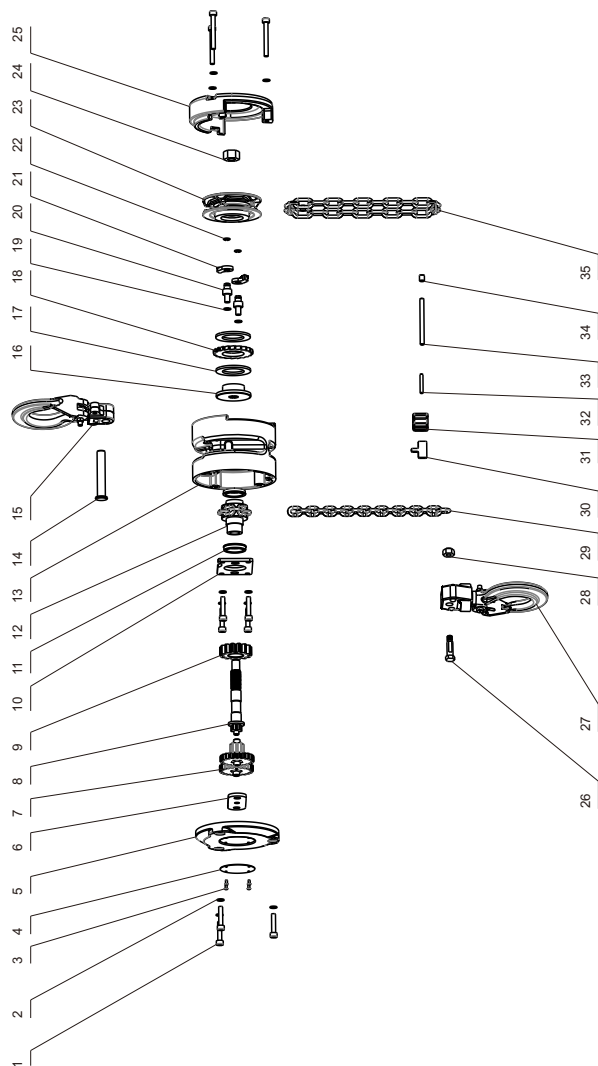
Maintenance

1. Clean hoist after each use, keep in dry area to avoid rust and corrosion
2. Properly clean and lubricate the gear and bearing according to the usage frequency
3. When assembly hoist, be sure the "0" mark on small gears well aligned and on same line
4. When assembly brake system, be sure the ratchet gear teeth well engaged with pawl spring tip. Pawl spring can control pawl sensitively. After put on hand wheel, rotate wheel clockwise and press ratchet gear and brake pad tightly on the brake disc. Rotate the hand wheel anticlockwise, there should be small gap between wheel, ratchet gear and brake pad.
5. Never disassemble hoist by unqualified person
6. After each clean and maintenance, the hoist should be tested under no load and under rated load for any new operation purpose.
7. During lubrication or operation, the brake disc should keep clean and check frequently to be sure the brake system works well

Data sheet


Model		HSZ-0.25	HSZ-0.50
Capacity	t	0.25	0.5
Standard lift	m	2.5	2.5
Running test load	kN	3.75	7.5
Effort required to lift rated load	N	160	200
Diameter of load chain	mm	3.2	4
Strands of load chain		1	1
Dimensions (mm)	A	87	98
	B	84	103
	C	245	285
	D	21	23
	E	32	35
Net weight	kg	2.14	3.85
Extra weight per metre of Extra lift	kg	0.62	0.75

Explosion View



Part List

Code	Parts Description	Quantity
1	Stainless steel bolt	10
2	Spring Washer	10
3	Rivet	4
4	Nameplate	1
5	Gear Side Cover	1
6	Short axis seat	1
7	Small gear	2
8	Main axis	1
9	large gear	1
10	Side plate	1
11	Bearing seat	2
12	Load chain pocket	1
13	Cover	1
14	Upper hook pin	1
15	Upper hook holder	1
16	Brake hub	1
17	Small gear	1
18	Ratchet gear	1
19	Spring washer	2
20	Pawl pin	2
21	Pawl	2
22	Axial retaining ring	2
23	Hand chain wheel	1
24	Main axis nut	1
25	Hand chain side cover	1
26	Bottom hook pin	1
27	Bottom hook holder	1
28	Hook pin nut	1
29	Load chain	1
30	Stripper	1
31	Chain Stop	1
32	Chain Stop Pin	1
33	Chain stop pin	1
34	Plug	1
35	Hand chain	1

MAINTENANCE NOTES

TCHD