

ELECMAT SBR NR



TECHNICAL MATTING / ELECTRICAL INSULATION

FEATURES

Fine or wide grooved or checkered pattern.

REGULATIONS

‡ The material is in compliance with EN-60243-1.

APPLICATIONS

Prevention of electric shock risk around high voltage electrical equipment, such as fuse boxes, control panels, switchgear and heavy machinery.

ADVANTAGES

- ‡ Electric insulation
- ‡ Noise, vibration, and cold propagation reduction
- ‡ Non-slippery
- ‡ Acoustic insulation
- ‡ Excellent walking and standing comfort

BENEFITS

- ‡ Safety
- ‡ Comfort
- ‡ Service life

MECHANICAL, PHYSICAL AND CHEMICAL PROPERTIES

Measured characteristics	Standard	Value	
MECHANICAL			
Rubber compound		SBR NR	
Hardness	ASTM D2240	70 ±5	Shore A
Abrasion resistance (5N)	ISO 4649	≤180	mm ³
Residual indentation	EN ISO 24343	≤0.15	mm
Dimensional stability	EN ISO 23999	±0.3	%
Sound insulation	ISO 10140-3	12	dB

CHEMICAL RESISTANCE

Common cleaning products	EN 423	Good
--------------------------	--------	------

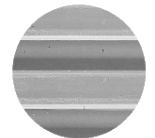
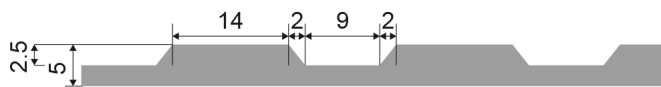
PROFILE



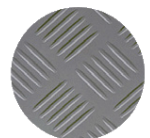
PATTERN



Fine triangular ribbed (MT)



Wide ribbed M39 (MG)




Checker (MK)

IDENTIFICATION

Branding	Fine ribbed: without branding or branded 30KV or 50KV following IEC 60243-1. Wide ribbed: without branding. Checker: branded 30KV following IEC 60243-1.
Back face	Fabric impression.
Packaging	Rolled on cardboard tube Ø 80mm.
Wrapping	Black polyethylene film.
Labelling	Self-adhesive label indicating product name, dimensions, area in m ² , nominal weight, and product code to allow product traceability.

Unless typographical error, information and figures of our technical datasheet are based on our experience and laboratory tests according to international standards. This data is intended to be used as a guideline only. Material performance depends on the conditions of use and the final application.

SBR NR		TECHNICAL MATTING / ELECTRICAL INSULATION		ELECMAT			
COLOR	THICKNESS mm	WIDTH mm	LENGTH m	WEIGHT kg/m ²	PATTERN	DIELECTRIC STRENGTH	
GREY	3±0.3	1400±2%	10±2%	4.08	MK	30KV	
GREY	3±0.3	1200±2%	10±2%	3.8	MT	30KV	
GREY	3±0.3	1000±2%	10±2%	3.73	MT	30KV	
GREY	4.5±0.4	1200±2%	10±2%	5.7	MT	50KV	
GREY	4.5±0.4	1000±2%	10±2%	6.16	MT	50KV	
GREY	5±0.4	1200±2%	10±2%	6.08	MG	50KV	

Depending on the manufacturing process there could be differences in some tonalities of the roll colours. Colours of the sample kits and catalogues have to be considered as indicative.

