

TEGUFLEX® P GREEN



PROCESSING EQUIPMENT

EXPANSION JOINT MOULDED



APPLICATIONS

Strong and/or concentrated acids, compressed air containing oil, aerosols, etc. with an excellent resistance to outdoor use

ADVANTAGES

Compensate thermal elongation
Isolate vibrations and absorb pressure surges
Correct misalignments

FLANGES

Turnable flanges in zinc plated carbon steel S235JR
Other material: stainless steel 316, hot-dip galvanized, EPOXY painting, etc.
EN 1092 PN6/10/16 - ASME B16.5 150lbs. Other types on request.

COMPLEMENTARY INFORMATION

BL = 130 mm
Inner liner PTFE, vacuum ring (316Ti), flameguards, PTFE safety shields on request.

Type Approval: ABS
PED (2014/68/EU)

TECHNICAL DESCRIPTION

Inner tube: CSM, black, fluted.

Reinforcement: Nylon cord

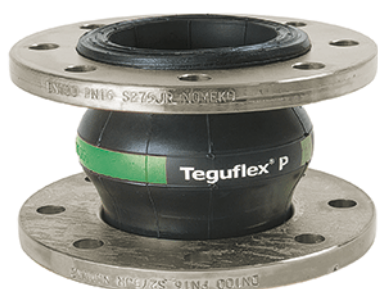
Cover: CR (chloroprene), black, smooth, oil and weather resistant.

Temperature range: -25°C => 90°C.
Max 90°C at max WP 10 bar // Max WP 16 bar at max T° 70°C

STANDARD/APPROVAL

ABS

ABS



LABELING



TRELLEBORG IZARRA IZARRA - ALAVA - SPAIN Batch number - Working Pressure - Testing Pressure - T
MAX/MIN - DN - Month/Year

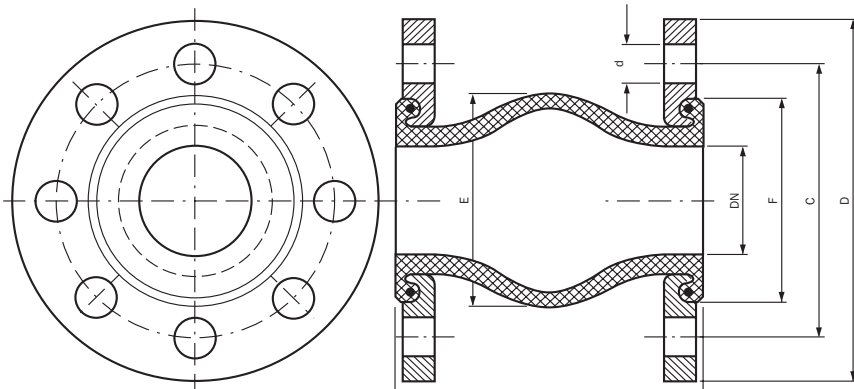
TEGUFLEX® P GREEN

DIMENSIONS & MOVEMENTS

DN	BL	Eff. cross-sectional area Q	(E)	(F)	Permissible movements				Max. vacuum		Weight		Spring rates		
					Compression	Elongation	Lateral	Angular	Without support ring	With support ring	With flanges	With tie-rod flanges	Compression stiffness	Elongation stiffness	Lateral stiffness
mm	mm	cm ²	mm	mm	mm	mm	mm	°	bar	bar	kg	kg	kg/cm	kg/cm	kg/cm
25/32	130	35	77	72	30	20	20	35°	0.8	1.0	2.8	4.5	50	75	50
40	130	50	85	80	30	20	20	35°	0.8	1.0	3.3	4.8	50	75	50
50	130	74	95	90	30	20	20	35°	0.7	1.0	3.7	5.0	50	75	50
65	130	87	110	105	30	20	20	30°	0.6	1.0	4.8	6.4	50	75	50
80	130	120	125	120	30	20	20	30°	0.5	1.0	5.3	7.5	50	75	50
100	130	143	145	140	30	20	20	25°	0.5	1.0	6.2	9.0	65	85	65
125	130	210	170	165	30	20	20	25°	0.4	1.0	8.2	11.2	65	85	65
150	130	283	195	190	30	20	20	15°	0.3	1.0	11.2	13.4	75	100	75
200	130	525	245	240	30	20	20	15°	0.3	1.0	16.8	19.4	75	100	75
250	130	636	295	290	30	20	20	10°	0.2	1.0	21.6	25.4	100	150	100
300	130	897	345	340	30	20	20	10°	0.2	1.0	30.1	33.1	100	150	100

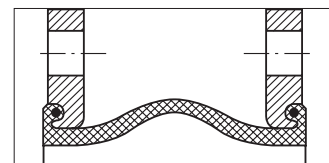
Note: Maximum values do not apply simultaneously. Stiffness values tolerance: +/- 20%.

Unless typographical error, information and figures of our technical datasheet are based on our experience and laboratory tests according to international standards. This data is intended to be used as a guideline only. Material performance depends on the conditions of use and the final application.



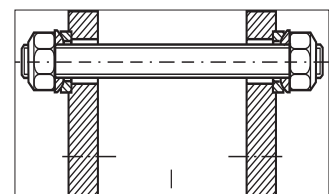
U Type

Standard unit for axial, lateral and angular movements.



L Type

Unit with tie bars for lateral movements.



TRELLEBORG

www.trelleborg.com/fluidhandling