



# **AXON LED Inset Omnidirectional Protected Dome Lights – 8-inch and 12-inch**

**Taxiway Edge, L-852T(L); Medium Intensity Runway Edge and  
Approach; Apron Aircraft Maneuvering; Taxiway  
Intersection, L-852E(L)**

## **User Manual**

**UM-5091, Rev. 1.2.0, 2026-Mar-05**

**ADB**   
**SAFEGATE**



## A.0 Disclaimer / Standard Warranty

### CE certification

The equipment listed as CE certified means that the product complies with the essential requirements concerning safety and hygiene. The European directives that have been taken into consideration in the design are available on written request to ADB SAFEGATE.

### ETL certification

The equipment listed as ETL certified means that the product complies with the essential requirements concerning safety and C22.2 No.180:13 (R2018) regulations. The CSA directives that have been taken into consideration in the design are available on written request to ADB SAFEGATE.

### All Products Guarantee

ADB SAFEGATE will correct by repair or replacement per the applicable guarantee below, at its option, equipment or parts which fail because of mechanical, electrical or physical defects, provided that the goods have been properly handled and stored prior to installation, properly installed and properly operated after installation, and provided further that Buyer gives ADB SAFEGATE written notice of such defects after delivery of the goods to Buyer. Refer to the Safety section for more information on Material Handling Precautions and Storage precautions that must be followed.

ADB SAFEGATE reserves the right to examine goods upon which a claim is made. Said goods must be presented in the same condition as when the defect therein was discovered. ADB SAFEGATE further reserves the right to require the return of such goods to establish any claim.

ADB SAFEGATE's obligation under this guarantee is limited to making repair or replacement within a reasonable time after receipt of such written notice and does not include any other costs such as the cost of removal of defective part, installation of repaired product, labor or consequential damages of any kind, the exclusive remedy being to require such new parts to be furnished.

ADB SAFEGATE's liability under no circumstances will exceed the contract price of goods claimed to be defective. Any returns under this guarantee are to be on a transportation charges prepaid basis. For products not manufactured by, but sold by ADB SAFEGATE, warranty is limited to that extended by the original manufacturer. This is ADB SAFEGATE's sole guarantee and warranty with respect to the goods; there are no express warranties or warranties of fitness for any particular purpose or any implied warranties of fitness for any particular purpose or any implied warranties other than those made expressly herein. All such warranties being expressly disclaimed.

### Standard Products Guarantee

Products manufactured by ADB SAFEGATE are guaranteed against mechanical, electrical, and physical defects (excluding lamps) which may occur during proper and normal use for a period of two years from the date of ex-works delivery, and are guaranteed to be merchantable and fit for the ordinary purposes for which such products are made.



### Note

See your applicable sales agreement for a complete warranty description.

Replaced or repaired equipment under warranty falls into the warranty of the original delivery. No new warranty period is started for these replaced or repaired products.

### FAA Certified products manufactured by ADB SAFEGATE

ADB SAFEGATE L858 Airfield Guidance Signs are warranted against mechanical and physical defects in design or manufacture for a period of 2 years from date of installation, per FAA AC 150/5345-44 (applicable edition).

ADB SAFEGATE LED products (with the exception of obstruction lighting) are warranted against electrical defects in design or manufacture of the LED or LED specific circuitry for a period of 4 years from date of installation, per FAA EB67 (applicable edition). These FAA certified constant current (series) powered LED products must be installed, interfaced and powered with and through products certified under the FAA Airfield Lighting Equipment Program (ALECP) to be included in this 4 (four) year warranty. This includes, but is not limited to, interface with products such as Base Cans, Isolation Transformers, Connectors, Wiring, and Constant Current Regulators.



## Note

See your sales order contract for a complete warranty description.

Replaced or repaired equipment under warranty falls into the warranty of the original delivery. No new warranty period is started for these replaced or repaired products.

---

## Liability



### WARNING

Use of the equipment in ways other than described in the catalog leaflet and the manual may result in personal injury, death, or property and equipment damage. Use this equipment only as described in the manual.

ADB SAFEGATE cannot be held responsible for injuries or damages resulting from non-standard, unintended uses of its equipment. The equipment is designed and intended only for the purpose described in the manual. Uses not described in the manual are considered unintended uses and may result in serious personal injury, death or property damage.

Unintended uses, includes the following actions:

- Making changes to equipment that have not been recommended or described in this manual or using parts that are not genuine ADB SAFEGATE replacement parts or accessories.
- Failing to make sure that auxiliary equipment complies with approval agency requirements, local codes, and all applicable safety standards if not in contradiction with the general rules.
- Using materials or auxiliary equipment that are inappropriate or incompatible with your ADB SAFEGATE equipment.
- Allowing unskilled personnel to perform any task on or with the equipment.

## Copyright Statement

This manual or parts thereof may not be reproduced, stored in a retrieval system, or transmitted, in any form or by any means, electronic, mechanical, photocopying, recording, nor otherwise, without the author's prior written consent.

This manual could contain technical inaccuracies or typographical errors. The author reserves the right to revise this manual from time to time in the contents thereof without obligation of the author to notify any person of such revision or change. Details and values given in this manual are average values and have been compiled with care. They are not binding, however, and the author disclaims any liability for damages or detriments suffered as a result of reliance on the information given herein or the use of products, processes or equipment to which this manual refers. No warranty is made that the use of the information or of the products, processes or equipment to which this manual refers will not infringe any third party's patents or rights. The information given does not release the buyer from making their own experiments and tests.

# Table of Contents

<b>1.0 Safety</b> .....	<b>1</b>
1.1 Safety Messages.....	1
1.1.1 Introduction to Safety.....	2
1.1.2 Intended Use.....	2
1.1.3 Material Handling Precautions : Storage.....	3
1.1.4 Operation Safety.....	3
1.1.5 Maintenance Safety.....	3
1.1.6 Material Handling Precautions: Fasteners.....	4
1.1.7 Material Handling Precautions, ESD.....	4
<b>2.0 About this Manual</b> .....	<b>5</b>
2.1 How to work with the Manual.....	5
2.2 Abbreviations and Terms.....	6
<b>3.0 Introduction</b> .....	<b>7</b>
3.1 Product Information.....	8
3.2 Dimensions and Weight.....	12
<b>4.0 Preparing for Installation</b> .....	<b>13</b>
4.1 Safety Considerations.....	13
4.2 Photobiological safety.....	13
4.3 Inspect on Delivery.....	13
4.4 Unpack the Unit.....	14
4.5 Verify Input Requirements and Equipment Needed.....	14
<b>5.0 Installation</b> .....	<b>15</b>
5.1 Types of Bases.....	15
5.2 Installing Fixture into a Class 1 Direct-Mounted Base.....	18
5.3 EQ Configuration – ILCMS Remote and Sensor.....	20
<b>6.0 Maintenance</b> .....	<b>21</b>
6.1 Basic Maintenance Program.....	21
6.2 Recommended Maintenance Program.....	22
6.2.1 Preventive Maintenance and Regular Inspections.....	23
6.2.2 Inspection Intervals.....	24
6.2.3 Prism Cleaning.....	26
<b>7.0 Workshop Maintenance</b> .....	<b>29</b>
7.1 Open the Light Fixture and Disconnect the Bottom Pan from the Top Cover.....	30
7.2 Replace the Bottom Pan Assembly.....	32
7.3 Replace the Top Cover Assembly.....	32
7.4 Reset the Fail-Open Converter.....	33
7.5 Replace the Secondary Cable – SJO Cord Set.....	35
7.6 Replace the Secondary Cable – Style-6 and French 3-pin Cord Set.....	41
7.7 Replace the Light Engine Assembly.....	47
7.8 Replace the Prism and its Gasket.....	49
7.9 Connect the Bottom Pan to the Top Cover and Close the Light Fixture.....	51
7.10 Test the Light Fixture for Leaks (Water-Tightness).....	52
<b>8.0 Ordering Codes</b> .....	<b>55</b>
8.1 L-852T(L) LED Taxiway Edge.....	55
8.2 Protected Runway Edge, Medium Intensity.....	56
8.3 Protected Apron Maneuvering Guidance.....	57
8.4 L-852E(L) Taxiway Intersection.....	58
<b>9.0 Spare Parts</b> .....	<b>59</b>
9.1 Exploded View.....	59
9.2 L-852T(L) Taxiway Edge, 12-inch and 8-inch.....	61
9.3 Protected Runway Edge, Medium Intensity, 8-inch.....	63
9.4 Protected Apron Maneuvering Guidance, 8-inch.....	64
9.5 L-852E(L) Taxiway Intersection, 12-inch and 8-inch.....	66
<b>10.0 POWER TABLES</b> .....	<b>69</b>

<b>A.0 Cable Loss</b> .....	<b>71</b>
<b>B.0 INTEROPERABILITY – 12-inch and 8-inch</b> .....	<b>73</b>
<b>C.0 Snow Plowing Guidelines</b> .....	<b>77</b>
<b>D.0 Support</b> .....	<b>81</b>
D.1 ADB SAFEGATE Website .....	82
D.2 Recycling.....	83
D.2.1 Local Authority Recycling.....	83
D.2.2 ADB SAFEGATE Recycling.....	83

# List of Figures

Figure 1: Fixture Dimensions .....	12
Figure 2: Anti-vibration washer .....	17
Figure 3: Maintenance cost graph.....	23
Figure 4: Visual inspection matrix.....	24
Figure 5: High-pressure water jet precautions.....	27
Figure 6: Fixation screws .....	30
Figure 7: Pressure release screw.....	31
Figure 8: Gasket (o-ring) .....	31
Figure 9: 1-connector converter (2 fuse resistors).....	33
Figure 10: 1-connector converter (2 fuse resistors) .....	33
Figure 11: 1-connector converter (2 fuse resistors) .....	34
Figure 12: SJO cord set.....	35
Figure 13: Insert tool .....	35
Figure 14: Releasing/locking secondary wires with insert tool .....	35
Figure 15: Wire tie and nylon hex nut .....	36
Figure 16: Cord set retainer disc and bolt (SJO jacketed cable).....	36
Figure 17: Cable clamp, bolt, washer and lock washer .....	37
Figure 18: Cable gland gasket.....	37
Figure 19: Cord set retainer disc and bolt (SJO jacketed cable).....	38
Figure 20: Installation of secondary cable .....	38
Figure 21: Wire tie and nylon hex nut .....	39
Figure 22: Cord set retainer disc and bolt (SJO jacketed cable).....	39
Figure 23: Cable clamp, bolt, washer and lock washer .....	40
Figure 24: Releasing/locking secondary wires with insert tool .....	40
Figure 25: Style 6 cord set .....	41
Figure 26: Insert tool .....	41
Figure 27: Releasing/locking secondary wires with insert tool .....	41
Figure 28: Wire tie and nylon hex nut .....	42
Figure 29: Cord set retainer disc and bolt .....	42
Figure 30: Ground wire, bolt and washer .....	43
Figure 31: Cable gland gasket.....	43
Figure 32: Cord set retainer disc and bolt.....	44
Figure 33: Installation of secondary cable .....	44
Figure 34: Wire tie and nylon hex nut .....	45
Figure 35: Cord set retainer disc and bolt .....	45
Figure 36: Ground wire, bolt and washer .....	46
Figure 37: Releasing/locking secondary wires with insert tool .....	46
Figure 38: Light engine assembly.....	47
Figure 39: Mounted light engine .....	48
Figure 40: Mounting sequence .....	48
Figure 41: Prism, gasket and Teflon protective plate .....	49
Figure 42: Gasket (o-ring) .....	51
Figure 43: Star pattern.....	51
Figure 44: Pressure test fitting tool.....	52
Figure 45: Pressure release screw .....	52
Figure 46: Pressure test fitting tool.....	53
Figure 47: Omnidirectional Light, 4 prisms, 8-inch.....	59
Figure 48: Omnidirectional Light, 4 prisms, 12-inch.....	60
Figure 49: Omnidirectional Light, 4 prisms, 8-inch.....	60

Figure 50: Shallow bases .....	75
Figure 51: Well-aligned plastic cutting edge .....	78
Figure 52: Signs of wear on plastic cutting edge.....	78
Figure 53: Cutting edge without clearance .....	78
Figure 54: Snow plow with support wheels .....	79

## List of Tables

Table 1: Cross section – 12-inch – 8-inch .....	15
Table 2: Torque pattern.....	18
Table 3: Maintenance tasks.....	21
Table 4: Legend Exploded View .....	59
Table 5: Exploded View, Omnidirectional Light, 4 prisms, 12-inch .....	60
Table 6: Exploded View, Omnidirectional Light, 4 prisms, 8-inch.....	60
Table 7: Interoperability matrix – 12-inch .....	73
Table 8: Interoperability matrix – 8-inch .....	74

# 1.0 Safety

## Introduction to Safety







This section contains general safety instructions for installing and using ADB SAFEGATE equipment. Some safety instructions may not apply to the equipment in this manual. Task- and equipment-specific warnings are included in other sections of this manual where appropriate.

## 1.1 Safety Messages


### HAZARD Icons used in this manual

For all HAZARD symbols in use, see the Safety section. All symbols must comply with ISO and ANSI standards.

Carefully read and observe all safety instructions in this manual, which alert you to safety hazards and conditions that may result in personal injury, death or property and equipment damage and are accompanied by the symbols shown below.

	<p>WARNING Failure to observe a warning may result in personal injury, death or equipment damage.</p>
	<p>DANGER – Risk of electrical shock or ARC FLASH Disconnect equipment from line voltage. Failure to observe this warning may result in personal injury, death, or equipment damage. ARC Flash may cause blindness, severe burns or death.</p>
	<p>WARNING – Wear personal protective equipment Failure to observe may result in serious injury.</p>
	<p>WARNING – Do not touch Failure to observe this warning may result in personal injury, death, or equipment damage.</p>
	<p>CAUTION Failure to observe a caution may result in equipment damage.</p>
	<p>ELECTROSTATIC SENSITIVE DEVICES This equipment may contain electrostatic devices.</p>

### Qualified Personnel

	<p><b>Important Information</b> The term <b>qualified personnel</b> is defined here as individuals who thoroughly understand the equipment and its safe operation, maintenance and repair. Qualified personnel are physically capable of performing the required tasks, familiar with all relevant safety rules and regulations and have been trained to safely install, operate, maintain and repair the equipment. It is the responsibility of the company operating this equipment to ensure that its personnel meet these requirements.  Always use required personal protective equipment (PPE) and follow safe electrical work practice.</p>
---	--

## 1.1.1 Introduction to Safety



### CAUTION

#### Unsafe Equipment Use

This equipment may contain electrostatic devices, hazardous voltages and sharp edges on components

- Read installation instructions in their entirety before starting installation.
- Become familiar with the general safety instructions in this section of the manual before installing, operating, maintaining or repairing this equipment.
- Read and carefully follow the instructions throughout this manual for performing specific tasks and working with specific equipment.
- Make this manual available to personnel installing, operating, maintaining or repairing this equipment.
- Follow all applicable safety procedures required by your company, industry standards and government or other regulatory agencies.
- Install all electrical connections to local code.
- Use only electrical wire of sufficient gauge and insulation to handle the rated current demand. All wiring must meet local codes.
- Route electrical wiring along a protected path. Make sure they will not be damaged by moving equipment.
- Protect components from damage, wear, and harsh environment conditions.
- Allow ample room for maintenance, panel accessibility, and cover removal.
- Protect equipment with safety devices as specified by applicable safety regulations
- If safety devices must be removed for installation, install them immediately after the work is completed and check them for proper functioning prior to returning power to the circuit.

**Failure to follow these instructions can result in serious injury, death or equipment damage**

## Additional Reference Materials



#### Important Information

- IEC – International Standards and Conformity Assessment for all electrical, electronic and related technologies.
- IEC 60364 – Electrical Installations in Buildings.
- CSA – C22.2 No.180:13 (R2018), series isolating transformers for airport lighting.
- FAA Advisory: AC 150/5340-26 (current edition), Maintenance of Airport Visual Aid Facilities.
- Maintenance personnel must refer to the maintenance procedure described in the ICAO Airport Services Manual, Part 9.
- ANSI/NFPA 79, Electrical Standards for Metalworking Machine Tools.
- National and local electrical codes and standards.

## 1.1.2 Intended Use



### CAUTION

#### Use this equipment as intended by the manufacturer

This equipment is designed to perform a specific function, do not use this equipment for other purposes

- Using this equipment in ways other than described in this manual may result in personal injury, death or property and equipment damage. Use this equipment only as described in this manual.

**Failure to follow this instruction can result in serious injury or equipment damage**

### 1.1.3 Material Handling Precautions : Storage



#### CAUTION

##### Improper Storage

Store this equipment properly

- If equipment is to be stored prior to installation, it must be protected from the weather and kept free of condensation and dust.

**Failure to follow this instruction can result in equipment damage**

### 1.1.4 Operation Safety



#### CAUTION

##### Improper Operation

Do Not Operate this equipment other than as specified by the manufacturer

- Only qualified personnel, physically capable of operating the equipment and with no impairments in their judgment or reaction times, should operate this equipment.
- Read all system component manuals before operating this equipment. A thorough understanding of system components and their operation will help you operate the system safely and efficiently.
- Before starting this equipment, check all safety interlocks, fire-detection systems, and protective devices such as panels and covers. Make sure all devices are fully functional. Do not operate the system if these devices are not working properly. Do not deactivate or bypass automatic safety interlocks or locked-out electrical disconnects or pneumatic valves.
- Protect equipment with safety devices as specified by applicable safety regulations.
- If safety devices must be removed for installation, install them immediately after the work is completed and check them for proper functioning.
- Route electrical wiring along a protected path. Make sure they will not be damaged by moving equipment.
- Never operate equipment with a known malfunction.
- Do not attempt to operate or service electrical equipment if standing water is present.
- Use this equipment only in the environments for which it is rated. Do not operate this equipment in humid, flammable, or explosive environments unless it has been rated for safe operation in these environments.
- Never touch exposed electrical connections on equipment while the power is ON.

**Failure to follow these instructions can result in serious injury, death or equipment damage.**

### 1.1.5 Maintenance Safety



#### DANGER

##### ELECTRIC SHOCK HAZARD

THIS EQUIPMENT MAY CONTAIN ELECTROSTATIC DEVICES

- DO NOT OPERATE A SYSTEM THAT CONTAINS MALFUNCTIONING COMPONENTS. IF A COMPONENT MALFUNCTIONS, TURN THE SYSTEM OFF IMMEDIATELY.
- DISCONNECT AND LOCK OUT ELECTRICAL POWER.
- ALLOW ONLY QUALIFIED PERSONNEL TO MAKE REPAIRS OR REPLACE MALFUNCTIONING COMPONENTS ACCORDING TO INSTRUCTIONS PROVIDED IN MANUAL.

**FAILURE TO FOLLOW THESE INSTRUCTIONS CAN RESULT IN DEATH OR EQUIPMENT DAMAGE**

## 1.1.6 Material Handling Precautions: Fasteners



### DANGER

#### FOREIGN OBJECT DAMAGE - FOD

THIS EQUIPMENT MAY CONTAIN FASTENERS THAT CAN LOOSEN UNLESS TORQUED PROPERLY.

- ONLY USE FASTENERS OF THE SAME TYPE AS ORIGINALLY SUPPLIED WITH THE EQUIPMENT.
- USE OF INCORRECT COMBINATION OF GASKETS, BOLTS AND NUTS CAN CAUSE SEVERE DAMAGE TO THE PRODUCT AND CREATE MULTIPLE SAFETY RISKS .
- YOU NEED TO KNOW WHAT BASE THE LIGHT FIXTURE WILL BE INSTALLED IN, IN ORDER TO CHOOSE THE CORRECT GASKET, BOLTS AND NUTS.
- BOLT TYPE, LENGTH, AND TORQUE VALUE ARE DETERMINED BY TYPE OF BASE, HEIGHT OF SPACERS USED, AND CLAMP FORCE REQUIRED IN FAA ENGINEERING BRIEF NO 83 (LATEST REVISION).
- USE ONLY ANTI-VIBRATION WASHERS WITH THE FIXING BOLTS AS DEFINED IN FAA EB 83 (LATEST EDITION) TO AVOID THE RISK OF LOOSENING BOLTS . DO NOT USE OF ANY OTHER TYPE OF WASHER (SUCH AS SPLIT-LOCK WASHERS). FOR INSTALLATION OTHER THAN FAA, USE THE BASE CAN MANUFACTURER'S RECOMMENDATIONS.
- ALWAYS TIGHTEN THE FASTENERS TO THE RECOMMENDED TORQUE USING A CALIBRATED TORQUE WRENCH.
- APPLY THE RECOMMENDED TYPE OF ADHESIVE AND FOLLOW THE ADHESIVE INSTRUCTIONS CAREFULLY.

**FAILURE TO FOLLOW THESE WARNINGS MAY CAUSE THE FASTENERS TO LOOSEN, POSSIBLY DAMAGING THE EQUIPMENT. THIS CAN LEAD TO THE HIGHLY DANGEROUS SITUATION OF FOD, WITH POTENTIALLY LETHAL CONSEQUENCES.**



### Note

To minimize the risk of errors, the ADB SAFEGATE Sales Representative will have information on which gasket goes with which base. This information is also provided in the product Data sheets, the User Manuals and the Spare Part Lists.

## 1.1.7 Material Handling Precautions, ESD



### CAUTION

#### Electrostatic Sensitive Devices

This equipment may contain electrostatic devices

- Protect from electrostatic discharge.
- Electronic modules and components should be touched only when this is unavoidable e.g. soldering, replacement.
- Before touching any component of the cabinet you shall bring your body to the same potential as the cabinet by touching a conductive earthed part of the cabinet.
- Electronic modules or components must not be brought in contact with highly insulating materials such as plastic sheets, synthetic fiber clothing. They must be laid down on conductive surfaces.
- The tip of the soldering iron must be grounded.
- Electronic modules and components must be stored and transported in conductive packing.

**Failure to follow this instruction can result in equipment damage**

---

## 2.0 About this Manual

This document includes AXON omnidirectional runway inset light fixture information with a focus on safety, installation and maintenance procedures.

For more information, see [www.adbsafegate.com](http://www.adbsafegate.com).

---



### Note

It is very important to read this document before any work is started.

---

This manual covers the following 12-inch and 8-inch light fixtures:

- ICAO and FAA L-852T(L) taxiway edge, 8-inch and 12-inch (TE 4-prism)
- ICAO protected runway edge, medium lintensity, 8-inch (ME)
- ICAO protected apron maneuvering guidance, 8-inch (AM)
- FAA L-852E(L) taxiway intersection, 8-inch and 12-inch (LE)

## 2.1 How to work with the Manual

- Familiarize yourself with the structure and content.
- Carry out the actions completely and in the given sequence.

## 2.2 Abbreviations and Terms

This document may include the abbreviations and terms listed below.

<b>Abbreviation</b>	<b>Description</b>
AGL	Airfield Ground Lighting
ANSI	American National Standards Institute
ATM	Air Traffic Movement
CCR	Constant Current Regulator
EASA	European Union Aviation Safety Agency
FAA	Federal Aviation Administration
ICAO	International Civil Aviation Organization
IEC	International Electrotechnical Committee
IEEE	Institute of Electrical and Electronics Engineers
ILCMS	Individual Light Control and Monitoring System
LED	Light Emitting Diode
NATO	North Atlantic Treaty Organization
OFDM	Orthogonal Frequency Division Multiplexing
PWM	Pulse Width Modulation
STAC	Service Technique de l'Aviation Civile (France)
STANAG	Standardization Agreement (NATO)
UFC	Unified Facilities Criteria

## 3.0 Introduction

### The All-in-One Solution

The AXON omnidirectional range is a 12-inch and 8-inch low-protrusion light-emitting diode (LED) inset light fixture available in different versions:

#### Non-MON

Basic operation, providing power only

#### MON (Fail-open)

Integrated fail-open technology for CCR monitoring compatibility

#### EQ

Integrated Intelligent Light Control and Monitor System (ILCMS) remote capability, utilizing orthogonal frequency-division multiplexing (OFDM) technology for superior communication with the LINC 360 system interface.

### Omnidirectional insets – 12-inch and 8-inch



## 3.1 Product Information

### Compliance and Standards

Compliance	Description	TE	ME	AM	LE
		DS-5024	DS-5102	DS-5103	DS-5104
<b>FAA</b>	AC 150/5345-46 and FAA Engineering Brief No. 67: L-852T(L) ETL certified	X			X
<b>ICAO</b>	Annex 14 Volume 1	X	X	X	
<b>EASA</b>	CS-ADR-DSN	X	X	X	
<b>Australia</b>	MOS 139	X		X	
<b>Canada</b>	TP 312	X		X	
<b>IEC</b>	61827	X	X	X	
<b>NATO</b>	STANAG 3316	X			
<b>US Navy</b>	NAVAIR 5150AAA-2, WP 006-04	X			
<b>US Navy</b>	NAVAIR 5150AAA-2, WP 005-03				X
<b>UFC</b>	3-535-01	X			X
<b>CE</b>		X	X	X	X

## Uses TE

### FAA and UFC

- L-852T(L) taxiway edge

### NAVAIR

- Taxiway edge

### ICAO and MOS

- Intermediate holding position

## Uses ME

### ICAO

- Medium intensity runway edge
- Medium intensity approach

## Uses AM

### ICAO

- Aircraft stand maneuvering guidance

## Uses LE

### FAA and UFC

- L-852E(L) taxiway intersections  $\geq$  1200 RVR

### NAVAIR

- Taxiway intersections

## Features and Benefits

### Efficiency

- EQ has an integrated ILCMS remote for use with the LINC 360 system providing high data capacity and resisting degradation from various types of radio effects to provide a superior communication platform
- Precision aimed optics enhancing photometric performance and complementing extended LED life
- Reduced bottom pan profile allowing for very shallow base can installation
- LED pulse width modulated (PWM) at 400 Hz optimizing LED performance and eliminating perceptible flicker to a moving human observer throughout the range of brightness steps
- Operates at all steps of constant current regulator technologies designed in compliance with IEC or FAA requirements
- Fully dimmable lights, conforming to the dimming curve of traditional halogen lights
- Low protrusion, high-intensity, Style 3 ( $\leq 6.35$  mm) inset light fixtures
- No negative slope in front of the prisms

### Sustainability

- Fully encapsulated all-in-one universal power supplies for Runway, Taxiway, Approach and Omni inset families
- Latest generation LEDs providing a long-lasting light source with high efficiency and low power consumption
- Reinforced top cover substantially exceeding standards to improve durability and longevity (directional beams only)
- One single family of fixtures covering all runway, taxiway and approach applications
- IP68 rated enclosure designed for harsh environments; all fastenings are stainless steel
- Compatible with existing infrastructure allowing for direct replacement of existing LED inset fixtures

### Safety

- Improved mechanical design to strengthen and consolidate components, improving the customer maintenance experience
- Fail-open option for compatibility with legacy monitoring systems and optimization of advanced control and monitoring systems
- Failed LED detection as required by Engineering Brief 67D
- Robust lightning protection complying with ANSI/IEEE C62.41-1991; Location Category C2 as required by FAA Engineering Brief 67 Category C2 is defined as a 1.2/50  $\mu$ S – 8/20  $\mu$ S combination wave, with a peak voltage of 10,000 V and a peak current of 5,000 A

## Power Supply Options

- Non-monitored — power only
- Monitored — integrated fail-open technology
- EQ with integrated ILCMS with OFDM technology for use with LINC 360 system

## Installation and Maintenance

The light fixture can be installed in a 12-inch or an 8-inch base. Gaskets are sold separately. Refer to the user manual INTEROPERABILITY appendix to identify the correct gasket and bolts for your specific base and ensure a reliable fit.

## Operating Conditions

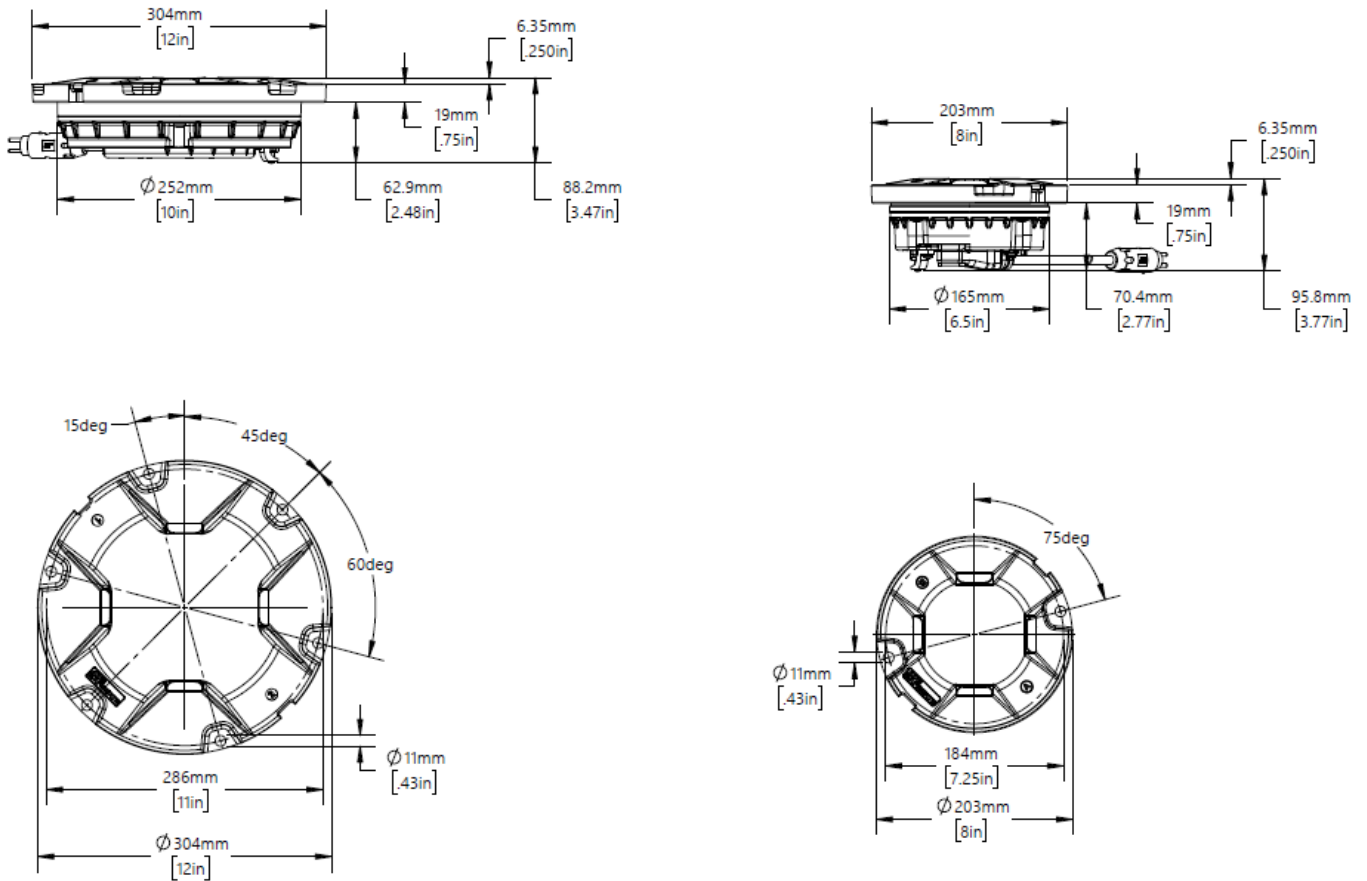
<b>Operating temperature</b>	-55 °C to +55 °C / -67 °F to +131 °F
<b>Storage temperature</b>	-60 °C to +80 °C / -76 °F to +176 °F
<b>Humidity</b>	Up to 100%

### 3.2 Dimensions and Weight

The weight and measurement of the light fixture depends on the version

Version	Weight	Dimension
TE - LE	6.8 kg / 15 lb (12 in)	304 mm / 12 in
TE - LE - ME - AM	3 kg / 6.6 lb (8 in)	203 mm / 8 in

Figure 1: Fixture Dimensions



## 4.0 Preparing for Installation

Effective installation starts with thorough preparation and thoughtful planning. Please review this entire section before proceeding to ensure your process is seamless, safe, and optimized for long-term reliability.

### 4.1 Safety Considerations

- Read the installation section in its entirety before you begin installation.
- Understand the requirements of all system components. This will help you install the system safely and efficiently.
- Refer to FAA AC 150/5340-30 for design and installation details for airport visual aids.
- Use the site plans and specifications for instructions about installing runway and taxiway in-pavement lights.



#### DANGER

FAILURE TO FOLLOW THESE SAFETY PROCEDURES CAN RESULT IN PERSONAL INJURY OR DEATH.

- ALLOW ONLY QUALIFIED PERSONNEL TO INSTALL ADB SAFEGATE AND AUXILIARY EQUIPMENT. USE ONLY APPROVED EQUIPMENT. USING UNAPPROVED EQUIPMENT IN AN APPROVED SYSTEM MAY VOID FAA APPROVALS. OBSERVE AND FOLLOW THE SAFETY INSTRUCTIONS IN THIS DOCUMENT AND ALL OTHER RELATED DOCUMENTATION.
- MAKE SURE ALL EQUIPMENT IS RATED AND APPROVED FOR THE ENVIRONMENT WHERE IT IS BEING USED.
- FOLLOW ALL INSTRUCTIONS FOR INSTALLING COMPONENTS AND ACCESSORIES.
- INSTALL ALL ELECTRICAL CONNECTIONS IN COMPLIANCE WITH LOCAL AND NATIONAL CODES AND REGULATIONS.
- USE ONLY ELECTRICAL WIRE OF SUFFICIENT GAUGE AND INSULATION TO HANDLE THE RATED CURRENT DEMAND. ALL WIRING MUST MEET LOCAL AND NATIONAL CODES.
- ROUTE ELECTRICAL WIRING ALONG A PROTECTED PATH. MAKE SURE IT WILL NOT BE DAMAGED BY MOVING EQUIPMENT.
- PROTECT COMPONENTS FROM DAMAGE, WEAR AND HARSH ENVIRONMENTAL CONDITIONS.
- ALLOW AMPLE CLEARANCE FOR MAINTENANCE, PANEL ACCESSIBILITY AND COVER REMOVAL.
- PROTECT EQUIPMENT WITH SAFETY DEVICES AS SPECIFIED BY APPLICABLE SAFETY REGULATIONS.
- IF SAFETY DEVICES MUST BE REMOVED FOR INSTALLATION, REINSTALL THEM IMMEDIATELY AFTER THE WORK IS COMPLETED AND CHECK THEM FOR PROPER FUNCTIONING.
- THE CORD SET MUST BE PROTECTED PRIOR TO INSTALLATION.

### 4.2 Photobiological safety



#### CAUTION

Photobiological safety conforming with IEC 62471

RISK GROUP 0 or 1: Optical radiation emitted from LED lights may be harmful to the eyes. Do not stare with at the light source with bare eyes at a fixture operating at high intensity. Use protection goggles or similar protection method.

Goggles with a transmission factor not higher than 5% in the 400-530 nm band have been tested and provide adequate protection.

### 4.3 Inspect on Delivery

1. Inspect all packaging for visible damage.
2. If damage is detected on packaging, open the damaged box and inspect its contents for damage.
3. If containing product is damaged, immediately fill a claim form with the carrier.
4. Store the fixture in its original packing in a protected area.

## 4.4 Unpack the Unit

---



### CAUTION

Do not unpack the fixture until it is at the installation site to avoid damage due to transportation and handling.

---

When opening the box, please confirm that the light fixture's specifications — such as type and color — align with the design requirements. If installing a fixture where control and monitoring will be activated at a later stage, make sure to register product information, such as PID/SN and position of the light fixture in, for example, a site documentation table. This information is essential for enabling remote activation and effective administration of control and monitoring from the substation.

## 4.5 Verify Input Requirements and Equipment Needed

The In-pavement light fixture is designed for connection to a 6.6A series lighting circuit via an L-830 (60 Hz) or L-831 (50 Hz) isolation transformer.

Make sure you have the necessary tools and materials ready for installation (not supplied). Also consider other tools that might be needed based on site-specific conditions.

## 5.0 Installation

This section provides instructions on how to install and remove in-pavement light fixtures. **Read the instructions in their entirety before starting installation.** Follow airport project plans and specifications for specific instructions. All work must meet the National Electric Code and local codes.

### Before Installation

- Read and understand [Safety](#) and [Safety Considerations](#).
- For detailed information on compatibility with various bases and recommended torque values, refer to the [INTEROPERABILITY – 12-inch and 8-inch](#) appendix. For bases from other manufacturers, refer to their specifications. Use the correct gasket, bolts, and nuts for the base.



### CAUTION

Use of incorrect combination of gaskets, bolts and nuts can cause severe damage to the product and create multiple safety risks.

## 5.1 Types of Bases

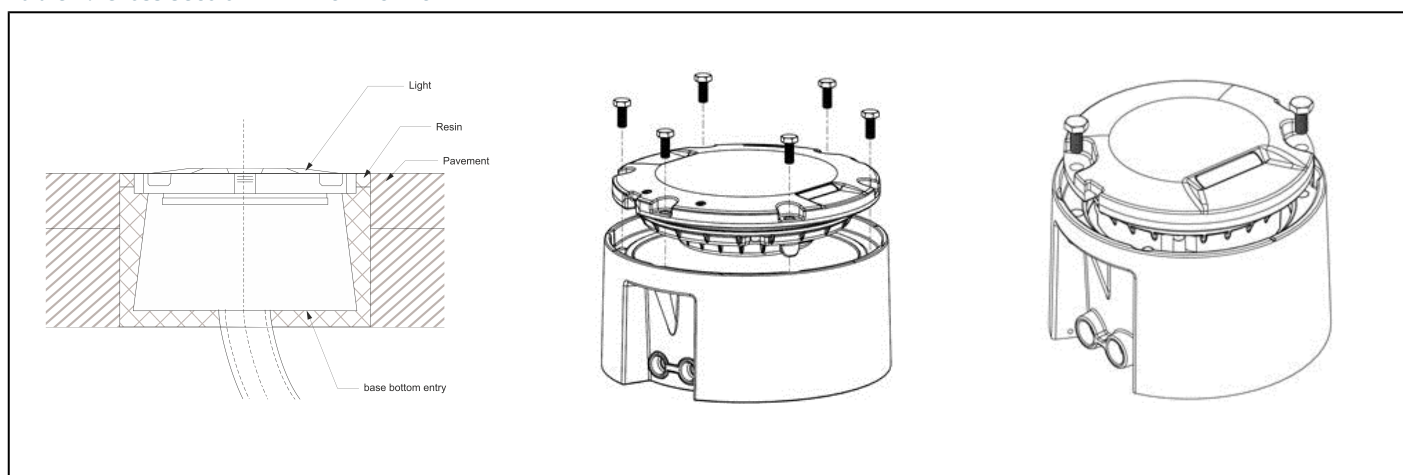


### Note

Install the inset light fixture in a base supplied by ADB SAFEGATE, carefully following the provided instructions. If you need to install the fixture on a different base or adapter ring not supplied by ADB SAFEGATE, please contact us for guidance.

### Shallow Bases – Class 1 Direct Mounted

**Table 1: Cross section – 12-inch – 8-inch**



The 8-inch and 12-inch class 1, direct mounted diameter shallow base is secured in the pavement by means of resin. Correct positioning is obtained with a leveling jig with a sighting telescope. Wires between the light and the series transformer are installed either in saw cuts in the pavement filled with resin or in pipes in the lower concrete layers. Mounting an 8-inch light fixture in a 12-inch diameter base is made possible by means of dedicated adapter rings.



## Anti-Vibration Washer – Installation Requirements

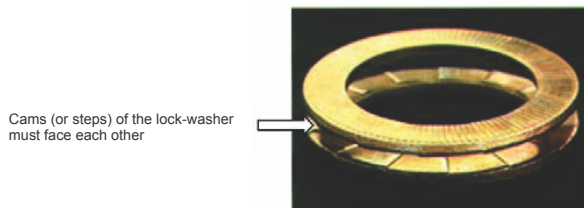
- Use only the specified anti-vibration lock washers, as described in FAA AC 150/5340-30, Chapter 10, and FAA Engineering Brief No. 83 (latest revision).
- Install the lock washer correctly. The cams (or steps) of each half of the lock washer must face each other. See image below.



### CAUTION

Do not use other types of washers, such as split washers. Using the wrong washer type can cause mounting bolts to loosen.

**Figure 2: Anti-vibration washer**



## 5.2 Installing Fixture into a Class 1 Direct-Mounted Base

### Tools Required

The following tools are recommended for installation:

- One Box spanner 16/17 mm
- Torque wrench with a 16/17 mm socket (Do not use an impact wrench)
- Two large flat head screwdrivers to lift edge of fixture to reposition if necessary
- One T20 Torx key
- One brush or cloth
- Optional - air compressor with high pressure nozzle to assure surface is free of debris

### Grounding the Fixture

If grounding the fixture, attach the braided ground strap or wire to the grounding point on the fixture using a ground lug or grounding screw and tighten to 2.5 Nm. The grounding point is marked on the bottom of the fixture.

### Mounting the Fixture in the Base

- Clean all contact surfaces of the light fixture and the base.
- Put the O-ring gasket in the gasket track.



#### Note

For detailed information on compatibility with various bases and recommended torque values, refer to the [INTEROPERABILITY – 12-inch and 8-inch](#) appendix.

- Place the fixture into the base. Make sure the secondary cables are inside the base and not pressed between the light and the base.

### Attaching the Fixture to the Base

Use a torque limiting box spanner (16/17 mm) or calibrated torque wrench to pre-tighten bolts to 5 Nm in the star torque patterns shown below. Continue tightening in the same star pattern until the final recommended torque value is reached. Refer to the [INTEROPERABILITY – 12-inch and 8-inch](#) appendix.

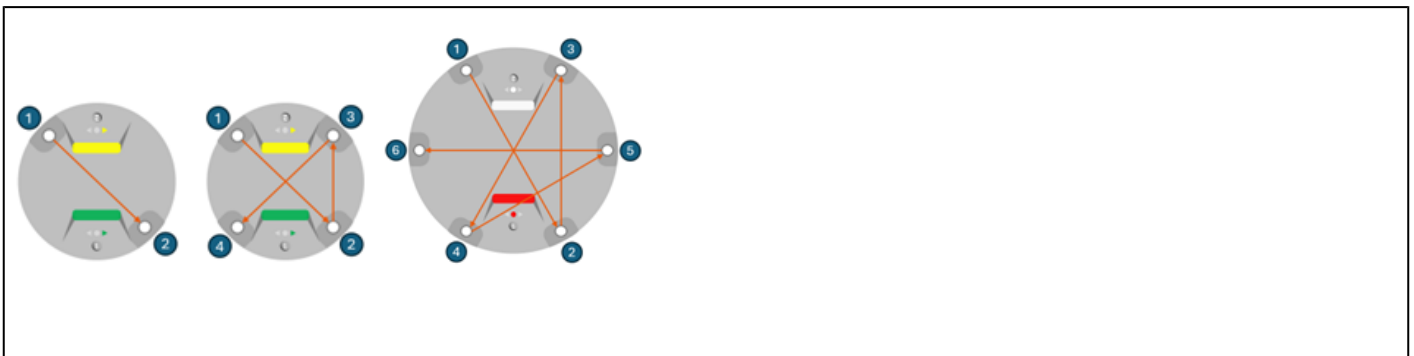


#### CAUTION

Do not use impact or high speed (>35 rpm) tools. Incorrect tightening can damage threads and fixture.

---

Table 2: Torque pattern



### Installation Inspection and Water-Tightness Test

- Visually inspect the installation (the fixture must be evenly seated in the base).
- Make sure the bolt and washer are flush with the light fixture.
- [Test the Light Fixture for Leaks \(Water-Tightness\)](#)
- Ensure all tools and items are removed from the work area.

### Post-Installation and Maintenance

After one week, the break loose torque may drop below the recommended value. This is typically due to slight settlement following installation. Perform a re-torque and visual inspection of each light fixture.

- Check for any installation issues or settlement.
- If issues are found, continue weekly inspections and investigate the cause.
- If inspection is successful, for future maintenance see [Basic Maintenance Program](#) and [Recommended Maintenance Program](#). For best results, adjust the program using local risk assessment and data analysis.

### Dismounting the Fixture from Base

- Use two large flat blade screwdrivers to carefully remove the light fixture from its base.
- Disconnect the secondary power supply connector cable.
- Remove and discard the O-ring gasket and bolts. Do this every time you remove the light fixture from its base.



#### CAUTION

To prevent fall and trip hazards when the base is open use a cover or spare fixture.

---

## 5.3 EQ Configuration – ILCMS Remote and Sensor

To learn more about updating or configuring our EQ light fixtures equipped with internal ILCMS remote and sensor technology, please refer to our [LINC360 manuals](#). These comprehensive guides cover firmware updates, configuration options and instructions on integrating EQ lights into the ILCMS system.

## 6.0 Maintenance

This section describes different steps for maintenance of the light fixture. You can ensure airfield safety and visibility while maintaining the integrity and performance of the inset light fixtures by following these detailed instructions.

Before you start, make sure you have read and understand [Safety instructions](#).

Find out the location of the light unit that needs maintenance. If the purpose is to replace an existing light unit with new one, make sure that corresponding unit is available. Find the type information on the identification tag with details of name.

Spare parts are available, if required. For more information, see [www.adbsafegate.com](http://www.adbsafegate.com) Spare Parts, or contact ADB SAFEGATE for assistance.



### CAUTION

Use of incorrect combination of gaskets, bolts and nuts can create severe damages to the product installation and create multiple safety risks.

You need to know what base the light fixture will be installed in, in order to choose the correct gasket, bolts and nuts.

Failure to follow these cautions can result in equipment damage or aircraft FOD. Refer to the [INTEROPERABILITY – 12-inch and 8-inch](#) appendix.

## 6.1 Basic Maintenance Program

It is important to understand that even though a LED fixture requires substantially lower maintenance in regard to the replacement of the light bulbs, some parts of the light fixture remain the same and still require the same level of maintenance (prisms, top cover, bolts).

There are recommended maintenance tasks to ensure that the equipment is in correct operating condition.

**Table 3: Maintenance tasks**

<b>Weekly</b>	<ul style="list-style-type: none"> <li>Visual inspection of the light fixture.</li> <li>Removal of dust from external surfaces of the light fixture.</li> </ul>
<b>Monthly</b>	<ul style="list-style-type: none"> <li>Check optical window for cleanliness, mechanical damage or moisture/condensation on the inside of the prism</li> <li>Check for improper torque on mounting bolts. Re-torque if needed.</li> </ul>
<b>Yearly</b>	<ul style="list-style-type: none"> <li>Detailed inspection of the light fixture</li> <li>Check of the body resistance, check for mechanical damage (for example cracks around the prism windows).</li> <li>Clean optical windows</li> </ul>
<b>Bi-yearly</b>	<ul style="list-style-type: none"> <li>Check for presence of water in mounting support by unscrewing and lifting light fixture from base and check for water ingress and corrosion. Replace gasket between light fixture and base.</li> </ul>
<b>After snow removal</b>	<ul style="list-style-type: none"> <li>Check for damaged light fixtures. Any damaged light fixtures should be replaced and brought in and properly investigated and repaired.</li> </ul>

**A daily function check is referred to in the document:**

*ICAO, Airport Services Manual Part 9, Airport Maintenance Practice and FAA AC 150/5340-26A, Maintenance of airport visual aids facilities.*

Any issues found during maintenance tasks should be corrected accordingly and properly documented.

A proper asset management system, such as ADB SAFEGATE's [CORTEX Service](#), helps to store and document data. The system gives important information about local conditions. Use this information for preventive maintenance planning. Preventive maintenance can reduce the need for reactive maintenance. For more information visit <https://adbsafegate.com/services/airside-maintenance/>

## 6.2 Recommended Maintenance Program

### Service Life and Inspection Intervals

All products have an expected service life. Service life is the lifetime of the product and reaching the end means that it is no longer serviceable and should be replaced.

There are several key external factors that influences the service life of a product.

- Aircraft traffic movements
- Location on the airfield
- Inspection and maintenance frequency
- Chemical usage

### Air Traffic Movements (ATM)

The expected lifetime of a light fixture will be highly impacted by the traffic volume and the number of aircraft that are mechanically putting stress on the light fixtures. Airports with a higher traffic volume will have a light fixture with a shorter expected lifetime than an airport with a lower traffic volume.

The ATM can be divided into three categories for the recommendation of inspections as well as for the expected lifetime of a light fixture.<sup>1</sup>

- 0-100k movements/year
- 100k-200k movements/year
- >200k movements/year

<sup>1</sup>Based on ADB SAFEGATE's field experience and investigation made in close collaboration with an independent consultant and the airport team.

### Location on the Airfield

The expected lifetime of a light fixture is highly dependent on the location where it is installed on an airfield. Three different areas have been defined by color categorization that are exposed to a different degree of mechanical impact. These three categories are used as a basis for the recommendation of inspections as well as for the expected lifetime of a light fixture.

- **Red** – Touch Down Area defined as 6m from either side of the runway centerline for a distance starting from 50m before the TDZ markings and extending to 200m beyond the TDZ markings as seen from the landing direction.
- **Red** – Rapid Exit Taxiway centerline lights from the runway centerline to 50m beyond the edge of the runway.
- **Amber** – All runway areas outside the Red areas.
- **Amber** – All taxiway areas outside the Red areas, including taxiway intersections for which more than 50% of the aircraft traffic turn more than 45 degrees.
- **Green** – Areas outside Red and Amber areas



### NOTICE

A reliable means of recording the location history of fittings (i.e. ADB SAFEGATE's CORTEX Service) is recommended to ensure that the maximum duration in critical red areas of the runway is not exceeded.

---

## 6.2.1 Preventive Maintenance and Regular Inspections

Preventive maintenance and regular inspections will help extend the service life of the light fixture, reduce overall maintenance costs, and minimize downtime from reactive maintenance tasks.



A proper asset management system, such as ADB SAFEGATE's CORTEX Service, helps to store and document important information about local conditions. Use this information for preventive maintenance planning.

CORTEX Service is ADB SAFEGATE's digital solution for asset tracking, inspection, and maintenance. This system helps airports:

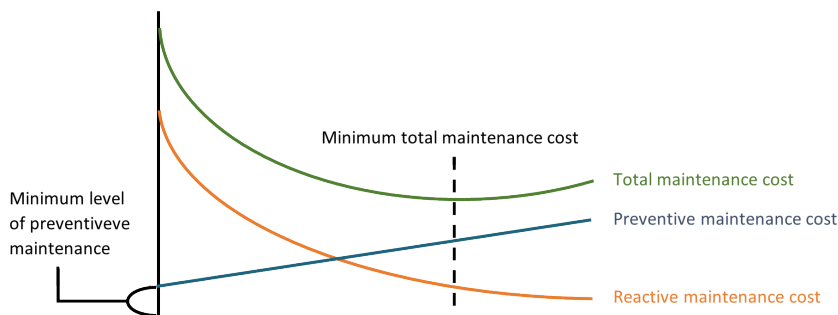
- Register airside assets.
- Schedule and track maintenance tasks electronically.
- Record inspections and maintenance activities according to ICAO and FAA standards.

CORTEX Service stores important data. It gives information about local conditions. Maintenance teams can use this information for preventive maintenance planning. This helps reduce unexpected repairs.

For more details, visit: <https://adbsafegate.com/services/airside-maintenance/>

Regular inspections and well-defined preventive maintenance planning will help to reduce the overall maintenance cost and reduce downtime from reactive maintenance tasks.

**Figure 3: Maintenance cost graph**



## 6.2.2 Inspection Intervals

### Visual Inspection Checklist

To ensure dependable performance and optimize your airside operations, please visually inspect the light fixture with the following steps:

- **Prism Condition:** Confirm the prism is clean, free of cracks, and clear for optimal visibility.
- **Gasket Integrity:** Check that all gaskets are intact and show no signs of deterioration, supporting a reliable seal.
- **Moisture Check:** Ensure there is no moisture or condensation inside the prism, safeguarding against potential electrical or optical issues.
- **Corrosion Assessment:** Inspect the top cover, prism area, and bolts for any signs of corrosion. Early detection helps maintain a connected airfield and smarter, data-driven decision making.
- **Bolt Torque Verification:** Verify that all nuts and bolts are torqued according to specification, ensuring safety and long-term reliability.

Based on the air traffic volume and location on the airfield, the following matrix was created for recommended inspection intervals:

**Figure 4: Visual inspection matrix**

Location	RED	Amber	Green
ATM			
0-100k movements	2 Months 1 Year	6 Months 3 Years	1 Year 3 Years
100k-200k movements	2 Months 1 Year	4 Months 2 Years	1 Year 3 Years
Above 200k movements	1 Months 6 Months	2 Months 1 Year	1 Year 3 Years

**Inspection interval**

## Detailed Inspection Checklist

To ensure reliable performance and support smarter, data-driven decision making on your airfield, please follow these steps for a comprehensive inspection:

- **Physical Inspection:** Unbolt the light fixture and carefully lift it from the base for a thorough assessment.
- **Water Ingress:** Examine both the light fixture and base, focusing on the mating surfaces, for any signs of water ingress or corrosion.
- **Corrosion:** For deep base installations (L-868), check for water accumulation. If water exceeds 6 inches, arrange for removal.
- **Damage Assessment:** Inspect both the light fixture and base for any physical damage that could impact performance.
- **Gasket Replacement:** Replace the gasket between the light fixture and base to maintain a watertight seal and dependable operation.
- **Inspection Frequency:** For aging units that have reached over 75% of their expected lifetime, we recommend halving inspection intervals to ensure continued reliability.
- **Policy Tracking:** Track and record policies in direct relation to the age of each AGL unit, supporting proactive maintenance and asset longevity.
- **Rotation of AGL in Critical Areas:** To optimize performance, rotate AGL units in critical areas as part of your maintenance program.
- **Data Recording for Asset Management:** Record location rotation and individual asset data. Keeping accurate records with a proper asset management system, such as ADB SAFEGATE's [CORTEX Service](#), empowers smarter, better decisions regarding maintenance and asset management.. For more information visit <https://adbsafegate.com/services/airside-maintenance/>



### Note

Data for justification is essential when relaxing the frequency of certain maintenance tasks, such as torque management,

## Expected Service Life for Critical Areas

With effective asset management — such as CORTEX Service — and a strong data capture strategy, you can adjust these guidelines to fit your local needs. The service life may change depending on your specific conditions.

The table below shows the recommended service life.

<b>RED Zone - ATM &lt;100k</b>	15 years
<b>RED Zone - ATM &gt;100k &lt;200K</b>	10 years
<b>RED Zone - ATM &gt;200k</b>	7 years

If you have any questions or need support, please contact your local sales representative. We are here to help you review your local conditions and create a clear maintenance plan. Together, we can optimize the service life of your investment.

## 6.2.3 Prism Cleaning

Regular cleaning of the prisms is crucial for maintaining light quality and fixture efficiency.

### Disclaimer:

ADB SAFEGATE gives specific cleaning instructions and recommendations for its airfield light fixtures and signs. Following these guidelines helps ensure best performance and long service life.

If you use a cleaning method that is different from ADB SAFEGATE's recommendations, you do so at your own risk. ADB SAFEGATE is not responsible for any damage, reduced performance, or failure caused by improper cleaning.

### Safety Precautions

1. Make sure the light fixture is turned off at the main power source to eliminate electrical hazards.
2. Use safety gloves to protect your hands and safety glasses to shield your eyes from dust and debris.

### Basic Cleaning Procedure

1. Gently dust the prism with a soft, dry brush or cloth to get rid of any loose dirt or dust.
2. Remove any rubber build-up using a plastic scraper.
3. Apply lukewarm water mixed with a pH-neutral soap.
4. Thoroughly rinse off with water and dry prism with a soft, lint-free cloth to prevent water spots and ensure clear illumination.

## Removing Stubborn Rubber Build-up or Compacted Snow

- Cleaning chemicals and/or de-icing liquids with a pH of 11 or less may be used in cases where pH-neutral soap is not enough. See [Approved Chemicals for Cleaning](#) and [Protocol for Introducing New Chemical Solutions](#). After applying chemicals, rinse all surfaces thoroughly with clean fresh water to remove any residue, as leftover chemicals can damage adhesives, gaskets, and other components, causing corrosion or reduced performance.



### CAUTION

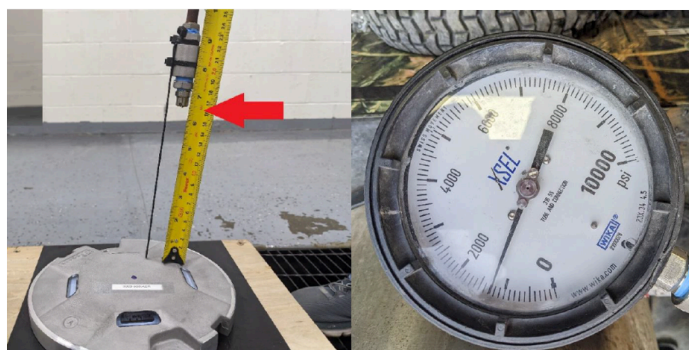
The extensive application of chemical cleaners and/or de-icing liquids may damage the light fixtures and underground electrical components, leading to corrosion and increased maintenance requirements and costs.

Do not use abrasive cleaners or pads that can scratch the prism surface.

Sapphire prisms, can be sensitive to certain chemicals as they are made by bonding a thin sapphire slab to a glass prism. Always test cleaning chemicals for compatibility with sapphire prisms to avoid weakening the adhesive bond. See [Protocol for Introducing New Chemical Solutions](#).

- High-pressure water jets may also be used for stubborn build-up ensuring the minimum distance of 165 mm (6.5 inches) is maintained and the water pressure does not exceed 80 bar (1300 psi) to prevent damage to the gaskets, high-pressure water jets may be employed for cleaning.

**Figure 5: High-pressure water jet precautions**



- After cleaning, gently and thoroughly dry prism with a soft, lint-free cloth to prevent water spots and ensure clear illumination.

## Approved Chemicals for Cleaning

The following chemicals are tested for compatibility with ADB SAFEGATE light fixtures:

- Potassium Acetate
- Potassium Formate
- Sodium Acetate
- Sodium Formate

## Protocol for Introducing New Chemical Solutions

- Verify the intended use of the chemical on similar materials and products, adhering to ADB SAFEGATE recommendations.
- Initially, conduct tests on a few units to ensure there is no damage to the light fixture or gaskets before applying the chemical to a larger installation.



## 7.0 Workshop Maintenance

This section gives step-by-step instructions for safe and correct workshop maintenance. The design of your light fixture may be different from the picture, depending on the application. Always follow the described work flow and use the specified torque levels.

### Before you start:

- Read and understand [Safety](#) and [Safety Considerations](#).
- Remember that all maintenance that requires opening the light fixture must be done in a dedicated maintenance area.
- If you remove a light fixture from its base, cover the base or install a spare light fixture to prevent hazards.
- Only authorized personnel should disassemble fittings. This should be done with prior agreement from ADB SAFEGATE.

### The workshop maintenance chapter includes the following sections:

1. [Open the light fixture and disconnect the bottom pan from the top cover](#)
2. [Replace the bottom pan assembly](#)
3. [Replace the top cover assembly](#)
4. [Replace the secondary cable – SJO cord set](#)
5. [Replace the secondary cable – style-6 and French 3-pin cord set](#)
6. [Replace the LED wire harness](#)
7. [Replace the light engine assembly](#)
8. [Replace the prism and its gasket](#)
9. [Connect the bottom pan to the top cover and close the light fixture](#)
10. [Test the light fixture for leaks \(water-tightness\)](#)

## 7.1 Open the Light Fixture and Disconnect the Bottom Pan from the Top Cover

### Tools and equipment to be used:

- A soft cloth big enough to cover the light fixture.
- A flat-head screwdriver
- A screwdriver or a variable-speed torque drill driver with a T30 Torx bit for 12-inch light fixture or a T25 Torx bit for an 8-inch light fixture.



### ATTENTION

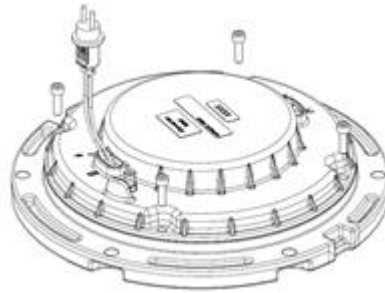
DO NOT use an impact driver

---

### Procedure:

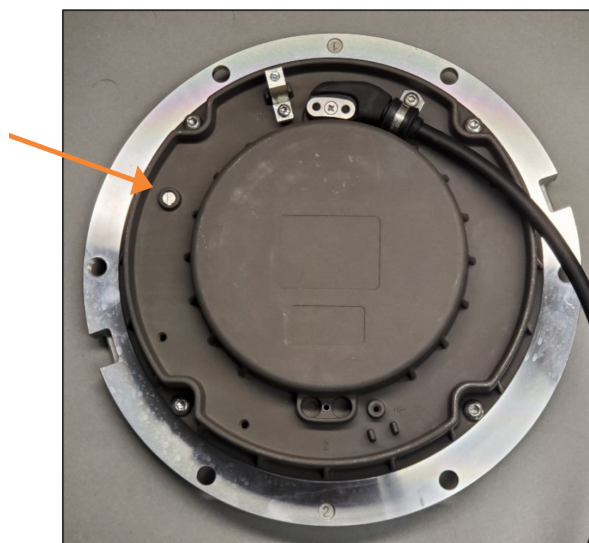
1. Put the soft cloth on a sturdy surface and place the light fixture on the cloth with the top cover facing down. (The soft cloth is to protect the top cover from scratches).
2. Remove and discard the four fixation screws.

**Figure 6:** Fixation screws



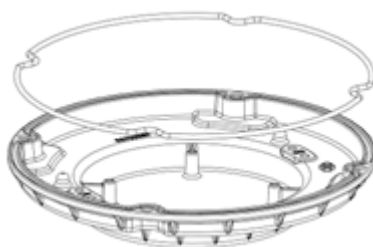
- Loosen the pressure release screw.

**Figure 7: Pressure release screw**



- Lift the bottom pan carefully turning it over (converter side up). Make sure you do not damage the cables when opening the light fixture.
- Disconnect the wires between the converter and the light engine.
- Disconnect the wires between the converter and the arctic kit heater(s) - if applicable.
- Remove the gasket from the o-ring groove and discard.

**Figure 8: Gasket (o-ring)**



## 7.2 Replace the Bottom Pan Assembly

1. [Open the Light Fixture and Disconnect the Bottom Pan from the Top Cover.](#)
2. Replace the bottom pan assembly.  
Make sure to **use new gasket and screws when replacing the bottom pan.**
3. [Connect the Bottom Pan to the Top Cover and Close the Light Fixture](#)

## 7.3 Replace the Top Cover Assembly

1. [Open the Light Fixture and Disconnect the Bottom Pan from the Top Cover.](#)
2. Remove light engine assembly. See step 2 in [Replace the Light Engine Assembly](#)
3. Replace the old top cover with a new top cover assembly.
4. Attach light engine assembly. See step 3 in [Replace the Light Engine Assembly](#)
5. [Connect the Bottom Pan to the Top Cover and Close the Light Fixture](#)

## 7.4 Reset the Fail-Open Converter

### Parts to be used:

- Fuse resistor – new style, spare part kit: SP.EZ00015-000-01 (20 pcs)
- Fuse resistor – legacy, spare part kit: SP. 6132.00.250 (20 pcs)

### Procedure:

1. [Open the Light Fixture and Disconnect the Bottom Pan from the Top Cover.](#)
2. Locate the fuse resistors

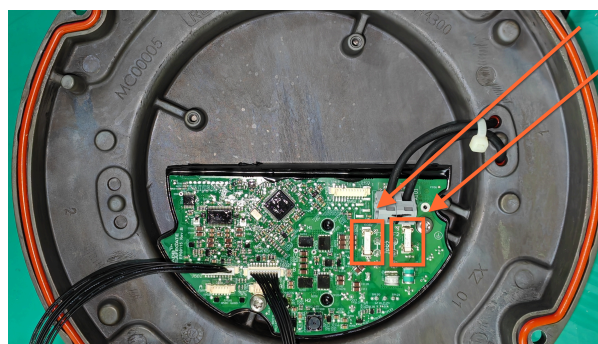
#### Converters – new style, in 8-inch bottom pan

Figure 9: 1-connector converter (2 fuse resistors)



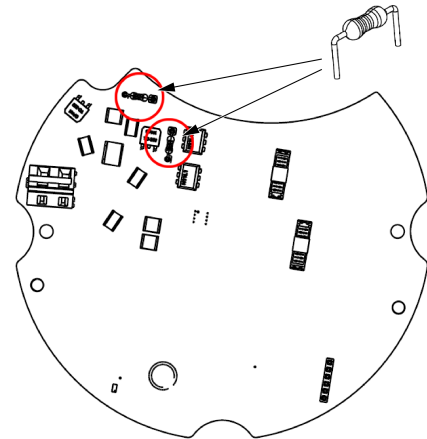
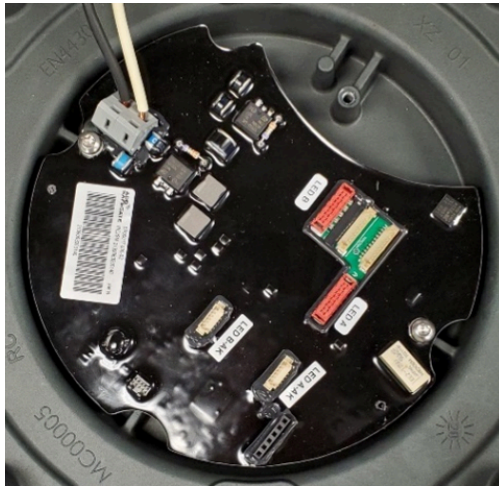
#### Converters – new style, in 12-inch bottom pan

Figure 10: 1-connector converter (2 fuse resistors)



## Converters – Legacy

**Figure 11: 1-connector converter (2 fuse resistors)**



3. Gently **remove all the fuse resistors** by pulling them out of the sockets of the converter. Make sure to **dispose of the old fuse resistors**.



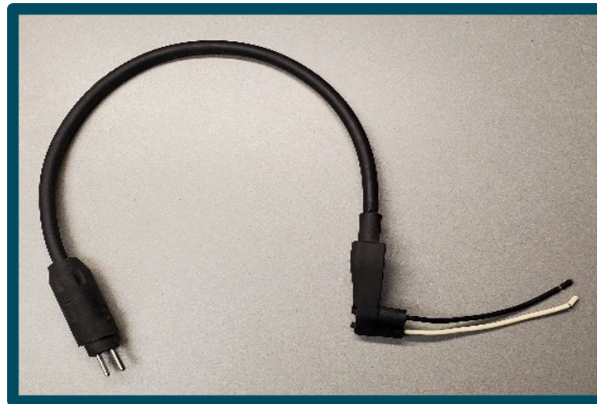
### ATTENTION

Replace all fuse resistors at the same time.  
For the 1-connector converter, replace both fuse resistors.

4. Gently place the new fuse resistors into the sockets of the converter.
5. [Connect the Bottom Pan to the Top Cover and Close the Light Fixture](#)

## 7.5 Replace the Secondary Cable – SJO Cord Set

Figure 12: SJO cord set



### Tools to be used:

- Screwdriver or variable-speed torque drill driver with T20 Torx bit
- Small flat head screwdriver or insert tool, part no : 236-332

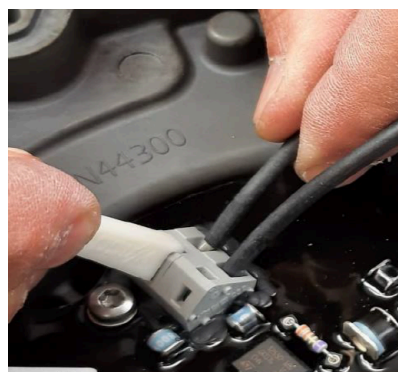
Figure 13: Insert tool



### Procedure:

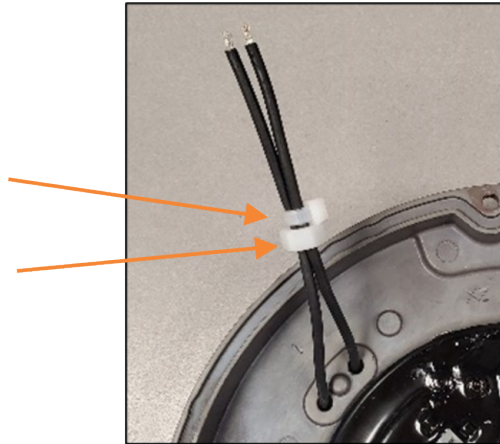
1. [Open the Light Fixture and Disconnect the Bottom Pan from the Top Cover.](#)
2. Release the secondary cable wires from the converter:
  - a. Place a small flat-head screwdriver into one of the the openings (or two of the openings with insert tool).
  - b. Gently press down on the screwdriver (or insert tool) to open the cable hole and insert/remove one of the secondary cables.
  - c. Gently release the downward pressure to lock the cable into place .
  - d. Repeat steps a-c for the other wire.

Figure 14: Releasing/locking secondary wires with insert tool



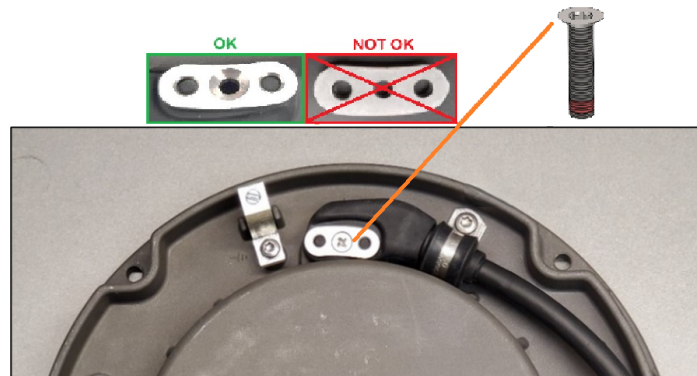
- Cut the wire tie and remove the nylon hex nut.  
Make sure to **discard the old hex nut**.

**Figure 15: Wire tie and nylon hex nut**



- Flip the bottom pan converter side down and remove the bolt and cord set retainer disc.  
Make sure to **discard the old bolt and cord-set retainer disc**

**Figure 16: Cord set retainer disc and bolt (SJO jacketed cable)**



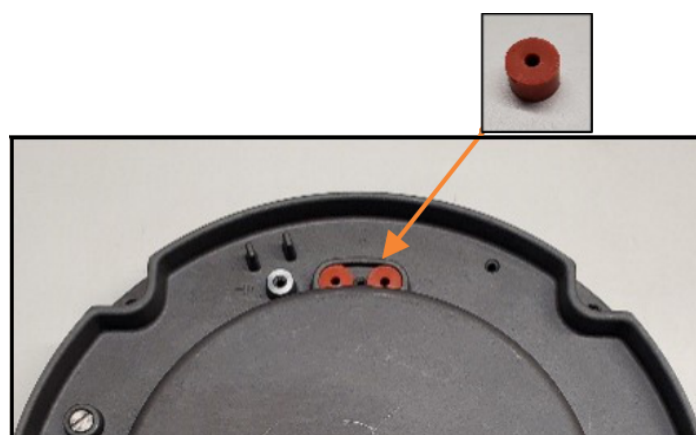
5. Open the cable clamp by removing the bolt, washer and lock washer of the cable clamp. Make sure to **discard the old bolt, washer and lock washer of the cable clamp.**

**Figure 17:** Cable clamp, bolt, washer and lock washer



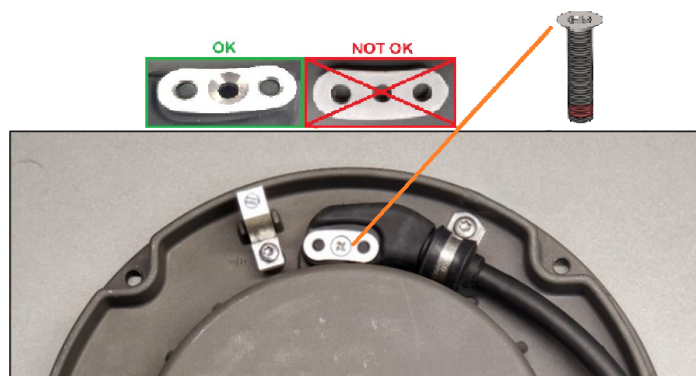
6. Remove and discard the old secondary cable.
7. Remove and discard the old cable gland gaskets and install new cable gland gaskets.

**Figure 18:** Cable gland gasket



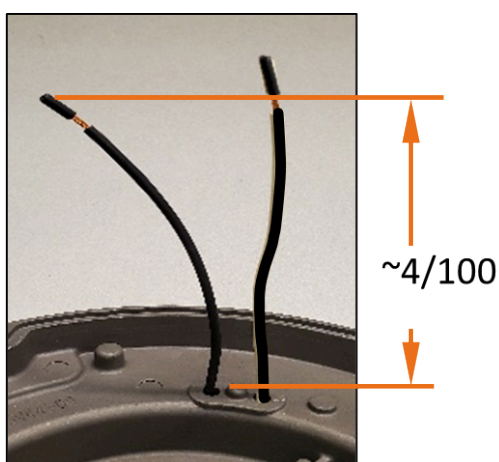
8. Install the new cord-set retainer disc and bolt (M4x10) **tightening the bolt about halfway** so the wires can move freely through the gland gaskets.

**Figure 19: Cord set retainer disc and bolt (SJO jacketed cable)**



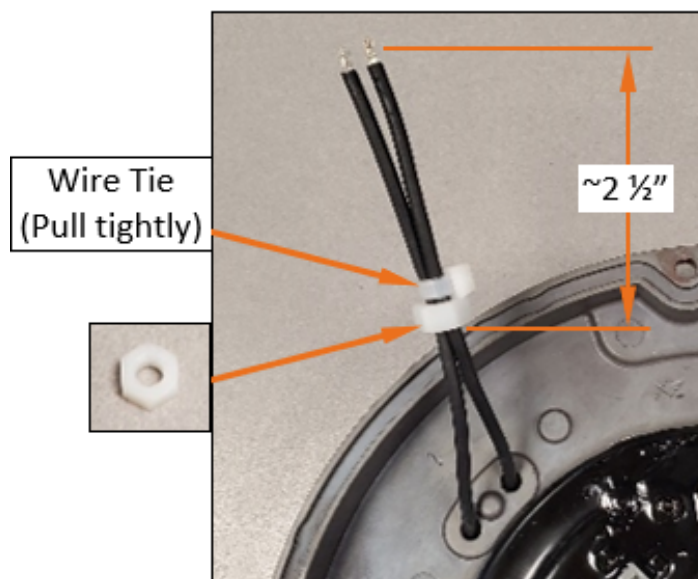
9. Insert the wires of the new secondary cable through the loosened gland gaskets feeding them through the bottom pan and flip the bottom pan converter side up. Hold the inserted cables in place while flipping so they do not exit the bottom pan.
10. Pull approximately 4 inches (100 mm) of the secondary cable through the cord set retainer disc plate. Make sure the 4-inches of the cable are on the converter side (the inside) of the bottom pan.

**Figure 20: Installation of secondary cable**



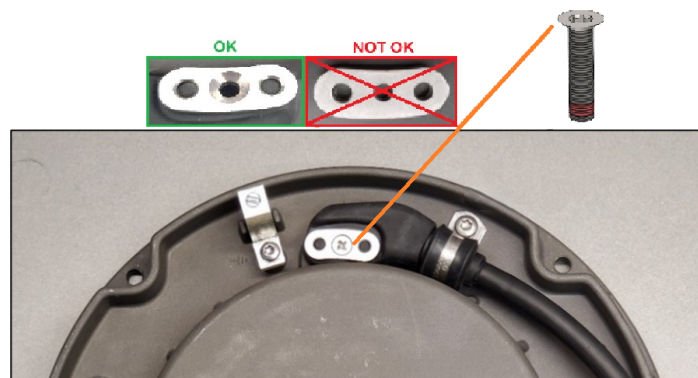
- Place the new nylon hex nut around the secondary cables and secure them tightly with a wire tie at a position of approximately 2½ inches (64 mm) from the end of the cables.

**Figure 21: Wire tie and nylon hex nut**



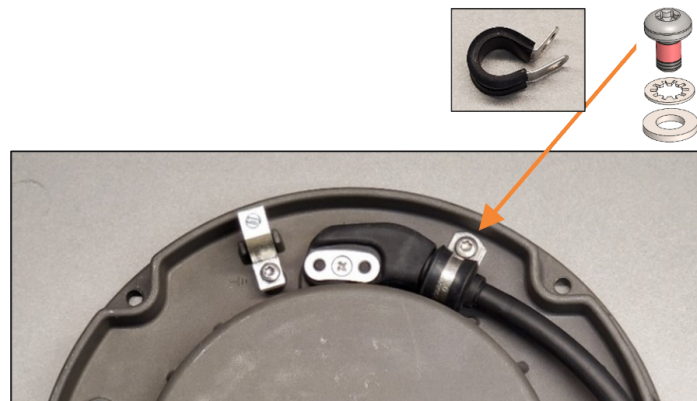
- Flip the bottom pan converter side down and tighten the new cord-set retainer bolt at 26 in-lbs (3 Nm).

**Figure 22: Cord set retainer disc and bolt (SJO jacketed cable)**



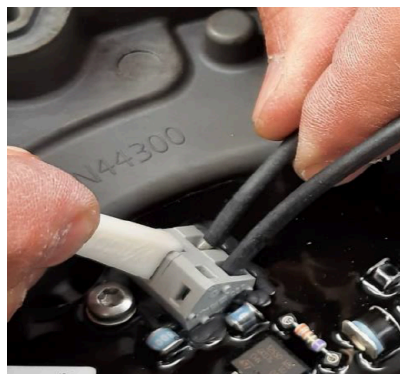
13. Inert the jacketed cable into the cable clamp and tighten the bolt, washer and lock washer of the cable clamp at 26 in-lbs (3 Nm) to fix the cable into place.

**Figure 23: Cable clamp, bolt, washer and lock washer**



14. Flip the bottom pan one last time and lock the secondary cables into the converter:
  - a. Place a small flat-head screwdriver into one of the the openings (or two of the openings with insert tool).
  - b. Gently press down on the screwdriver (or insert tool) to open the cable hole and insert/remove one of the secondary cables.
  - c. Gently release the downward pressure to lock the cable into place .
  - d. Repeat steps a-c for the other wire.

**Figure 24: Releasing/locking secondary wires with insert tool**



15. [Connect the Bottom Pan to the Top Cover and Close the Light Fixture](#)

## 7.6 Replace the Secondary Cable – Style-6 and French 3-pin Cord Set

Figure 25: Style 6 cord set



### Tools to be used:

- Screwdriver or variable-speed torque drill driver with T20 Torx bit
- Small flat head screwdriver or insert tool, part no : 236-332

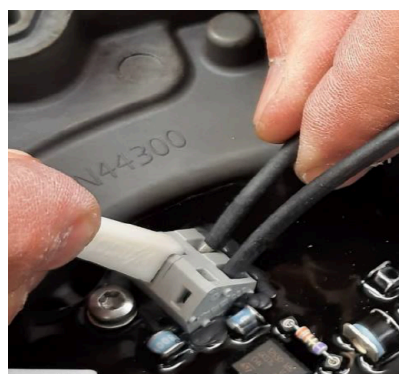
Figure 26: Insert tool



### Procedure:

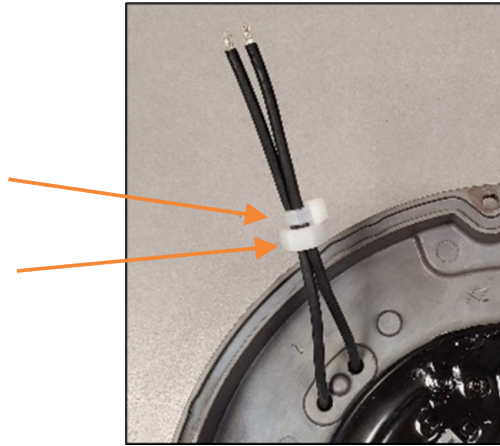
1. [Open the Light Fixture and Disconnect the Bottom Pan from the Top Cover.](#)
2. Release the secondary cable wires from the converter:
  - a. Place a small flat-head screwdriver into one of the the openings (or two of the openings with insert tool).
  - b. Gently press down on the screwdriver (or insert tool) to open the cable hole and insert/remove one of the secondary cables.
  - c. Gently release the downward pressure to lock the cable into place .
  - d. Repeat steps a-c for the other wire.

Figure 27: Releasing/locking secondary wires with insert tool



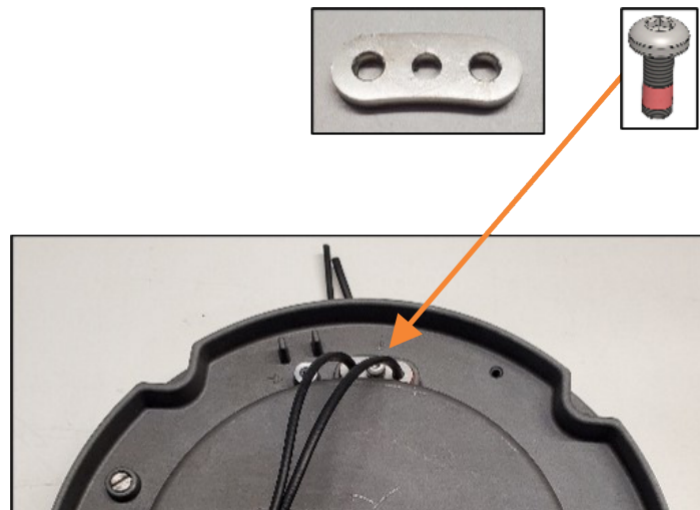
3. Cut the wire tie and remove the nylon hex nut.  
Make sure to **discard the old hex nut**.

**Figure 28: Wire tie and nylon hex nut**



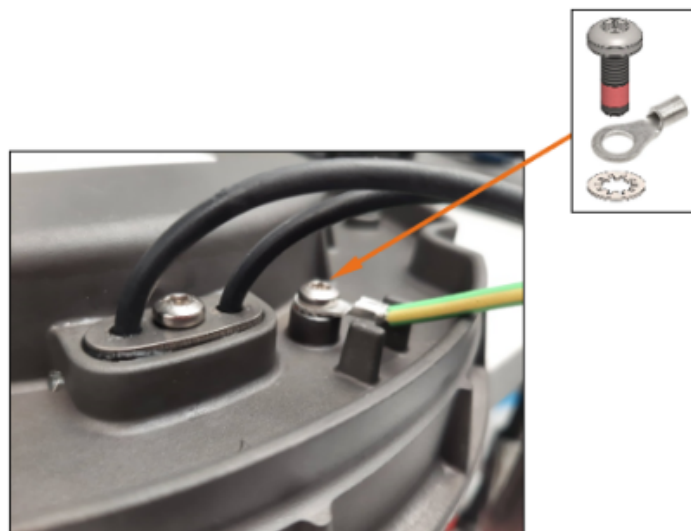
4. Flip the bottom pan converter side down and remove the bolt and cord set retainer disc.  
Make sure to **discard the old bolt and cord-set retainer disc**

**Figure 29: Cord set retainer disc and bolt**



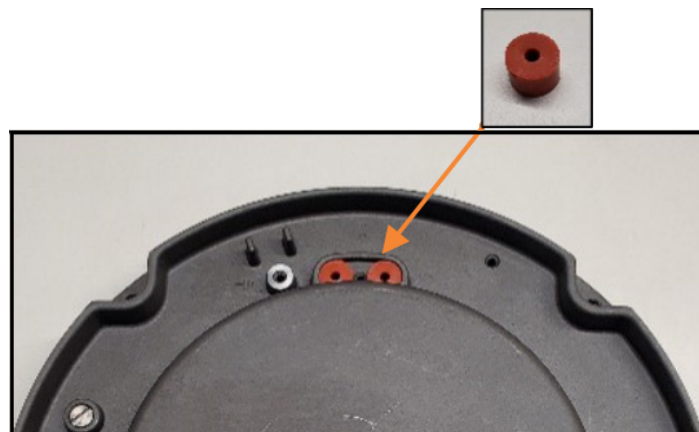
5. Disconnect the ground wire from the bottom pan and discard the bolt and washer.  
Bolt and washer ordered separately as "Grounding kit Style 6".

**Figure 30: Ground wire, bolt and washer**



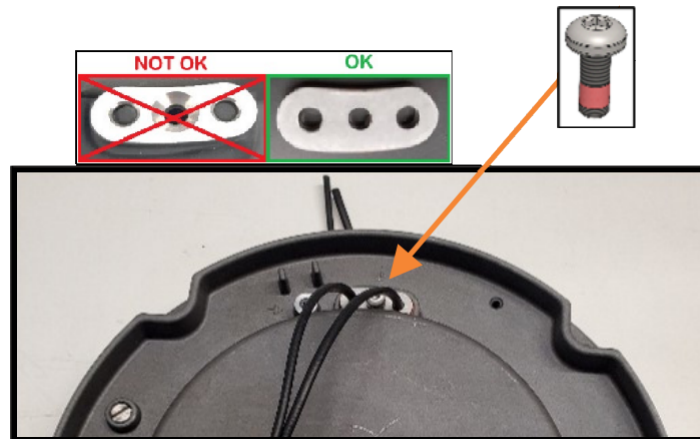
6. Remove and discard the old secondary cable.
7. Remove and discard the old cable gland gaskets and install new cable gland gaskets.

**Figure 31: Cable gland gasket**



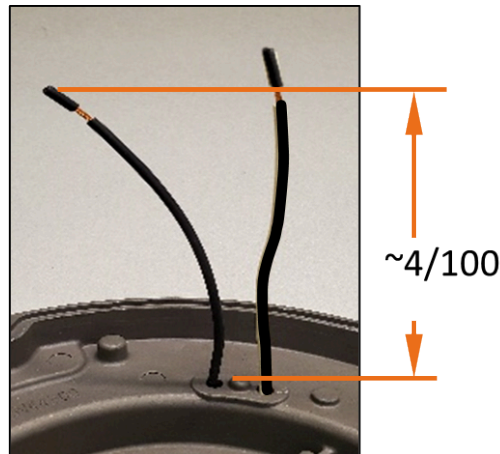
8. Install the new cord-set retainer disc and bolt (M4x10) **tightening the bolt about halfway** so the wires can move freely through the gland gaskets.

**Figure 32: Cord set retainer disc and bolt**



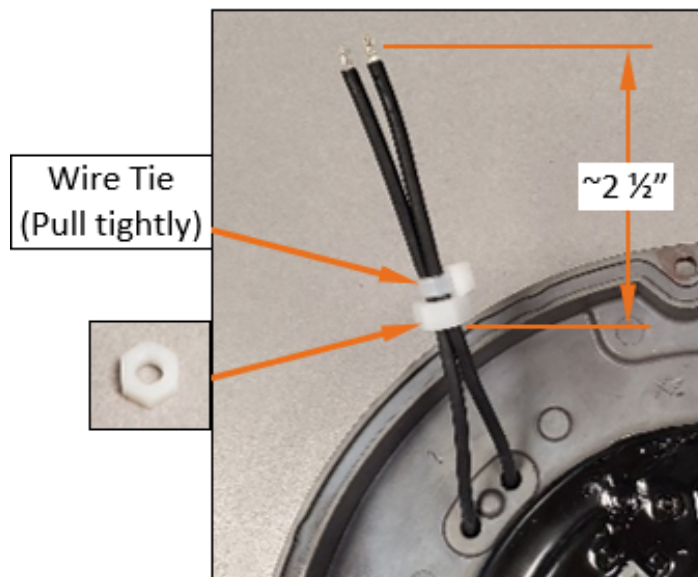
9. Insert the wires of the new secondary cable through the loosened gland gaskets feeding them through the bottom pan and flip the bottom pan converter side up. Hold the inserted cables in place while flipping so they do not exit the bottom pan.
10. Pull approximately 4 inches (100 mm) of the secondary cable through the cord set retainer disc plate. Make sure the 4-inches of the cable are on the converter side (the inside) of the bottom pan.

**Figure 33: Installation of secondary cable**



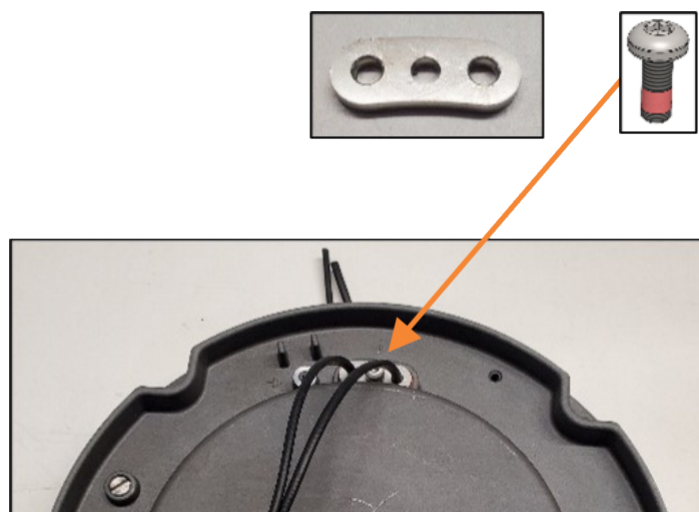
- Place the new nylon hex nut around the secondary cables and secure them tightly with a wire tie at a position of approximately 2½ inches (64 mm) from the end of the cables.

**Figure 34: Wire tie and nylon hex nut**



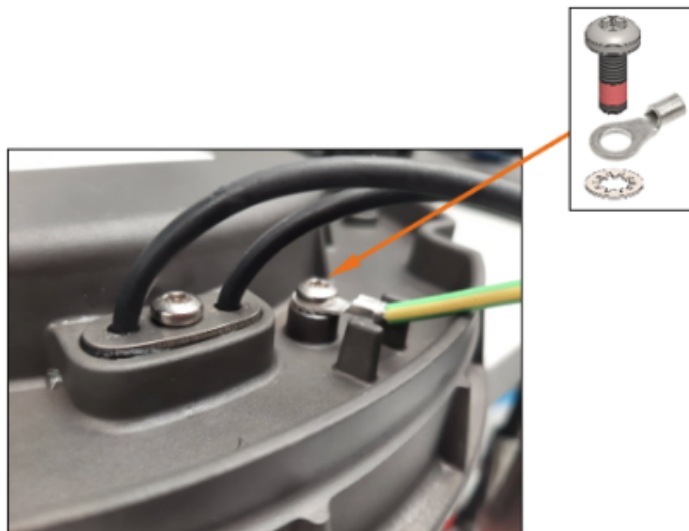
- Flip the bottom pan converter side down and tighten the new cord-set retainer bolt at 22 in-lbs (2.5 Nm).

**Figure 35: Cord set retainer disc and bolt**



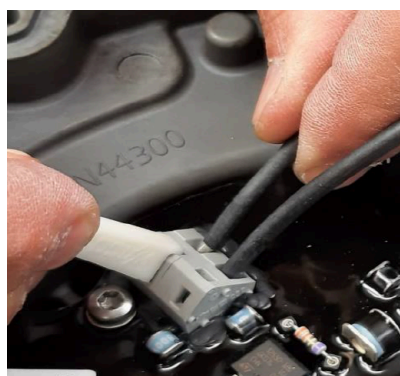
13. Connect the ground wire to the bottom pan and tighten the bolt and washer at 22 in-lbs (2.5 Nm). Bolt and washer ordered separately as "Grounding kit Style 6".

**Figure 36: Ground wire, bolt and washer**



14. Flip the bottom pan one last time and lock the secondary cables into the converter:
  - a. Place a small flat-head screwdriver into one of the the openings (or two of the openings with insert tool).
  - b. Gently press down on the screwdriver (or insert tool) to open the cable hole and insert/remove one of the secondary cables.
  - c. Gently release the downward pressure to lock the cable into place .
  - d. Repeat steps a-c for the other wire.

**Figure 37: Releasing/locking secondary wires with insert tool**



15. [Connect the Bottom Pan to the Top Cover and Close the Light Fixture](#)

## 7.7 Replace the Light Engine Assembly



### Note

- The blue protection spacers (gaps/plates) and gasket provided on delivery are intended only for transportation protection — please discard them and use the new spacers and gasket for installation
- Replacement light engine assemblies come with the power wire harness already attached
- Replace all light engines at the same time whenever one is replaced for optimal performance and reliability

### Tools to be used:

- Screwdriver or variable-speed torque drill driver with a T25 Torx bit.



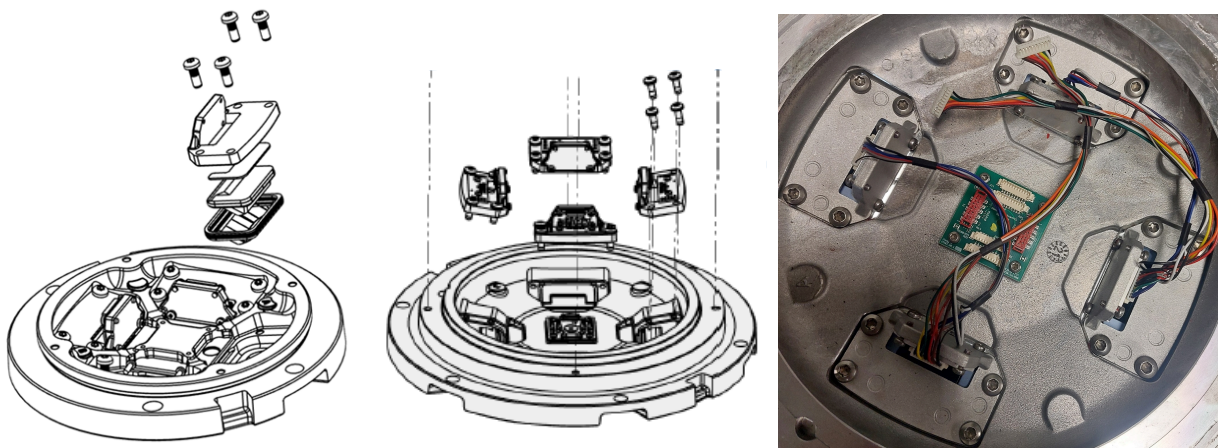
### ATTENTION

DO NOT use an impact driver

### Procedure:

1. [Open the Light Fixture and Disconnect the Bottom Pan from the Top Cover.](#)
2. Remove the four M5 screws from the light engine assembly and remove the light engine assembly from the fixture. Make sure to **dispose of the old screws.**

Figure 38: Light engine assembly



3. If the light engine is equipped with heater:



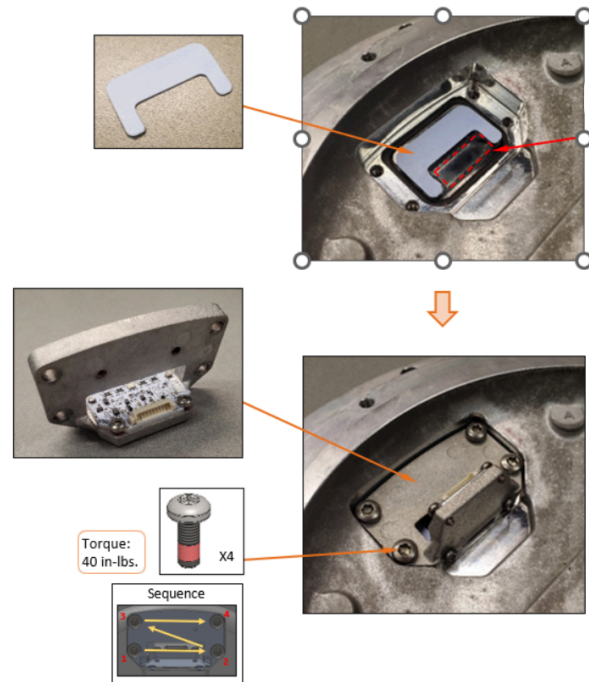
### Note

One arctic kit includes two heaters

- a. Replace the old thermal pad with a new one.
- b. Carefully remove clear film to expose tacky surface just prior to installation.

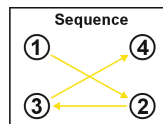
4. Position blue prism protection plate into the channel and mount the new light engine .

**Figure 39: Mounted light engine**



5. Attach the light engine assembly onto the top cover with four new M5 screws at 40 in-lbs (4.5 Nm). Make sure you tighten the screws in the correct order (refer to the image below).

**Figure 40: Mounting sequence**



6. [Connect the Bottom Pan to the Top Cover and Close the Light Fixture](#)

## 7.8 Replace the Prism and its Gasket



### IMPORTANT

Replace all four prisms if you replace any single prism. Prisms must be replaced if there is water in the fixture or if any prism is cracked.

#### Tools to be used:

- Screwdriver or variable-speed torque drill driver with Torx bit.



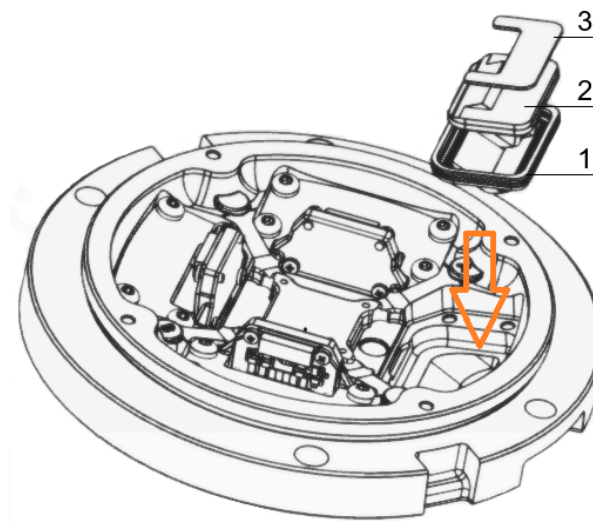
### ATTENTION

DO NOT use an impact driver

#### Procedure:

1. [Open the Light Fixture and Disconnect the Bottom Pan from the Top Cover.](#)
2. Remove light engine assembly. See step 2 in [Replace the Light Engine Assembly](#)
3. Unbolt the four screws from the LED holder. Remove the LED holder and the Teflon protective plate. If a heater is included, remove it as well.
4. Remove the prism and the prism gasket by pushing from the outside (under the top cover) and clean the prism cavity. Make sure to **dispose of the old prism and gasket.**
5. Install a new prism gasket (see 1 in image) into the prism cavity of the top cover. Make sure the longer slanted part of the gasket is facing the center of the fixture.

**Figure 41: Prism, gasket and Teflon protective plate**



6. Press a new prism (see 2 in image) into the prism gasket. Keep applying pressure for a few seconds until the prism is in place. Clean the prism surfaces with a clean rag or wipe to remove any fingerprints.
7. Place the Teflon protective plate (see 3 in image) on top of the prism and the LED holder on top of the Teflon protective plate. If a heater is included, place it between the Teflon protective plate and the LED holder.
8. Attach the LED holder to the top cover tightening the four M4x10 screws to 40 in-lbs (4.5 Nm).

9. Attach light engine assembly. See step 3 in [Replace the Light Engine Assembly](#)
10. [Connect the Bottom Pan to the Top Cover and Close the Light Fixture](#)

## 7.9 Connect the Bottom Pan to the Top Cover and Close the Light Fixture

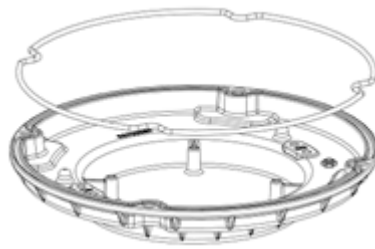
1. Clean all the contact surfaces and housing of the light fixture carefully.
2. Press a new gasket into the o-ring groove and make sure it is seated correctly.



### IMPORTANT

The o-ring gasket must always be changed when the fixture is disassembled.

**Figure 42: Gasket (o-ring)**



3. Connect the wire between the converter and the light engine.
4. Connect the wire between the converter and the arctic kit heater – if applicable.
5. Turn the top cover over (converter side down) carefully placing it over the bottom pan and making sure the poka-yoke pin is aligned correctly.

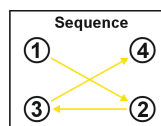


### IMPORTANT

Make sure you do not pinch the wires or the gasket between the top cover and bottom pan contact surface.

6. Attach the top cover to the bottom pan:
  - a. Torque the four new fixation screws in the star pattern shown below at 53 in-lbs (6 Nm) for 12-inch lights or 31 in-lbs (3.5 Nm) for 8-inch lights.

**Figure 43: Star pattern**



- b. Re-torque in the same pattern and at the same torque value.
7. [Test the Light Fixture for Leaks \(Water-Tightness\)](#)

## 7.10 Test the Light Fixture for Leaks (Water-Tightness)

---



### Note

A compressor, or a manual car tire pump, equipped with a manometer is required to check the light fixture for watertightness.

---

#### Tools to be used:

- Flat head screwdriver
- Pressure test fitting tool to be used (pt no.44A6104/A) for watertight testing

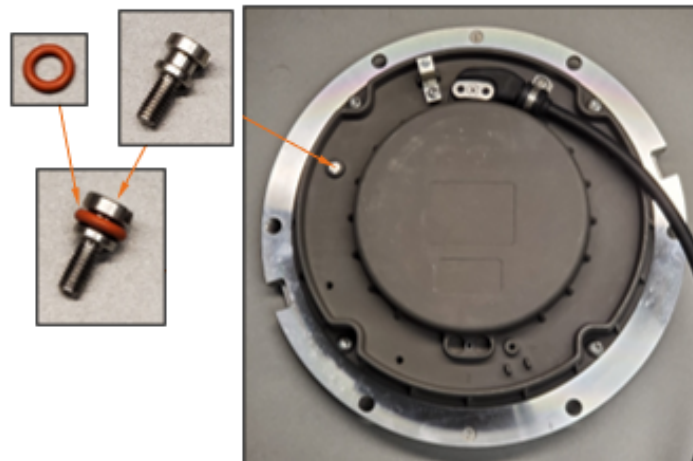
**Figure 44:** Pressure test fitting tool



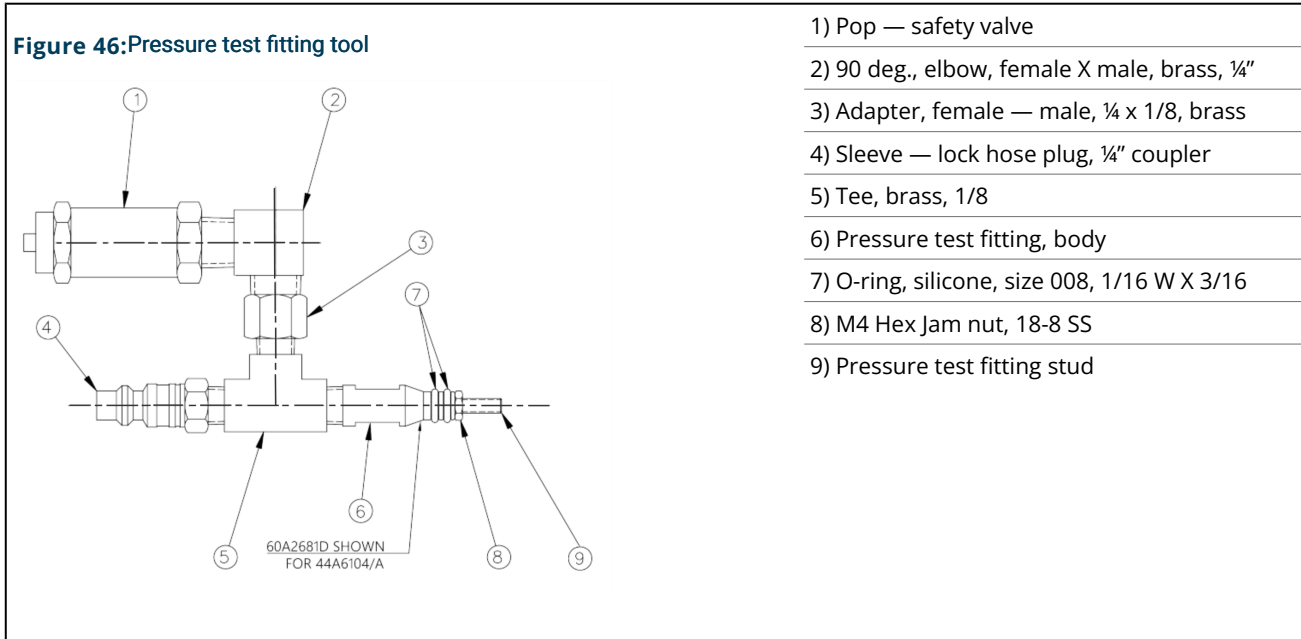
#### Procedure:

1. Remove the pressure release screw and discard.

**Figure 45:** Pressure release screw



2. Hand-tighten the pressure test fitting tool into the pressure-relief port. (The pressure-relief port is the opening where you removed the pressure release screw.)



3. Attach the shop airline (4) to the lock hose plug sleeve.
4. Using a compressor or a manual car tire pump equipped with a manometer, pressurize to 20 psi (130 kPa). **Never exceed a pressure of 22 psi (150 kPa)** inside the light fixture. A higher pressure may cause injuries and damage the light.
5. Submerge the pressure test fitting into a water tank.
6. Wait 3 minutes and check if air leaks out between:
  - The bottom pan and the top cover
  - The prism and the top plate
  - The watertightness valve and top plate

If air leaks out of the light fixture, it is not watertight and must be repaired:

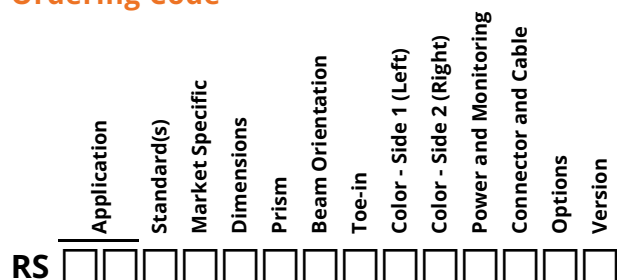
  - Release the air from the light
  - Disassemble the light fixture
  - Re-check the mating surfaces and gaskets
  - Re-assemble the light fixture
  - Return to step 1
7. If the fixture is watertight, depressurize and install a new pressure release screw at 26 in-lbs (3 Nm).



## 8.0 Ordering Codes

### 8.1 L-852T(L) LED Taxiway Edge

#### Ordering Code



#### Application

TE = Taxiway Edge

#### Standard(s)

1 = FAA / ICAO

#### Market Specific

0 = None

1 = Buy American Preference (BAP)<sup>1</sup>

#### Dimensions

1 = 8 inch (203 mm) diameter, 2 bolt

2 = 12 inch (305 mm) diameter, 11.25 inch BC<sup>2,5</sup>

4 = 12 inch (305 mm) diameter, 10.25 inch B<sup>2,6</sup>

#### Prism

P = 4 protected prisms

#### Beam Orientation

3 = Omnidirectional

#### Toe-in

N = Not Applicable

#### Color - Side 1 (Left)

B = Blue

Y = Yellow<sup>3</sup>

1 = Infrared Blue<sup>3</sup>

2 = Infrared Yellow<sup>3</sup>

#### Color - Side 2 (Right)

N = Not Applicable

#### Power and Monitoring

S = 2.8 - 6.6 A, Non-Monitored — Power Only

M = 2.8 - 6.6 A, Fail-Open Monitoring

R = 2.8 - 6.6 A, EQ Integrated LINC 360

#### Connector and Cable

1 = 1 x Style 6 2-Pole Plug, 2 Individual Wires<sup>4</sup>

2 = 1 x Style 1 2-Pole Plug, Jacketed SO 2 Core Cable<sup>4</sup>

5 = 1 x Flat 3-Pole Plug, 3 Individual Wires<sup>3</sup>

#### Options

0 = None

1 = Arctic Kit

#### Version

2 = Version 2

#### Ordering Code Notes

1. Required for FAA when funded by AIP.
2. L-867B base can mounting — existing L-867B base must have a top flange with a 9.25 inch ID. L-867B bases made prior to 2007 will have a top flange with a 8-inch ID. Use AA132820X adapter ring with 8-inch fixture for these applications.
3. Not ETL submitted or not applicable to FAA market.
4. All Style 1 corded fixtures will include a ground lug. All Style 6 or 3-pole corded fixtures will be provided with grounding screw(s).
5. 285 mm; L-868B mount
6. 260 mm; L-867B mount

## 8.2 Protected Runway Edge, Medium Intensity

### Ordering Code

	Application	Standard(s)	Market Specific	Dimensions	Prism	Beam Orientation	Toe-in	Color - Side 1 (Left)	Color - Side 2 (Right)	Power and Monitoring	Connector and Cable	Options	Version
<b>RS</b>	<input type="checkbox"/>	<input type="checkbox"/>	<input type="checkbox"/>	<input type="checkbox"/>	<input type="checkbox"/>	<input type="checkbox"/>	<input type="checkbox"/>	<input type="checkbox"/>	<input type="checkbox"/>	<input type="checkbox"/>	<input type="checkbox"/>	<input type="checkbox"/>	<input type="checkbox"/>

#### Application

ME = Medium intensity Runway/Approach

#### Standard(s)

3 = ICAO

#### Market Specific

0 = None

#### Dimensions

1 = 8 inch (203 mm) diameter, 2 bolt

#### Prism

P = 4 protected prisms

#### Beam Orientation

3 = Omnidirectional

#### Toe-in

N = Not Applicable

#### Color - Side 1 (Left)

W = White

#### Color - Side 2 (Right)

N = Not Applicable

#### Power and Monitoring

S = 2.8 - 6.6 A, Non-Monitored — Power Only

M = 2.8 - 6.6 A, Fail-Open Monitoring

R = 2.8 - 6.6 A, EQ Integrated LINC 360

#### Connector and Cable

1 = 1 x Style 6 2-Pole Plug, 2 Individual Wires

#### Options

0 = None

#### Version

2 = AXON

## 8.3 Protected Apron Maneuvering Guidance

### Ordering Code

	Application	Standard(s)	Market Specific	Dimensions	Prism	Beam Orientation	Toe-in	Color - Side 1 (Left)	Color - Side 2 (Right)	Power and Monitoring	Connector and Cable	Options	Version
RS	<input type="checkbox"/>	<input type="checkbox"/>	<input type="checkbox"/>	<input type="checkbox"/>	<input type="checkbox"/>	<input type="checkbox"/>	<input type="checkbox"/>	<input type="checkbox"/>	<input type="checkbox"/>	<input type="checkbox"/>	<input type="checkbox"/>	<input type="checkbox"/>	<input type="checkbox"/>

#### Application

AM = Apron Stand Maneuvering Guidance

#### Standard(s)

3 = ICAO

#### Market Specific

0 = None

#### Dimensions

1 = 8 inch (203 mm) diameter, 2 bolt

#### Prism

P = 4 protected prisms

#### Beam Orientation

3 = Omnidirectional

#### Toe-in

N = Not Applicable

#### Color - Side 1 (Left)

R = Red

Y = Yellow

#### Color - Side 2 (Right)

N = Not Applicable

#### Power and Monitoring

S = 2.8 - 6.6 A, Non-Monitored — Power Only

M = 2.8 - 6.6 A, Fail-Open Monitoring

R = 2.8 - 6.6 A, EQ Integrated LINC 360

#### Connector and Cable

1 = 1 x Style 6 2-Pole Plug, 2 Individual Wires

5 = 1 x Flat 3-Pole Plug, 3 Individual Wires<sup>1</sup>

#### Options

0 = None

#### Version

2 = Second edition

### Ordering Code Notes

1. French 3-pin plug (1F).

## 8.4 L-852E(L) Taxiway Intersection

### Ordering Code

	Application	Standard(s)	Market Specific	Dimensions	Prism	Beam Orientation	Toe-in	Color - Side 1 (Left)	Color - Side 2 (Right)	Power and Monitoring	Connector and Cable	Options	Version
RS	<input type="checkbox"/>	<input type="checkbox"/>	<input type="checkbox"/>	<input type="checkbox"/>	<input type="checkbox"/>	<input type="checkbox"/>	<input type="checkbox"/>	<input type="checkbox"/>	<input type="checkbox"/>	<input type="checkbox"/>	<input type="checkbox"/>	<input type="checkbox"/>	<input type="checkbox"/>

#### Application

LE = L-852E(L) Taxiway Intersection ≥ 1200 RVR

NL = NAVAIR Taxiway Intersection

#### Standard(s)

2 = FAA<sup>4</sup>

#### Market Specific

0 = None

1 = Buy American Preference (BAP)

#### Dimensions

1 = 8 inch (203 mm) diameter, 2 bolt

2 = 12 inch (305 mm) diameter, 11.25 inch BC (285 mm)

#### Prism

P = 4 protected prisms

#### Beam Orientation

3 = Omnidirectional

#### Toe-in

N = Not Applicable

#### Color - Side 1 (Left)

Y = Yellow<sup>1</sup>

G = G-Green (MOS and ICAO special)<sup>2</sup>

#### Color - Side 2 (Right)

N = Not Applicable

#### Power and Monitoring

S = 2.8 - 6.6 A, Non-Monitored — Power Only

M = 2.8 - 6.6 A, Fail-Open Monitoring

R = 2.8 - 6.6 A, EQ Integrated LINC 360

#### Connector and Cable

1 = 1 x Style 6 2-Pole Plug, 2 Individual Wires

2 = 1 x Style 1 2-Pole Plug, Jacketed SO 2 Core Cable

#### Options

0 = None

1 = Arctic Kit<sup>3</sup>

#### Version

2 = Version 2

### Ordering Code Notes

1. LE application only.
2. NL application only.
3. Only with 12-inch fixtures.
4. Includes NAVAIR and UFC.

## 9.0 Spare Parts

For more information, see [www.adbsafegate.com](http://www.adbsafegate.com) and the spare part lists, or contact ADB SAFEGATE for assistance.

### 9.1 Exploded View

Figure 47: Omnidirectional Light, 4 prisms, 8-inch

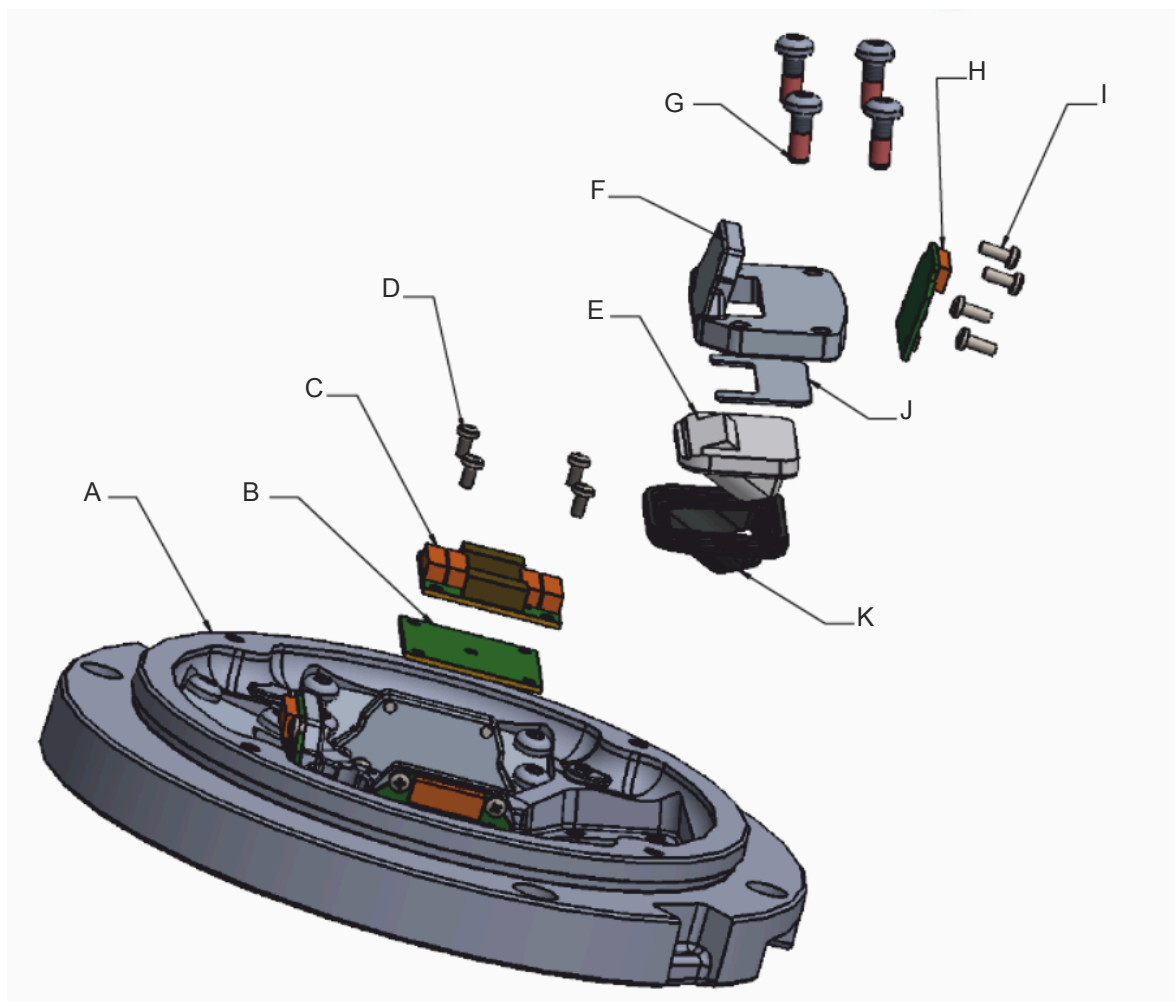
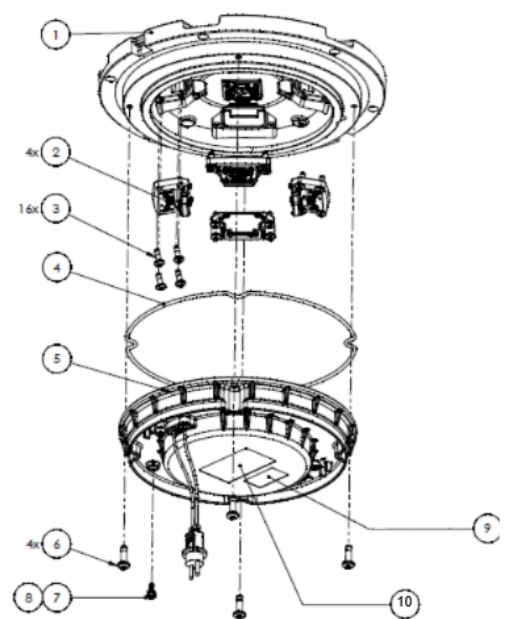


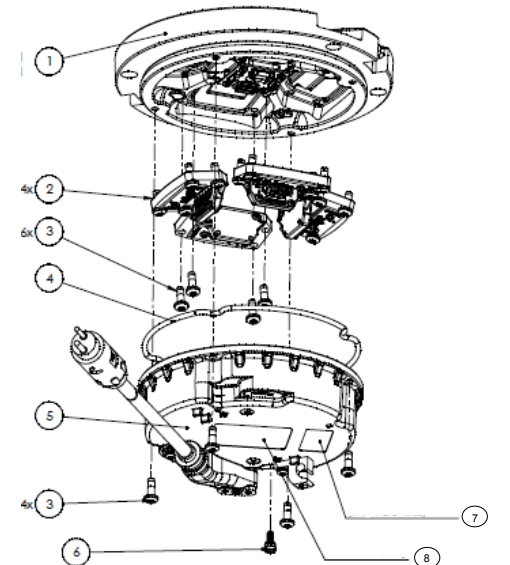
Table 4: Legend Exploded View

Call-out number	Description	Quantity
A	Top cover	1 pc
B	Isolation board	1 pc
C	Connection board	1 pc
D	Screw M3x8 DIN7985-T-A2	4 pcs
E	Prism	4 pcs
F	Holder prism	4 pcs
G	Screw M4 x6	16 pcs
H	LED board	4 pcs
I	Screw M3x8 DIN7985-T-A2	4 pcs
J	Protection prism plate	16 pcs
K	Gasket	4 pc

**Table 5: Exploded View, Omnidirectional Light, 4 prisms, 12-inch**

	Call-out number)	Description	Part Number (Quantity)
<b>Figure 48: Omnidirectional Light, 4 prisms, 12-inch</b>	1)	Top Cover Assembly, 12-Inch Omni	SP.AS00188-00S (1 pc)
	2)	Light Engine Assembly, Omni 12-Inch / 8-Inch (4 p)	SP.AS00143-XXXX (4 pcs)
	3)	M5 x 8 x 14 PAN A2 6 LOBE LP DIN 7985	MFP M 5PT-714-01 (16 pcs)
	4)	Bottom Pan Gasket, O-ring, 12-Inch	MS00006-000-01 (1 pc)
	5)	Bottom Pan Assembly, 12-Inch	SP.AS00024-XXX (1 pc)
	6)	M6 x 1 x 20 PAN A2 6 LOBE LP DIN 7985	MFP M 6PT-720-01 (4 pcs)
	7)	D-Range Pressure Release Screw	MF00090-000-01 (1 pc)
	8)	O-ring, Silicone, size 008, 1/6W x 3/16ID	MS00001-008-01 (1 pc)
	9)	Power supply label (if applicable)	
	10)	Product label	

**Table 6: Exploded View, Omnidirectional Light, 4 prisms, 8-inch**

	Call-out number)	Description	Part Number (Quantity)
<b>Figure 49: Omnidirectional Light, 4 prisms, 8-inch</b>	1)	Top Cover Assembly, 8-Inch Omni	SP.AS00187-00S (1 pc)
	2)	Light Engine Assembly, Omni 12-Inch / 8-Inch (4 p)	SP.AS00143-XXXX (4 pcs)
	3)	M5 x 8 x 14 PAN A2 6 LOBE LP DIN 7985	MFP M 5PT-714-01 (16 pcs)
	4)	Bottom Pan Gasket, O-ring, 8-Inch	MS00005-000-01 (1 pc)
	5)	Bottom Pan Assembly, 8-Inch	SP.AS00021-XXX (1 pc)
	6)	M5 x 8 x 14 PAN A2 6 LOBE LP DIN 7985	MFP M 5PT-714-01 (4 pcs)
	7)	Power supply label (if applicable)	
	8)	Product label	

## 9.2 L-852T(L) Taxiway Edge, 12-inch and 8-inch



### Note

- Each top cover and bottom pan assembly includes a gasket and screws for the bottom pan.
- Each light engine and heater kit assembly includes mounting screws.
- Each prism kit includes prism, gasket, protection plate (if applicable) and mounting screws.
- BAP stands for "buy American preference".

Top cover assemblies	Quantity per		Spare part code
	Fitting	Spare part	
12-inch	1	1	SP.AS00187-00S
8-inch	1	1	SP.AS00188-00S

Light engine assemblies <u>without</u> heater	Quantity per		Spare part code
	Fitting	Spare part	
Blue	4	4	SP.AS00143-01BN
Yellow	4	4	SP.AS00143-01YN
Infrared and blue	4	4	SP.AS00143-11BN
Infrared and yellow	4	4	SP.AS00143-11YN

Light engine assemblies <u>with</u> heater	Quantity per		Spare part code
	Fitting	Spare part	
Blue, EQ (R)	4	4	SP.AS00143-01B0
Blue, non-monitored (S) or monitored (M)	4	4	SP.AS00143-01B1
Yellow, EQ (R)	4	4	SP.AS00143-01Y0
Yellow, non-monitored (S) or monitored (M)	4	4	SP.AS00143-01Y1
Infrared and blue, EQ (R)	4	4	SP.AS00143-11B0
Infrared and blue, non-monitored (S) or monitored (M)	4	4	SP.AS00143-11B1
Infrared and yellow, EQ (R)	4	4	SP.AS00143-11Y0
Infrared and yellow, non-monitored (S) or monitored (M)	4	4	SP.AS00143-11Y1

Bottom pan assemblies, 8-inch	Quantity per		Spare part code
	Fitting	Spare part	
Non-monitored converter, style 6 cord set	1	1	SP.AS00021-L13
Non-monitored converter, 3-pole cord set	1	1	SP.AS00021-L1F
Non-monitored converter, style 1 SJO jacketed cord set	1	1	SP.AS00021-L1J
Monitored converter, style 6 cord set	1	1	SP.AS00021-M13
Monitored converter, 3-pole cord set	1	1	SP.AS00021-M1F
Monitored converter, style 1 SJO jacketed cord set	1	1	SP.AS00021-M1J
EQ converter, style 6 cord set	1	1	SP.AS00021-R13
EQ converter, 3-pole cord set	1	1	SP.AS00021-R1F
EQ converter, style 1 SJO jacketed cord set	1	1	SP.AS00021-R1J
BAP non-monitored converter, style 6 cord set	1	1	SP.AS00021-S13
BAP non-monitored converter, style 1 SJO jacketed cord set	1	1	SP.AS00021-S1J

Cord sets	Quantity per		Spare part code
	Fitting	Spare part	
L-823 style 1, 8-inch bottom pan	1 or 2	5	SP.73A0193/1
L-823 style 1, 12-inch bottom pan	1 or 2	5	SP.73A0194/1
L-823 style 6, bottom pan	1 or 2	5	SP.73A0136/18
3-pole, bottom pan	1 or 2	5	SP.SGEFR500160
Cable retaining clamp, for style 1 cord set	1 or 2	5	SP.MB00003-013-01
Ground lug kit	1	5	SP.72A0401
Grounding kit style 6 (bolt & washer)	1 or 2	100	SP00102-100-01

Prism kit	Quantity per		Spare part code
	Fitting	Spare part	
Prism kits	4	4	SP.4072.78.021
Prism gaskets	4	10	SP.4072.78.030

Heater kit assemblies	Quantity per		Spare part code
	Fitting	Spare part	
Heater kit for power supply, BAP non-monitored and EQ (R)	2	2	SP.EP00077-P00-01
Heater kit for power supply, non-monitored (S) or monitored (M)	2	2	SP.EP00077-P01-01

Screws and gaskets	Quantity per		Spare part code
	Fitting	Spare part	
Gasket between bottom pan and top cover, 8-inch	1	10	SP.MS00005-000-01
Screws to fix bottom pan to top cover 8-inch and to fix light engine	4	100	SP.MFPM5PT-714-01
Gasket between bottom pan and top cover, 12-inch	1	10	SP.MS00006-000-01
Screws to fix bottom pan to top cover 12-inch	4	100	SP.MFPM6PT-720-01

Ground lug kit	Quantity per		Spare part code
	Fitting	Spare part	
Ground lug kit	1	5	SP.72A0401

Pressure release screw	Quantity per		Spare part code
	Fitting	Spare part	
Pressure release screw with O-ring	1	5	SP.MF00090-000-01

Wire harness	Quantity per		Spare part code
	Fitting	Spare part	
Wire harness, power supply to junction board for 8-inch fixtures	1	4	SP.EW00070-150-01
Wire harness, power supply to junction board for 12-inch fixtures	1	4	SP.EW00070-300-01
Wire harness, light engine to junction board	4	8	SP.6100.50.300

Fuse resistors - only for fixtures with monitoring (M)	Quantity per		Spare part code
	Fitting	Spare part	
For use with legacy converters	1 or 2	20	SP.6132.00.250
For use with new style mon converters	1 or 2	20	SP.EZ00015-000-01

## 9.3 Protected Runway Edge, Medium Intensity, 8-inch



### Note

- Each top cover and bottom pan assembly includes a gasket and screws for the bottom pan.
- Each light engine and heater kit assembly includes mounting screws.
- Each prism kit includes prism, gasket, protection plate (if applicable) and mounting screws.
- BAP stands for "buy American preference".

Top cover assemblies, 8-inch	Quantity per		Spare part code
	Fitting	Spare part	
8-inch		1	SP.AS00187-00S
Light engine assemblies without heater	Quantity per		Spare part code
	Fitting	Spare part	
OMNI 4P LED kit ME-White	4	4	SP00014-WHT-01
Bottom pan assemblies, 8-inch	Quantity per		Spare part code
	Fitting	Spare part	
non-monitored converter, 1-connector style 6 cord set	1	1	SP.AS00021-L13
monitored converter, 1-connector style 6 cord set	1	1	SP.AS00021-M13
EQ converter, 1-connector style 6 cord set	1	1	SP.AS00021-R13
Cord sets	Quantity per		Spare part code
	Fitting	Spare part	
Cord set, L-823 style 6, 8" & 12" bottom pan	1 or 2	5	SP.73A0136/18
Cable retaining clamp, for use with style 1 cord set	1 or 2	5	SP.MB00003-013-01
Grounding Kit Style 6 (Bolt and washer)	1 or 2	100	SP00102-100-01
Prism spares	Quantity per		Spare part code
	Fitting	Spare part	
Prism Kit (including prism, prism gasket, protection plate and mounting screws)	4	4	SP.4072.78.021
Prism Gasket	4	10	SP.4072.78.030
Wire harnesses	Quantity per		Spare part code
	Fitting	Spare part	
Wire Harness, power supply to Junction Board for 8" fixtures	1	4	SP.EW00070-150-01
Wire Harness, light engine to Junction Board	4	8	SP.6100.50.300
Screws and gaskets	Quantity per		Spare part code
	Fitting	Spare part	
Gasket between Bottom Pan and Top Cover, 8"	1	10	SP.MS00005-000-01
Screws to fix Bottom Pan to top cover 8" & to fix Light Engine	4	100	SP.MFPM5PT-714-01
Pressure release screw with O-ring	1	5	SP.MF00090-000-01
Fuse	Quantity per		Spare part code
	Fitting	Spare part	
<b>Old</b> fuse resistor spare part kit (only for fixtures with monitoring (M))	2	20	SP.6132.00.250
<b>New</b> fuse resistor spare part kit (only for fixtures with monitoring (M))	2	20	SP.EZ00015-000-01

## 9.4 Protected Apron Maneuvering Guidance, 8-inch



### Note

- Each top cover and bottom pan assembly includes a gasket and screws for the bottom pan.
- Each light engine and heater kit assembly includes mounting screws.
- Each prism kit includes prism, gasket, protection plate (if applicable) and mounting screws.
- BAP stands for "buy American preference".

Top cover assemblies	Quantity per		Spare part code
	Fitting	Spare part	
8-inch	1	1	SP.AS00187-00S
12-inch	1	1	SP.AS00188-00S

Light engine assemblies <u>without</u> heater	Quantity per		Spare part code
	Fitting	Spare part	
Yellow	4	4	SP.AS00143-01YN
Infrared and blue	4	4	SP.AS00143-11BN
Infrared and yellow	4	4	SP.AS00143-11YN

Light engine assemblies <u>with</u> heater	Quantity per		Spare part code
	Fitting	Spare part	
Yellow, EQ (R)	4	4	SP.AS00143-01Y0
Yellow, non-monitored (S) or monitored (M)	4	4	SP.AS00143-01Y1
Infrared and blue, EQ (R)	4	4	SP.AS00143-11B0
Infrared and blue, non-monitored (S) or monitored (M)	4	4	SP.AS00143-11B1
Infrared and yellow, EQ (R)	4	4	SP.AS00143-11Y0
Infrared and yellow, non-monitored (S) or monitored (M)	4	4	SP.AS00143-11Y1

Bottom pan assemblies	Quantity per		Spare part code
	Fitting	Spare part	
Non-monitored converter, 1-connector style 6 cord set	1	1	SP.AS00021-L13
Non-monitored converter, 1-connector 3-pole cord set	1	1	SP.AS00021-L1F
Non-monitored converter, 1-connector style 1 SJO jacketed cord set	1	1	SP.AS00021-L1J
Monitored converter, 1-connector style 6 cord set	1	1	SP.AS00021-M13
Monitored converter, 1-connector 3-pole cord set	1	1	SP.AS00021-M1F
Monitored converter, 1-connector style 1 SJO jacketed cord set	1	1	SP.AS00021-M1J
EQ converter, 1-connector style 6 cord set	1	1	SP.AS00021-R13
EQ converter, 1-connector 3-pole cord set	1	1	SP.AS00021-R1F
EQ converter, 1-connector style 1 SJO jacketed cord set	1	1	SP.AS00021-R1J
Buy American preference non-monitored converter, 1-connector style 6 cord set	1	1	SP.AS00021-S13
Buy American preference non-monitored converter, 1-connector style 1 SJO jacketed cord set	1	1	SP.AS00021-S1J

Cordsets	Quantity per		Spare part code
	Fitting	Spare part	
Cord set kit, L-823 style 1, 8-inch bottom pan	1 or 2	5	SP.73A0193/1
Cord set kit, L-823 style 1, 12-inch bottom pan	1 or 2	5	SP.73A0194/1
Cord set, L-823 style 6, 8-inch and 12-inch bottom pan	1 or 2	5	SP.73A0136/18
Cord set, 3-pole, 8-inch and 12-inch bottom pan	1 or 2	5	SP.SGFR500160
Cable retaining clamp, for use with style 1 cord set	1 or 2	5	SP.MB00003-013-01
Grounding kit style 6 (bolt and washer)	1 or 2	100	SP00102-100-01

Prism kit	Quantity per		Spare part code
	Fitting	Spare part	
Prism kit	4	4	SP.4072.78.021

Prism gasket	Quantity per		Spare part code
	Fitting	Spare part	
Prism gasket	4	10	SP.4072.78.030

Heater kit assemblies	Quantity per		Spare part code
	Fitting	Spare part	
Heater kit for power supply, BAP non-monitored and EQ (R)	2	2	SP.EP00077-P00-01
Heater kit for power supply, non-monitored (S) or monitored (M)	2	2	SP.EP00077-P01-01

Screws and gaskets	Quantity per		Spare part code
	Fitting	Spare part	
Gasket between bottom pan and top cover, 8-inch	1	10	SP.MS00005-000-01
Screws to fix bottom pan to top cover 8-inch and to fix Light Engine	4	100	SP.MFPM5PT-714-01
Gasket between bottom pan and top cover, 12-inch	1	10	SP.MS00006-000-01
Screws to fix bottom pan to top cover 12-inch	4	100	SP.MFPM6PT-720-01

Ground lug kit	Quantity per		Spare part code
	Fitting	Spare part	
Ground lug kit	1	5	SP.72A0401

Pressure release screw	Quantity per		Spare part code
	Fitting	Spare part	
Pressure release screw with O-ring	1	5	SP.MF00090-000-01

Wire harness	Quantity per		Spare part code
	Fitting	Spare part	
Wire harness, power supply to junction board for 8-inch fixtures	1	4	SP.EW00070-150-01
Wire harness, power supply to junction board for 12-inch fixtures	1	4	SP.EW00070-300-01
Wire harness, light engine to junction board	4	8	SP.6100.50.300

Fuse resistors - only for fixtures with monitoring (M)	Quantity per		Spare part code
	Fitting	Spare part	
For use with legacy converters	1 or 2	20	SP.6132.00.250
For use with new style mon converters	1 or 2	20	SP.EZ00015-000-01

## 9.5 L-852E(L) Taxiway Intersection, 12-inch and 8-inch



### Note

- Each top cover and bottom pan assembly includes a gasket and screws for the bottom pan.
- Each light engine and heater kit assembly includes mounting screws.
- Each prism kit includes prism, gasket, protection plate (if applicable) and mounting screws.
- BAP stands for "buy American preference".

Top cover assemblies	Quantity per		Spare part code
	Fitting	Spare part	
8-inch	1	1	SP.AS00187-00S
12-inch	1	1	SP.AS00188-00S

Light engine assemblies <u>without</u> heater	Quantity per		Spare part code
	Fitting	Spare part	
Yellow	4	4	SP.AS00143-01YN

Light engine assemblies <u>with</u> heater	Quantity per		Spare part code
	Fitting	Spare part	
Yellow, EQ (R)	4	4	SP.AS00143-01Y0
Yellow, non-monitored (S) or monitored (M)	4	4	SP.AS00143-01Y1

Bottom pan assemblies	Quantity per		Spare part code
	Fitting	Spare part	
Non-monitored converter, 1-connector style 6 cord set	1	1	SP.AS00021-L13
Non-monitored converter, 1-connector 3-pole cord set	1	1	SP.AS00021-L1F
Non-monitored converter, 1-connector style 1 SJO jacketed cord set	1	1	SP.AS00021-L1J
Monitored converter, 1-connector style 6 cord set	1	1	SP.AS00021-M13
Monitored converter, 1-connector 3-pole cord set	1	1	SP.AS00021-M1F
Monitored converter, 1-connector style 1 SJO jacketed cord set	1	1	SP.AS00021-M1J
EQ converter, 1-connector style 6 cord set	1	1	SP.AS00021-R13
EQ converter, 1-connector 3-pole cord set	1	1	SP.AS00021-R1F
EQ converter, 1-connector style 1 SJO jacketed cord set	1	1	SP.AS00021-R1J
Buy American preference non-monitored converter, 1-connector style 6 cord set	1	1	SP.AS00021-S13
Buy American preference non-monitored converter, 1-connector style 1 SJO jacketed cord set	1	1	SP.AS00021-S1J

Cordsets	Quantity per		Spare part code
	Fitting	Spare part	
Cord set kit, L-823 style 1, 8-inch bottom pan	1 or 2	5	SP.73A0193/1
Cord set kit, L-823 style 1, 12-inch bottom pan	1 or 2	5	SP.73A0194/1
Cord set, L-823 style 6, 8-inch and 12-inch bottom pan	1 or 2	5	SP.73A0136/18
Cord set, 3-pole, 8-inch and 12-inch bottom pan	1 or 2	5	SP.SGEFR500160
Cable retaining clamp, for use with style 1 cord set	1 or 2	5	SP.MB00003-013-01
Grounding kit style 6 (bolt and washer)	1 or 2	100	SP00102-100-01

Prism kit	Quantity per		Spare part code
	Fitting	Spare part	
Prism kit	4	4	SP.4072.78.021
Prism gasket	Quantity per		Spare part code
	Fitting	Spare part	
Prism gasket	4	10	SP.4072.78.030
Heater kit assemblies	Quantity per		Spare part code
	Fitting	Spare part	
Heater kit for power supply, BAP non-monitored and EQ (R)	2	2	SP.EP00077-P00-01
Heater kit for power supply, non-monitored (S) or monitored (M)	2	2	SP.EP00077-P01-01
Screws and gaskets	Quantity per		Spare part code
	Fitting	Spare part	
Gasket between bottom pan and top cover, 8-inch	1	10	SP.MS00005-000-01
Screws to fix bottom pan to top cover 8-inch and to fix Light Engine	4	100	SP.MFPM5PT-714-01
Gasket between bottom pan and top cover, 12-inch	1	10	SP.MS00006-000-01
Screws to fix bottom pan to top cover 12-inch	4	100	SP.MFPM6PT-720-01
Ground lug kit	Quantity per		Spare part code
	Fitting	Spare part	
Ground lug kit	1	5	SP.72A0401
Pressure release screw	Quantity per		Spare part code
	Fitting	Spare part	
Pressure release screw with O-ring	1	5	SP.MF00090-000-01
Wire harness	Quantity per		Spare part code
	Fitting	Spare part	
Wire harness, power supply to junction board for 8-inch fixtures	1	4	SP.EW00070-150-01
Wire harness, power supply to junction board for 12-inch fixtures	1	4	SP.EW00070-300-01
Wire harness, light engine to junction board	4	8	SP.6100.50.300
Fuse resistors - only for fixtures with monitoring (M)	Quantity per		Spare part code
	Fitting	Spare part	
For use with legacy converters	1 or 2	20	SP.6132.00.250
For use with new style mon converters	1 or 2	20	SP.EZ00015-000-01



## 10.0 POWER TABLES

### L-852T(L) Taxiway Edge

#### 8- and 12-inch light fixtures without arctic kit (heater)

Fixture type - 1 cord set <sup>1</sup>	Fixture load	Isolation transformer		CCR load
		Wattage	Load	
Taxiway Edge, L-852(T), omnidirectional	9.6 VA	15 W	5.1 VA	14.7 VA

#### 8- and 12-inch light fixtures with arctic kit (heater)

Fixture type - 1 cord set <sup>1</sup>	Fixture load	Isolation transformer		CCR load
		Wattage	Load	
Taxiway Edge, L-852(T), omnidirectional	75.5 VA	65 W	11.5 VA	87 VA

<sup>1</sup>Values provided are for the "S" option non-monitored power only.

### ICAO Medium Intensity Runway Edge and Approach

#### 8-inch light fixtures without arctic kit (heater)

Fixture type - 1 cord set <sup>1</sup>	Fixture load	Isolation transformer		CCR load
		Wattage	Load	
Runway edge & approach, medium intensity, omnidirectional	9.6 VA	15 W	5.1 VA	14.7 VA

<sup>1</sup>Values provided are for the "S" option non-monitored power only.



### Note

- EQ fixtures:
  - The isolation transformer must have an additional 8 VA available above the fixture load for communication bandwidth. Size transformer to next size up to assure additional 8 VA coverage
  - Legacy BRITE II or AGLAS 2 systems — Order "M" power supply
- Fail-open fixtures:
  - The maximum rating for the isolation transformer is 150 W (a correctly calibrated CCR is important to achieve an accurate fail open response)
- Additional voltage loss not included in the above table which must be factored into the circuit load calculation:
  - Primary cables will result in a higher CCR load
  - Longer secondary cables may result in a larger size isolation transformer requirement
- Efficiency of the isolation transformer depends on the manufacturer of the transformer

## ICAO Apron Maneuvering Guidance

### 8-inch and 12-inch light fixtures without arctic kit (heater)

Fixture type - 1 cord set <sup>1</sup>	Fixture load	Isolation transformer		CCR load
		Wattage	Load	
RS - AM (omnidirectional, inset)	35 VA	45 W	9 VA	44 VA

<sup>1</sup>Values provided are for the "S" option non-monitored power only.

## L-852E(L) Taxiway Intersection

### 8-inch and 12-inch light fixtures without arctic kit (heater)

Fixture type - 1 cord set <sup>1</sup>	Fixture load	Isolation transformer		CCR load
		Wattage	Load	
L-852E(L) Taxiway intersections, omnidirectional	35 VA	45 W	9 VA	44 VA
Taxiway intersections, omnidirectional	35 VA	45 W	9 VA	44 VA

### 8-inch and 12-inch light fixtures with arctic kit (heater)

Fixture type - 1 cord set <sup>1</sup>	Fixture load	Isolation transformer		CCR load
		Wattage	Load	
L-852E(L) Taxiway Intersections, Omnidirectional	65 VA	65 W	10 VA	75 VA
Taxiway intersections, omnidirectional	65 VA	65 W	10 VA	75 VA

<sup>1</sup>Values provided are for the "S" option non-monitored power only.



## Note

- EQ fixtures:
  - The isolation transformer must have an additional 8 VA available above the fixture load for communication bandwidth. Size transformer to next size up to assure additional 8 VA coverage
  - Legacy BRITE II or AGLAS 2 systems — Order "M" power supply
- Fail-open fixtures:
  - The maximum rating for the isolation transformer is 150 W (a correctly calibrated CCR is important to achieve an accurate fail open response)
- Additional voltage loss not included in the above table which must be factored into the circuit load calculation:
  - Primary cables will result in a higher CCR load
  - Longer secondary cables may result in a larger size isolation transformer requirement
- Efficiency of the isolation transformer depends on the manufacturer of the transformer

## Appendix A: Cable Loss

The formula for measuring the cable resistance **R** (in ohms) for a single conductor is calculated with following formula:

$$R = \rho \times (L / A)$$

Where:

- **R** = resistance of the cable (in ohms,  $\Omega$ )
- **$\rho$**  = resistivity of the conductor material (in ohm-meters,  $\Omega \cdot m$ )
- **L** = length of the conductor (in meters, m)
- **A** = cross-sectional area of the conductor (in square meters,  $m^2$ )

**Example:** for 1 km of 2.5 mm<sup>2</sup> copper conductor (where the the resistivity ( $\rho$ ) is 1.72 10<sup>-8</sup> ( $m^2$ ), the resistance R is calculated as follows:

$$(1.72 \cdot 10^{-8}) \times 1000 / (2.5 \cdot 10^{-6} m^2) = 6.88 \text{ ohms}$$

The loss (Watt) is then  $R \times I^2$  or  $6.88 \text{ ohms} \times 6.6^2 A^2 = 299.69 \text{ W/km}$  or  $0.299 \text{ W/m}$ .

The loss (Watt) for a secondary cable with 2 conductors is thus  $2 \times 0.299 = 0.599$  or  $0.6 \text{ W/m}$ .

As such we can calculate:

- Secondary cable for a 2.5 mm<sup>2</sup> Cu-wire (2 conductors):  $0.6 \text{ W/m}$
- Secondary cable for a 4 mm<sup>2</sup> Cu-wire (2 conductors):  $0.4 \text{ W/m}$
- Primary cable for a 6 mm<sup>2</sup> Cu-wire (1 conductor):  $0.12 \text{ W/m}$

The cable between the isolation transformer and the lamp adds losses that cannot be ignored when dimensioning the circuits and selecting rating for secondary transformers and regulators.



### WARNING

Cable lengths should not exceed 100 meters.

For a secondary cable of e.g., 20 m of 2.5 mm<sup>2</sup> CU-wire,  $20 \text{ m} \times 0.6 \text{ W/m} = 12 \text{ W}$  equals the additional loss to be taken into account.

For a primary cable of e.g., 100 m of 6 mm<sup>2</sup> CU-wire,  $100 \text{ m} \times 0.12 \text{ W/m} = 12 \text{ W}$  equals the additional loss to be taken into account.



## Appendix B: INTEROPERABILITY – 12-inch and 8-inch

### Base installation – O-ring selection and retaining bolts 12-inch

The O-ring is required for 12-inch light fixtures. For corresponding 12-inch base, refer to the ordering code in the data sheet.



#### CAUTION

Use of incorrect combination of gaskets, bolts and nuts can cause multiple safety risks and severe damage to product. To obtain a safe and watertight installation, the O-ring and retaining bolt stated in the document must be used. In order to choose the correct gasket, bolts and nuts, you need to know what base the light fixture will be installed in. **Failure to follow these precautions can result in equipment damage and/or aircraft FOD.**

**Table 7: Interoperability matrix – 12-inch**

Base type	Required O-ring	Bolt installation		Stud installation	
		Required dimension	Recommended torque <sup>3</sup>	Required nut	Recommended torque <sup>3</sup>
RELIANCE 12" 150 mm ERNI 12" ED12-190	O-ring D259, 3x5, 7 SP.013114/10pc SP.013115/100pc	1411.20.482 Metric screw kit 12" M10x25 mm	40 Nm+locking washer <sup>2</sup>	1411.20.500 Self-locking nut kit 12" M10xH=100	35 Nm
Thorn 12" 150 mm			40 Nm+locking washer <sup>2</sup>		35 Nm
12" Eurobase			21 Nm + Loctite 2701 or 638		21 Nm <sup>1</sup>
L-868 deep can with flange		1411.20.452 UNC screw kit	reference EB83	NA	NA

1. Do not use Loctite or washer with self-locking nut
2. Max height 2 mm
3. Do not use SO jacketed cord style 1



#### Note

If the use of Loctite is not necessary or obligatory, then it is recommended to use a suitable lubricant when fastening the bolts. Use nickel or graphite grease, but do NOT use copper-based grease as it stimulates corrosion.

## Base installation – O-ring selection and retaining bolts 8-inch



### CAUTION

Use of incorrect combination of gaskets, bolts and nuts can cause multiple safety risks and severe damage to product. To obtain a safe and watertight installation, the O-ring and retaining bolt stated in the document must be used. In order to choose the correct gasket, bolts and nuts, you need to know what base the light fixture will be installed in.

**Failure to follow these precautions can result in equipment damage and/or aircraft FOD.**

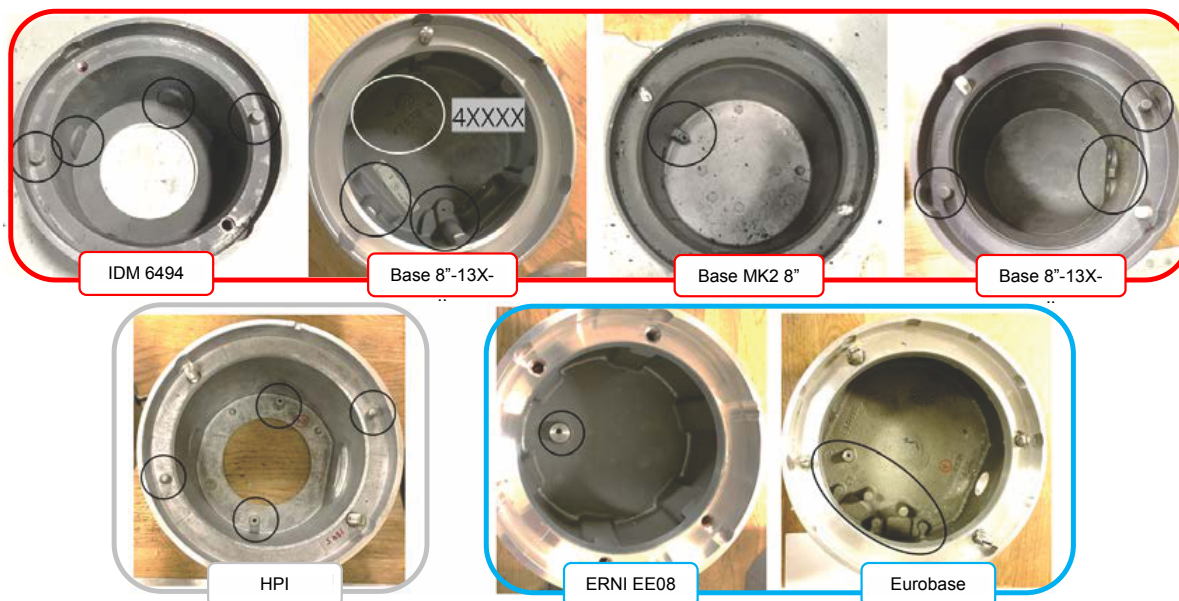
**Table 8: Interoperability matrix – 8-inch**

Base type	Required O-ring	Bolt installation		Stud installation	
		Required dimension	Recommended torque <sup>3</sup>	Required nut	Recommended torque <sup>3</sup>
RELIANCE 8" 135 mm Thorn 8" 100 mm Thorn 8" 133 mm IDM 6494 120 mm Adapter ring SG/Thorn/ID 8"-12"	Red O-Ring SGE.SP24523/10 pc SGE.SP24526/100 pc	1411.20.522 Metric screw kit 8" M10x25mm	40 Nm+locking washer <sup>2</sup>	1411.20.430 Self-locking nut kit 8" M10xH100	35 Nm
ERNI 8" EE08 150 mm ERNI 8" ED08 133 mm	Blue O-Ring SGE.SP24521/10 pc SGE.SP24524/100 pc		21 Nm + Loctite 2701 or 638		
8" Eurobase Adapter ring ADB 8"-12"					
8" HPI	Grey O-Ring SGE.SP24522/10 pc SGE.SP24525/100 pc				

1. Do not use Loctite or washer with self-locking nut
2. Max height 2 mm
3. Do not use SO jacketed cord style 1

The pictures below show photos of the bases mentioned above and the frame shows the color of the intended gasket (o-ring).

Figure 50: Shallow bases





## Appendix C: Snow Plowing Guidelines

### Introduction

ADB SAFEGATE inset light fixtures are engineered with a low protrusion height to minimize the risk of damage during snow plowing, compared to medium or high protrusion alternatives. Select fixtures offer reinforced prisms (see [Reinforced Prisms](#)) or sapphire prisms for increased scratch resistance and extended product lifetime.

Consistent adherence to airport winter operations guidelines is essential to protect in-pavement airfield ground lights from snow plow damage. This manual provides a summary of key airport operator specifications and additional recommendations to help prevent damage to inset lights throughout winter operations.

- FAA AC 150/5200-30D – Airport Winter Safety and Operations
- FAA AC 150/5220-20A – Airport Snow and Ice Control Equipment
- FAA AC 150/5340-26C – Maintenance of Airport Visual Aid Facilities
- FAA EB85 – Ductile Snow Plow Protection Ring and Installation Procedures
- ACRP Report 123 – A Guidebook for Airport Winter Operations

### Winter Operation Training

Many airports conduct dry-run winter operations training ahead of the winter season. To maximize safety and efficiency, we recommend performing tests and simulations on designated sections of taxiways or runways that are equipped with the relevant fittings. This proactive approach helps identify potential issues early, minimizing the risk of damage to airfield luminaires and maintenance vehicles during snow plowing.

### Preparation

You can take some steps before snow or ice removal to make the process easier:

- **Anti-icing chemicals:** Before precipitation forms, use only approved anti-icing chemicals to prevent strong ice bonds and assist with melting. Ensure pH does not exceed 11.
- **Pre-heating:** Switch on in-pavement lights at maximum intensity 30–40 minutes prior to removal. This helps melt snow and ice and reduces fixture damage.

### Snow and Ice Removal Practices

A combination of snow plows, rotary runway brooms, de-icing chemicals and blowers should be used for comprehensive snow and ice removal.

- **Snow plows:**
  - Adjust the blade to maintain a small distance above the pavement surface, minimizing contact with in-pavement lights.
  - Reduce vehicle speed for added protection.

#### Rotary runway brooms:

- Use rotary brooms to remove residual snow from in-pavement light fixtures for a thorough finish.

#### De-icing chemicals:

- Use only approved de-icing chemicals to break down the ice structure, lower its freezing point and cause it to melt. Ensure pH does not exceed 11.

For detailed guidance, see [Snow Plows](#), [Rotary Brooms](#) and [De-Icing Chemicals](#).



### Note

For frequent snow removal, high-strength steel snow plow rings are recommended to better absorb impact and protect aluminum alloy in-pavement lights. For detailed design and installation information, consult FAA Engineering Brief 85.

## Snow Plows

### Cutting edge material and structure:

- Equip snow plows with plastic cutting edges made from polyurethane, rubber, or similar materials.
- Regularly check for wear and abrasion marks; replace worn down plastic immediately. Avoid exposure of metal portions.

**Figure 51: Well-aligned plastic cutting edge**



- Ensure plastic segments are well-aligned and free of vertical or horizontal steps, which increase risk of luminaire damage.

**Figure 52: Signs of wear on plastic cutting edge**



### Cutting edge height:

- Set the plow blade/cutting edge slightly above ground level (10–15 mm clearance) when stationary.

**Figure 53: Cutting edge without clearance**



- Remaining snow/ice should be removed with rotary brooms or approved chemicals.

- Use casters, shoes, or support wheels to maintain clearance during operation; avoid steel wheels and protruding bolts with less than 20 mm clearance.

**Figure 54: Snow plow with support wheels**



### Snow plow angle and speed:

- Limit plow speed to 40 km/h or less; when crossing over in-pavement fixtures, reduce to below 10 km/h or lift blades.
- Maintain movable segment mechanics; adjust and control plow angles per manufacturer recommendations.
- If frequent prism damage occurs, adjust the snow plow swivel angle to better align with the vehicle's driving line.
- Adapt settings to temperature and snow quantity, following supplier recommendations.

### Rotary Brooms

Rotary runway brooms play a vital role in both snow and ice removal, helping to maintain a connected airfield for smarter, data-driven decision making.

- **Snow removal:** Rotary brooms are highly effective at clearing snow from in-pavement light fixtures, often outperforming plow blades in removing the final layers.
- **Ice removal:** The type of broom used is critical. In some cases, brooms may "polish" the ice, which can reduce runway traction. Select broom types carefully for ice removal operations.

### Bristle selection and maintenance:

- Bristles are available in steel or poly varieties.
  - **Steel bristles** cut through ice but can accelerate wear and scratching of glass prisms, impacting light photometry.
  - **Poly bristles** are ideal for flipping or wiping away snow with minimal impact on fixtures.
- To reduce wear and damage, avoid using steel bristles when possible, or use a mix of steel and poly bristles (e.g., one-third steel).
- Always check for adequate contact pressure, especially during pre-winter dry-run tests.
- Inspect bristle wear according to manufacturer recommendations and replace brooms as needed. Worn bristles become stiffer and can significantly increase wear on light fixtures, particularly the prisms.
- Avoid using silica or glass sand. If their use is necessary, remove as soon as operational conditions allow and use rotating brushes at low speed.

### De-Icing Chemicals

In some cases, chemicals may be necessary to remove compacted snow from in-pavement light fixtures. To protect your airfield equipment, we recommend using these solutions sparingly. Excessive chemical application can increase the risk of damage to both the fixtures and underground electrical components, leading to additional maintenance and costs. For best results, ensure that chemical solutions do not exceed a pH value of 11. This precaution helps safeguard your lighting systems and supports dependable, long-term airside operations/

Ensure pH value does not exceed 11 to safeguard lighting systems and minimize additional maintenance.

ADB SAFEGATE light fixtures are tested to work with common airfield chemicals, including:

- Potassium Acetate
- Potassium Formate
- Sodium Acetate
- Sodium Formate

## **Reinforced Prisms**

Using reinforced prisms, such as "sapphire™" prisms available in the AXON range, can significantly extend maintenance intervals. These prisms are approximately four times harder than standard glass, offering increased durability when steel brushes are required. While not scratch-proof, sapphire prisms can help increase service life and reduce maintenance frequency.

## Appendix D: Support

Our experienced engineers are available for support and service at all times, 24 hour/7 days a week. They are part of a dynamic organization making sure the entire ADB SAFEGATE is committed to minimal disturbance for airport operations.

### ADB SAFEGATE Support

#### Technical Support – Global

Customers in Europe, the Middle East, Africa and Asia Pacific are more than welcome to our portal for technical support. Trained in all areas of system issues, troubleshooting, quality control and technical assistance, our highly experienced Technical support specialists are available 24 hours a day, seven days a week to provide assistance over the phone.

Europe: **+32-2-722-17-11**

China: **+86-10-8476-0106**

Middle East and Africa: **+971-4-452-7575**

In the Americas, we also offer live technical support.

#### Live Technical Support – Americas

If at any time you have a question or concern about your product, contact ADB SAFEGATE's US-based technical support specialists, available 24 hours a day, seven days a week, to assist you via phone.

ADB SAFEGATE Americas Technical Service & Support (US & Canada) :**+1-800-545-4157**

ADB SAFEGATE Americas Technical Service & Support (Canada): **+1-905-631-1597**

ADB SAFEGATE Americas Technical Service & Support (International): **+1-614-861-1304**. For technical service press 3 and for sales support press 4.

We can also be reached via email during regular business hours.

Airfield and Gate: **techservice.us@adbsafegate.com**

Gate: **gateservice.us@adbsafegate.com**

We look forward to working with you!

#### Before You Call

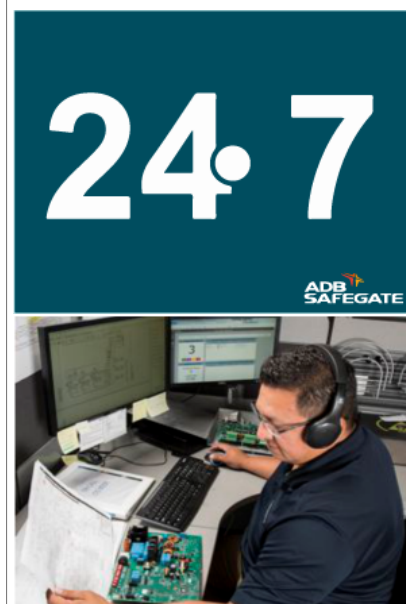
When you have an airfield lighting or control system problem, prior to calling, please ensure the following:

- Review the product's manual and troubleshooting guide.
- Be located with the product ready to troubleshoot.
- Have all necessary information available: airport code/company name, customer id number, contact phone number/email address, product/part number.
- Have all necessary tools that may be needed at hand.

When calling about an issue with Safedock A-VDGS, we can serve you better if you collect the following information before you call:

- Relevant information regarding the issue you are calling about, such as gate number, flight number, aircraft type and time of the event.
- What, if any, actions have been taken to resolve the issue prior to the call.
- If available, provide a CCTV recording of the incident to aid in aligning the information from the Safedock log file.

For more information, see [www.adbsafegate.com](http://www.adbsafegate.com), contact ADB SAFEGATE Support via email at **support@adbsafegate.com**.



## D.1 ADB SAFEGATE Website

The ADB SAFEGATE website, [www.adbsafegate.com](http://www.adbsafegate.com), offers information regarding our airport solutions, products, company, news, links, downloads, references, contacts and more.

## D.2 Recycling

### D.2.1 Local Authority Recycling

The disposal of ADB SAFEGATE products is to be made at an applicable collection point for the recycling of electrical and electronic equipment. The correct disposal of equipment prevents any potential negative consequences for the environment and human health, which could otherwise be caused by inappropriate waste handling. The recycling of materials helps to conserve natural resources. For more detailed information about recycling of products, contact your local authority city office.

### D.2.2 ADB SAFEGATE Recycling

ADB SAFEGATE is fully committed to environmentally-conscious manufacturing with strict monitoring of our own processes as well as supplier components and sub-contractor operations. ADB SAFEGATE offers a recycling program for our products to all customers worldwide, whether or not the products were sold within the European Union (EU).

ADB SAFEGATE products and/or specific electrical and electronic component parts which are fully removed/separated from any customer equipment and returned will be accepted for our recycling program.

All items returned must be clearly labeled as follows:

- For Restriction of Hazardous Substances ( *RoHS*)/Waste Electrical and Electronic Equipment ( *WEEE* ) Recycling
- Sender contact information (Name, Business Address, Phone number).
- Main Unit Serial Number.

ADB SAFEGATE will continue to monitor and update according for any future requirements for *EU directives* as and when *EU member states* implement new *regulations* and or *amendments*. It is our aim to maintain our *compliance plan* and assist our customers.



## Company Addresses

ADB SAFEGATE, Belgium	ADB SAFEGATE BV Leuvensesteenweg 585 B-1930 Zaventem Belgium
Contact:	
Tel.: +32 2 722 17 11	Email: <a href="mailto:marketing@adbsafegate.com">marketing@adbsafegate.com</a>
Fax: +32 2 722 17 64	Internet: <a href="http://www.adbsafegate.com">www.adbsafegate.com</a>
ADB SAFEGATE, Americas	ADB SAFEGATE Americas, LLC 700 Science Blvd Gahanna, OH 43230 USA
Contact:	
Tel.: +1 (614) 861 1304	Email: <a href="mailto:sales.us@adbsafegate.com">sales.us@adbsafegate.com</a>
Fax: +1 (614) 864 2069	Internet: <a href="http://www.adbsafegate.com">www.adbsafegate.com</a>
ADB SAFEGATE, Sweden	ADB SAFEGATE Sweden AB Djurhagegatan 19 SE-213 76 Malmö Sweden
Contact:	
Tel.: +46 (0)40 699 17 00	Email: <a href="mailto:marketing@adbsafegate.com">marketing@adbsafegate.com</a>
Fax: +46 (0)40 699 17 30	Internet: <a href="http://www.adbsafegate.com">www.adbsafegate.com</a>
ADB SAFEGATE, China	ADB SAFEGATE Airfield Technologies Ltd. China Unit 603, D Block, CAMIC International Convention Center, No 3, Hua Jia Di East road, ChaoYang district, Beijing 100102 P.R. China
Contact:	
Tel.: +86 (10) 8476 0106	Email: <a href="mailto:china@safegate.com">china@safegate.com</a>
Fax: +86 (10) 8476 0090	Internet: <a href="http://www.adbsafegate.com">www.adbsafegate.com</a>
ADB SAFEGATE, Germany	ADB SAFEGATE Germany GmbH Konrad-Zuse-Ring 6, D-68163 Mannheim Germany
Contact:	
Tel.: +49 (621) 87 55 76-0	Email: <a href="mailto:marketing@adbsafegate.com">marketing@adbsafegate.com</a>
Fax: +49 (621) 87 55 76-55	Internet: <a href="http://www.adbsafegate.com">www.adbsafegate.com</a>

WWW.ADBSAFEGATE.COM

# Empowering the Airside Evolution

SMARTER. BETTER. NOW.



Copyright ©2016—2026 ADB SAFEGATE, All Rights Reserved