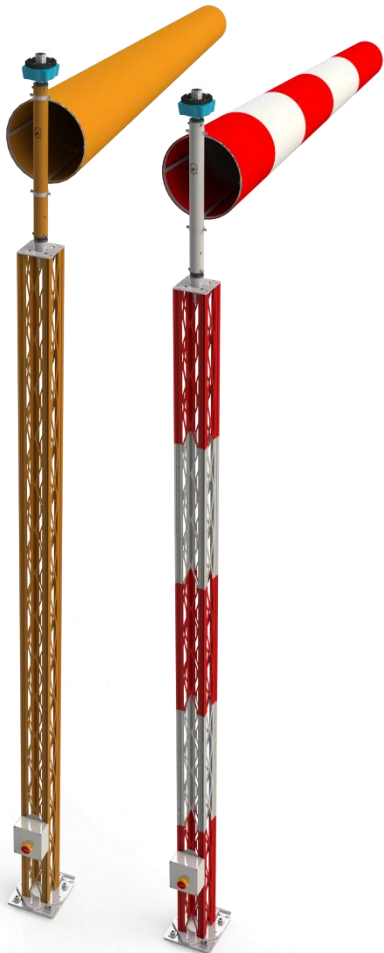


Q-Aviation Lighting / Airfield Lighting / Q-L807 Frangible Wind Direction Indicator

L807 Wind Direction Indicator



TECHNICAL DETAILS

Application:	Frangible mast, Airfield/Runway
Colours:	ICAO Red/White FAA Orange
Lighting styles:	Style I-A: Externally lighted Style I-B: Internally lighted Style II: Unlighted
Windsock size:	Size 1: Ø45 x 250 cm - Ø18" x 8 ft. Size 2: Ø90 x 375 cm - Ø36" x 12 ft
Windsock Material:	Reinforced double stitched Polyester, PU Coated
Windsock frame material:	SS316
Power consumption:	Externally: 50 Watt Internally: 26 Watt Unlighted: n/a
Obstruction Light:	1x L-810, Low intensity
Mast material:	Aluminium, 6063
Mast dimensions:	195 x 195 x 4650 mm
Base:	Tilttable foot, Mounted on concrete. Aluminium Frangible Bolts
Ambient Temp:	-20°C to + 60°C
In Compliance With:	ICAO Annex 14 Vol. I & Vol. II FAA AC150/5345-27E L-807
Life expectancy:	100.000+ hours
System warranty:	24 months
Windsock Warranty:	6 months
IP index:	Externally: IP 65 Internally: IP 66 Unlighted: n/a
Power input options:	100-240Vac 50-60 Hz 2.8-6.6A 24Vdc

DESCRIPTION

The Q-Aviation full frangible L-807 Wind Direction Indicator is a high-end product. The L-807 Wind direction Indicators are usually placed close to a runway or taxiway to indicate to the pilots the wind direction, in order to ensure a safe take-off and taxi. The L-807 comes with a full frangible mast to ensure the safety of the aircraft and passengers in the event of a collision with the wind direction indicator. The L-807 wind direction indicators are in compliance with ICAO annex 14 vol. I & vol. II and FAA AC150/5345-27E L-807 standards.

ORDER CODES - L807 Frangible Wind Direction Indicator

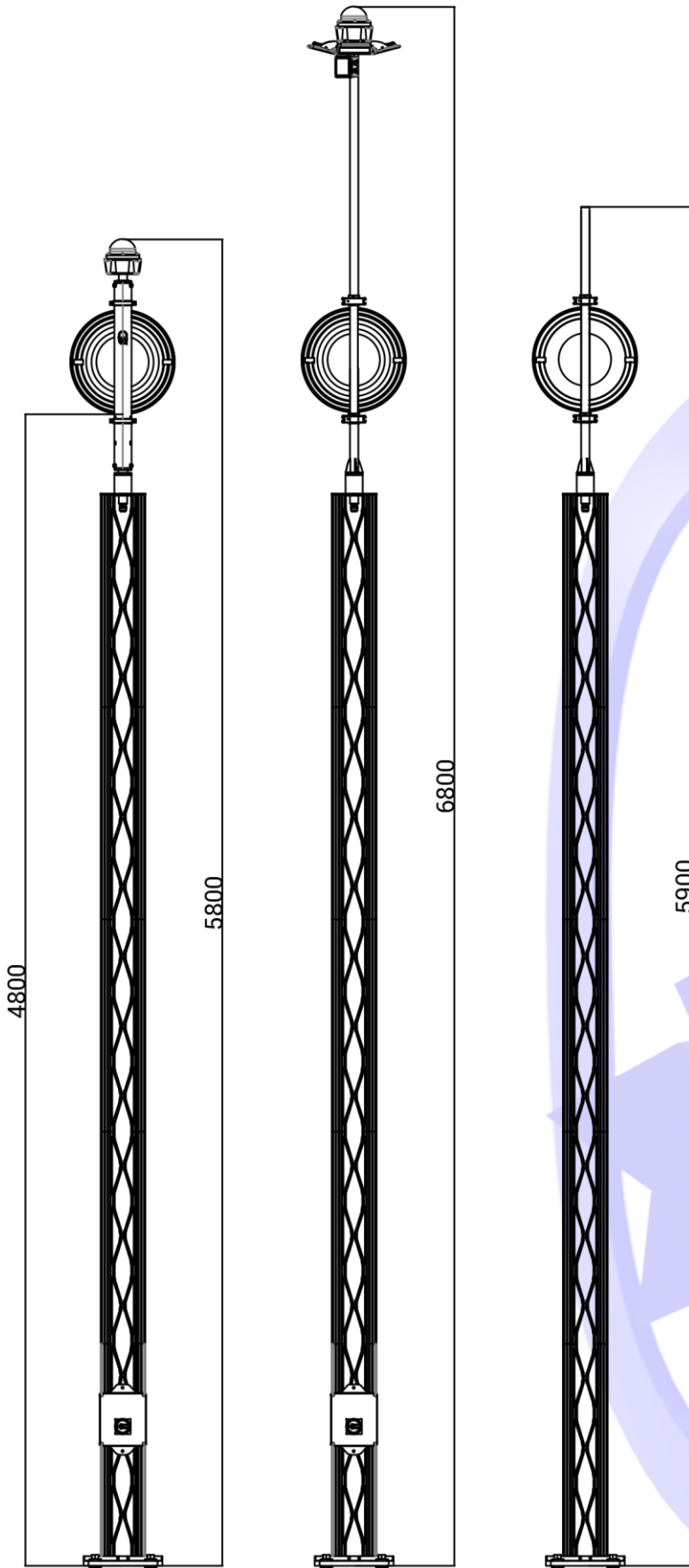
Q23-F807XX - XX - XXX

↓	↓	↓
	IA - Style I-A; Externally Lighted system	024 - 24Vdc Power input
	IB - Style I-B; Internally Lighted system	066 - 2.8 – 6.6A power input
	II - Style II; Unlighted system	230 - 100-240 Vac power input
		000 - No power input, only applicable with unlighted (II) version.

Q23- F807I1 -	L-807 ICAO Wind Direction Indicator with Red/White full frangible mast, Ø45x250 cm red/white striped windsock.
Q23- F807I2 -	L-807 ICAO Wind Direction Indicator with Red/White full frangible mast, Ø90x375 cm red/white striped windsock.
Q23- F807F1 -	L-807 FAA Wind Direction Indicator with Orange full frangible mast, Ø45x250 cm Orange windsock.
Q23- F807F2 -	L-807 FAA Wind Direction Indicator with Orange full frangible mast, Ø90x375 cm Orange windsock.

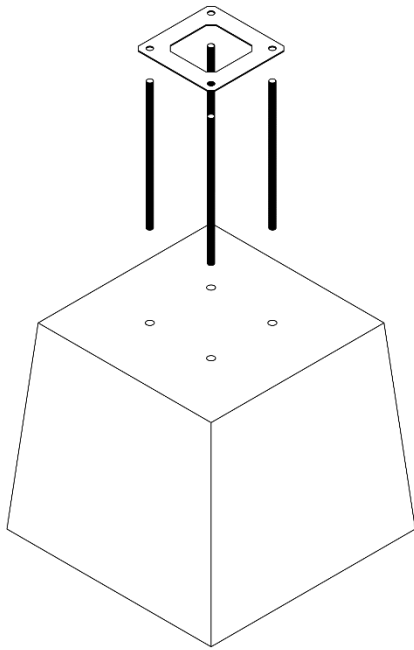
DIMENSIONAL DRAWING

The main dimensions are displayed in the image below.

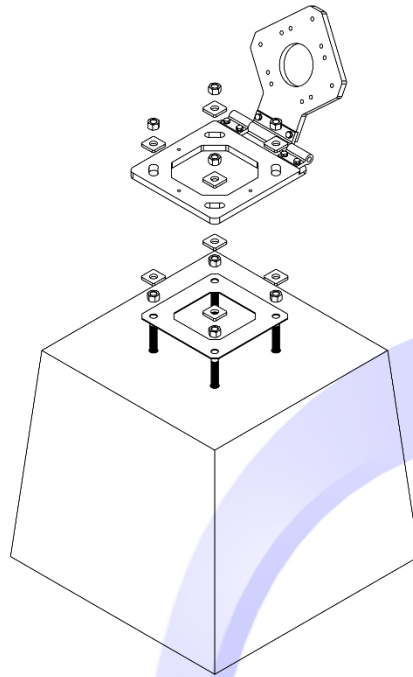


BASE MOUNTING

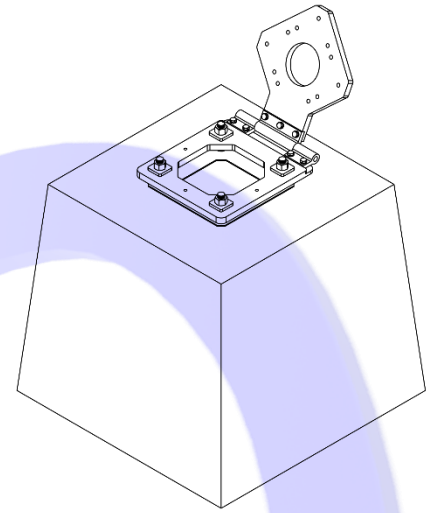
The image below shows the supplied parts for mounting the base.



Before pouring the concrete



Before assembly



Finished base with hinge.