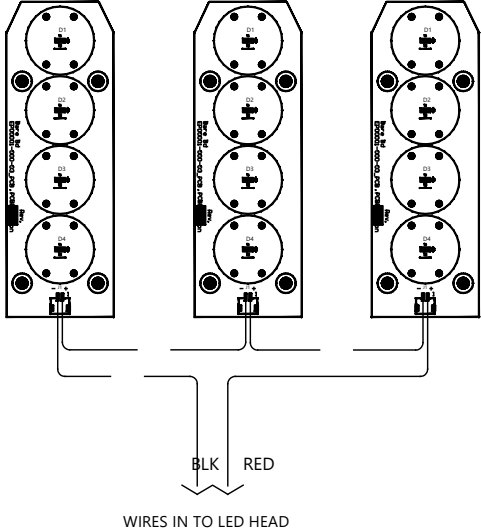
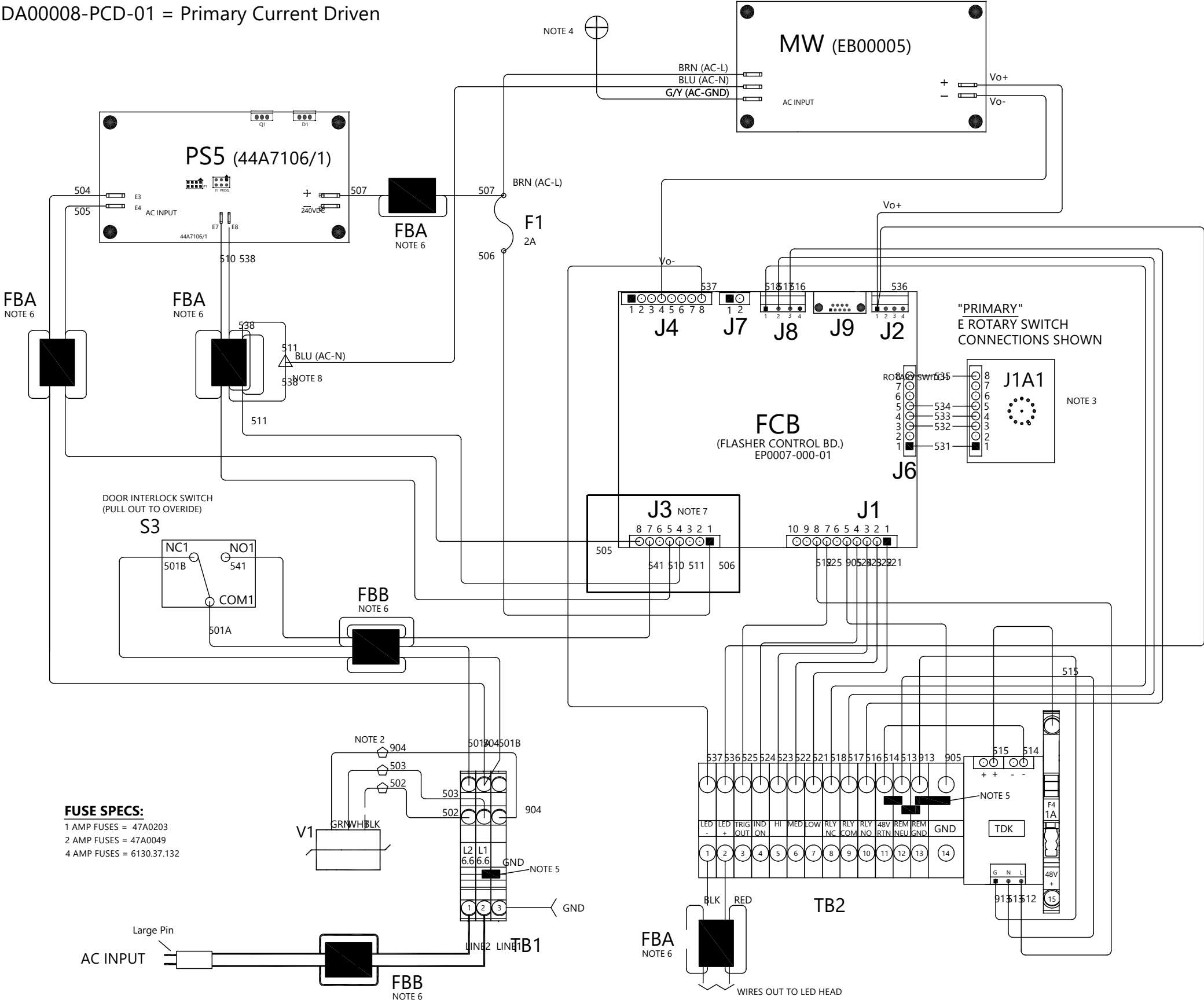
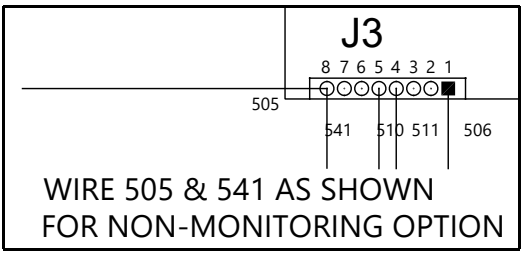


DA00008-PCD-01 = Primary Current Driven

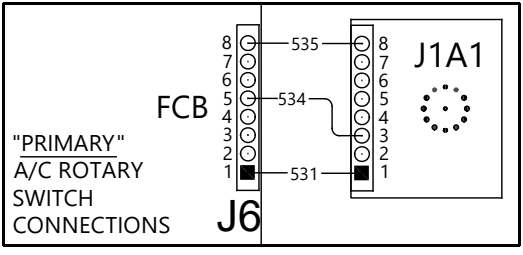


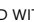
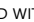
THE LIGHT ENGINES AND WIRES 701A / B ENGINES ARE INCLUDED IN THE AS00007-00-01 ASSEMBLY.

DETAIL "A" (NOTE 7)



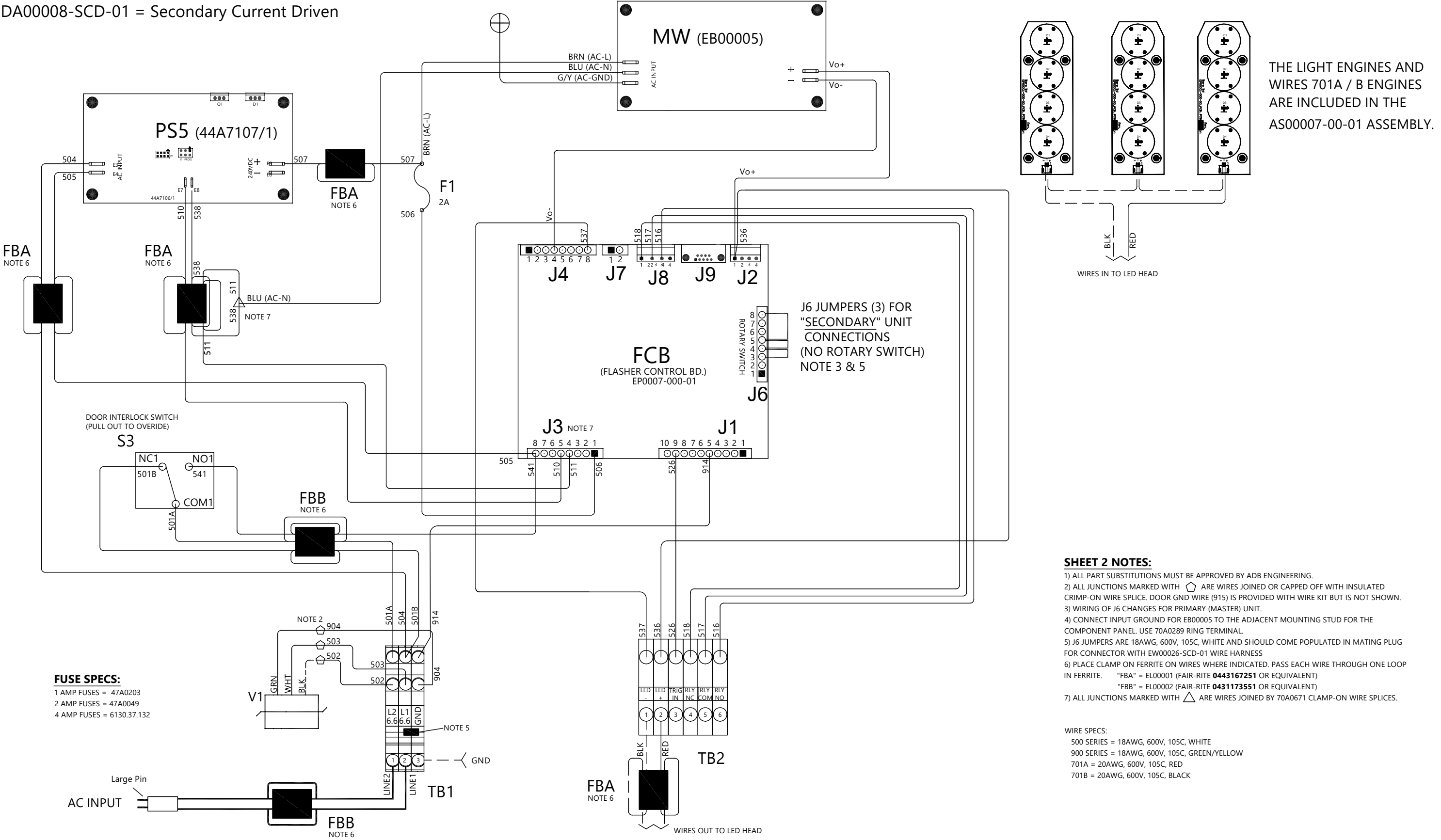
DETAIL "B" (NOTE 3)



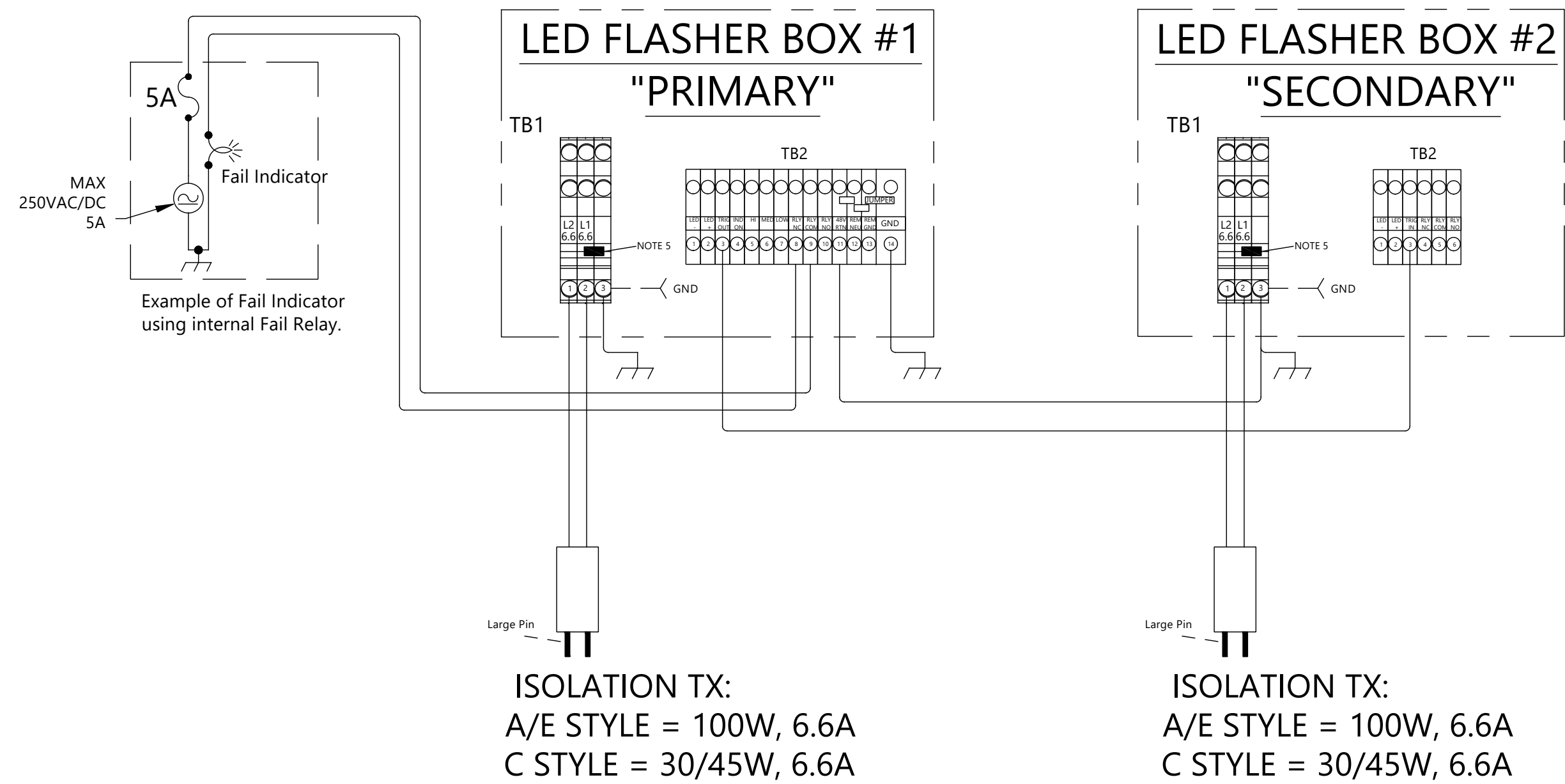
- SHEET 1 NOTES:**
- 1) ALL PART SUBSTITUTIONS MUST BE APPROVED BY ADB ENGINEERING.
  - 2) ALL JUNCTIONS MARKED WITH  ARE WIRES JOINED OR CAPPED OFF WITH INSULATED CRIMP-ON WIRE SPLICE. DOOR GND WIRE (915) IS PROVIDED WITH WIRE KIT BUT IS NOT SHOWN.
  - 3) WIRING OF J6 CHANGES FOR SECONDARY(SLAVE) UNIT. SEE SHEET 2. ROTARY SWITCH CONNECTIONS FOR "A/C" STYLE SHOWN IN DETAIL "B"
  - 4) CONNECT INPUT GROUND FOR EB00005 TO THE ADJACENT MOUNTING STUD FOR THE COMPONENT PANEL. USE 70A0289 RING TERMINAL.
  - 5) USE SUPPLIED JUMPERS TO CONNECT TERMINALS AS SHOWN
  - 6) PLACE CLAMP ON FERRITE ON WIRES WHERE INDICATED. PASS EACH WIRE THROUGH ONE LOOP IN FERRITE. "FBA" = EL00001 (FAIR-RITE **0443167251** OR EQUIVALENT)  
"FBB" = EL00002 (FAIR-RITE **0431173551** OR EQUIVALENT)
  - 7) WIRING OF J3 CHANGES WHEN NON-MONITORING OPTION IS USED. SEE DETAIL "A".
  - 8) ALL JUNCTIONS MARKED WITH  ARE WIRES JOINED BY 70A0671 CLAMP-ON WIRE SPLICES.
- WIRE SPECS:**
- |                                              |                                 |
|----------------------------------------------|---------------------------------|
| 500 SERIES = 18AWG, 600V, 105C, WHITE        | 701A = 20AWG, 600V, 105C, RED   |
| 900 SERIES = 18AWG, 600V, 105C, GREEN/YELLOW | 701B = 20AWG, 600V, 105C, BLACK |

<div>ADB SAFEGATE</div> <div>P.O. Box 30829 977 Gahanna Parkway Columbus, OH 43230</div> <div>Tel: (614) 861-1304 Fax: (614) 864-2069</div>	<p>Information contained on this drawing is to be used expressly in accordance with the purpose for which it was submitted. Any disclosure of this information is strictly prohibited except as ADB SAFEGATE may otherwise agree in writing. Copyright © 2017 ADB SAFEGATE.</p>	<div>CONTROLLED COPY</div> <div>Unauthorized duplication of this document in whole or part is prohibited. Initialed in RED ink below indicates authorized copy.</div> <div>INITIAL &amp; DATE:</div>	REV LEVEL	ECO NUMBER	REVISION HISTORY DESCRIPTIONS	DRAWN BY	REV DATE	DRAWING TITLE:  WIRING DIAGRAM, L-849, A/E & C L.E.D RUNWAY END IDENTIFICATION LIGHT (REIL) INTERNAL WIRE CONNECTIONS	DRAWN BY: TRAVIS RAY MARRIOTT  DRAWN DATE: 30 MAY 2019  DRAWING NUMBER:  DA00008-XXX-01	ASSOCIATED DRAWINGS: EW00026-XXX-01 EP00007-000-01 AS00007-000-01	SCALE: N/A  SHEET NUMBER: 1 OF 6  REV.  G
			----	----							
			G	ECP1220		NRJ	02FEB24				
			F	INC560		TM	03MAR21				
			E	INC473		TM	21AUG20				

DA00008-SCD-01 = Secondary Current Driven



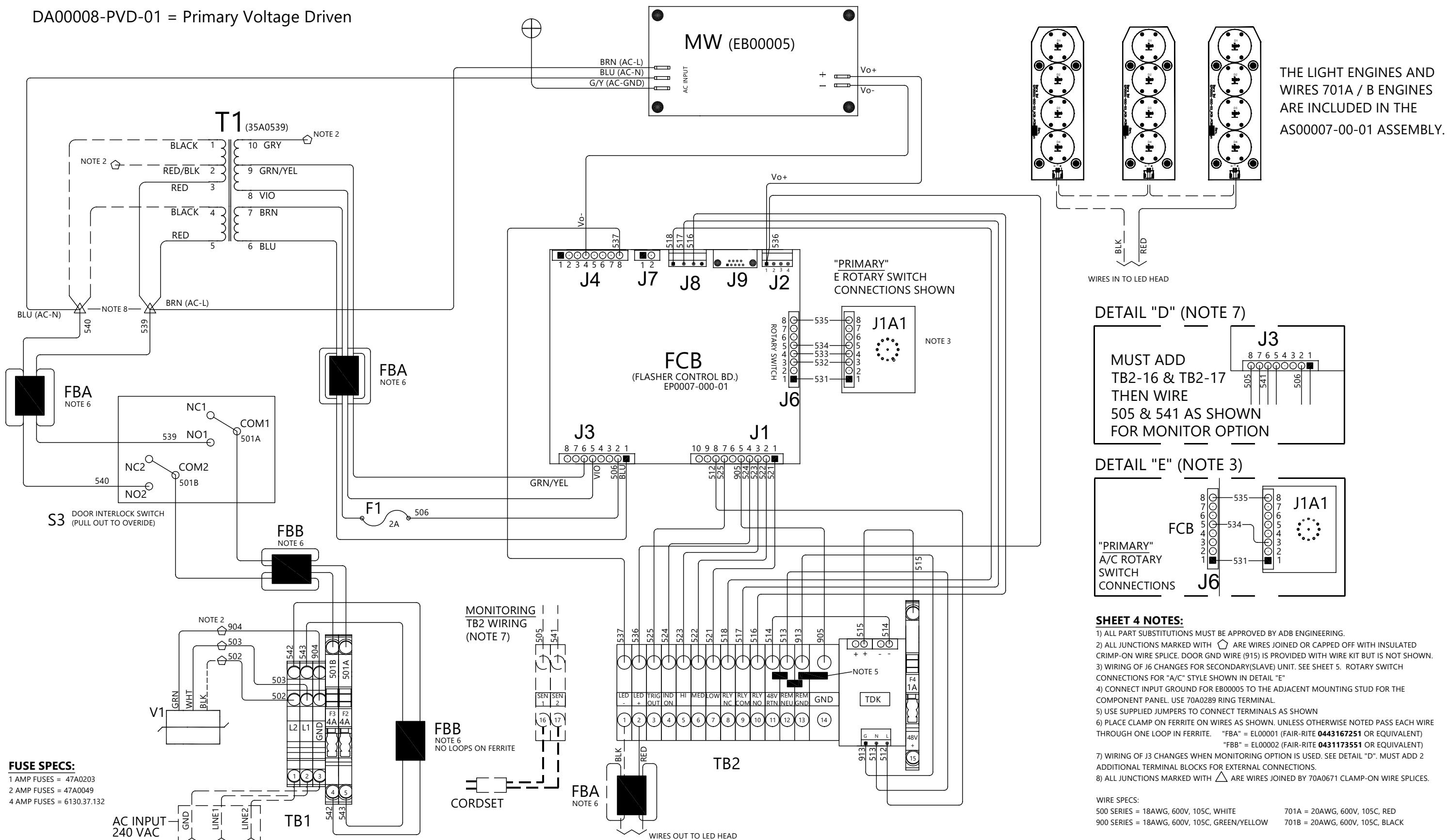
<div><div><div><div></div><div>ADB</div></div><div><div>SAFEGATE</div></div></div></div> <div><div>P.O. Box 30829</div><div>Tel: (614) 861-1304</div><div>977 Gahanna Parkway</div><div>Fax: (614) 864-2069</div><div>Columbus, OH 43230</div></div> <tr><td colspan="2">Information contained on this drawing is to be used expressly in accordance with the purpose for which it was submitted. Any disclosure of this information is strictly prohibited except as ADB SAFEGATE may otherwise agree in writing. Copyright © 2017 ADB SAFEGATE.</td></tr> <tr><td colspan="2"><div>CONTROLLED COPY</div><div>Unauthorized duplication of this document in whole or part is prohibited. Initialed in RED ink below indicates authorized copy.</div><div>INITIAL &amp; DATE:</div></td></tr> <tr><td>REV LEVEL</td><td>ECO NUMBER</td><td>REVISION HISTORY DESCRIPTIONS</td><td>DRAWN BY</td><td>REV DATE</td></tr> <tr><td></td><td>----</td><td></td><td></td><td></td></tr> <tr><td>G</td><td>ECP1220</td><td>Update ferrite ID (sht 1,2,4,5) and line 914 (sht 2)</td><td>NRJ</td><td>02FEB24</td></tr> <tr><td>F</td><td>INC560</td><td>Updates to the input wiring</td><td>TM</td><td>03MAR21</td></tr> <tr><td>E</td><td>INC473</td><td>Updated from first build notes</td><td>TM</td><td>21AUG20</td></tr> <tr><td colspan="5">DRAWING TITLE:</td></tr> <tr><td colspan="5">WIRING DIAGRAM, L-849, A/E &amp; C L.E.D RUNWAY END IDENTIFICATION LIGHT (REIL) INTERNAL WIRE CONNECTIONS</td></tr> <tr><td colspan="2">DRAWN BY: TRAVIS RAY MARRIOTT</td><td colspan="3">ASSOCIATED DRAWINGS: EW00026-XXX-01 EP00007-000-01 AS00007-000-01</td></tr> <tr><td colspan="2">DRAWN DATE: 30 MAY 2019</td><td colspan="3">SCALE: N/A SHEET NUMBER: 2 OF 6</td></tr> <tr><td colspan="2">DRAWING NUMBER: DA00008-XXX-01</td><td colspan="3">REV. G</td></tr>	Information contained on this drawing is to be used expressly in accordance with the purpose for which it was submitted. Any disclosure of this information is strictly prohibited except as ADB SAFEGATE may otherwise agree in writing. Copyright © 2017 ADB SAFEGATE.		<div>CONTROLLED COPY</div> <div>Unauthorized duplication of this document in whole or part is prohibited. Initialed in RED ink below indicates authorized copy.</div> <div>INITIAL &amp; DATE:</div>		REV LEVEL	ECO NUMBER	REVISION HISTORY DESCRIPTIONS	DRAWN BY	REV DATE		----				G	ECP1220	Update ferrite ID (sht 1,2,4,5) and line 914 (sht 2)	NRJ	02FEB24	F	INC560	Updates to the input wiring	TM	03MAR21	E	INC473	Updated from first build notes	TM	21AUG20	DRAWING TITLE:					WIRING DIAGRAM, L-849, A/E & C L.E.D RUNWAY END IDENTIFICATION LIGHT (REIL) INTERNAL WIRE CONNECTIONS					DRAWN BY: TRAVIS RAY MARRIOTT		ASSOCIATED DRAWINGS: EW00026-XXX-01 EP00007-000-01 AS00007-000-01			DRAWN DATE: 30 MAY 2019		SCALE: N/A SHEET NUMBER: 2 OF 6			DRAWING NUMBER: DA00008-XXX-01		REV. G		
	Information contained on this drawing is to be used expressly in accordance with the purpose for which it was submitted. Any disclosure of this information is strictly prohibited except as ADB SAFEGATE may otherwise agree in writing. Copyright © 2017 ADB SAFEGATE.																																																					
	<div>CONTROLLED COPY</div> <div>Unauthorized duplication of this document in whole or part is prohibited. Initialed in RED ink below indicates authorized copy.</div> <div>INITIAL &amp; DATE:</div>																																																					
	REV LEVEL	ECO NUMBER	REVISION HISTORY DESCRIPTIONS	DRAWN BY	REV DATE																																																	
		----																																																				
G	ECP1220	Update ferrite ID (sht 1,2,4,5) and line 914 (sht 2)	NRJ	02FEB24																																																		
F	INC560	Updates to the input wiring	TM	03MAR21																																																		
E	INC473	Updated from first build notes	TM	21AUG20																																																		
DRAWING TITLE:																																																						
WIRING DIAGRAM, L-849, A/E & C L.E.D RUNWAY END IDENTIFICATION LIGHT (REIL) INTERNAL WIRE CONNECTIONS																																																						
DRAWN BY: TRAVIS RAY MARRIOTT		ASSOCIATED DRAWINGS: EW00026-XXX-01 EP00007-000-01 AS00007-000-01																																																				
DRAWN DATE: 30 MAY 2019		SCALE: N/A SHEET NUMBER: 2 OF 6																																																				
DRAWING NUMBER: DA00008-XXX-01		REV. G																																																				



**SHEET 3 NOTES:**

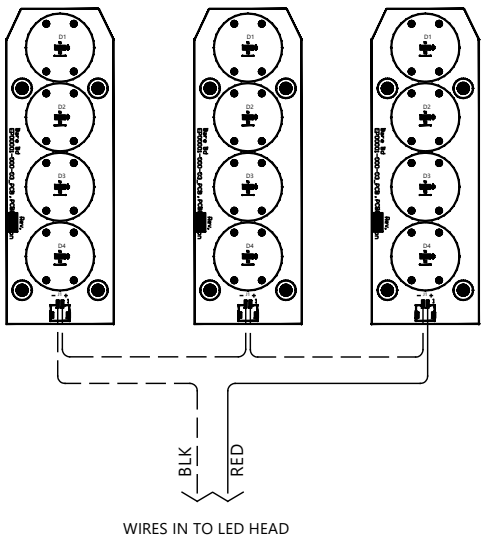
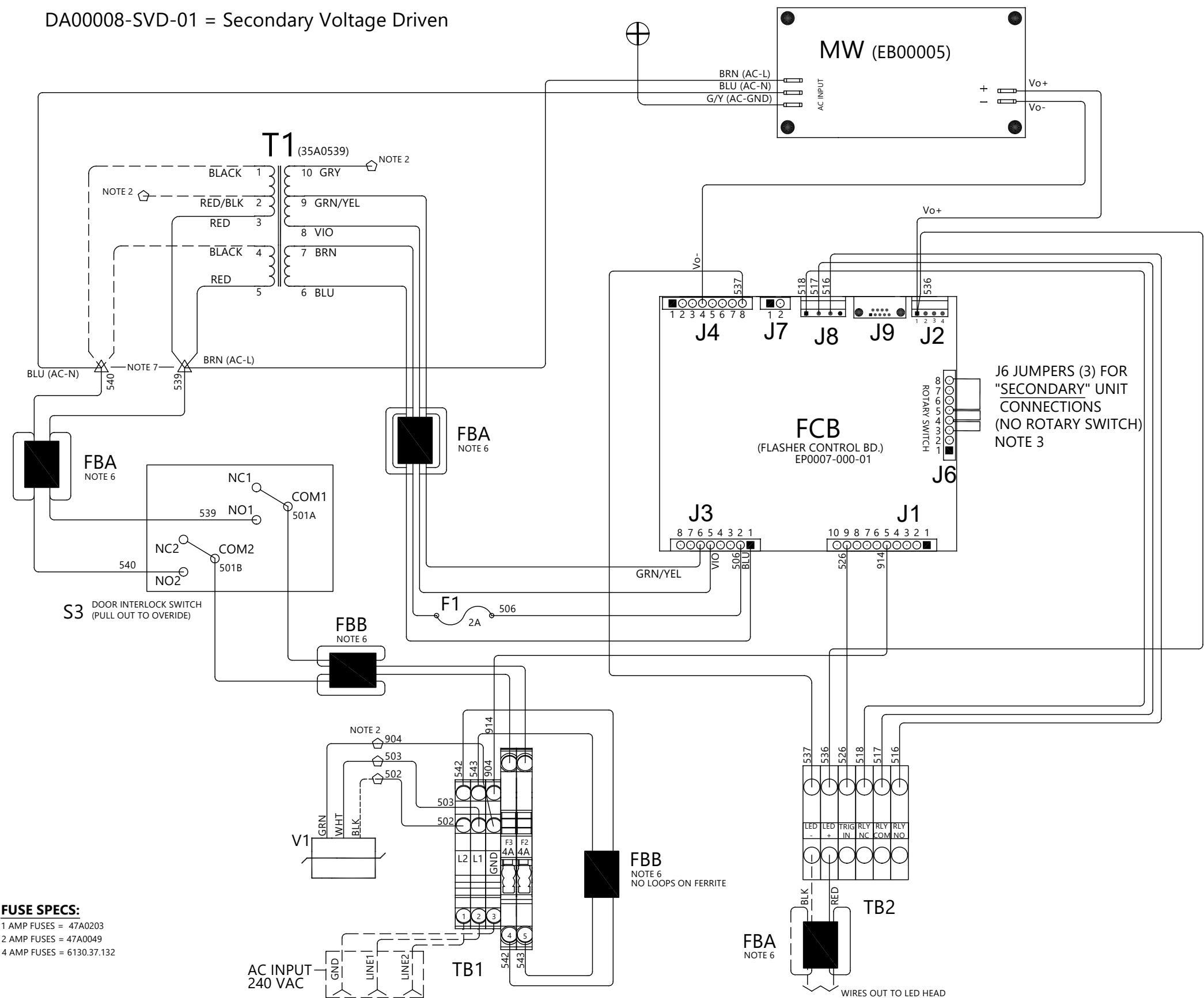
- 1) ALL PART SUBSTITUTIONS MUST BE APPROVED BY ADB ENGINEERING.
- 2) GROUND EACH INDIVIDUAL CONTROL CABINET AT EXTERNAL EARTH GROUND LUG AS INDICATED IN INSTALLATION SECTION OF INSTRUCTION MANUAL.
- 3) UNLESS OTHERWISE SPECIFIED, ALL WIRES ARE 16 AWG, 600V.

DA00008-PVD-01 = Primary Voltage Driven



<div><div>ADB SAFEGATE</div><div>P.O. Box 30829 977 Gahanna Parkway Columbus, OH 43230</div><div>Tel: (614) 861-1304 Fax: (614) 864-2069</div></div>	Information contained on this drawing is to be used expressly in accordance with the purpose for which it was submitted. Any disclosure of this information is strictly prohibited except as ADB SAFEGATE may otherwise agree in writing. Copyright © 2017 ADB SAFEGATE.	CONTROLLED COPY  Unauthorized duplication of this document in whole or part is prohibited. Initialed in RED ink below indicates authorized copy.  INITIAL & DATE:	REV LEVEL	ECO NUMBER	REVISION HISTORY DESCRIPTIONS	DRAWN BY	REV DATE	DRAWING TITLE:  WIRING DIAGRAM, L-849, A/E & C L.E.D RUNWAY END IDENTIFICATION LIGHT (REIL) INTERNAL WIRE CONNECTIONS	DRAWN BY: TRAVIS RAY MARRIOTT DRAWN DATE: 30 MAY 2019 DRAWING NUMBER: DA00008-XXX-01	ASSOCIATED DRAWINGS: EW00026-XXX-01 EP00007-000-01 AS00007-000-01	SCALE: N/A SHEET NUMBER: 4 OF 6 REV. G
				----							
			G	ECP1220	Update ferrite ID (sht 1,2,4,5) and line 914 (sht 2)	NRJ	02FEB24				
			F	INC560	Updates to the input wiring	TM	03MAR21				
			E	INC473	Updated from first build notes	TM	21AUG20				

DA00008-SVD-01 = Secondary Voltage Driven



THE LIGHT ENGINES AND WIRES 701A / B ENGINES ARE INCLUDED IN THE AS00007-00-01 ASSEMBLY.

FUSE SPECS:

- 1 AMP FUSES = 47A0203  
2 AMP FUSES = 47A0049  
4 AMP FUSES = 6130.37.132

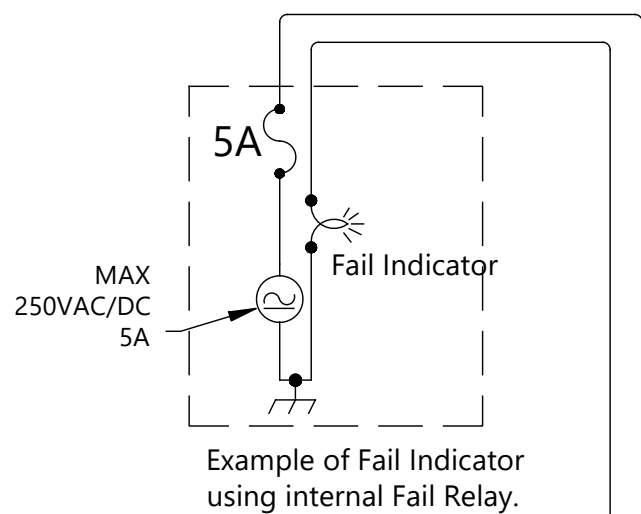
SHEET 5 NOTES:

- 1) ALL PART SUBSTITUTIONS MUST BE APPROVED BY ADB ENGINEERING.  
2) ALL JUNCTIONS MARKED WITH ARE WIRES JOINED OR CAPPED OFF WITH INSULATED CRIMP-ON WIRE SPLICE. DOOR GND WIRE (915) IS PROVIDED WITH WIRE KIT BUT IS NOT SHOWN.  
3) WIRING OF J6 CHANGES FOR PRIMARY (MASTER) UNIT.  
4) CONNECT INPUT GROUND FOR EB00005 TO THE ADJACENT MOUNTING STUD FOR THE COMPONENT PANEL. USE 70A0289 RING TERMINAL.  
5) J6 JUMPERS ARE 18AWG, 600V, 105C, WHITE AND SHOULD COME POPULATED IN MATING PLUG FOR CONNECTOR WITH EW00026-SVD-01 WIRE HARNESS  
6) PLACE CLAMP ON FERRITE ON WIRES AS SHOWN. UNLESS OTHERWISE NOTED PASS EACH WIRE THROUGH ONE LOOP IN FERRITE. "FBA" = EL00001 (FAIR-RITE **0443167251** OR EQUIVALENT)  
"FBB" = EL00002 (FAIR-RITE **0431173551** OR EQUIVALENT)  
7) ALL JUNCTIONS MARKED WITH ARE WIRES JOINED BY 70A0671 CLAMP-ON WIRE SPLICES.

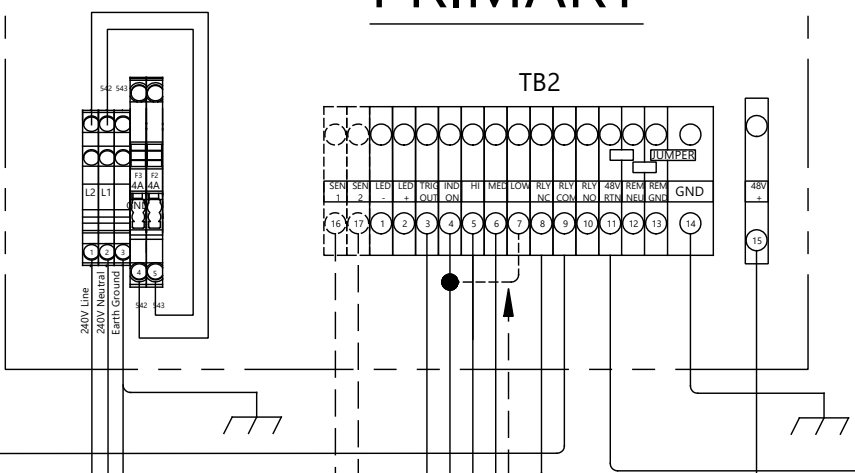
WIRE SPECS:

- 500 SERIES = 18AWG, 600V, 105C, WHITE  
900 SERIES = 18AWG, 600V, 105C, GREEN/YELLOW  
701A = 20AWG, 600V, 105C, RED  
701B = 20AWG, 600V, 105C, BLACK

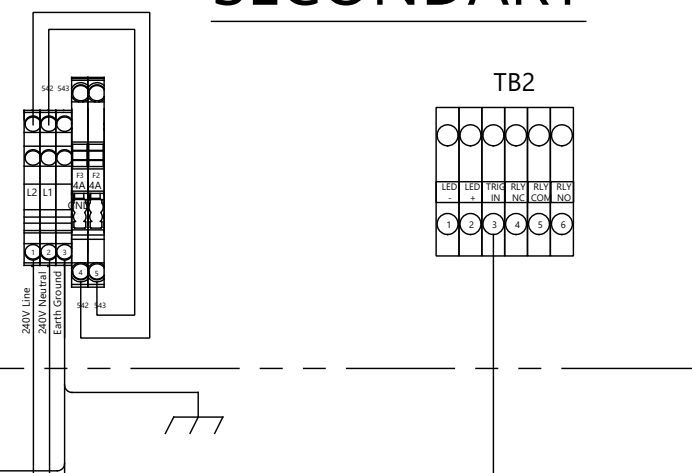
 P.O. Box 30829 977 Gahanna Parkway Columbus, OH 43230 Tel: (614) 861-1304 Fax: (614) 864-2069	Information contained on this drawing is to be used expressly in accordance with the purpose for which it was submitted. Any disclosure of this information is strictly prohibited except as ADB SAFEGATE may otherwise agree in writing. Copyright © 2017 ADB SAFEGATE.	CONTROLLED COPY  Unauthorized duplication of this document in whole or part is prohibited. Initialed in RED ink below indicates authorized copy.  INITIAL & DATE:	REV LEVEL	ECO NUMBER	REVISION HISTORY DESCRIPTIONS	DRAWN BY	REV DATE	DRAWING TITLE:  WIRING DIAGRAM, L-849, A/E & C L.E.D RUNWAY END IDENTIFICATION LIGHT (REIL) INTERNAL WIRE CONNECTIONS	DRAWN BY: TRAVIS RAY MARRIOTT DRAWN DATE: 30 MAY 2019 DRAWING NUMBER: DA00008-XXX-01	ASSOCIATED DRAWINGS: EW00026-XXX-01 EP00007-000-01 AS00007-000-01	SCALE: N/A SHEET NUMBER: 5 OF 6 REV. G
			----	----							
			G	ECP1220	Update ferrite ID (sht 1,2,4,5) and line 914 (sht 2)	NRJ	02FEB24				
			F	INC560	Updates to the input wiring	TM	03MAR21				
			E	INC473	Updated from first build notes	TM	21AUG20				



# LED FLASHER BOX #1 "PRIMARY"



# LED FLASHER BOX #2 "SECONDARY"



- SHEET 6 NOTES:**
- 1) ALL PART SUBSTITUTIONS MUST BE APPROVED BY ADB ENGINEERING.
  - 2) GROUND EACH INDIVIDUAL CONTROL CABINET AT EXTERNAL EARTH GROUND LUG AS INDICATED IN INSTALLATION SECTION OF INSTRUCTION MANUAL.
  - 3) TB1 TERMINAL BLOCKS 18 & 19 ADDED FOR "MONITORING" OPTION ONLY.
  - 4) UNLESS OTHERWISE SPECIFIED, ALL WIRES ARE 16 AWG, 600V.
  - 5) OPTIONAL CURRENT SENSING CONNECTION, L-830-1 (6.6A) OR L-831-2 (20A)

NOTE 5

"L-849A" DOES NOT USE JUMPER

