



L-852T(L) / ITEL-L

LED In-pavement Taxiway Edge Light, Medium-Intensity

**Spare Parts**

SP\_2060, Rev. B, 2024/05/10

**ADB**   
**SAFEGATE**



## A.0 Disclaimer / Standard Warranty

### CE certification

The equipment listed as CE certified means that the product complies with the essential requirements concerning safety and hygiene. The European directives that have been taken into consideration in the design are available on written request to ADB SAFEGATE.

### ETL certification

The equipment listed as ETL certified means that the product complies with the essential requirements concerning safety and C22.2 No.180:13 (R2018) regulations. The CSA directives that have been taken into consideration in the design are available on written request to ADB SAFEGATE.

### All Products Guarantee

ADB SAFEGATE will correct by repair or replacement per the applicable guarantee below, at its option, equipment or parts which fail because of mechanical, electrical or physical defects, provided that the goods have been properly handled and stored prior to installation, properly installed and properly operated after installation, and provided further that Buyer gives ADB SAFEGATE written notice of such defects after delivery of the goods to Buyer. Refer to the Safety section for more information on Material Handling Precautions and Storage precautions that must be followed.

ADB SAFEGATE reserves the right to examine goods upon which a claim is made. Said goods must be presented in the same condition as when the defect therein was discovered. ADB SAFEGATE further reserves the right to require the return of such goods to establish any claim.

ADB SAFEGATE's obligation under this guarantee is limited to making repair or replacement within a reasonable time after receipt of such written notice and does not include any other costs such as the cost of removal of defective part, installation of repaired product, labor or consequential damages of any kind, the exclusive remedy being to require such new parts to be furnished.

ADB SAFEGATE's liability under no circumstances will exceed the contract price of goods claimed to be defective. Any returns under this guarantee are to be on a transportation charges prepaid basis. For products not manufactured by, but sold by ADB SAFEGATE, warranty is limited to that extended by the original manufacturer. This is ADB SAFEGATE's sole guarantee and warranty with respect to the goods; there are no express warranties or warranties of fitness for any particular purpose or any implied warranties of fitness for any particular purpose or any implied warranties other than those made expressly herein. All such warranties being expressly disclaimed.

### Standard Products Guarantee

Products manufactured by ADB SAFEGATE are guaranteed against mechanical, electrical, and physical defects (excluding lamps) which may occur during proper and normal use for a period of two years from the date of ex-works delivery, and are guaranteed to be merchantable and fit for the ordinary purposes for which such products are made.



### Note

See your applicable sales agreement for a complete warranty description.

Replaced or repaired equipment under warranty falls into the warranty of the original delivery. No new warranty period is started for these replaced or repaired products.

### FAA Certified products manufactured by ADB SAFEGATE

ADB SAFEGATE L858 Airfield Guidance Signs are warranted against mechanical and physical defects in design or manufacture for a period of 2 years from date of installation, per FAA AC 150/5345-44 (applicable edition).

ADB SAFEGATE LED products (with the exception of obstruction lighting) are warranted against electrical defects in design or manufacture of the LED or LED specific circuitry for a period of 4 years from date of installation, per FAA EB67 (applicable edition). These FAA certified constant current (series) powered LED products must be installed, interfaced and powered with and through products certified under the FAA Airfield Lighting Equipment Program (ALECP) to be included in this 4 (four) year warranty. This includes, but is not limited to, interface with products such as Base Cans, Isolation Transformers, Connectors, Wiring, and Constant Current Regulators.



## Note

See your sales order contract for a complete warranty description.

Replaced or repaired equipment under warranty falls into the warranty of the original delivery. No new warranty period is started for these replaced or repaired products.

---

## Liability

---



### WARNING

Use of the equipment in ways other than described in the catalog leaflet and the manual may result in personal injury, death, or property and equipment damage. Use this equipment only as described in the manual.

---

ADB SAFEGATE cannot be held responsible for injuries or damages resulting from non-standard, unintended uses of its equipment. The equipment is designed and intended only for the purpose described in the manual. Uses not described in the manual are considered unintended uses and may result in serious personal injury, death or property damage.

Unintended uses, includes the following actions:

- Making changes to equipment that have not been recommended or described in this manual or using parts that are not genuine ADB SAFEGATE replacement parts or accessories.
- Failing to make sure that auxiliary equipment complies with approval agency requirements, local codes, and all applicable safety standards if not in contradiction with the general rules.
- Using materials or auxiliary equipment that are inappropriate or incompatible with your ADB SAFEGATE equipment.
- Allowing unskilled personnel to perform any task on or with the equipment.

## Copyright Statement

This manual or parts thereof may not be reproduced, stored in a retrieval system, or transmitted, in any form or by any means, electronic, mechanical, photocopying, recording, nor otherwise, without the author's prior written consent.

This manual could contain technical inaccuracies or typographical errors. The author reserves the right to revise this manual from time to time in the contents thereof without obligation of the author to notify any person of such revision or change. Details and values given in this manual are average values and have been compiled with care. They are not binding, however, and the author disclaims any liability for damages or detriments suffered as a result of reliance on the information given herein or the use of products, processes or equipment to which this manual refers. No warranty is made that the use of the information or of the products, processes or equipment to which this manual refers will not infringe any third party's patents or rights. The information given does not release the buyer from making their own experiments and tests.

# TABLE OF CONTENTS

<b>1.0 L-852T(L) / ITEL-L</b> .....	<b>1</b>
1.1 ITEL-L Product Introduction .....	1
1.1.1 LED In-pavement Taxiway Edge Light .....	1
<b>2.0 ITEL Parts</b> .....	<b>3</b>
2.1 ITEL Spare Parts .....	3
2.2 Illustrated Parts List .....	4
<b>A.0 SUPPORT</b> .....	<b>7</b>
A.1 ADB SAFEGATE Website .....	8
A.2 Recycling .....	9
A.2.1 Local Authority Recycling .....	9
A.2.2 ADB SAFEGATE Recycling .....	9



## 1.0 L-852T(L) / ITEL-L

The ITEL-L LED in-pavement fixture can be used on taxiway edge, taxiway intersection and helipad applications. These fixtures have an average LED life of 100,000 hours under high-intensity conditions and more than 200,000 hours under actual operating conditions, resulting in significant reduction or even elimination of ongoing maintenance costs and periodic re-lamping expenses. The ITEL-L fixtures operate on either 3- or 5-step CCRs.

### 1.1 ITEL-L Product Introduction

The ITEL-L LED in-pavement fixture can be used on taxiway edge, taxiway intersection and helipad applications. These fixtures have an average LED life of 100,000 hours under high-intensity conditions and more than 200,000 hours under actual operating conditions, resulting in significant reduction or even elimination of ongoing maintenance costs and periodic re-lamping expenses. The ITEL-L fixtures operate on either 3- or 5-step CCRs.

#### 1.1.1 LED In-pavement Taxiway Edge Light

##### Compliance with Standards

<b>FAA:</b>	L-852T(L) AC 150/5345-46 (Current Edition) and the FAA Engineering Brief No. 67. ETL Certified.
<b>ICAO:</b>	Annex 14, Vol. I, Ed. 6, para. 5.3.18.
<b>CE:</b>	Complies with the requirement of the EMC Directive 2004/108/EC.

##### Uses

<b>FAA L-852T(L)</b>	<ul style="list-style-type: none"> <li>• Taxiway edge</li> <li>• Heliports</li> </ul>
----------------------	---

##### Electrical Supply

6.6 A through an L-830-1 (for 60 Hz) or L-831-1 (for 50 Hz) 30/45 W isolation transformer or an L-830-17 20/25 W isolation transformer. The ITEL fixture is designed to work with any IEC- or FAA-compliant transformer up to 100 W without affecting the performance or lifetime of the light fixture or transformer. See data sheet 3033 for more details on recommended isolation transformers specified below.

The total CCR load shown in the following table represents the total VA load imposed on the regulator and accounts for power factor and transformer load.

ITEL Fixture	Fixture Load	Isolation Trans-former	Heater On/Off	Trans-former Load	Total CCR Load
With arctic option	19.5 VA	30/45 W	Off	6 VA	25.5 VA
	44 VA	30/45 W	On	9 VA	53 VA
Without arctic option	19.5 VA	20/25 W	N/A	5 VA	24.5 VA





## 2.0 ITEL Parts

### Ordering Code

#### LED Color

- 8 = Yellow
- 9 = White
- A = Green
- B = Red
- C = L-852T(L) Aviation Blue<sup>1</sup>

#### Mounting

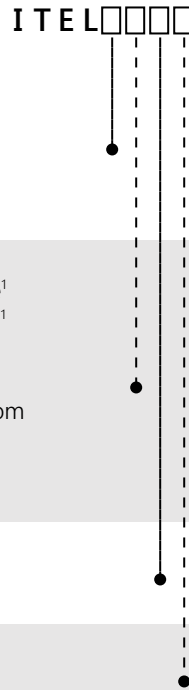
- 1 = 12-inch fixture for standard L-868B light base<sup>1</sup>
- 2 = 12-inch fixture for standard L-867B light base<sup>1</sup>
- 3 = 8-inch fixture for ICAO light base
- 4 = 8-inch fixture with L-868B adapter ring
- 6 = 8-inch fixture with L-867B adapter ring, bottom mounted
- 7 = 8-inch fixture with L868B snow plow ring
- 8 = 8-inch fixture with 11-inch adapter ring

#### Power

- 1 = 60 Hz<sup>1</sup>
- 2 = 50 Hz<sup>2</sup>

#### Arctic Option

- 0 = Without arctic option
- 1 = With arctic option



### Notes:

1. ETL Certified
2. Any 50 Hz option carries the CE Mark

## 2.1 ITEL Spare Parts

**Table 1: Spare Parts**

Description	Part No.
Cable clamp, inner cover	4071.50.090
Cable clamp, with monitoring	62A2169
Cord set, L-823	44A7387-10
Cord set, 4-pin, monitoring	73A0139
Grommet, cord set (2)	63A1014
LED light engine, L-852T(L), blue, w/out arctic kit <sup>1</sup>	44A7177-10
LED light engine, L-852T(L), blue, with arctic kit <sup>1</sup>	44A7177-11
LED PCB, blue, 50 Hz, with monitoring	44A7197-50-1
LED PCB, blue, 50 Hz, without monitoring	44A7197-50-0
LED PCB, blue, 60 Hz, with monitoring	44A7197-60-1
LED PCB, blue, 60 Hz, without monitoring	44A7197-60-0
Lens	63A1071

**Table 1: Spare Parts (Continued)**

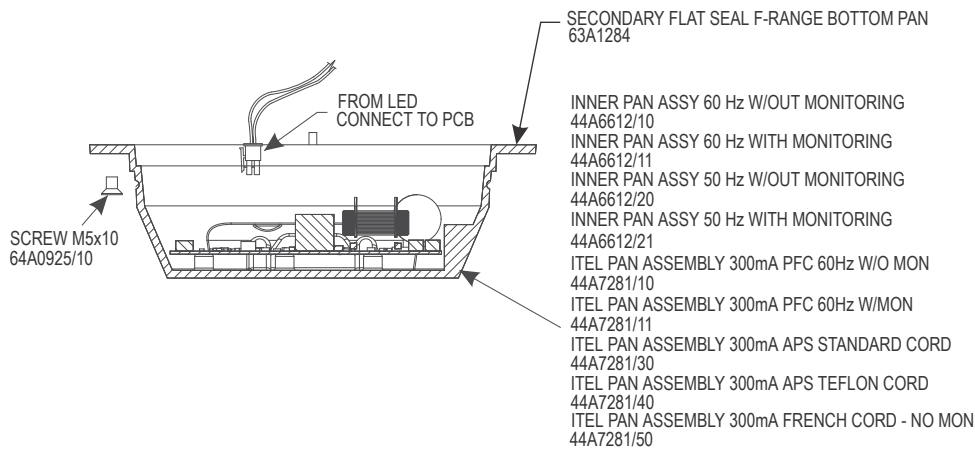
Description	Part No.
Lens, support plate	4071.76.020
Lens gasket, flat protection	61A0539
Lens gasket, molded	4071.76.041
O-ring, inner cover seal	63A1285
O-ring, pressure release screw	63B0267-011
Pressure release screw	60A2602
Anti-rotation Pin	4071.50.120
ITEL LED PS PCB ASSY 60HZ W/MONITORING	44A6596
ITEL LED PS PCB ASSY 60HZ W/O MONITORING	44A6596-2
PCB ASSY, APS ITEL PWR SUPPLY	44A6908-3

**Notes**

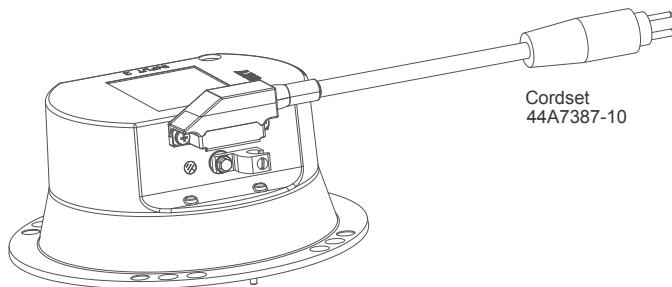
<sup>1</sup> When replacing blue LED light engines in fixtures shipped before June 2012, please consult the manual or call the ADB SAFEGATE Sales Department.

**2.2 Illustrated Parts List**

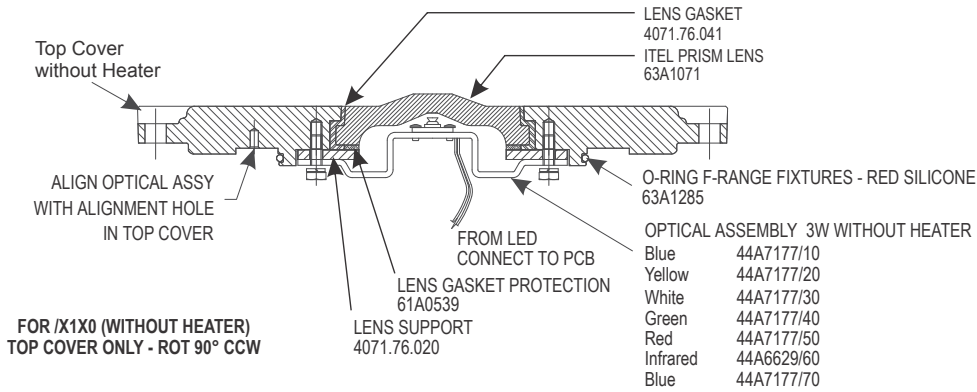
**Figure 1: ITEL Pan Assembly**



**Figure 2: ITEL Pan Assembly with molded cord set**

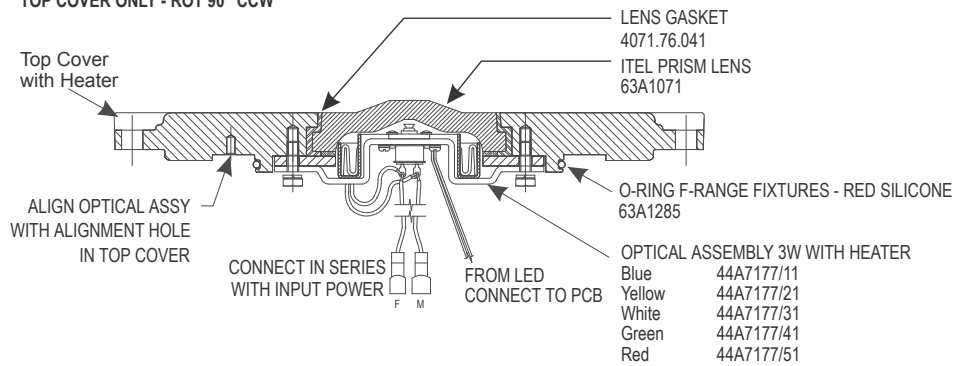


**Figure 3: Top Cover without heater**

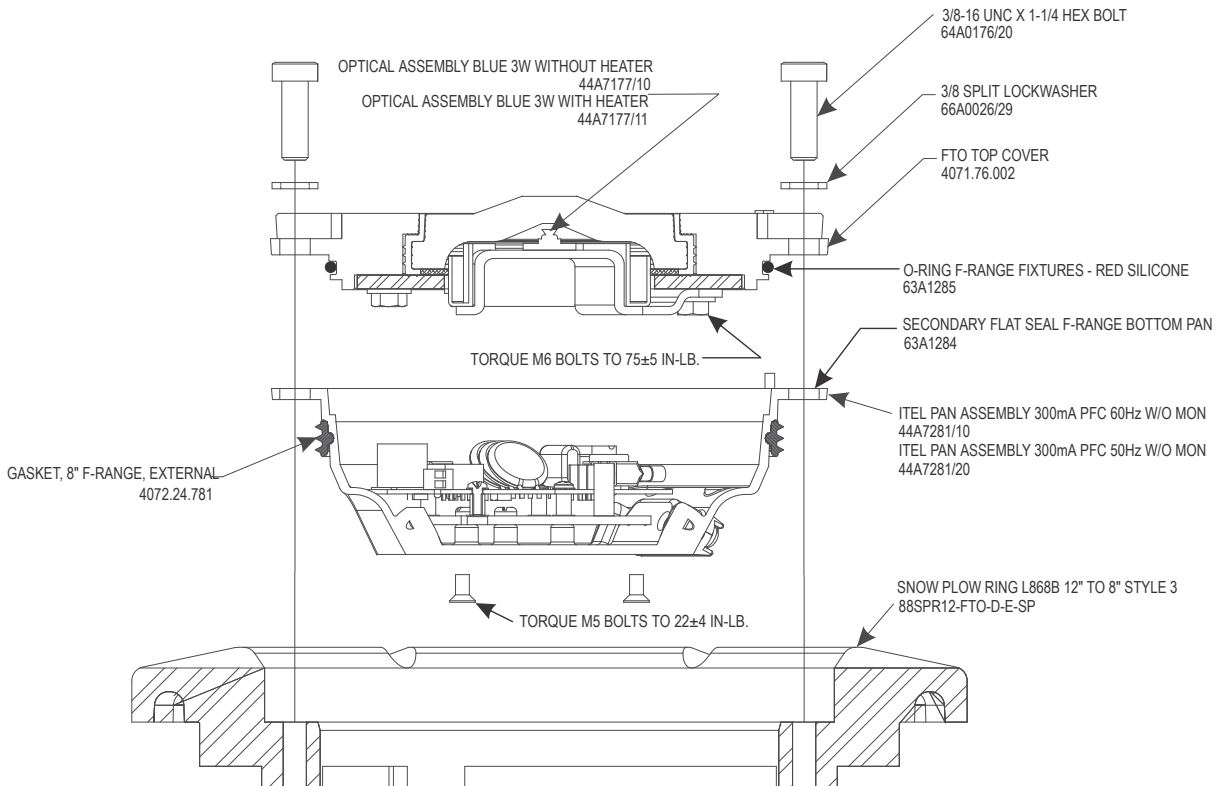


**Figure 4: Top Cover with heater**

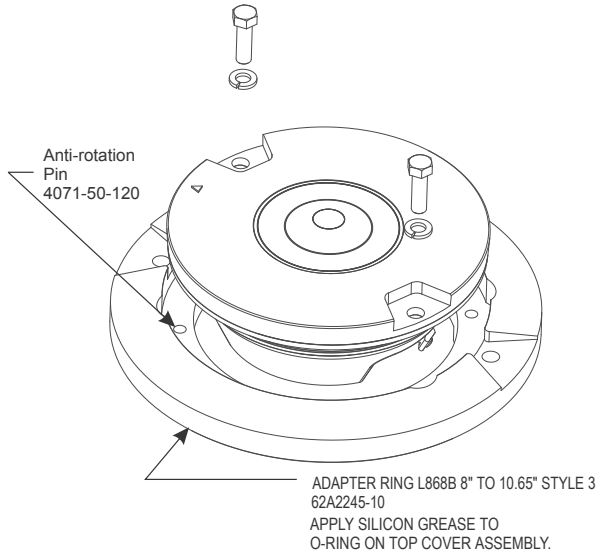
FOR /X1X1 (WITH CURRENT HEATER)  
TOP COVER ONLY - ROT 90° CCW



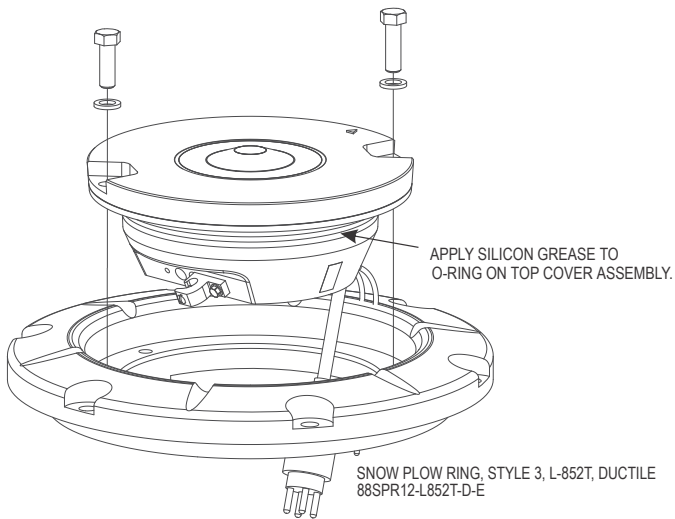
**Figure 5: Snow Plow Ring**



**Figure 6: Adapter Ring 10.65"**



**Figure 7: Adapter Ring 12"**



## Appendix A: SUPPORT

Our experienced engineers are available for support and service at all times, 24 hour/7 days a week. They are part of a dynamic organization making sure the entire ADB SAFEGATE is committed to minimal disturbance for airport operations.

### ADB SAFEGATE Support

#### Technical Support – Global

Customers in Europe, the Middle East, Africa or Asia Pacific are more than welcome to our portal for technical support. Trained in all areas of system issues, troubleshooting, quality control and technical assistance, our highly experienced Technical support specialists are available 24 hours a day, seven days a week to provide assistance over the phone. In the Americas, we also offer live technical support.

#### Live Technical Support – Americas

If at any time you have a question or concern about your product, contact ADB SAFEGATE's US-based technical support specialists, available 24 hours a day, seven days a week, to assist you via phone.

ADB SAFEGATE Americas Technical Service & Support (US & Canada) : **+1-800-545-4157**

ADB SAFEGATE Americas Technical Service & Support (Canada): **+1-905-631-1597**

ADB SAFEGATE Americas Technical Service & Support (International): **+1-614-861-1304**

We can also be reached via email during regular business hours:

Airfield and Gate: **techservice.us@adbsafegate.com**

Gate: **gateservice.us@adbsafegate.com**

We look forward to working with you!

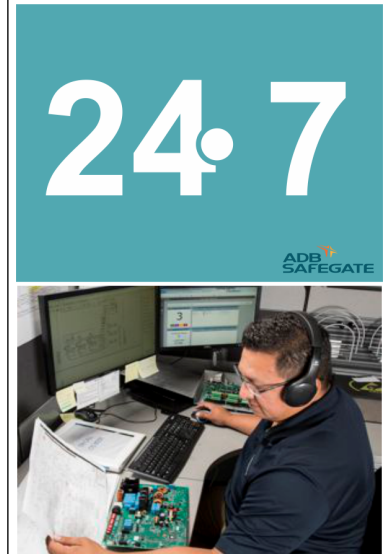
#### Before You Call

When you have an airfield lighting or system control system problem, prior to calling, please ensure the following:

- Review the product's manual and troubleshooting guide.
- Be located with the product ready to troubleshoot.
- Have all necessary information available: airport code/company name, customer id number, contact phone number/email address, product/part number.
- Have a *True RMS* meter available and any other necessary tools.

When calling about an issue with Safedock A-VDGS, we can serve you better if you collect the following information before you call:

- Relevant information regarding the issue you are calling about, such as gate number, flight number, aircraft type and time of the event.
- What, if any, actions have been taken to resolve the issue prior to the call.
- If available, provide a CCTV recording of the incident to aid in aligning the information from the Safedock log file.



#### Note

For more information, see [www.adbsafegate.com](http://www.adbsafegate.com), contact ADB SAFEGATE Support via email at [support@adbsafegate.com](mailto:support@adbsafegate.com) or

Europe: +32 2 722 17 11

Americas: +1 614 861 1304. Press 3 for technical service or press 4 for sales support.

China: +86 (10) 8476 0106

Middle East and Africa: +971 4 452 7575

## A.1 ADB SAFEGATE Website

The ADB SAFEGATE website, [www.adbsafegate.com](http://www.adbsafegate.com), offers information regarding our airport solutions, products, company, news, links, downloads, references, contacts and more.

## A.2 Recycling

### A.2.1 Local Authority Recycling

The disposal of ADB SAFEGATE products is to be made at an applicable collection point for the recycling of electrical and electronic equipment. The correct disposal of equipment prevents any potential negative consequences for the environment and human health, which could otherwise be caused by inappropriate waste handling. The recycling of materials helps to conserve natural resources. For more detailed information about recycling of products, contact your local authority city office.

### A.2.2 ADB SAFEGATE Recycling

ADB SAFEGATE is fully committed to environmentally-conscious manufacturing with strict monitoring of our own processes as well as supplier components and sub-contractor operations. ADB SAFEGATE offers a recycling program for our products to all customers worldwide, whether or not the products were sold within the EU.

ADB SAFEGATE products and/or specific electrical and electronic component parts which are fully removed/separated from any customer equipment and returned will be accepted for our recycling program.

All items returned must be clearly labeled as follows:

- For *ROHS/WEEE* Recycling
- Sender contact information (Name, Business Address, Phone number).
- Main Unit Serial Number.

ADB SAFEGATE will continue to monitor and update according for any future requirements for *EU directives* as and when *EU member states* implement new *regulations* and or *amendments*. It is our aim to maintain our *compliance plan* and assist our customers.





## Company Addresses

ADB SAFEGATE, Belgium	ADB SAFEGATE BV Leuvensesteenweg 585, B-1930 Zaventem Belgium
Contact: Tel.: +32 2 722 17 11 Fax: +32 2 722 17 64	Email: <a href="mailto:marketing@adbsafegate.com">marketing@adbsafegate.com</a> Internet: <a href="http://www.adbsafegate.com">www.adbsafegate.com</a>
ADB SAFEGATE, Americas	ADB SAFEGATE Americas LLC 700 science Blvd, Columbus OH 43230, USA
Contact: Tel.: +1 (614) 861 1304 Fax: +1 (614) 864 2069	Email: <a href="mailto:sales.us@adbsafegate.com">sales.us@adbsafegate.com</a> Internet: <a href="http://www.adbsafegate.com">www.adbsafegate.com</a>
ADB SAFEGATE, Sweden	ADB SAFEGATE Sweden AB Djurhagegatan 19 SE-213 76 Malmö Sweden
Contact: Tel.: +46 (0)40 699 17 00 Fax: +46 (0)40 699 17 30	Email: <a href="mailto:marketing@adbsafegate.com">marketing@adbsafegate.com</a> Internet: <a href="http://www.adbsafegate.com">www.adbsafegate.com</a>
ADB SAFEGATE, China	ADB SAFEGATE Airfield Technologies Ltd. China Unit 603, D Block, CAMIC International Convention Center, No 3, Hua Jia Di East road, ChaoYang district, Beijing 100102 P.R. China
Contact: Tel.: +86 (10) 8476 0106 Fax: +86 (10) 8476 0090	Email: <a href="mailto:china@safegate.com">china@safegate.com</a> Internet: <a href="http://www.adbsafegate.com">www.adbsafegate.com</a>
ADB SAFEGATE, Germany	ADB SAFEGATE Germany GmbH Konrad-Zuse-Ring 6, D-68163 Mannheim Germany
Contact: Tel.: +49 (621) 87 55 76-0 Fax: +49 (621) 87 55 76-55	Email: <a href="mailto:marketing@adbsafegate.com">marketing@adbsafegate.com</a> Internet: <a href="http://www.adbsafegate.com">www.adbsafegate.com</a>



## Powering Your Airport Performance from Approach to Departure

[adbsafegate.com](https://adbsafegate.com)

Copyright © ADB SAFEGATE, all rights reserved

