

Q-Aviation Lighting / Airfield Lighting / Q-L806 Wind Direction Indicator

L806 Wind Direction Indicator

TECHNICAL DETAILS



Application:	Frangible base, Airfield/Runway
Colours:	ICAO Red/White FAA Orange
Lighting styles:	Style I-A: Externally lighted Style I-B: Internally lighted Style II: Unlighted
Windsock size:	Size 1: Ø45 x 250 cm - Ø18" x 8 ft.
Windsock Material:	Reinforced double stitched Polyester, PU Coated
Windsock frame material:	SS316
Power consumption:	Externally: 50 Watt Internally: 26 Watt Unlighted: n/a
Obstruction Light:	1x L-810, Low intensity
Mast material:	Aluminium, 6060T66
Mast dimensions:	Ø100 x 1570 mm
Base:	Tiltable foot, Mounted on concrete. Aluminium Frangible Bolts
Ambient Temp:	-20°C to + 60°C
In Compliance With:	ICAO Annex 14 Vol. I & Vol. II FAA AC150/5345-27E L-806
Life expectancy:	100.000+ hours
System warranty:	24 months
Windsock Warranty:	6 months
IP index:	Externally: IP 65 Internally: IP 66 Unlighted: n/a
Power input options:	100-240Vac 50-60 Hz 2.8-6.6A 24Vdc

DESCRIPTION

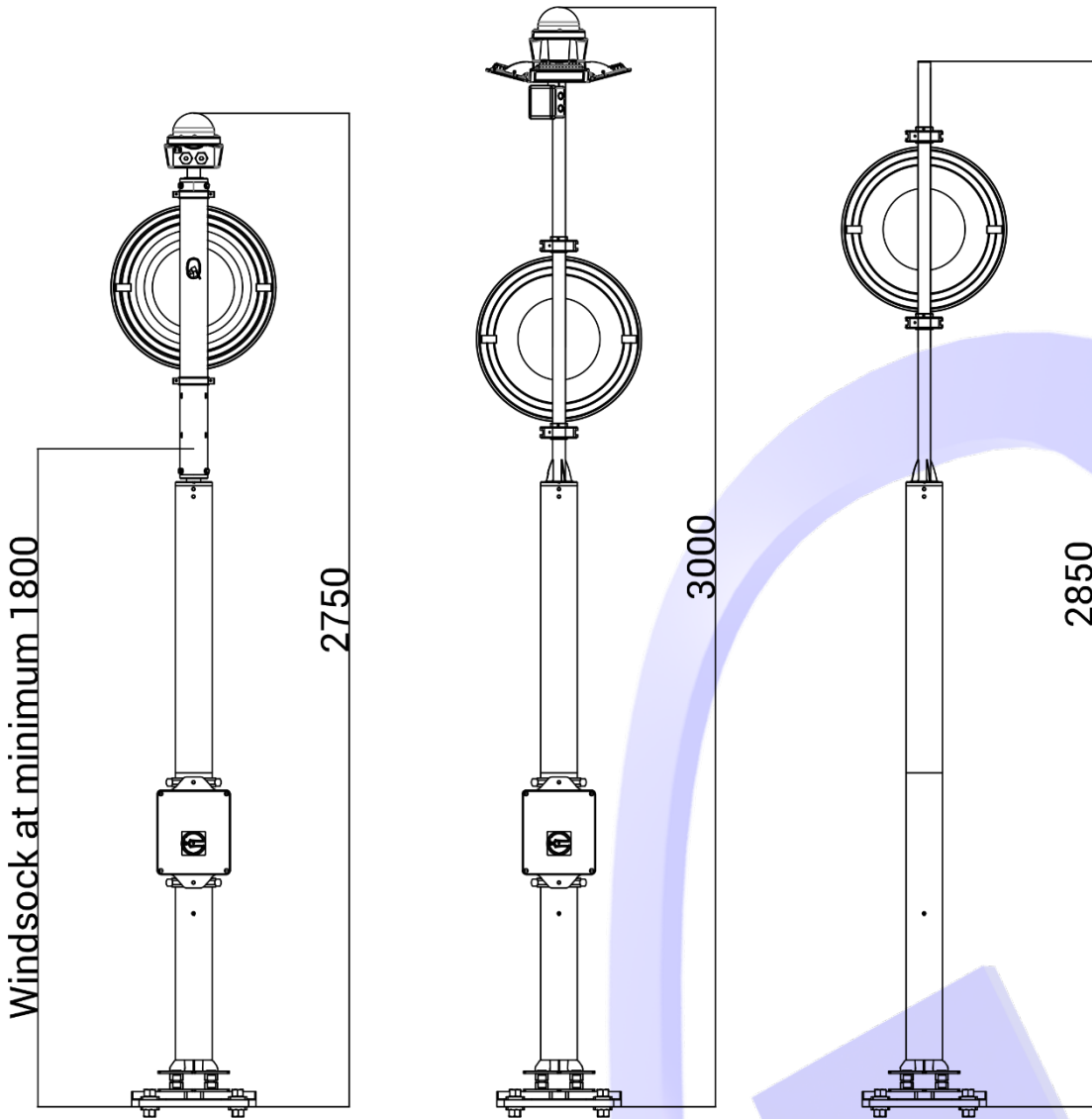
The Q-Aviation L-806 Wind Direction Indicator is a high-end product. The L-806 Wind Direction Indicators are usually placed close to a runway or taxiway to indicate to the pilots the wind direction, in order to ensure a safe take-off and taxi. The L-806 comes with frangible bolts to ensure the mast will break when it collides with a plane or other moving object. The L-806 wind direction indicators are in compliance with ICAO annex 14 vol. I & vol. II and FAA AC150/5345-27E L-806 standards.

ORDER CODES - L806 Wind Direction Indicator

Q23-L806	X1	XX	XXX
↓	↓	↓	↓
Q23- L806I1 -	L-806 ICAO Wind Direction Indicator with Red/White frangible mast & support, Ø45x250 cm red/white striped windsock.	IA -	Style I-A; Externally Lighted system
Q23- L806F1 -	L-806 FAA Wind Direction Indicator with Orange frangible mast & support, Ø45x250 cm Orange windsock.	IB -	Style I-B; Internally Lighted system
		II -	Style II; Unlighted system
		024 -	24Vdc Power input
		066 -	2.8 – 6.6A power input
		230 -	100-240 Vac power input
		000 -	No power input, only applicable with unlighted (II) version.

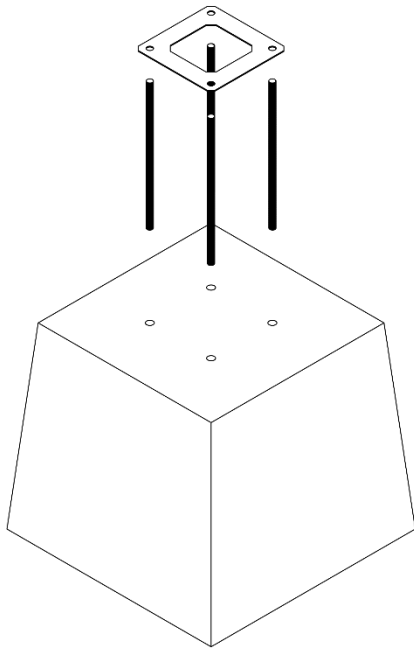
DIMENSIONAL DRAWING

The main dimensions are displayed in the image below.

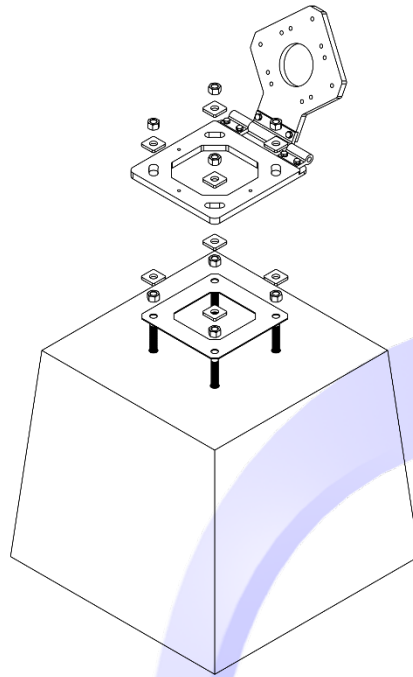


BASE MOUNTING

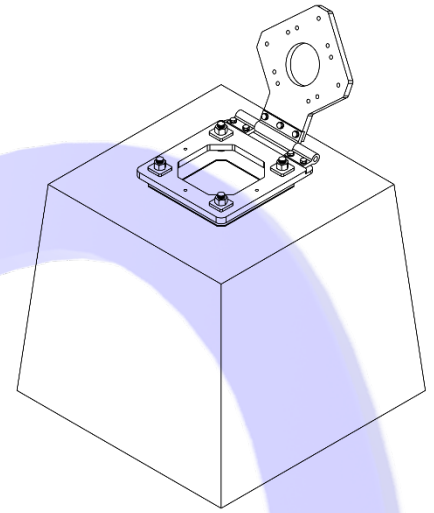
The image below shows the supplied parts for mounting the base.



Before pouring the concrete



Before assembly



Finished base with hinge.