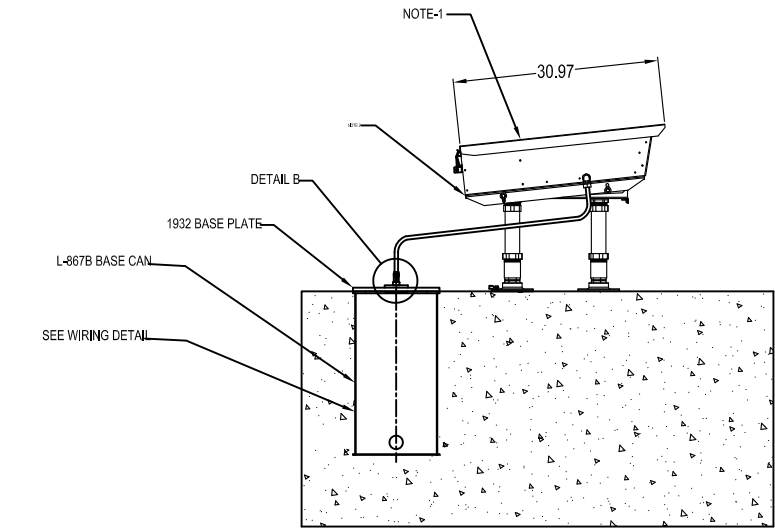
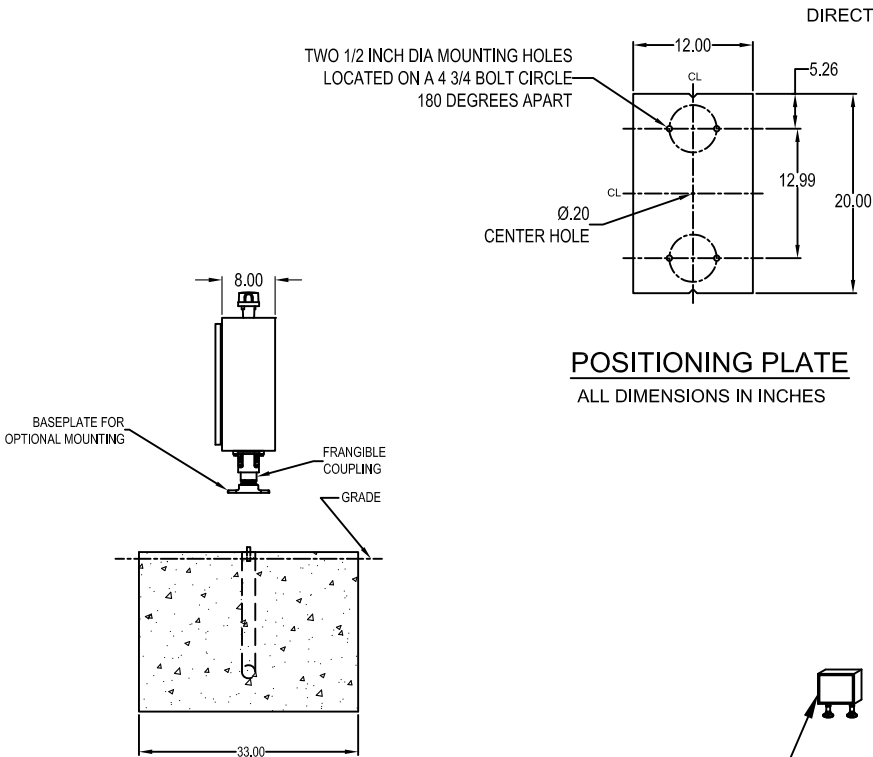


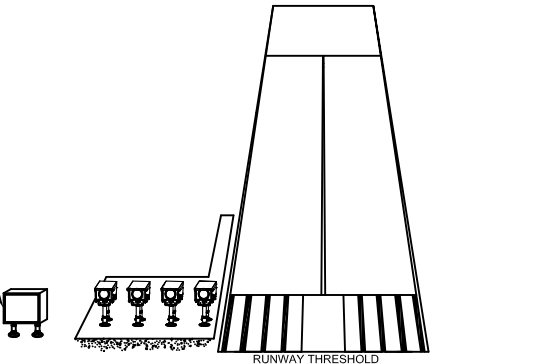
PAPI PRIMARY INSTALLATION (STYLE A ONLY)



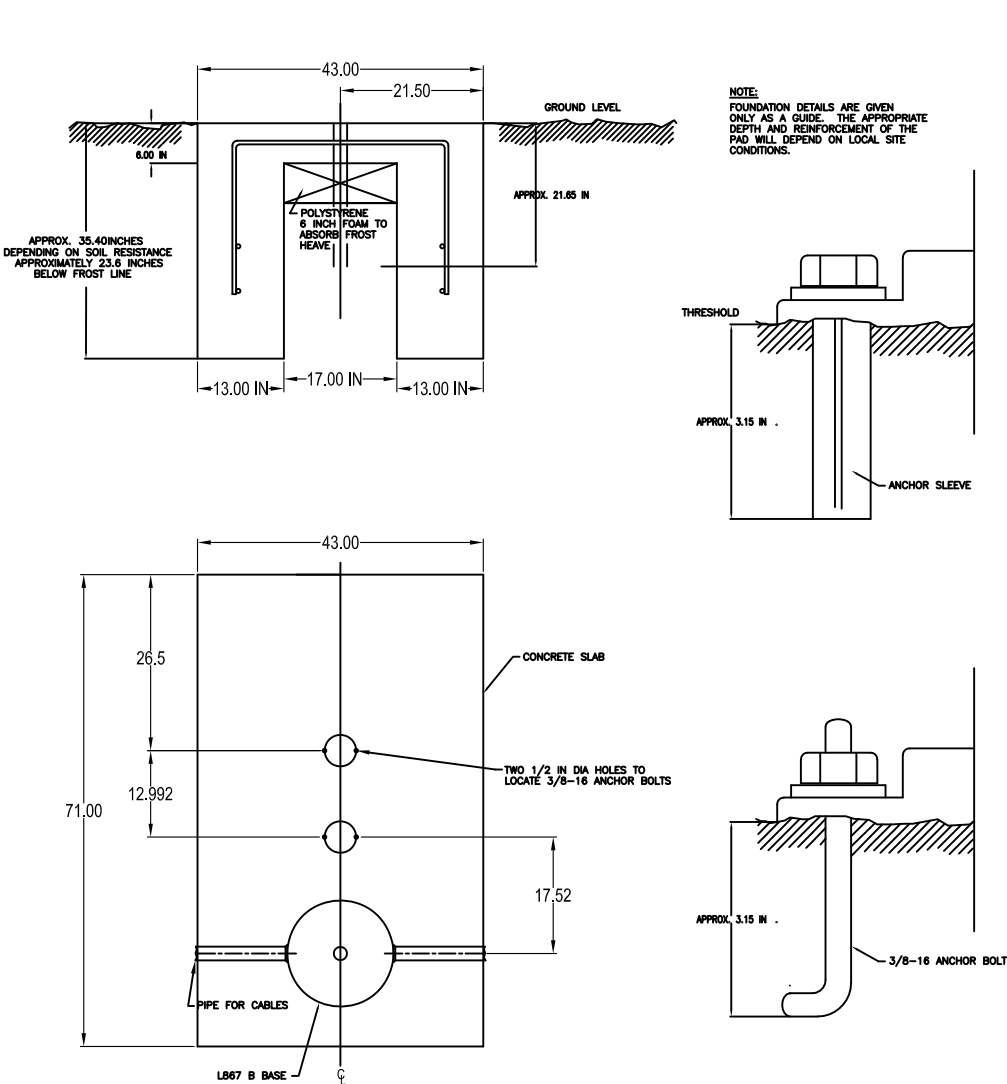
PAPI TYPICAL INSTALLATION



FOR L881 STYLE A TWO BOX SYSTEM



FOR L880 STYLE A FOUR BOX SYSTEM



PAPI 2 LEG FOUNDATION DETAIL

- NOTES:
- SEE 117A0039 FOR LIGHT UNIT INSTALLATION DETAILS.
 - ENCLOSURE MUST BE GROUNDED - GROUND LUG PROVIDED AT REAR OF ENCLOSURE.

- REV F NOTES:
- REMOVE VIEW D
 - CHANGE PRIMARY INSTALLATION CONCRETE PAD TO SHOW TWO BASE CANS.

CAUTION:
THIS DRAWING IS ONLY INTENDED FOR USE AS GENERAL AIRFIELD SYSTEM DESIGN GUIDANCE. THE DESIGNER MUST VERIFY DESIGN WITH LOCAL CODES AND VARYING CHARACTERISTICS FOR EACH UNIQUE AIRFIELD APPLICATION.

CONTROLLED COPY			
Unauthorized duplication of this document in whole or part is prohibited. Initialed in RED ink below indicates authorized copy.			
INITIAL & DATE: _____			
ADB			
ADB Airfield Solutions 977 Gahanna Parkway, Columbus, Ohio 43230 Telephone: 614-861-1304, Fax: 614-864-2069			
DRAWING TITLE: PAPI STYLE A AND STYLE B TYPICAL SYSTEM INSTALLATION DETAIL L-880 / L-881			
DRAWING NUMBER: 117A0047		SHEET NUMBER: 1 OF 1	
REV. H			

REV	DESCRIPTION	DATE
H	1-1/4" TRADE SIZE WAS 1"	03DEC15
G	3164 SEE EC-REPR DIM FRMT EDGE TO MNT HLE	09MAR11
F	SEE REV F NOTES	02FEB09
E	ADDED VIEW "D"	30JAN09
D	01969 SEE ECO	18JUN08
C	ADD DETAIL B & DETAIL C	29APR08
B	ADD POSITIONING PLATE LAYOUT	12FEB08
A	INITIAL RELEASE	23OCT07
REV	ECO	
LEVEL	NUMBER	
ASSOCIATED DRAWINGS: PAPA & PAPB		DRAWN BY: JIM GAFFNEY
		DRAWN DATE: 23OCT07

All information contained herein, including illustrations, specifications, and dimensions, is believed to be reliable as of the date of this publication, but is subject to change without notice. ADB reserves the right to make changes and improvements to its products and assumes no responsibility for these modifications. Any disclosure of this information is strictly prohibited except as ADB Airfield Solutions, Inc. may otherwise agree to in writing. Copyright © 2010 ADB Airfield Solutions, Inc.

REFERENCE DOCUMENTATION:	
96A0379	SINGLE CHANNEL PAPI MANUAL
43A3377	SINGLE CHANNEL PAPI A 2&4 BOX SYSTEM EXTERNAL WIRING
43A3390	SINGLE CHANNEL PAPI B 2&4 BOX SYSTEM EXTERNAL WIRING

