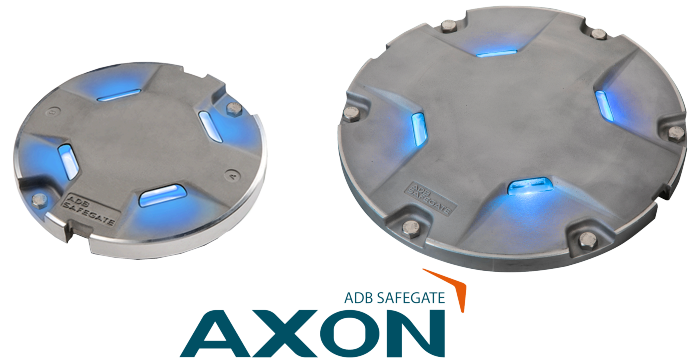


# AXON

## LED L-852T(L) Taxiway Edge Omnidirectional Inset 8-inch and 12-inch



### Compliance with Standards (current version)

<b>FAA</b>	AC 150/5345-46 and FAA Engineering Brief No. 67; L-852T(L) ETL certified
<b>ICAO</b>	Annex 14, Volume 1
<b>NATO</b>	STANAG 3316
<b>IEC</b>	61827
<b>EASA</b>	CS-ADR-DSN
<b>Canada</b>	TP 312
<b>Australia</b>	MOS 139
<b>US Navy</b>	NAVAIR 5150AAA-2, WP 006-04
<b>UFC</b>	3-535-01
<b>CE</b>	

### Uses

The AXON 8- and 12-inch low-protrusion, protected prism, omnidirectional inset LED light fixture is provided with blue or yellow LEDs. This fixture, with an infrared (IR) option, can be used in the following applications:

#### ICAO

- L-852T(L) Taxiway Edge
- NAVAIR Edge
- UFC Edge
- Intermediate Holding Position (MOS)

### Features and Benefits

#### Efficiency

- EQ has an integrated ILCMS remote for use with the LINC 360 system providing high data capacity and resisting degradation from various types of radio effects to provide a superior communication platform
- Precision aimed optics enhancing photometric performance and complementing extended LED life
- Reduced bottom pan profile allowing for very shallow base can installation

- LED pulse width modulated (PWM) at 400 Hz optimizing LED performance and eliminating perceptible flicker to a moving human observer throughout the range of brightness steps
- Operates at all steps of constant current regulator technologies designed in compliance with IEC or FAA requirements
- Fully dimmable lights, conforming to the dimming curve of traditional halogen lights
- Low protrusion, high-intensity, Style 3 ( $\leq 6.35$  mm) inset light fixtures
- No negative slope in front of the prisms

#### Sustainability

- Fully encapsulated all-in-one universal power supplies for Runway, Taxiway, Approach and Omni inset families
- Latest generation LEDs providing a long-lasting light source with high efficiency and low power consumption
- Reinforced top cover substantially exceeding standards to improve durability and longevity
- One single family of fixtures covering all runway, taxiway and approach applications
- IP68 rated enclosure designed for harsh environments; all fastenings are stainless steel
- Compatible with existing infrastructure allowing for direct replacement of existing LED inset fixtures

#### Safety

- Improved mechanical design to strengthen and consolidate components, improving the customer maintenance experience
- Fail-open option for compatibility with legacy monitoring systems and optimization of advanced control and monitoring systems
- Failed-LED Detection as required by Engineering Brief 67D
- Robust lightning protection complying with ANSI/IEEE C62.41-1991; Location Category C2 as required by FAA Eng. Brief 67 Category C2 is defined as a 1.2/50  $\mu$ S – 8/20  $\mu$ S combination wave, with a peak voltage of 10,000 V and a peak current of 5,000 A

## Ordering Code

Application	Standards	Market Specific	Dimensions	Prism	Beam Orientation	Toe-in	Color - Side 1 (Left)	Color - Side 2 (Right)	Power and Monitoring	Connector and Cable	Options	Version
RS												

### Application

TE = Taxiway Edge

### Standards

1 = FAA / ICAO<sup>1</sup>

### Market Specific

0 = None

1 = Buy American Preference (BAP)<sup>2</sup>

### Dimensions

1 = 8 inch (203 mm) diameter

2 = 12 inch (305 mm) diameter, 11.25 inch BC (285 mm; L-868B mount)<sup>3</sup>

4 = 12 inch (305 mm) diameter, 10.25 inch BC (260 mm; L-867B mount)<sup>3</sup>

### Prism

P = 4 protected prisms

### Beam Orientation

3 = Omnidirectional

### Toe-in

N = Not applicable

### Color - Side 1 (Left)

B = Blue

Y = Yellow<sup>4</sup>

1 = Infrared Blue<sup>4</sup>

2 = Infrared Yellow<sup>4</sup>

### Color - Side 2 (Right)

N = Not applicable

### Power and Monitoring

S = 2.8 - 6.6 A, non-monitored — power only

M = 2.8 - 6.6 A, Fail-open monitoring

R = 2.8 - 6.6 A, EQ integrated LINC 360<sup>5</sup>

### Connector and Cable

1 = 1 x Style 6 2-pole plug, 2 individual wires<sup>6</sup>

2 = 1 x Style 1 2-pole plug, 2-core cable<sup>6</sup>

5 = 1 x Flat 3-pole plug, 3 individual wires<sup>4</sup>

### Options

0 = None

1 = Arctic Kit

### Version

2 = Version 2

## Ordering Code Notes

1. If a 2-cord set fixture is required meeting BAP, digit 13, "Power and Monitoring", must be M.
2. Required for FAA when funded by AIP.
3. L-867B base can mounting — Existing L-867B base must have a top flange with a 9.25 inch ID. L-867B bases made prior to 2007 will have a top flange with a 8-inch ID. Use AA132820X adapter ring with 8-inch fixture for these applications.
4. Not ETL submitted or not applicable to FAA market.
5. EQ light fixtures are only available as a one connector option.
6. All Style 1 corded fixtures will include a ground lug. All Style 6 or 3-pole corded fixtures will be provided with grounding screw(s).

## Power Supply Options

- Non-Monitored — Power only
- Monitored — Integrated Fail-open technology
- EQ with integrated ILCMS with OFDM technology for use with LINC 360 system

## Maintenance and Installation

The light fixture can be installed on an 8-inch or 12-inch base. Gaskets are sold separately. Check what gasket and bolts to order depending on base and installation. Refer to the interoperability section of the user manual for installation on a specific base.

## Operating Conditions

<b>Operating temperature</b>	-60 °C to +55 °C / -76 °F to +131 °F
<b>Storage temperature</b>	-60 °C to +80 °C / -76 °F to +176 °F
<b>Humidity</b>	Up to 100%

## Dimensions and Weight

<b>Dimensions</b>	203 mm (8 in)	305 mm (12 in)
<b>Weight</b>	2.8 kg / 6.1 lb (8 in)	6.3 kg / 13.9 lb (12 in)

## ANNEX

### 8- and 12-inch light fixtures without Arctic Kit (heater)

Fixture type – 1 cord set <sup>1</sup>	Fixture load	Isolation transformer		CCR load
		Wattage	Load	
Taxiway Edge, L-852(T), omnidirectional	9.6 VA	15 W	5.1 VA	14.7 VA

### 8- and 12-inch light fixtures with Arctic Kit (heater)

Fixture type - 1 cord set <sup>1</sup>	Fixture load	Isolation transformer		CCR load
		Wattage	Load	
Taxiway Edge, L-852(T), omnidirectional	75.5 VA	65 W	11.5 VA	87 VA

<sup>1</sup>Values provided are for the "S" option non-monitored power only.

#### Note:

- EQ fixtures:
  - The isolation transformer must have an additional 8 VA available above the fixture load for communication bandwidth. Size transformer to next size up to assure additional 8 VA coverage
  - Legacy BRITE II or AGLAS 2 systems — Order "M" power supply
- Fail-open fixtures:
  - The maximum rating for the isolation transformer is 150 W
- Additional voltage loss not included in the above table which must be factored into the circuit load calculation:
  - Primary cables will result in a higher CCR load
  - Longer secondary cables may result in a larger size isolation transformer requirement
- Efficiency of the isolation transformer depends on the manufacturer of the transformer
- See omni user manual UM-5091 for other power supplies

For more information about the product, including manuals and certifications, please see our Product Center on the ADB SAFEGATE website: [www.adbsafegate.com](http://www.adbsafegate.com).