



## **RELIANCE EREL and ERES**

**Elevated LED**

## **Spare Parts List**

**SP-3025 (RoW), Rev. 1.5, 2025/06/03**

**ADB**  
**SAFEGATE**



## A.0 Disclaimer / Standard Warranty

### CE certification

The equipment listed as CE certified means that the product complies with the essential requirements concerning safety and hygiene. The European directives that have been taken into consideration in the design are available on written request to ADB SAFEGATE.

### ETL certification

The equipment listed as ETL certified means that the product complies with the essential requirements concerning safety and C22.2 No.180:13 (R2018) regulations. The CSA directives that have been taken into consideration in the design are available on written request to ADB SAFEGATE.

### All Products Guarantee

ADB SAFEGATE will correct by repair or replacement per the applicable guarantee below, at its option, equipment or parts which fail because of mechanical, electrical or physical defects, provided that the goods have been properly handled and stored prior to installation, properly installed and properly operated after installation, and provided further that Buyer gives ADB SAFEGATE written notice of such defects after delivery of the goods to Buyer. Refer to the Safety section for more information on Material Handling Precautions and Storage precautions that must be followed.

ADB SAFEGATE reserves the right to examine goods upon which a claim is made. Said goods must be presented in the same condition as when the defect therein was discovered. ADB SAFEGATE further reserves the right to require the return of such goods to establish any claim.

ADB SAFEGATE's obligation under this guarantee is limited to making repair or replacement within a reasonable time after receipt of such written notice and does not include any other costs such as the cost of removal of defective part, installation of repaired product, labor or consequential damages of any kind, the exclusive remedy being to require such new parts to be furnished.

ADB SAFEGATE's liability under no circumstances will exceed the contract price of goods claimed to be defective. Any returns under this guarantee are to be on a transportation charges prepaid basis. For products not manufactured by, but sold by ADB SAFEGATE, warranty is limited to that extended by the original manufacturer. This is ADB SAFEGATE's sole guarantee and warranty with respect to the goods; there are no express warranties or warranties of fitness for any particular purpose or any implied warranties of fitness for any particular purpose or any implied warranties other than those made expressly herein. All such warranties being expressly disclaimed.

### Standard Products Guarantee

Products manufactured by ADB SAFEGATE are guaranteed against mechanical, electrical, and physical defects (excluding lamps) which may occur during proper and normal use for a period of two years from the date of ex-works delivery, and are guaranteed to be merchantable and fit for the ordinary purposes for which such products are made.



### Note

See your applicable sales agreement for a complete warranty description.

Replaced or repaired equipment under warranty falls into the warranty of the original delivery. No new warranty period is started for these replaced or repaired products.

### FAA Certified products manufactured by ADB SAFEGATE

ADB SAFEGATE L858 Airfield Guidance Signs are warranted against mechanical and physical defects in design or manufacture for a period of 2 years from date of installation, per FAA AC 150/5345-44 (applicable edition).

ADB SAFEGATE LED products (with the exception of obstruction lighting) are warranted against electrical defects in design or manufacture of the LED or LED specific circuitry for a period of 4 years from date of installation, per FAA EB67 (applicable edition). These FAA certified constant current (series) powered LED products must be installed, interfaced and powered with and through products certified under the FAA Airfield Lighting Equipment Program (ALECP) to be included in this 4 (four) year warranty. This includes, but is not limited to, interface with products such as Base Cans, Isolation Transformers, Connectors, Wiring, and Constant Current Regulators.



## Note

See your sales order contract for a complete warranty description.

Replaced or repaired equipment under warranty falls into the warranty of the original delivery. No new warranty period is started for these replaced or repaired products.

---

## Liability



### WARNING

Use of the equipment in ways other than described in the catalog leaflet and the manual may result in personal injury, death, or property and equipment damage. Use this equipment only as described in the manual.

ADB SAFEGATE cannot be held responsible for injuries or damages resulting from non-standard, unintended uses of its equipment. The equipment is designed and intended only for the purpose described in the manual. Uses not described in the manual are considered unintended uses and may result in serious personal injury, death or property damage.

Unintended uses, includes the following actions:

- Making changes to equipment that have not been recommended or described in this manual or using parts that are not genuine ADB SAFEGATE replacement parts or accessories.
- Failing to make sure that auxiliary equipment complies with approval agency requirements, local codes, and all applicable safety standards if not in contradiction with the general rules.
- Using materials or auxiliary equipment that are inappropriate or incompatible with your ADB SAFEGATE equipment.
- Allowing unskilled personnel to perform any task on or with the equipment.

## Copyright Statement

This manual or parts thereof may not be reproduced, stored in a retrieval system, or transmitted, in any form or by any means, electronic, mechanical, photocopying, recording, nor otherwise, without the author's prior written consent.

This manual could contain technical inaccuracies or typographical errors. The author reserves the right to revise this manual from time to time in the contents thereof without obligation of the author to notify any person of such revision or change. Details and values given in this manual are average values and have been compiled with care. They are not binding, however, and the author disclaims any liability for damages or detriments suffered as a result of reliance on the information given herein or the use of products, processes or equipment to which this manual refers. No warranty is made that the use of the information or of the products, processes or equipment to which this manual refers will not infringe any third party's patents or rights. The information given does not release the buyer from making their own experiments and tests.

# Table of Contents

<b>1.0 Elevated LED .....</b>	<b>1</b>
<b>2.0 Spare Parts.....</b>	<b>3</b>
2.1 Ordering Code EREL and ERES.....	3
2.1.1 Ordering Code .....	0
2.2 Exploded View .....	4
2.3 EREL and ERES Parts.....	5
2.4 Options and Accessories .....	7
2.5 Screws Overview .....	7
<b>A.0 SUPPORT .....</b>	<b>9</b>
A.1 ADB SAFEGATE Website.....	9
A.2 Recycling .....	10
A.2.1 Local Authority Recycling .....	10
A.2.2 ADB SAFEGATE Recycling .....	10

List of Figures

List of Tables

Table 1: Optical components ..... 7

## 1.0 Elevated LED

### ICAO

- Runway Edge for runways up to 60 m wide
- Runway End
- Runway Threshold
- Runway Threshold / End
- Runway Stopway

### FAA

- Runway Edge L-862(L)
- Runway End L-862E(L)
- Runway Threshold L-862E(L)
- Runway Threshold/End L-862E(L)



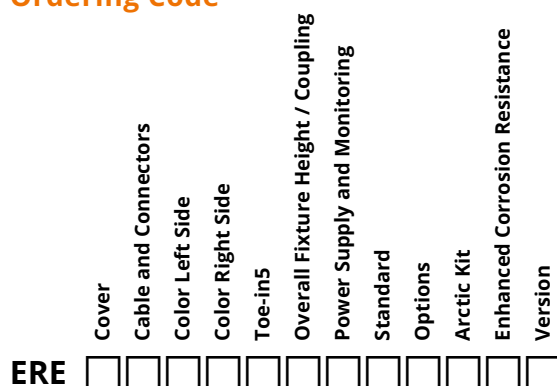




## 2.0 Spare Parts

### 2.1 Ordering Code EREL and ERES

#### Ordering Code



#### Cover

L = UV-resistant polycarbonate

S = Glass

#### Cable and Connectors

2 = 1 FAA L823 plug (2-pins)

6 = 1 plug (2-pins) w/Earth ground

8 = 1 external connected plug (2-pins)<sup>12</sup>

#### Color Left Side

W = White

R = Red

G = Green<sup>34</sup>

Y = Yellow

N = None (Obscured)

#### Color Right Side

W = White

R = Red

G = Green<sup>34</sup>

Y = Yellow

N = None (Obscured)

#### Toe-in<sup>5</sup>

0 = No toe-in<sup>4</sup>

1 = Left side with toe-in

2 = Right side with toe-in

3 = Both sides with toe-in

#### Overall Fixture Height / Coupling

1 = 14 in (35.6 cm) with 1.5" coupling, 12 TPI

2 = 20 in (50.8 cm) with 1.5" coupling, 12 TPI

3 = 24 in (61.0 cm) with 1.5" coupling, 12 TPI

5 = 14 in (35.6 cm) with 2" coupling, 11.5 TPI

6 = 20 in (50.8 cm) with 2" coupling, 11.5 TPI

7 = 24 in (61.0 cm) with 2" coupling, 11.5 TPI

9 = 14 in (35.6 cm) with 2" coupling, 11 TPI<sup>1</sup>

#### Power Supply and Monitoring

S = 6.6A - 50/60 Hz series supply, without monitoring

M = 6.6A - 50/60 Hz series supply, with monitoring

P = IQ0 version<sup>6</sup>

Q = IQ1 version<sup>6</sup>

#### Standard

0 = ICAO- and FAA-compliant<sup>7</sup>

F = FAA (threshold only)

I = ICAO (threshold/end and threshold only)<sup>4</sup>

K = Australian (color to MOS 139)

#### Options

0 = No option

1 = With bracket for snow rod

#### Arctic Kit

0 = Without arctic kit

1 = With arctic kit<sup>8</sup>

#### Enhanced Corrosion Resistance

1 = Included

#### Version

2 = Improved mechanics

#### Ordering Code Notes

<sup>1</sup> Not defined by FAA, hence not ETL Certified.

<sup>2</sup> Cord set connected external to column.

<sup>3</sup> G-green will only be delivered if Standard = K. All other applications will be delivered with F - green (ICAO / FAA).

<sup>4</sup> ICAO / TP312 unidirectional threshold light is always without toe-in. These light fixtures have to be installed with a Toe-in to be compliant to the standards.

<sup>5</sup> Refer to Toe-in Coding diagram for more information.

<sup>6</sup> The IQ functionality allows control and monitoring of the fixture. IQ1 fixtures are preconfigured for the specific position at delivery. This function is disabled in IQ0 fixtures but could be enabled later.

<sup>7</sup> All lights without green beam are compliant to ICAO and FAA. Use 0 for any application (FAA, ICAO, TP 312) that does not use green.

<sup>8</sup> Not with IQ fixtures.

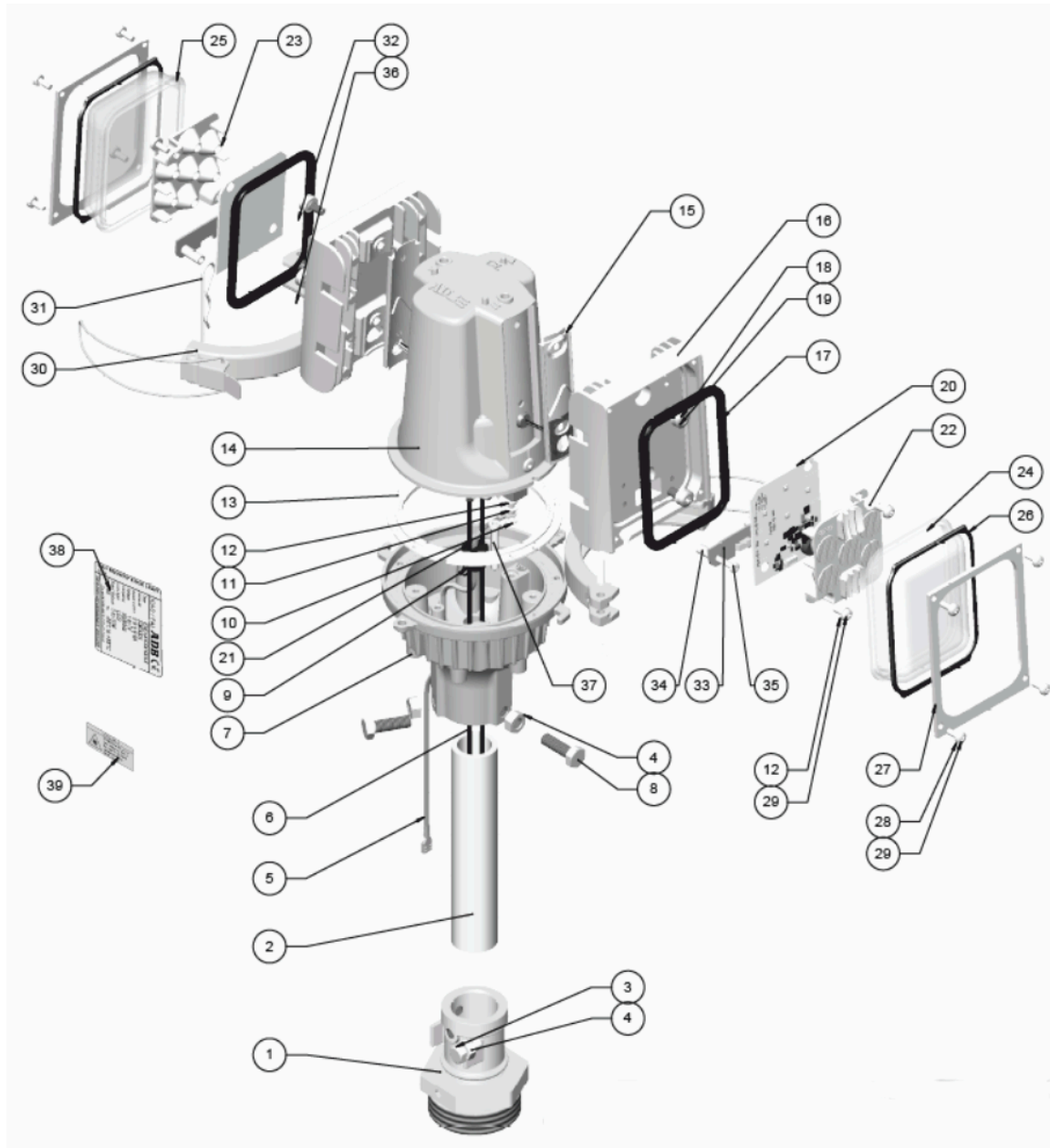


## Note

Additionally please consider the following:

- Code for an ICAO unidirectional threshold light is ERE XX GN0 XX I XX12 , where X must be selected according to the table
- ICAO Stopway is always unidirectional, red and with toe-in
- White and yellow beams are for runway edge application and are always with toe-in
- Red beam may be with toe-in for runway edge application (e.g. displaced threshold) or without toe-in for runway end application
- Green beam is always with toe-in for FAA applications (See note 6 above for ICAO)

## 2.2 Exploded View



## 2.3 EREL and ERES Parts



### NOTICE

For America spares, please refer to Americas product manual UM-3025 (US Version).

Exploded view reference numbers	Components	Versions	Part number
1, 3, 4	Frangible coupling (including screws and nuts)	2" 11 TPI thread less than 30" OAH	SP.4072.65.570
		2" 11.5 TPI thread less than 30" OAH	SP.4072.65.580
		1.5" 12 TPI thread less than 30" OAH	SP.4072.65.550
		2" 11 TPI thread 30" OAH	SP.4072.65.600
		2" 11.5 TPI thread 30" OAH	SP.4072.65.610
		1.5" 12 TPI thread 30" OAH	SP.4072.65.560
2	1" EMT column	for 350 mm OAH light (2" 11 TPI only)	SP.4072.60.340
		for 14" OAH light (not for 2" 11 TPI)	SP.012539
		for 20" OAH light (not for 2" 11 TPI)	SP.012540
		for 24" OAH light (not for 2" 11 TPI)	SP.012541
		for 30" OAH light (not for 2" 11 TPI)	SP.012615
	Optical kit	See the table 'Optical components' below	
3	M8 screw for frangible coupling (30 pcs)		SP.7100.08.647
4	M8 Nut for Alignment screw & Frangible Coupling (30 pcs)		SP.7150.53.260
4, 7, 8, 30, 31, 32, 36, 37	Body support assembly , complete with clips, safety pins and alignment screws		1406.00.666
5	Earthing cable	for 350 mm OAH light (2" 11 TPI only)	SP.011177
		for 14" OAH light (not for 2" 11 TPI)	SP.011178
		for 20" OAH light (not for 2" 11 TPI)	SP.011179
		for 24" OAH light (not for 2" 11 TPI)	SP.011180
		for 30" OAH light (not for 2" 11 TPI)	SP.013051
6	Cable lead	for 350 mm OAH light (2" 11 TPI only)	SP.010611
		for 14" OAH light (not for 2" 11 TPI)	SP.012516
		for 20" OAH light (not for 2" 11 TPI)	SP.012517
		for 24" OAH light (not for 2" 11 TPI)	SP.012518
		for 30" OAH light (not for 2" 11 TPI)	SP.012519
8	Alignment screw M8x25 A2 (30 pcs)		SP.7100.08.655
9	Cable strain relief bushing		SP.011243
11	Flat washer M4 Inox - DIN125 (25pcs)		SP.7283.04.230

Exploded view reference numbers	Components	Versions	Part number
13	Body gasket (25 pcs)		SP.4072.04.621
13, 14	Body with body gasket - no arctic kit	Without monitoring option	SP.010999
		With monitoring option	SP.012967
13, 14	Body with body gasket - with arctic kit	Without monitoring option	SP.012968
		With monitoring option	SP.012969
13, 14	Body IQ with body gasket	With IQ monitoring	SP.013052
15, 16, 18, 19	Cooling block kit (containing cooling block, cooling block gasket, cooling block screws and flat washer)	all versions except FAA L-862E green and except ICAO threshold/end green with toe-in left and right	SP.013053
		FAA L-862E green	SP.011003
		THR side of bidirectional ICAO THR/END fixture (right toe in)	SP.013054
		THR side of bidirectional ICAO THR/END fixture (left toe in)	SP.013055
	Cooling block gasket (10 pcs)		SP.010909
	Cooling block screws (20 pcs)		SP.7125.00.700
	Flat washer to cooling block (20 pcs)		SP.7283.04.470
17	Optical cover gasket (10 pcs)		SP.010904
17, 26, 27, 28, 29	Clip kit for optical cover (kit containing one clip, one spacer, screws, washers and one optical cover gasket) (5 pcs)		1406.00.670
20	Dummy LED board (for the blank side of unidirectional lights)		SP.1590.03.790
26	Optical clip spacer (10 pcs)		SP.4072.47.810
	Optical cover	See the table 'Optical components' below	
28	Spring washer (40pcs)		SP.7284.10.416
29	Screw M4x10 A4+Loc2245 (40 pcs)		SP.7100.10.101
33, 34, 35	Arctic kit (kit containing one heater, two spacers and screws) (not for IQ)		1406.00.680
	Fuse resistor kit (20 resistors) For fixtures with monitoring option		6132.00.250

**Table 1: Optical components**

Exploded view references numbers	Applications	Color	Optical kit including the LED MCPCB and the optical block spacer, screws and washers	Optical cover (glass, 5 pcs ) ref. No. 24 <sup>1</sup>	Optical cover (synthetic, 5 pcs) ref. No. 25 <sup>1</sup>
11, 20, 22, 29	ICAO runway end and FAA L-862E	Red	1406.00.640	SP.010902	SP.010907
	ICAO threshold	Green	1406.00.650	SP.010900	SP.010905
	MOS139 threshold	Green	1406.00.690	SP.010900	SP.010905
11, 20, 23, 29	ICAO runway edge and FAA L-862	White	1406.00.600	SP.010900	SP.010905
		Red	1406.00.610	SP.010902	SP.010907
		Yellow	1406.00.620	SP.010903	SP.010908
	FAA L-862 and FAA L862E	Green	1406.00.630	SP.010901	SP.010906



## NOTICE

ICAO and MOS 139 threshold fixtures are equipped with a transparent optical cover. Use the code of the white lens even if this application emits green light.

## 2.4 Options and Accessories



## Note

The following parts can be ordered separately.

	Details	Article number
A	Alignment tool	1408.35.130
B	Snow rod (10 pcs) (note: the light must be equipped with the optional bracket)	SP.4072.28.670
C	Snow rod bracket assembly (with screws & washers) (10 pcs)	SP.4072.28.570

## 2.5 Screws Overview

Name	Screw type	Quantity on a fixture	Torque (Nm)
Screw for the earthing cable	M4x10 A2-taptite	1	2.5
Alignment screw	M8x25 A2	3	8
Cooling block screw	M6x12	4 (2 on each side)	4.5
Optical block screw	M4x10 A2+loc2245	4 (2 on each side)	1.3
Screws of the optical cover clip	M4x10 A2+loc2245	8 (2 on each side)	2.5

<sup>1</sup>Except for ICAO and MOS139 threshold, all fixtures are equipped with a colored optical cover for daytime recognition.

Name	Screw type	Quantity on a fixture	Torque (Nm)
Arctic kit screws	Plastic screw M4x25	4 (2 on each side)	0.3
Screw to connect the frangible coupling to the column	M8x20 DIN 933 (inox)	2	8

## Appendix A: SUPPORT

Our experienced engineers are available for support and service at all times, 24 hour/7 days a week. They are part of a dynamic organization making sure the entire ADB SAFEGATE is committed to minimal disturbance for airport operations.

### ADB SAFEGATE Support

#### Technical Support – Global

Customers in Europe, the Middle East, Africa or Asia Pacific are more than welcome to our portal for technical support. Trained in all areas of system issues, troubleshooting, quality control and technical assistance, our highly experienced Technical support specialists are available 24 hours a day, seven days a week to provide assistance over the phone. In the Americas, we also offer live technical support.

#### Live Technical Support – Americas

If at any time you have a question or concern about your product, contact ADB SAFEGATE's US-based technical support specialists, available 24 hours a day, seven days a week, to assist you via phone.

ADB SAFEGATE Americas Technical Service & Support (US & Canada) : **+1-800-545-4157**

ADB SAFEGATE Americas Technical Service & Support (Canada): **+1-905-631-1597**

ADB SAFEGATE Americas Technical Service & Support (International): **+1-614-861-1304**

We can also be reached via email during regular business hours:

Airfield and Gate: **techservice.us@adbsafegate.com**

Gate: **gateservice.us@adbsafegate.com**

We look forward to working with you!

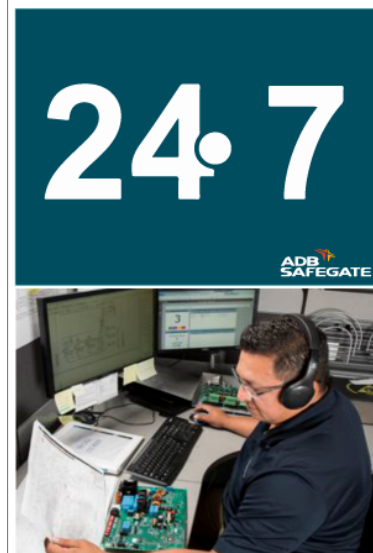
#### Before You Call

When you have an airfield lighting or system control system problem, prior to calling, please ensure the following:

- Review the product's manual and troubleshooting guide.
- Be located with the product ready to troubleshoot.
- Have all necessary information available: airport code/company name, customer id number, contact phone number/email address, product/part number.
- Have a True RMS meter available and any other necessary tools.

When calling about an issue with Safedock A-VDGS, we can serve you better if you collect the following information before you call:

- Relevant information regarding the issue you are calling about, such as gate number, flight number, aircraft type and time of the event.
- What, if any, actions have been taken to resolve the issue prior to the call.
- If available, provide a CCTV recording of the incident to aid in aligning the information from the Safedock log file.



### Note

For more information, see [www.adbsafegate.com](http://www.adbsafegate.com), contact ADB SAFEGATE Support via email at [support@adbsafegate.com](mailto:support@adbsafegate.com) or Europe: +32 2 722 17 11

Americas: +1 614 861 1304. Press 3 for technical service or press 4 for sales support.

China: +86 (10) 8476 0106

Middle East and Africa: +971 4 452 7575

## A.1 ADB SAFEGATE Website

The ADB SAFEGATE website, [www.adbsafegate.com](http://www.adbsafegate.com), offers information regarding our airport solutions, products, company, news, links, downloads, references, contacts and more.

## A.2 Recycling

### A.2.1 Local Authority Recycling

The disposal of ADB SAFEGATE products is to be made at an applicable collection point for the recycling of electrical and electronic equipment. The correct disposal of equipment prevents any potential negative consequences for the environment and human health, which could otherwise be caused by inappropriate waste handling. The recycling of materials helps to conserve natural resources. For more detailed information about recycling of products, contact your local authority city office.

### A.2.2 ADB SAFEGATE Recycling

ADB SAFEGATE is fully committed to environmentally-conscious manufacturing with strict monitoring of our own processes as well as supplier components and sub-contractor operations. ADB SAFEGATE offers a recycling program for our products to all customers worldwide, whether or not the products were sold within the EU.

ADB SAFEGATE products and/or specific electrical and electronic component parts which are fully removed/separated from any customer equipment and returned will be accepted for our recycling program.

All items returned must be clearly labeled as follows:

- For RoHS/WEEE Recycling
- Sender contact information (Name, Business Address, Phone number).
- Main Unit Serial Number.

ADB SAFEGATE will continue to monitor and update according for any future requirements for EU directives as and when EU member states implement new regulations and or amendments. It is our aim to maintain our compliance plan and assist our customers.





# Empowering the Airside **Evolution**



[adbsafegate.com](http://adbsafegate.com)

Copyright ©