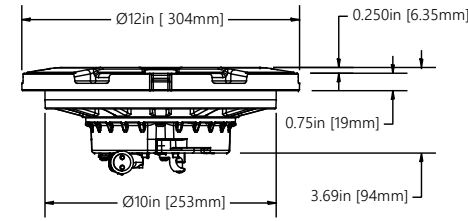
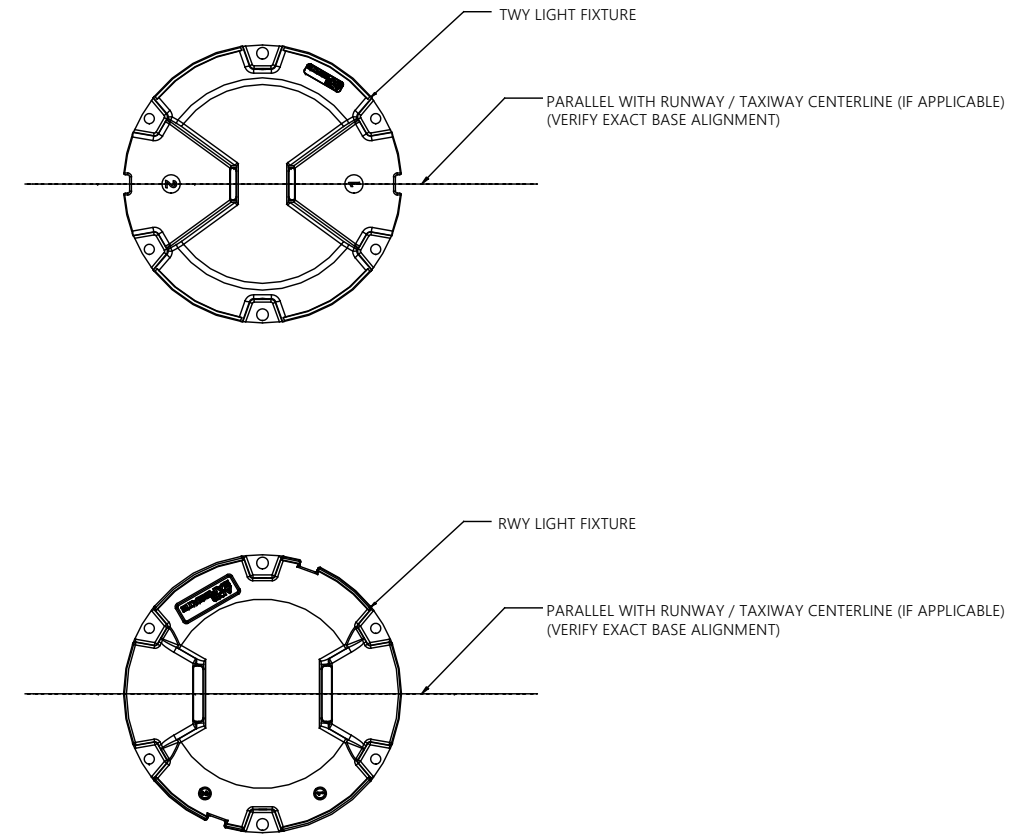
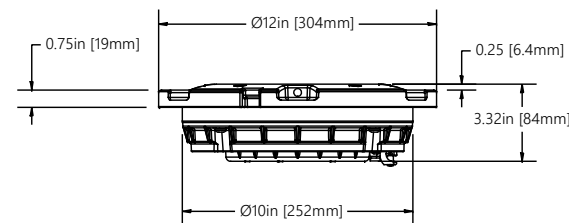


- 2" GROMMET OR 2" THREADED HUB OPENINGS AT 0-180° (TYP.)
PROJECT SPECIFICATIONS WILL DEFINE:
- TYPE (GROMMET OR THREADED HUB)
 - SIZE
 - LOCATION IN DEGREES

1 PIECE BASE INSTALLATION



TWY REFERENCE DIMENSIONS



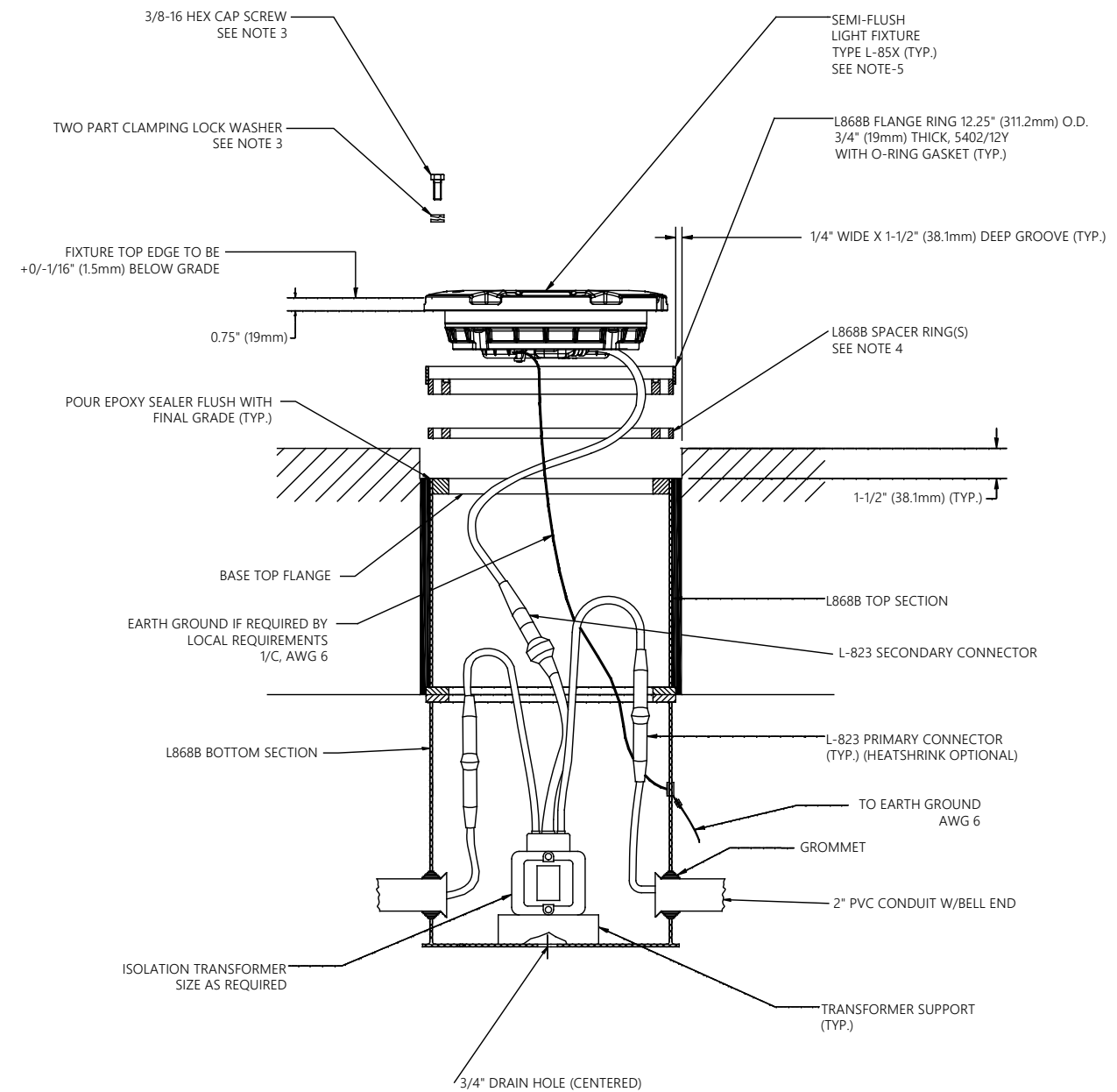
RWY REFERENCE DIMENSIONS

LIGHT DETAIL NOTES:

1. LIGHT BASES SHALL BE INSTALLED PER A/C 150/5340-30 (LATEST REVISION) AND/OR PROJECT SPECIFIC DETAIL(S) TO ASSURE VERTICAL & AZIMUTH ALIGNMENT OF FIXTURE.
2. PROVIDE 2'-3" (600-900mm) CABLE SLACK WITHIN LIGHT BASE TO ALLOW TRANSFORMER SERVICING.
3. REFER TO FAA ENGINEERING BRIEF 83 (LATEST REVISION) FOR INSTALLATION REQUIREMENTS OF THE MOUNTING BOLTS, WASHERS, AND TORQUE GUIDANCE.
4. A MAXIMUM OF THREE SPACER RINGS MAY BE STACKED TOGETHER TO ACHIEVE FIXTURE INSTALLTION TOLERANCE OF +0/-0.0625". THE COUNT OF 3 INCLUDES THE FLANGE RING.
5. ADB SAFEGATE AXON MODEL OR EQUAL, STYLE 3 LOW PROFILE.

CONTROLLED COPY			
Unauthorized duplication of this document in whole or part is prohibited. Initialed in RED ink below indicates authorized copy.			
INITIAL & DATE: _____			
ADB SAFEGATE			
P.O. Box 30829		Tel: (614) 861-1304	
977 Gahanna Parkway		Fax: (614) 864-2069	
Columbus, OH 43230			
DRAWING TITLE: AXON SERIES IN-PAVEMENT FIXTURE INSTALLATION			
A	---	INITIAL RELEASE	CS 25JAN23
REV LEVEL	ECO NUMBER	REVISION DESCRIPTION	DRAWN BY REV DATE
ASSOCIATED DRAWINGS:	DRAWN BY:	DRAWN DATE:	
	CS	25JAN23	
Information contained on this drawing is to be used expressly in accord with purpose for which it was submitted. Any disclosure of this information is strictly prohibited except as ADB SAFEGATE, Inc. may otherwise agree in writing. Copyright ©2010 ADB SAFEGATE.			
SCALE: N/A		SHEET NUMBER: 1 OF 2	
DRAWING NUMBER: DA00036-000-01			REV: A

CAUTION:
THIS DRAWING IS ONLY INTENDED FOR USE AS GENERAL AIRFIELD SYSTEM DESIGN GUIDANCE. THE DESIGNER MUST VERIFY DESIGN WITH LOCAL CODES AND VARYING CHARACTERISTICS FOR EACH UNIQUE AIRFIELD APPLICATION.



2 PIECE BASE INSTALLATION

LIGHT DETAIL NOTES:

1. LIGHT BASES SHALL BE INSTALLED WITH CARE TO ASSURE VERTICAL & AZIMUTH ALIGNMENT OF FIXTURE.
2. PROVIDE 2'-3" (600-900mm) CABLE SLACK WITHIN LIGHT BASE TO ALLOW TRANSFORMER SERVICING.
3. REFER TO FAA ENGINEERING BRIEF 83 (LATEST REVISION) FOR RECOMMENDED INSTALLATION REQUIREMENTS INCLUDING BOLT, WASHER, AND TORQUE GUIDANCE.
4. AS REQUIRED TO MAINTAIN +0/-1/16" (1.5mm) BELOW GRADE FAA INSTALLATION TOLERANCE. A MAXIMUM OF THREE SPACER RINGS MAY BE STACKED TOGETHER, INCLUDING FLANGE RING.
5. ADB SAFEGATE PART {44AXXXX/XXXX, ITCF-XXXXX0, IRGL-XXXX0} OR EQUAL, STYLE 3 LOW PROFILE.

"EXAMPLE" SEQUENCE OF WORK:

- STEP 1**
ELECTRICAL CONTRACTOR LOCATES NEW LIGHT BASES AND INTERCONNECTING CONDUIT TRENCH, AND EXCAVATES FOR LIGHT BASE BOTTOM SECTION BY SAW CUTTING OR CORE DRILLING. ELECTRICAL CONTRACTOR PREPARES SUBGRADE AND STONE SUBBASE, SETS BOTTOM SECTION WITH REBAR, RIGID STEEL CONDUIT STUBS AND DRAIN, AND POURS HIGH EARLY STRENGTH CONCRETE-ENCASEMENT EXCAVATION. ELECTRICAL CONTRACTOR SHALL RECORD CAN LOCATIONS AND ELEVATIONS OF MUD PLATE AFTER CONCRETE-ENCASEMENT.
- ELECTRICAL CONTRACTOR EXCAVATES CONDUIT TRENCH, INSTALLS RIGID STEEL AND FITTINGS, BACKFILLS CONDUIT TRENCH WITH HIGH EARLY STRENGTH CONCRETE.
- STEP 2**
GENERAL CONTRACTOR PREPARES AND INSTALLS CONCRETE PAVEMENT. ELECTRICAL CONTRACTOR MAKES A PILOT CORE TO FIND MUD PLATE CENTER POINT INDENT BEFORE FINAL CORE-DRILLING.
- STEP 3**
ELECTRICAL CONTRACTOR CORE-DRILLS CONCRETE PAVEMENT. ELECTRICAL CONTRACTOR INSTALLS TOP SECTION, Y-FLANGE RING, SPACE AND LIGHTING FIXTURE, AND POURS EPOXY JOINT SEALER. PROVIDE SPACE FOR ADJUSTMENT WITH SPACERS, MAXIMUM NUMBER OF SPACERS SHALL BE 3.

CAUTION:
THIS DRAWING IS ONLY INTENDED FOR USE AS GENERAL AIRFIELD SYSTEM DESIGN GUIDANCE. THE DESIGNER MUST VERIFY DESIGN WITH LOCAL CODES AND VARYING CHARACTERISTICS FOR EACH UNIQUE AIRFIELD APPLICATION.

				CONTROLLED COPY	
				Unauthorized duplication of this document in whole or part is prohibited. Initialed in RED ink below indicates authorized copy.	
				INITIAL & DATE: _____	
				ADB SAFEGATE	
				P.O. Box 30829 Tel: (614) 861-1304 977 Gahanna Parkway Fax: (614) 864-2069 Columbus, OH 43230	
				DRAWING TITLE: AXON SERIES IN-PAVEMENT FIXTURE INSTALLATION	
A	----	INITIAL RELEASE	CS	25JAN23	
REV LEVEL	ECO NUMBER	REVISION DESCRIPTION	DRAWN BY	REV DATE	
			CS	25JAN23	
Information contained on this drawing is to be used expressly in accord with purpose for which it was submitted. Any disclosure of this information is strictly prohibited except as ADB SAFEGATE, Inc. may otherwise agree in writing. Copyright ©2010 ADB SAFEGATE.				SCALE: N/A	SHEET NUMBER: 2 OF 2
				DRAWING NUMBER: DA00036-000-01	REV: A