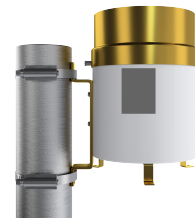


WEATHER

Rain Gauge

Model 6022



Overview

The Model 6022 Tipping Bucket Rain Gauge is a freestanding receptacle for measuring precipitation. It contains an open top, which allows precipitation to fall into the upper portion, called the collector. The collector funnel is made of gold-anodized aluminum. Collected water is funneled to a tipping bucket, which fills up and causes a momentary closure of a magnetic switch once the tipping bucket fills to the point where it tips over. This empties the bucket in preparation for additional measurements. The discharged water passes out of the rain gauge with no need for emptying.

The rain gauge may be connected to an event counter on a data logger or to a display such as offered by an AWOS to show and log accumulated precipitation.

The aluminum housing is finished with a white powder-coat to withstand years of exposure to the environment.

Features

- Interfaces to virtually all data acquisition systems
- Knife-edge collector optimizes rainfall catch
- Splash-out protection and screen reduce wind errors
- Easy installation and maintenance
- Integrated bubble level
- Lightweight aluminum exterior with anodized aluminum collector for weather resistance
- Unheated Model 6012 available for use in areas without snow or freezing rain

Electrically Heated Rain & Snow Gauges

Model 6022 Tipping Bucket Rain Gauges are heated electrically to facilitate their use in areas where snow or freezing rain may occur. These models allow the water equivalent of all types of precipitation, including snow and freezing rain, to be measured and logged. Two low-power heating elements are controlled thermostatically with an additional thermal overload. The heaters allow the rain gauge to be used year-round while at the same time minimizing the amount of evaporation.

Ordering Information

Part Number	Description
6012-A ¹	Unheated Tipping Bucket Rain Gauge
6022-A	Heated Tipping Bucket Rain Gauge
60103	Rain Gauge Calibrator

Specifications

Parameter	Specification		
	6012-A	6022-A	
Sensor Type	Tipping Bucket		
Switch	Potted magnetic momentary-contact reed switch		
Output	135 ms switch closure		
Sensitivity	1 tip per 0.01"		
Resolution	0.01" (0.25 mm)		
Calibrated Accuracy	±1% (0–2"/h)		
Precipitation Measurement Rate	0–700 mm/h (0–27"/h)		
Collector Orifice	154 mm (6.060")		
Heaters	Collector	—	71 W
	Housing	—	127 W
Thermostat Set Point	—	7°C (45°F)	
Heater Power	—	120 VAC, 1.65 A	
Environmental			
Operating Temperature	0 to +70°C (-65 to +158°F)	-40 to +70°C (-40 to +158°F)	
Storage Temperature	-54 to +85°C (-65 to +185°F)		
Relative Humidity	0–100%, noncondensing		

Dimensions & Weights

Dimensions (without feet or pole mounting arm)	Rain Gauge	28.0 cm × 16.3 cm (10.25" H × 6.4" D)
	Heater Service Box	6.3 cm × 6.3 cm × 5.5 cm (2.5" H × 2.5" W × 2.2" D)
Product Weight	3.2 kg (7.0 lb)	

¹ For use in areas without snow or freezing rain