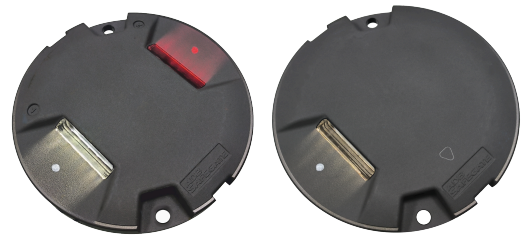


RELIANCE 2

LED ICAO Runway Centerline and Touchdown Zone

Uni and Bidirectional Inset, 8-inch



Compliance with Standards

ICAO	Annex 14, Volume 1
NATO	STANAG 3316
IEC	61827
EASA	CS-ADR-DSN
STAC	SPE/STAC/SE/E/VIS/6008
UK	CAP 168
UFC	3-535-01
Canada	TP 312
Australia	MOS 139
China	CAAC
CE	

Uses

ICAO

- Runway centerline
- Touchdown zone

Features and Benefits

Efficiency

- Available in three versions:
 - RELIANCE IQ with integrated intelligence
 - RELIANCE with integrated fail - open (Mon) technology. Fuse resistors are part of the Mon - functionality and spares need to be ordered separately
 - RELIANCE Non-MON, non-monitored lights
- Precision aimed optics enhancing photometric performance and complementing extended LED life
- Reduced bottom pan profile allowing for very shallow base can installation
- LED pulse width modulated (PWM) at 400 Hz optimizing LED performance and eliminating perceptible flicker to a moving human observer throughout the range of brightness steps
- Operates at all steps of constant current regulator technologies designed in compliance with IEC or FAA requirements
- Fully dimmable lights, conforming to the dimming curve of traditional halogen lights
- Low protrusion, high-intensity, Style 3 (≤ 6.35 mm) inset light fixtures
- No negative slope in front of the prisms

Sustainability

- Fully encapsulated all-in-one universal power supplies for Runway, Taxiway, Approach and Omni inset families
- Latest generation LEDs providing a long-lasting light source with high efficiency and low power consumption
- Reinforced top cover substantially exceeding standards to improve durability and longevity (directional beams only)
- One single family of fixtures covering all runway, taxiway and approach applications
- IP68 rated enclosure designed for harsh environments; all fastenings are stainless steel
- Compatible with existing infrastructure allowing for direct replacement of existing LED inset fixtures

Safety

- Improved mechanical design to strengthen and consolidate components, improving the customer maintenance experience
- Failed LED detection as required by Engineering Brief 67D
- Robust lightning protection complying with ANSI/IEEE C62.41-1991; Location Category C2 as required by FAA Engineering Brief 67 Category C2 is defined as a 1.2/50 μ S - 8/20 μ S combination wave, with a peak voltage of 10,000 V and a peak current of 5,000 A

RELIANCE 2

Ordering Code

Application	Standard(s)	Market Specific	Dimensions	Prism	Beam Orientation	Toe-in	Color - Side 1 (Left)	Color - Side 2 (Right)	Power and Monitoring	Connector and Cable	Options	Version
LS												

Application

RC = ICAO Runway Centerline
RZ = ICAO Touchdown Zone

Standard(s)

3 = ICAO¹

Market Specific

2 = Anodized Finish

Dimensions

1 = 8 inch (203 mm) diameter, 2 bolt

Prism

S = Standard prism

Beam Orientation

1 = Unidirectional
2 = Bidirectional

Toe-in

L = Left Side Toe-in (Unidirectional - for RZ only)²
R = Right Side Toe-in (Unidirectional - for RZ only)²
N = None

Color - Side 1 (Left)

W = White
R = Red

Color - Side 2 (Right)

W = White
R = Red
N = None (Unidirectional only)

Power and Monitoring

S = 2.8 - 6.6 A, Non-Monitored — Power Only³
M = 2.8 - 6.6 A, Fail-Open Monitoring³
P = 2.8 - 6.6 A IQ0 Integrated (IQ disabled)⁵
Q = 2.8 - 6.6 A IQ1 Integrated (IQ enabled)⁵

Connector and Cable

1 = 1 x Style 6 2-Pole Plug, 2 Individual Wires
3 = 2 x Style 6 2-Pole Plug, 2 Individual Wires⁴
5 = 1 x Flat 3-Pole Plug, 3 Individual Wires
6 = 2 x Flat 3-Pole Plug, 3 Individual Wires⁴

Options

0 = None

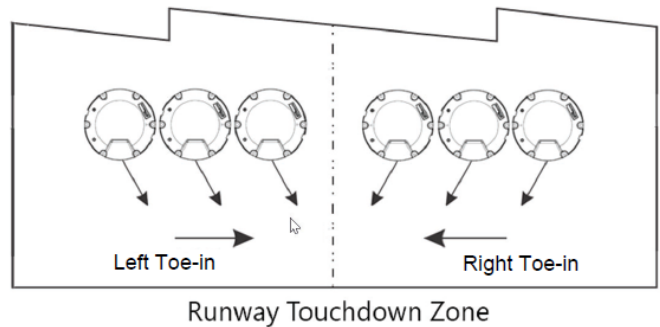
Version

1 = Version 1

Ordering Code Notes

1. Includes standards NATO, EASA, STAC, CAP 168, TP 312, CAAC and MOS 139.
2. L and R designations are always in relationship to side 1 only.
3. 2-cordset option available.
4. Only available in digit 13 options S and M and bi-directional configuration.
5. The IQ functionality allows control and monitoring of the RELIANCE IQ. IQ1 fixtures are pre-configured for the specific position at delivery. This function is disabled in IQ0 fixtures but could be enabled later. IQ light fixtures are only available as one connector option.

Toe-in



Power Supply Options

- Non-monitored — power only
- Monitored — integrated fail-open technology
- IQ with integrated ILCMS remote for RELIANCE IL

Installation and Maintenance

The light fixture can be installed in an 8-inch base or a 12-inch base with an adapter ring. Gaskets are sold separately. Refer to the user manual INTEROPERABILITY appendix to identify the correct gasket and bolts for your specific base and ensure a reliable fit.

RELIANCE 2

Operating Conditions

Operating temperature	-55 °C to +55 °C / -67 °F to +131 °F
Storage temperature	-60 °C to +80 °C / -76 °F to +176 °F
Humidity	Up to 100%

Dimensions and Weight

Dimensions	203 mm (8 in)
Weight	3 kg / 6.6 lb (8 in)

ANNEX

8-inch light fixtures

Fixture type – 1 cord set ¹	Fixture load	Isolation transformer		CCR load
		Wattage	Load	
Runway centerline, bidirectional	34.9 VA	45 W	14.2 VA	49.1 VA
Touchdown zone, unidirectional	25.5 VA	25 W	7.2 VA	32.7 VA

¹Values provided are for the "S" option non-monitored power only.

Note:

- IQ fixtures:
 - The minimum rating (dimension) for the isolation transformer is 65 W
 - The isolation transformer must have an additional 12 VA available above the fixture load for communication bandwidth. Size transformer to next size up to assure additional 12 VA coverage
- Fail-open fixtures:
 - The maximum rating for the isolation transformer is 150 W (a correctly calibrated CCR is important to achieve an accurate fail open response)
- Additional voltage loss not included in the above table which must be factored into the circuit load calculation:
 - Primary cables will result in a higher CCR load
 - Longer secondary cables may result in a larger size isolation transformer requirement
- Efficiency of the isolation transformer depends on the manufacturer of the transformer
- See user manual for other power supplies

For more information about the product, including manuals and certifications, please see our Product Center on the ADB SAFEGATE website: www.adbsafegate.com.