



RELIANCE L-861T Elevated Taxiway Edge LED (ETES) Light

User Manual

96A0321, Rev. Q, 2023/02/07



A.0 Disclaimer / Standard Warranty

CE certification

The equipment listed as CE certified means that the product complies with the essential requirements concerning safety and hygiene. The European directives that have been taken into consideration in the design are available on written request to ADB SAFEGATE.

ETL certification

The equipment listed as ETL certified means that the product complies with the essential requirements concerning safety and FAA Airfield regulations. The FAA directives that have been taken into consideration in the design are available on written request to ADB SAFEGATE.

All Products Guarantee

ADB SAFEGATE will correct by repair or replacement per the applicable guarantee above, at its option, equipment or parts which fail because of mechanical, electrical or physical defects, provided that the goods have been properly handled and stored prior to installation, properly installed and properly operated after installation, and provided further that Buyer gives ADB SAFEGATE written notice of such defects after delivery of the goods to Buyer. Refer to the Safety section for more information on Material Handling Precautions and Storage precautions that must be followed.

ADB SAFEGATE reserves the right to examine goods upon which a claim is made. Said goods must be presented in the same condition as when the defect therein was discovered. ADB SAFEGATE further reserves the right to require the return of such goods to establish any claim.

ADB SAFEGATE's obligation under this guarantee is limited to making repair or replacement within a reasonable time after receipt of such written notice and does not include any other costs such as the cost of removal of defective part, installation of repaired product, labor or consequential damages of any kind, the exclusive remedy being to require such new parts to be furnished.

ADB SAFEGATE's liability under no circumstances will exceed the contract price of goods claimed to be defective. Any returns under this guarantee are to be on a transportation charges prepaid basis. For products not manufactured by, but sold by ADB SAFEGATE, warranty is limited to that extended by the original manufacturer. This is ADB SAFEGATE's sole guarantee and warranty with respect to the goods; there are no express warranties or warranties of fitness for any particular purpose or any implied warranties of fitness for any particular purpose or any implied warranties other than those made expressly herein. All such warranties being expressly disclaimed.

Standard Products Guarantee

Products manufactured by ADB SAFEGATE are guaranteed against mechanical, electrical, and physical defects (excluding lamps) which may occur during proper and normal use for a period of two years from the date of ex-works delivery, and are guaranteed to be merchantable and fit for the ordinary purposes for which such products are made.



Note

See your applicable sales agreement for a complete warranty description.

Replaced or repaired equipment under warranty falls into the warranty of the original delivery. No new warranty period is started for these replaced or repaired products.

FAA Certified products manufactured by ADB SAFEGATE

ADB SAFEGATE L858 Airfield Guidance Signs are warranted against mechanical and physical defects in design or manufacture for a period of 2 years from date of installation, per FAA AC 150/5345-44 (applicable edition).

ADB SAFEGATE LED products (with the exception of obstruction lighting) are warranted against electrical defects in design or manufacture of the LED or LED specific circuitry for a period of 4 years from date of installation, per FAA EB67 (applicable edition). These FAA certified constant current (series) powered LED products must be installed, interfaced and powered with and through products certified under the FAA Airfield Lighting Equipment Program (ALECP) to be included in this 4 (four) year warranty. This includes, but is not limited to, interface with products such as Base Cans, Isolation Transformers, Connectors, Wiring, and Constant Current Regulators.



Note

See your sales order contract for a complete warranty description.

Replaced or repaired equipment under warranty falls into the warranty of the original delivery. No new warranty period is started for these replaced or repaired products.

Liability



WARNING

Use of the equipment in ways other than described in the catalog leaflet and the manual may result in personal injury, death, or property and equipment damage. Use this equipment only as described in the manual.

ADB SAFEGATE cannot be held responsible for injuries or damages resulting from non-standard, unintended uses of its equipment. The equipment is designed and intended only for the purpose described in the manual. Uses not described in the manual are considered unintended uses and may result in serious personal injury, death or property damage.

Unintended uses, includes the following actions:

- Making changes to equipment that have not been recommended or described in this manual or using parts that are not genuine ADB SAFEGATE replacement parts or accessories.
- Failing to make sure that auxiliary equipment complies with approval agency requirements, local codes, and all applicable safety standards if not in contradiction with the general rules.
- Using materials or auxiliary equipment that are inappropriate or incompatible with your ADB SAFEGATE equipment.
- Allowing unskilled personnel to perform any task on or with the equipment.

© ADB SAFEGATE SWEDEN AB

This manual or parts thereof may not be reproduced, stored in a retrieval system, or transmitted, in any form or by any means, electronic, mechanical, photocopying, recording, nor otherwise, without ADB SAFEGATE SWEDEN AB's prior written consent.

This manual could contain technical inaccuracies or typographical errors. ADB SAFEGATE SWEDEN AB reserves the right to revise this manual from time to time in the contents thereof without obligation of ADB SAFEGATE SWEDEN AB to notify any person of such revision or change. Details and values given in this manual are average values and have been compiled with care. They are not binding, however, and ADB SAFEGATE SWEDEN AB disclaims any liability for damages or detriments suffered as a result of reliance on the information given herein or the use of products, processes or equipment to which this manual refers. No warranty is made that the use of the information or of the products, processes or equipment to which this manual refers will not infringe any third party's patents or rights. The information given does not release the buyer from making their own experiments and tests.

© ADB SAFEGATE BV

This manual or parts thereof may not be reproduced, stored in a retrieval system, or transmitted, in any form or by any means, electronic, mechanical, photocopying, recording, nor otherwise, without ADB SAFEGATE BV's prior written consent.

This manual could contain technical inaccuracies or typographical errors. ADB SAFEGATE BV reserves the right to revise this manual from time to time in the contents thereof without obligation of ADB SAFEGATE BV to notify any person of such revision or change. Details and values given in this manual are average values and have been compiled with care. They are not binding, however, and ADB SAFEGATE BV disclaims any liability for damages or detriments suffered as a result of reliance on the information given herein or the use of products, processes or equipment to which this manual refers. No warranty is made that the use of the information or of the products, processes or equipment to which this manual refers will not infringe any third party's patents or rights. The information given does not release the buyer from making their own experiments and tests.

TABLE OF CONTENTS

1.0 Safety	1
1.1 Safety Messages	1
1.1.1 Introduction to Safety	2
1.1.2 Intended Use	2
1.1.3 Material Handling Precautions: Storage	3
1.1.4 Operation Safety	3
1.1.5 Maintenance Safety	3
1.1.6 Material Handling Precautions, ESD	4
2.0 RELIANCE L-861T Elevated Taxiway Edge LED (ETES) Light	5
2.1 About this manual	5
2.2 How to work with the manual	5
3.0 RELIANCE ETES-L Introduction	7
3.1 Taxiway Edge, L-861T(L)	7
4.0 RELIANCE ETES Installation	9
4.1 Installation Safety Considerations	9
4.2 Introduction	9
4.2.1 Unpacking	9
4.3 Placement	9
4.4 Installation Procedures	9
4.4.1 Base Mounting	10
4.4.2 Light Base Mounting	10
4.4.3 Light Fixture Leveling	11
4.4.4 Stake Mounting	12
5.0 Maintenance Introduction	15
5.1 Maintenance Schedule	15
5.1.1 Assembly Instructions	15
6.0 Ordering Code	17
7.0 Troubleshooting	19
7.1 Troubleshooting Procedures	19
7.2 Repair	19
7.2.1 Access to Internal Components	20
7.2.2 LED and Arctic Kit or Electronic Module Replacement	20
7.2.3 Cord Set Replacement	21
7.2.4 Glassware and Gasket Seal Replacement	21
7.2.5 Replacement of Existing Fixture	21
8.0 RELIANCE ETES Parts	23
8.1 L-861T Optional Stake Assembly Parts List	27
8.2 Optional Parts	27
8.3 Retrofit Charts	28
8.3.1 LED Replacement Charts	29
8.4 RELIANCE ETES Spare Parts	31
A.0 SUPPORT	33
A.1 ADB SAFEGATE Website	33
A.2 Recycling	33
A.2.1 Local Authority Recycling	33
A.2.2 ADB SAFEGATE Recycling	34

List of Figures

Figure 1: ETES Installation in a Base Example	11
Figure 2: Stake Assembly	12
Figure 3: RELIANCE ETES Assembly	23
Figure 4: L-861T ETES Fixture (part 1 of 2)	24
Figure 5: L-861T ETES Fixture (part 2 of 2)	24
Figure 6: L-861T ETES Fixture and L-861T ETES (without heater)	25
Figure 7: L-861T ETES (with heater)	26
Figure 8: Stake Assembly	27
Figure 9: ETES LED Retro Fit Chart to Rev J and After 1/15/08	28
Figure 10: ETES LED Retro Fit Chart Prior to 1/15/08 Rev J	29

List of Tables

Table 1: L-861T Light Fixture Maintenance 15

Table 2: Main Components Parts Not Shown List 25

Table 3: ETES Replacement Chart For ETES/XXXX REV J CHANGE 29

Table 4: Replacement Kits 30

Table 5: ETES-L Spare Parts 31

1.0 Safety

Introduction to Safety







This section contains general safety instructions for installing and using ADB SAFEGATE equipment. Some safety instructions may not apply to the equipment in this manual. Task- and equipment-specific warnings are included in other sections of this manual where appropriate.

1.1 Safety Messages


HAZARD Icons used in the manual

For all HAZARD symbols in use, see the Safety section. All symbols must comply with ISO and ANSI standards.

Carefully read and observe all safety instructions in this manual, which alert you to safety hazards and conditions that may result in personal injury, death or property and equipment damage and are accompanied by the symbol shown below.

	WARNING Failure to observe a warning may result in personal injury, death or equipment damage.
	DANGER - Risk of electrical shock or ARC FLASH Disconnect equipment from line voltage. Failure to observe this warning may result in personal injury, death, or equipment damage. ARC Flash may cause blindness, severe burns or death.
	WARNING - Wear personal protective equipment Failure to observe may result in serious injury.
	WARNING - Do not touch Failure to observe this warning may result in personal injury, death, or equipment damage.
	CAUTION Failure to observe a caution may result in equipment damage.
	ELECTROSTATIC SENSITIVE DEVICES This equipment may contain electrostatic devices.

Qualified Personnel

	Important Information The term qualified personnel is defined here as individuals who thoroughly understand the equipment and its safe operation, maintenance and repair. Qualified personnel are physically capable of performing the required tasks, familiar with all relevant safety rules and regulations and have been trained to safely install, operate, maintain and repair the equipment. It is the responsibility of the company operating this equipment to ensure that its personnel meet these requirements. Always use required personal protective equipment (PPE) and follow safe electrical work practice.
---	--

1.1.1 Introduction to Safety



CAUTION

Unsafe Equipment Use

This equipment may contain electrostatic devices, hazardous voltages and sharp edges on components

- Read installation instructions in their entirety before starting installation.
- Become familiar with the general safety instructions in this section of the manual before installing, operating, maintaining or repairing this equipment.
- Read and carefully follow the instructions throughout this manual for performing specific tasks and working with specific equipment.
- Make this manual available to personnel installing, operating, maintaining or repairing this equipment.
- Follow all applicable safety procedures required by your company, industry standards and government or other regulatory agencies.
- Install all electrical connections to local code.
- Use only electrical wire of sufficient gauge and insulation to handle the rated current demand. All wiring must meet local codes.
- Route electrical wiring along a protected path. Make sure they will not be damaged by moving equipment.
- Protect components from damage, wear, and harsh environment conditions.
- Allow ample room for maintenance, panel accessibility, and cover removal.
- Protect equipment with safety devices as specified by applicable safety regulations
- If safety devices must be removed for installation, install them immediately after the work is completed and check them for proper functioning prior to returning power to the circuit.

Failure to follow this instruction can result in serious injury or equipment damage

Additional Reference Materials



Important Information

- IEC - International Standards and Conformity Assessment for all electrical, electronic and related technologies.
- IEC 60364 - Electrical Installations in Buildings.
- FAA Advisory: AC 150/5340-26 (current edition), Maintenance of Airport Visual Aid Facilities.
- Maintenance personnel must refer to the maintenance procedure described in the ICAO Airport Services Manual, Part 9.
- ANSI/NFPA 79, Electrical Standards for Metalworking Machine Tools.
- National and local electrical codes and standards.

1.1.2 Intended Use



CAUTION

Use this equipment as intended by the manufacturer

This equipment is designed to perform a specific function, do not use this equipment for other purposes

- Using this equipment in ways other than described in this manual may result in personal injury, death or property and equipment damage. Use this equipment only as described in this manual.

Failure to follow this instruction can result in serious injury or equipment damage

1.1.3 Material Handling Precautions: Storage



CAUTION

Improper Storage

Store this equipment properly

- If equipment is to be stored prior to installation, it must be protected from the weather and kept free of condensation and dust.

Failure to follow this instruction can result in equipment damage

1.1.4 Operation Safety



CAUTION

Improper Operation

Do Not Operate this equipment other than as specified by the manufacturer

- Only qualified personnel, physically capable of operating the equipment and with no impairments in their judgment or reaction times, should operate this equipment.
- Read all system component manuals before operating this equipment. A thorough understanding of system components and their operation will help you operate the system safely and efficiently.
- Before starting this equipment, check all safety interlocks, fire-detection systems, and protective devices such as panels and covers. Make sure all devices are fully functional. Do not operate the system if these devices are not working properly. Do not deactivate or bypass automatic safety interlocks or locked-out electrical disconnects or pneumatic valves.
- Protect equipment with safety devices as specified by applicable safety regulations.
- If safety devices must be removed for installation, install them immediately after the work is completed and check them for proper functioning.
- Route electrical wiring along a protected path. Make sure they will not be damaged by moving equipment.
- Never operate equipment with a known malfunction.
- Do not attempt to operate or service electrical equipment if standing water is present.
- Use this equipment only in the environments for which it is rated. Do not operate this equipment in humid, flammable, or explosive environments unless it has been rated for safe operation in these environments.
- Never touch exposed electrical connections on equipment while the power is ON.

Failure to follow these instructions can result in equipment damage

1.1.5 Maintenance Safety



DANGER

Electric Shock Hazard

This equipment may contain electrostatic devices

- Do not operate a system that contains malfunctioning components. If a component malfunctions, turn the system OFF immediately.
- Disconnect and lock out electrical power.
- Allow only qualified personnel to make repairs. Repair or replace the malfunctioning component according to instructions provided in its manual.

Failure to follow these instructions can result in death or equipment damage

1.1.6 Material Handling Precautions, ESD



CAUTION

Electrostatic Sensitive Devices

This equipment may contain electrostatic devices

- Protect from electrostatic discharge.
- Electronic modules and components should be touched only when this is unavoidable e.g. soldering, replacement.
- Before touching any component of the cabinet you shall bring your body to the same potential as the cabinet by touching a conductive earthed part of the cabinet.
- Electronic modules or components must not be brought in contact with highly insulating materials such as plastic sheets, synthetic fiber clothing. They must be laid down on conductive surfaces.
- The tip of the soldering iron must be grounded.
- Electronic modules and components must be stored and transported in conductive packing.

Failure to follow this instruction can result in equipment damage

2.0 RELIANCE L-861T Elevated Taxiway Edge LED (ETES) Light

The RELIANCE ETES-L LED elevated light fixture is used to define the edges of airport taxiways and has an average LED life of 100,000 hours under high-intensity conditions and more than 180,000 hours under typical operating conditions, resulting in significant reduction or even elimination of ongoing maintenance costs and periodic re-lamping expenses. The RELIANCE ETES-L with arctic option prevents ice and snow buildup from obscuring light output; it melts ice similar to the way a traditional incandescent fixture does. Not only is the light ideal for wintry conditions, but for optimal visibility during the day because of the blue optical outer lens. 10/15 W and 20/25 W isolation transformers are available for use with RELIANCE ETES-L fixtures to match fixture load for optimal efficiency. A standard 30/45W isolation transformer may also be used.



2.1 About this manual

The manual shows the information necessary to:

- Install
- Carry Out Maintenance
- Carry Out Troubleshooting on the ETES, in the manual referred to as the equipment.

2.2 How to work with the manual

- Familiarize yourself with the structure and content.
- Carry out the actions completely and in the given sequence.

3.0 RELIANCE ETES-L Introduction

See [Figure 3](#). This section describes the ADB SAFEGATE RELIANCE L-861T elevated taxiway edge LED (ETES) light.

See [Figure 4](#) for the main items in the assembly. Typical installation is on a L-867 light base. The housing assembly includes the electronic package.

The optional mounting is stake mounted on a 30-inch galvanized steel stake. The fixtures can also be mounted on a base plate for a 12- or 16-inch diameter L-867 base with 1-1/2-inch NPS or a special 2-inch NPT frangible reducer coupling for an existing installation that has 2-inch NPT hubs in the base plate. Base mounting is recommended because maintenance is easier to perform. Stake-mounted lights require transformers, cables, and connectors that are designed for direct earth burial.

3.1 Taxiway Edge, L-861T(L)

Compliance with Standards

FAA:	L-861T(L) AC 150/5345-46 (Current Edition) and the FAA Engineering Brief No. 67. ETL Certified.
ICAO:	Annex 14, Vol. 1, para. 5.3.17; 5.3.18 (for photometry) Chromaticity - Appendix 1, Section 2.3.1 (Blue LED) Frangibility - Section 5.3.1.6
CE:	Complies with the requirements of the EMC Directive 2014/30/EU

Uses

Taxiway edge fixture is used to delineate the edges of airport taxiways.

FAA

- Taxiway Edge L-861(L)

ICAO

- Taxiway Edge

Power Supply

Current Driven

RELIANCE LED lights have been designed to work with any IEC or FAA-compliant transformer up to 100 W without affecting performance or lifetime of the light or the transformer.

Optional monitoring function of the individual light source. In case of a defect, the LED light automatically disconnects from the secondary side of the isolation transformer, resulting in an open circuit condition.

ETES Fixture w/ heater	Fixture Load	Isolation Transfmr.	Isol. XF Load	CCR Load
Off	12 VA	20/25 W	7.5 VA	19.5 VA
Off	12 VA	30/45 W	8.4 VA	20.4 VA
On	25 VA	20/25 W	7.5 VA	32.5 VA
On	25 VA	30/45 W	9 VA	34 VA
ETES Fixture w/out heater	Fixture Load	Isolation Transfmr.	Isol. XF Load	CCR Load
Off	12 VA	10/15 W	3 VA	15 VA
Off	12 VA	30/45 W	8.4 VA	20.4 VA

Voltage Driven

Input voltage:	95 VAC (min.) - 264 VAC (max.), 50/60 Hz
Maximum input power (w/out heater):	10.2 VA
Maximum input power (w/heater):	25.2 VA at 120 VAC

Ordering Code Notes

¹ Not Submitted for ETL testing.

² When powered by a parallel circuit, heater is designed for use at only 120 VAC, +/- 10%, 50/60Hz.

³ Configuration sold with no column and no coupling.

⁴ Normally used in metric applications.

⁵ If digit 7 = M, digit 9 must be = C.

4.0 RELIANCE ETES Installation

4.1 Installation Safety Considerations



WARNING

Electric Shock

Read installation instructions in their entirety before starting installation.

- Become familiar with the general safety instructions in this section of the manual before installing, operating, maintaining or repairing this equipment.
- Read and carefully follow the instructions throughout this manual for performing specific tasks and working with specific equipment.
- Follow all applicable safety procedures required by your company, industry standards and government or other regulatory agencies.
- Install all electrical connections to local code.
- Use only electrical wire of sufficient gauge and insulation to handle the rated current demand. All wiring must meet local codes.
- Route electrical wiring along a protected path. Make sure they will not be damaged by moving equipment.

Failure to follow these warnings may result in serious injury or equipment damage.

4.2 Introduction

This section provides instructions for installing the L-861T medium intensity elevated light fixture. Refer to the airport project plans and specifications for the specific installation instructions.

4.2.1 Unpacking

The equipment is shipped ready for installation. Handle equipment very carefully to prevent component damage. Unpack the carton upon receipt and check the contents and their condition. Note any exterior damage to the carton that might lead to detection of equipment damage.

If you note any damage to any equipment, file a claim with the carrier immediately. The carrier may need to inspect the equipment.

4.3 Placement

This subsection describes the placement of the L-861T light fixtures.

Follow the guidelines below, along with FAA specification AC 150/5340-30 and site plans, when placing the L-861T light fixture.

- The L-861T light fixture is normally positioned a maximum of 10 feet (3.048 m) off the edge of the hard surface of the taxiway, and in a straight line with all other light fixtures on the straight sections of the taxiways.
- The longitudinal spacing of the light fixtures should not exceed 200 feet (60.96 m) to define the lateral limits of the taxiing paths. The longitudinal spacing of the lights is influenced by the physical layout of the taxiways.
- Closer spacing of the lights should be provided on short taxiway sections, curves, and entrances to taxiways from runways or aprons.

4.4 Installation Procedures

This subsection provides installation instructions for the L-861T light fixtures.

4.4.1 Base Mounting

L-861T light fixtures can be mounted on an L-867 base plate with a diameter and bolt-hole corresponding to either a 12-inch- (304.8 mm-) diameter L-867B base or a 16-inch- (406.4 mm-) diameter L-867D base plate per FAA AC 150/5345-46. The base plate is designed to receive a frangible coupling using a male thread. The standard coupling thread is 1-1/2" -12 TPI. The optional thread is 2"-11 TPI NPS. A gasket is supplied with the base plate to form a watertight seal between the base plate and the L-867 light base per FAA AC 150/5345-42.

- Install the base according to FAA Advisory Circular AC 150/5340-30 and site plans.

4.4.2 Light Base Mounting

To install the base, perform the following procedure:

- Install the L-867 base on undisturbed soil. If the soil is unsuitable, remove soil to an adequate depth and replace with compacted acceptable material.
- Use light bases having a drain hole to prevent water accumulation, In closed duct systems and install in soil conditions with good drainage.
- Orient the cable entrance hubs of the light base in the proper directions according to site plans.
- Level the light base so that the mounting flange surface is level with the finished grade.
- With the base at the proper orientation and held at proper elevation, place approximately 4-inches (101.6 mm) of concrete back-fill around the outside base.
- If the concrete back-fill is omitted, the earth back-fill must be compacted to maintain proper elevation and orientation of the base.
- Slope the top of the concrete away from the flange portion of the base so the sloped outer edges of the concrete are at surface grade.
- Connect the field circuit to the appropriate isolation transformer. Refer to Power Supply.
- Use a brick to raise the transformer about 3 inches above the bottom surface of the L-867 light base to avoid the possibility of the transformer being partially immersed in water in case water accumulates above the level of the ducts or pipes.

After you have connected the transformer, check the continuity of the series loop.

- Wrap the connector joints in the primary circuit with at least one layer of rubber or synthetic rubber tape and one layer of plastic tape one-half lapped, extending at least 1-1/2 inches (3.81 cm) on each side of the joint.
- Clamp the female secondary plug from the isolation transformer to the L-867 base plate fitting using the clamp device supplied with the base plate.
- Attach the base plate ([Figure 1](#)) with the base plate gasket to the L-867 base using six 3/8-16 stainless steel bolts. Apply a drop of Loctite number 243 to each bolt thread, and use a torque wrench to torque bolts down to 100/110 inch-pounds (11.3 N•m).
- Once the base plate has been installed the light fixture assembly is ready to install.
- Connect the male L-823 plug ([Figure 2](#)) from the light fixture to the female plug on the secondary lead of the isolation transformer by first loosening the frangible coupling hex screw ([Figure 2](#)) until the coupling is free. Then retighten the hex screw finger-tight.

- Plug the L-823 into the mating isolation transformer secondary lead.
- Loosen the hex screw on the coupling to free the coupling. Hand screw the coupling into the base plate hub. Finish tightening the coupling with a wrench. Torque to 75 in-lbs (8.5 N•m).



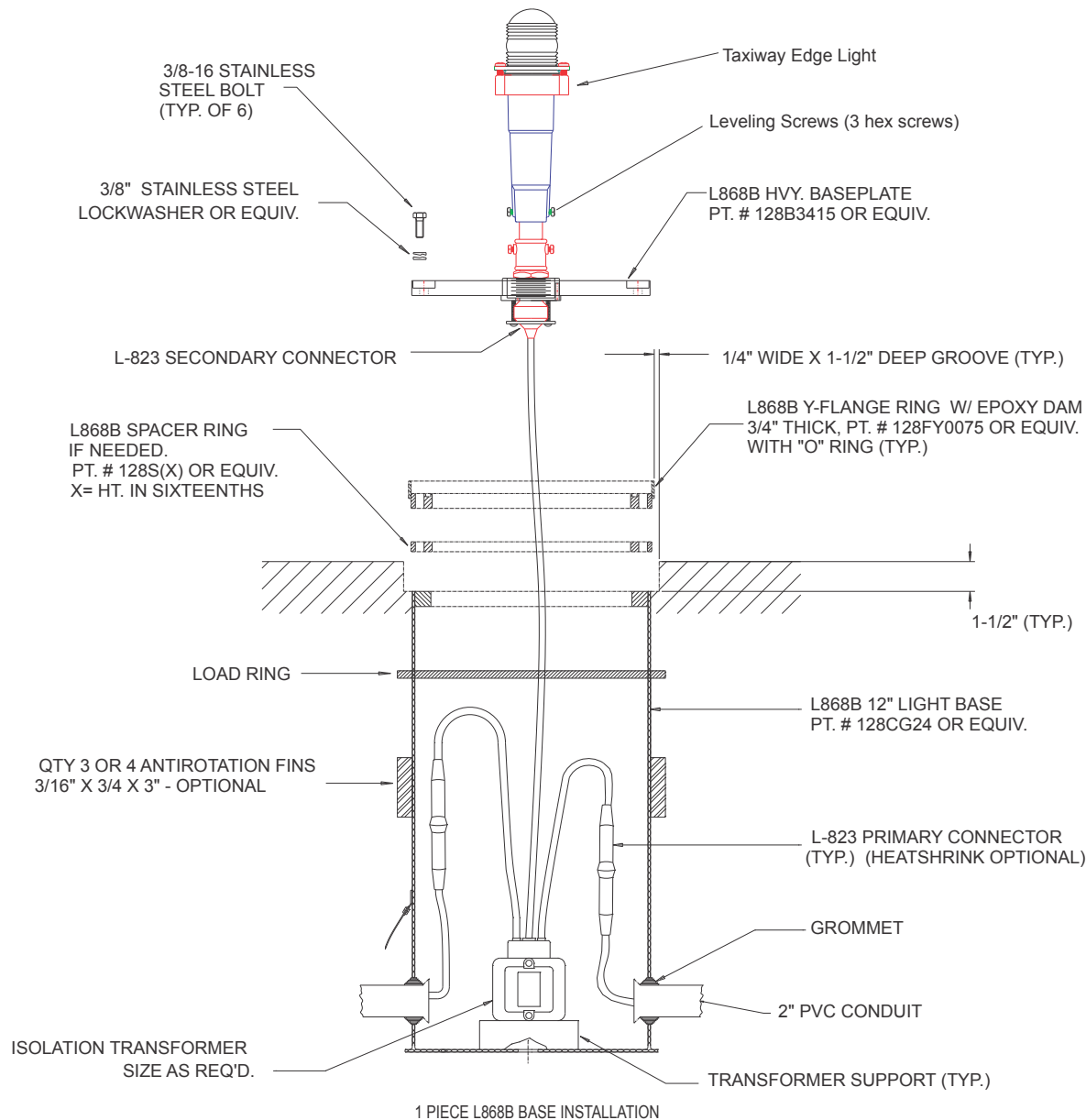
WARNING

Do not tighten the coupling if the coupling hex screw is still tight.

- Failure to follow these instructions will damage the L-823 connection to the transformer.

- Tighten the coupling screw that secures the column to the frangible coupling and the adjustable head.
- Level the light fixture. Refer to Light Fixture Leveling.

Figure 1: ETES Installation in a Base Example



4.4.3 Light Fixture Leveling

Level the light fixture only after mounting it on the base.

To level the light fixture, perform the following procedure:

- See Figure 2. Slightly loosen the three hex screws in the bottom of the housing.
- Place a level on top of the housing rotate housing until level. Tighten the three hex screws to lock in place.
- Torque to 75 in-lbs (8.5 N•m).

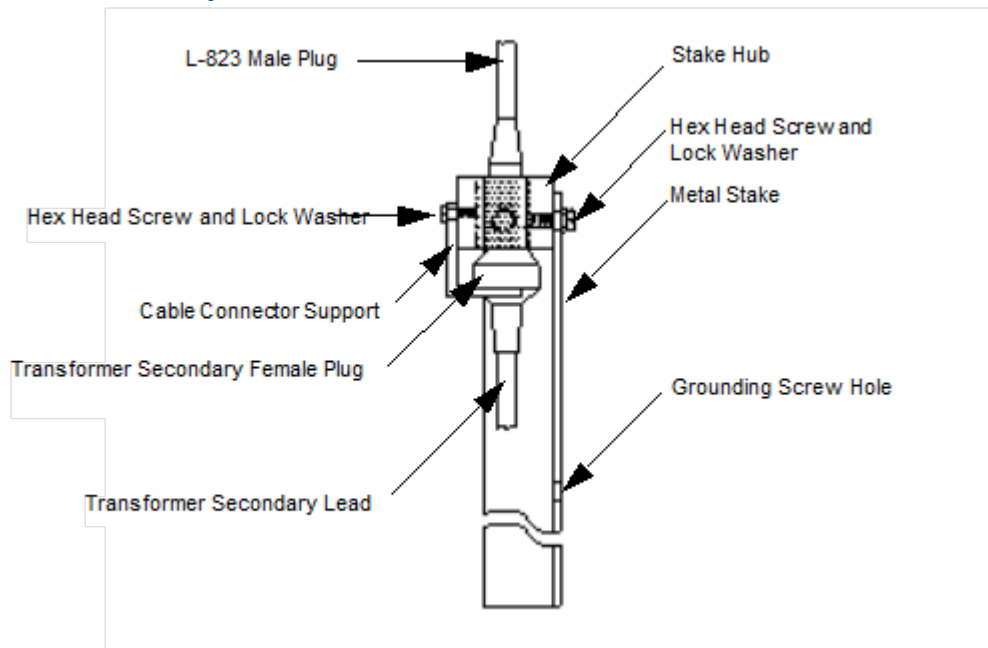
4.4.4 Stake Mounting

Mount the column light fixtures on 30-inch (762-mm) galvanized steel stakes with a fitting attached to the top of each stake to receive the male thread of the frangible coupling. Stake mounting requires cables and connections that are designed for direct earth burial. Install according to appropriate FAA and local contractor specifications.

To mount the L-861T light fixture on a stake, perform the following procedure:

Assemble the stake by attaching the stake hub (2) to the metal stake (5) using two 3/8-16 x 3/4-in. hex head screws (3) and 3/8-in. lock washers (4).

Figure 2: Stake Assembly



1. Install the stake in 6-inch (152.4-mm) diameter holes in the ground at a depth of 30 inches (762 mm) so that the mounting hub of the stake is level.
2. The top of the stake should be even with the ground within one degree of the vertical. In areas where frost may cause heaving, anchor the stake with concrete and use a permeable backfill material such as sand around the buried electrical components. Cover the top surface with an impervious material to reduce moisture penetration.



WARNING

Do not drive stakes. Driving stakes may damage the stake and cause light fixture misalignment. Refer to FAA specification AC 150/5340-30.

- Failure to follow these instructions may damage the stake.

3. Backfill around the stake with compacted earth passing a 1-inch (25.4 mm) sieve.
4. Use a bubble level or carpenter's level to ensure the stake is vertical before backfilling around stake. Backfill with concrete in case of unstable soil conditions.
5. Make electrical connections by installing the transformer primary cables to the field circuit. Then insert the transformer secondary plug in the cable connector supports' forked tine and attach the cable connector support to the stake hub using 1/4 - 20 x 3/4-in. hex head screw and 1/4-in. split lock washer.

6. The small hole at the lower end of the stake is provided for a counterpoise wire connection.
7. Install the light fixture on the stake.

5.0 Maintenance Introduction

This section provides maintenance information for the L-861T LED elevated light.

5.1 Maintenance Schedule

To keep the L-861T light fixtures operating efficiently, follow a preventive maintenance schedule. Refer to Table 6. Refer to FAA AC 150/5340-26 for more detailed information.

Table 1: L-861T Light Fixture Maintenance

Interval	Maintenance Task	Action
Weekly	Check for vegetation.	Remove vegetation. Use weed killer.
Monthly	Check for misaligned fixture.	Straighten, level, and align.
	Check for dirty optical column.	Clean with glass cleaner.
	Check for dirty frangible coupling weep holes (for stake-mounted fixtures only).	Clean weep holes.
Annually	Check for improper ground elevation.	Grade so frangible point is approximately 1 inch (25.4 mm) above ground elevation.
	Check for improper light elevation.	Maintain same elevation for all light fixtures.
	Check for corrosion present or paint loose or chipped.	Scrape and repaint.
	Check for chipped paint on exterior body and fixture.	Touch up paint as necessary.
Unscheduled	Make prediction of heavy snowfall, if necessary.	Use red flags or sticks to mark the location of fixtures to facilitate snow removal and lessen the chance of damage to fixtures by snow removal equipment.

5.1.1 Assembly Instructions

- The L-861T ETES elevated light is assembled at the factory. Use the assembly instructions below when you need to disassemble/ assemble parts for repair or maintenance purposes.

To assemble parts, perform the following procedure:

See Figure 2 and repair/replace components in “ETES Parts”. Also see the “Spare Parts”.

- Apply a light coat of anti-seize compound on the locking ring threads to make assembly and disassembly easier.
- Insert the cord through the column and the frangible coupling and secure both with the hex screws. See [LED and Arctic Kit or Electronic Module Replacement](#).

6.0 Ordering Code

Ordering Code

ETES /

LED Color

- 1 = Blue (Glass)
- 2 = Red (special applications only)¹
- 3 = White (special applications only)¹
- 4 = Green (special applications only)¹
- 5 = Yellow (special applications only)¹
- 6 = Blue (UV-resistant Polycarbonate)

Fixture Height

- R = ICAO <350mm OAH with 2-inch coupling, 11.5 TPI^{1,4}
- W = ICAO <350mm OAH with 2-inch coupling, 11 TPI^{1,4}
- 0 = 14" OAH without coupling^{1,3}
- 1 = 14" OAH with 1.5 - inch coupling, 12 TPI
- 2 = 24" OAH with 1.5 - inch coupling, 12 TPI
- 3 = 30" OAH with 1.5 - inch coupling, 12 TPI
- 4 = 14-inch OAH with 2-inch coupling, 11.5 TPI
- 5 = 24-inch OAH with 2-inch coupling, 11.5 TPI
- 6 = 30-inch OAH with 2-inch coupling, 11.5 TPI
- 7 = 14-inch OAH with 2-inch coupling, 11 TPI^{1,4}
- 8 = 24-inch OAH with 2-inch coupling, 11 TPI^{1,4}
- 9 = 30-inch OAH with 2-inch coupling, 11 TPI^{1,4}
- A = No column or frangible coupling, Style 6 cord¹
- B = 14" OAH with 1.5-inch slot coupling¹
- C = 24" OAH with 1.5-inch slot coupling¹
- D = 30" OAH with 1.5-inch slot coupling¹
- E = 14" OAH with 1.5" x 2" slot coupling, 11.5 TPI¹
- F = 24" OAH with 1.5" x 2" slot coupling, 11.5 TPI¹
- G = 30" OAH with 1.5" x 2" slot coupling, 11.5 TPI¹
- H = No column or frangible coupling, Style 1 cord^{1,3}
- L = 14" OAH with 2-inch coupling, 11.5 TPI, 22" cordset
- M = 18" OAH with 1.5" x 2" slot coupling, 11.5 TPI¹
- N = 18" OAH with 1.5-inch coupling
- P = 18" OAH with 2-inch coupling, 11.5 TPI
- Q = 18" OAH with 2-inch coupling, 11 TPI^{1,4}
- S = 20" OAH with 1.5-inch coupling
- T = 20" OAH with 1.5-inch slot coupling¹
- U = 20" OAH with 2-inch coupling, 11 TPI^{1,4}
- V = 20" OAH with 2-inch coupling, 11.5 TPI
- Z = 16" OAH with 1.5- inch coupling, 12 TPI

Power

- 1 = Current Driven, 50/60 Hz
- M = Current Driven, Monitored 50/60hz^{1,5}
- 3 = 95-264 VAC, 50/60 Hz
- A = APS Advanced Power Supply

Arctic Option

- 0 = Without Arctic Option
- 1 = With Arctic Option²

Version

- C = ROW Version
- = Not used for Buy American Preference

Ordering Code Notes

¹ Not Submitted for ETL testing.

² When powered by a parallel circuit, heater is designed for use at only 120 VAC, +/- 10%, 50/60Hz.

³ Configuration sold with no column and no coupling.

⁴ Normally used in metric applications.

⁵ If digit 7 = M, digit 9 must be = C.

7.0 Troubleshooting



WARNING

Allow only qualified personnel to perform the following tasks. Observe and follow the safety instructions in this document and all other related documentation.
De-energize the circuit and lock out the circuit or regulator so that the circuit cannot be energized by remote means before attempting to service the fixture.
Failure to follow these instructions may cause equipment damage or, severe injury or death.

Introduction

This section contains troubleshooting information for the L-861T light fixture. This information covers only the most common problems that you may encounter. If you cannot solve the problem with the information given here, contact your local ADB SAFEGATE representative for help.

7.1 Troubleshooting Procedures

Refer below for troubleshooting procedures for the L-861T LED elevated light.

Problem	Possible Cause	Corrective Action
1. LED not lighting	Defective electronic module	Replace the electronic module.
	Loose wire connections	Tighten wire connections.
	Deteriorated wire insulation	Replace wires.
	Moisture present in fixture	Open and dry the fixture. Inspect the glassware for cracks. Replace the electronic module, seals, and damaged glassware assembly.
2. LED too dim	Dirty Glassware	Clean the glass lens.
	LED or electronic module failed	Replace the LED or the electronic module.
3. Ice forming on lens	Defective or missing arctic kit	Remove the glassware assembly and check to see if heating element is installed. If missing or defective install new arctic kit. See "Spare Parts" on page 26 .

7.2 Repair



WARNING

Allow only qualified personnel to perform the following tasks. Observe and follow the safety instructions in this document and all other related documentation.
De-energize the circuit and lock out the circuit or regulator so that the circuit cannot be energized by remote means before attempting to service the fixture.

- Failure to follow these instructions may cause equipment damage or, severe injury or death.

Introduction

This section provides instructions for repairing the L-861T LED (ETES) light fixture. It includes replacing the L-861T LED electronic module, the arctic kit, the L-823 cord set, and the Glassware or Polycarbonate Lens Assembly. Section also covers replacing an existing L861T incandescent fixture with an L-861T LED fixture.

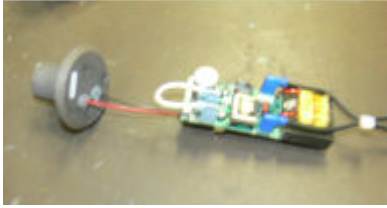


CAUTION

The LED, arctic kit, and electronic module are not repairable. Failed items can only be replaced.
When servicing the internal components do not loosen and remove the screws that hold the glassware in place.
To remove the glassware assembly simply grasp the collar below the glassware and turn counter clockwise and unscrew the assembly off of the housing.

7.2.1 Access to Internal Components

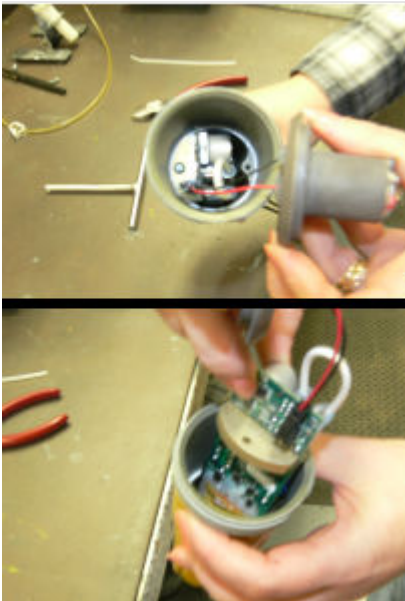
Accessing the internal components is achieved by removing the fixture from the field by performing the following procedure:



- De-energize and lock out the circuit.
- Remove the light fixture from the mounting base by performing the following procedure:
- See [LED and Arctic Kit or Electronic Module Replacement](#). Loosen the hex bolt that attaches the frangible coupling to the column.
- Remove the frangible coupling from the base plate female thread.
- Disconnect the L-823 plug of the light fixture from the female plug on the secondary lead of the isolation transformer.
- Remove the glassware assembly, by rotating it counterclockwise.

7.2.2 LED and Arctic Kit or Electronic Module Replacement

- **If the LED or arctic kit must be removed/replaced proceed as follows:** grasp the LED assembly and gently lift the assembly out of the housing. Separate the electrical disconnects (1 connection if LED only, 3 connections if arctic kit is installed). If replacement is necessary see "ETES Parts".



- **If the electronic module must be removed/replaced proceed as follows:** Remove LED components as described above then locate and remove the two screws attaching the electronic module to the housing and remove the electronic

module and the cord set assembly. The L-823 cord set will fit through the clearance hole in the housing. If replacement is necessary see "ETES Parts".

- Separate the disconnect between the electronic module and the cord set assembly.

7.2.3 Cord Set Replacement

- **If the L-823 cord set must be removed/replaced** remove the LED and electronic module as described above and then proceed as follows: Replace the L-823 cord set. If replacement is necessary see "ETES Parts".
- After parts have been removed/replaced reassembly the items in reverse order and reinstall the Glassware Assembly. Conduct necessary tests to confirm that fixture works properly. Reinstall the Glassware Assembly. The fixture is now ready to be reinstalled on the base plate.
- Level the reinstalled light fixture. Refer to "Light Fixture Leveling".

7.2.4 Glassware and Gasket Seal Replacement

- All items in the Glassware Assembly is replaceable. ADB Safegate recommends that if the glass is broken replace both



gaskets along with the new glassware. If gaskets are leaking replace both gaskets.

- Remove the Glassware Assembly by unscrewing the assembly from the body. Remove the two socket button head screws from the locking ring and then remove the Lens Attachment Ring by slipping it up and off of the glassware.
- If glassware is broken or cracked discard and install new glassware. When installing new glassware replace both gasket seals at the same time.
- the position of the gasket against the lens before removing. The gasket sets at an angle when installed properly against the sloped surface of the outer flange of the glassware.
- Peel the lower gasket off of the lock ring and replace with a new gasket.
- After the upper glassware gasket has been installed all of the components are now ready to be reassembled together. BEFORE assembling parts, locate the beveled edge of the center hole in the Lens Attachment Ring. The beveled edge must be placed against the Lens Bearing Pad gasket. Slip the Attachment Ring over the glassware and place it against the pad gasket.
- Align the holes in the attachment ring with the mating tapped holes in the lock ring and insert the two button head screws. Tighten the two screws evenly to prevent glassware from breaking. Torque the two screws to 25 +/- 5 In-Lbs.
- The assembly is now ready to be reinstalled onto the fixture body.

7.2.5 Replacement of Existing Fixture

Replacing Existing Fixture with L-861T ETES Fixture

This subsection provides two procedures for replacing the existing quartz or incandescent light fixture with the L-861T LED fixture:

- Replacing existing light fixture and isolation transformer and
- Replacing only the existing light fixture.

Replacing Existing Light Fixture: The preferred method is replacing the existing light fixture and reusing the existing 30/45W, L8 30-1 transformer.

- Remove the existing L-861T light fixture and leave the isolation transformer in the light base.
- Plug the LED fixture into the secondary of the L830 isolation transformer. Seal the isolation transformer secondary joint according to local airport practice.
- Mount and level the new L-861T LED fixture.

8.0 RELIANCE ETES Parts

To order parts, call ADB SAFEGATE Customer Service or your local representative. Use this four-column parts list, and the accompanying illustration, to describe and locate parts correctly.

Figure 3: RELIANCE ETES Assembly

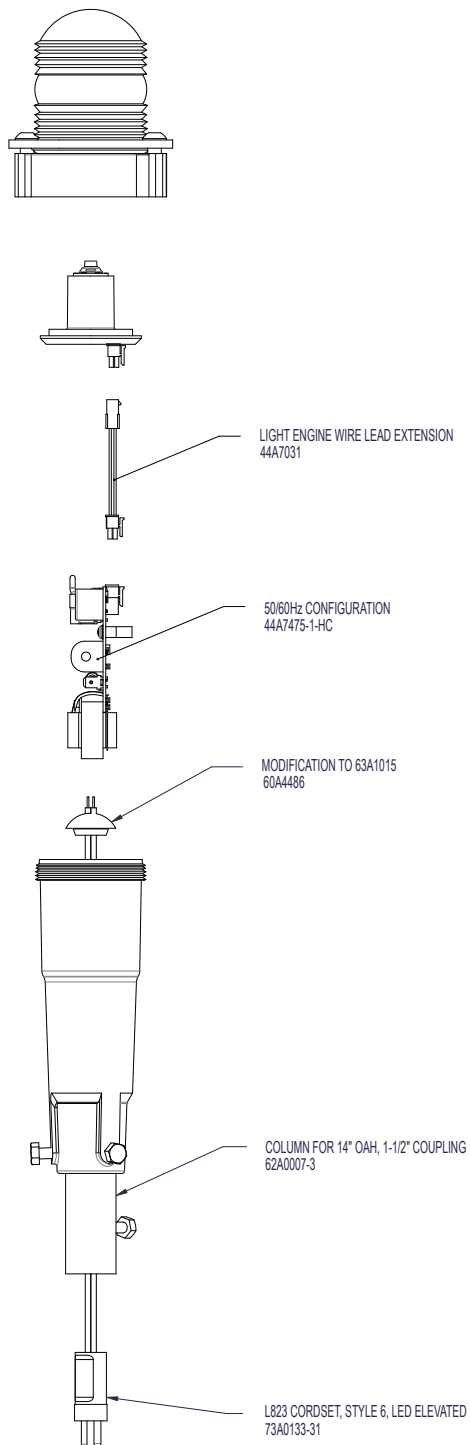


Figure 4: L-861T ETES Fixture (part 1 of 2)

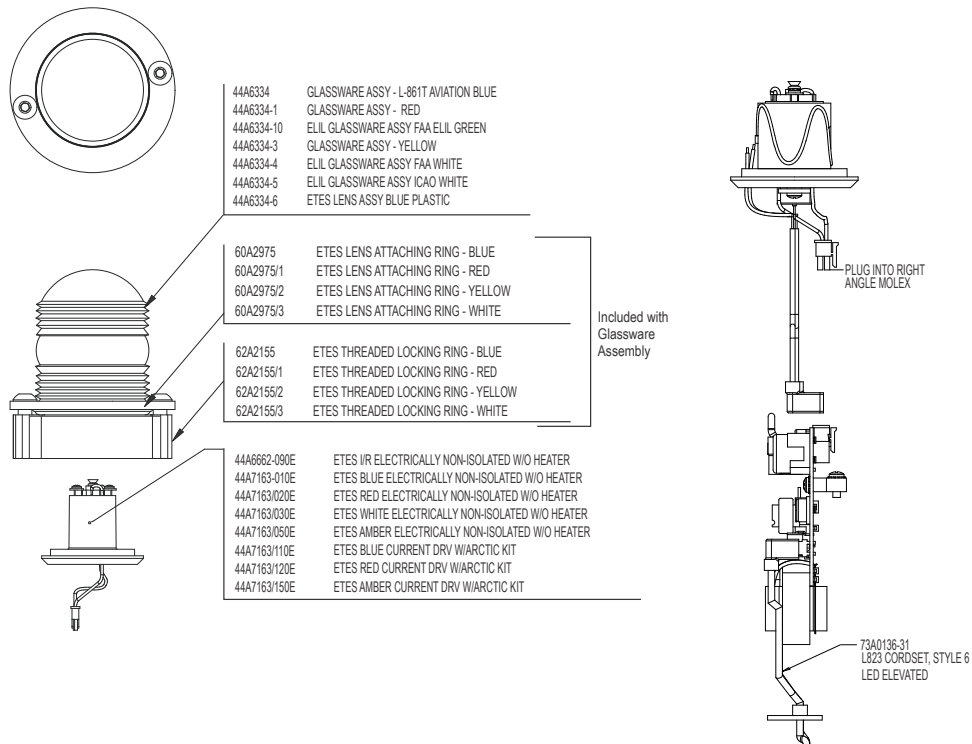


Figure 5: L-861T ETES Fixture (part 2 of 2)

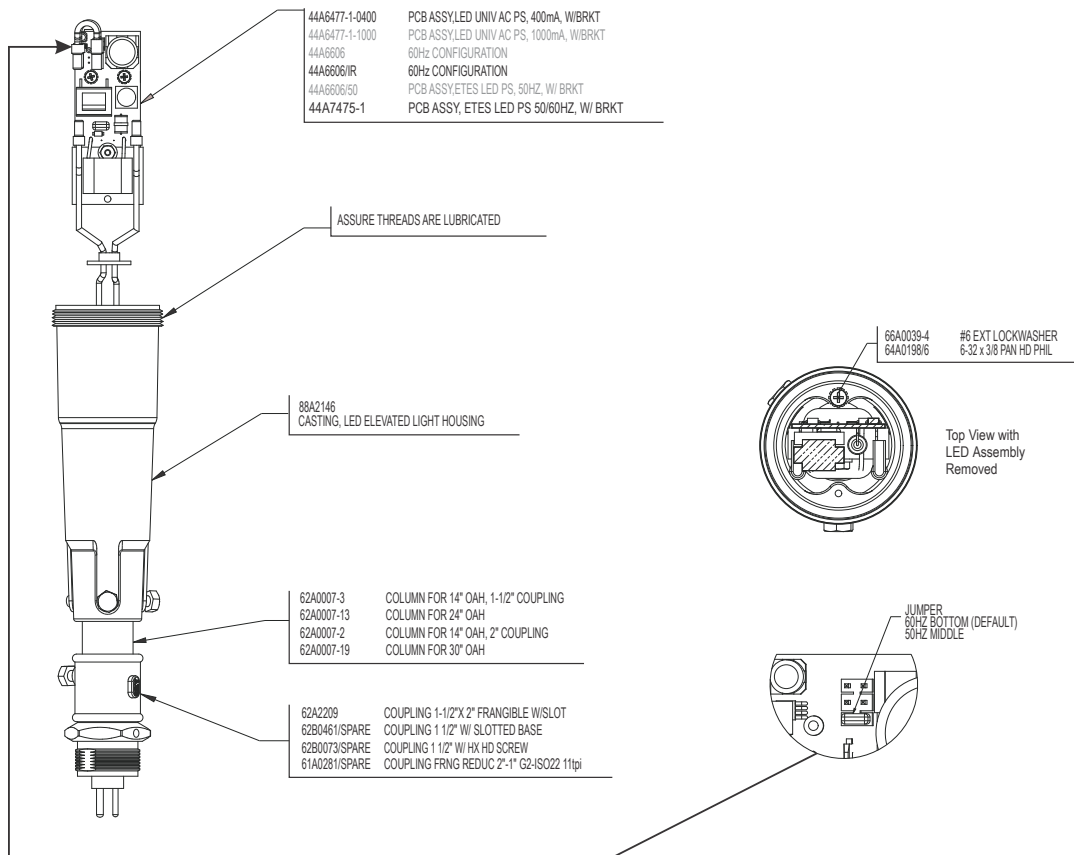


Figure 6: L-861T ETES Fixture and L-861T ETES (without heater)

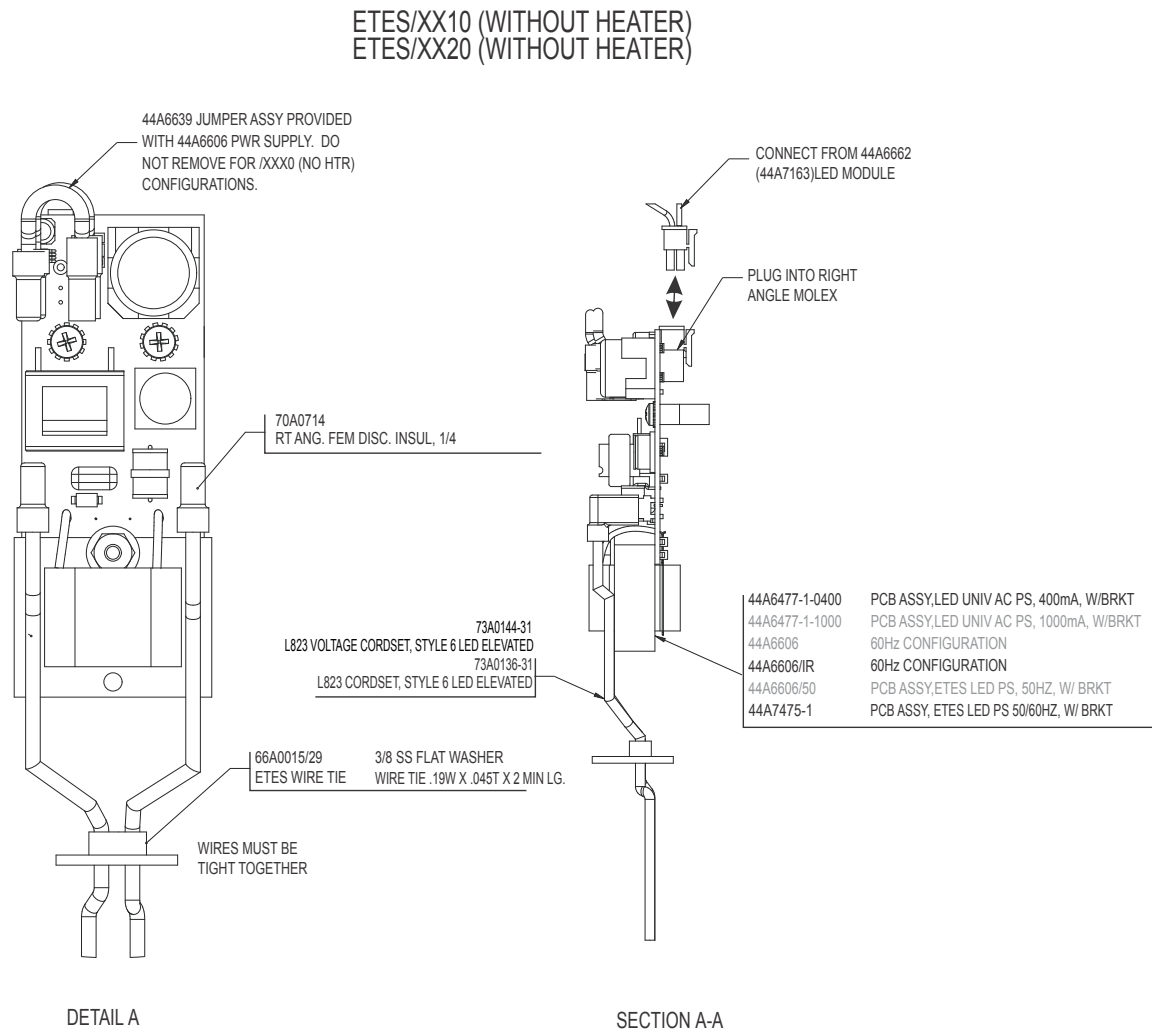
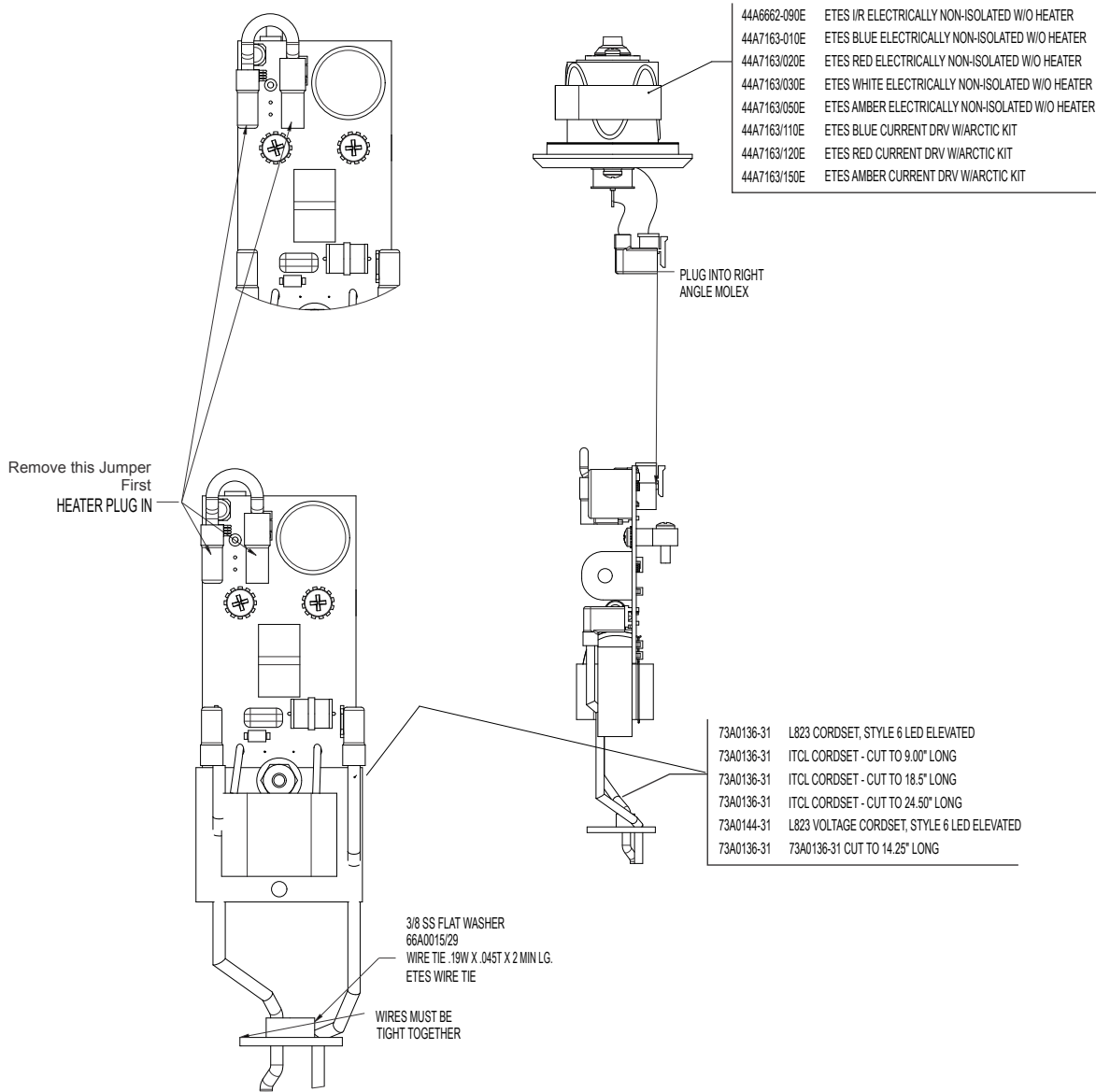


Table 2: Main Components Parts Not Shown List

Part Number	Description
67A0033	Thermal Joint Compound
67A0048	Anti-seize compound

Figure 7: L-861T ETES (with heater)

ETES/XX11 (WITH HEATER)
ETES/XX21 (WITH HEATER)

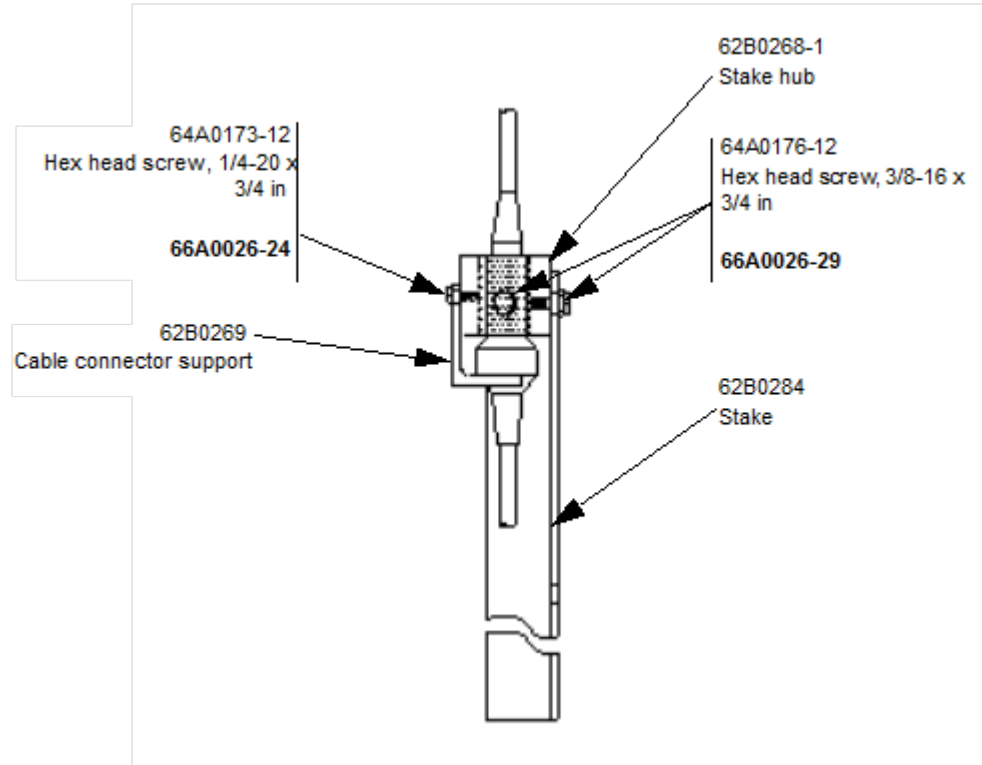


DRAWING NUMBER: ETES-XXXX
REV: AJ-02

8.1 L-861T Optional Stake Assembly Parts List

See Figure 9. The optional stake assembly part number is 44B0348.

Figure 8: Stake Assembly



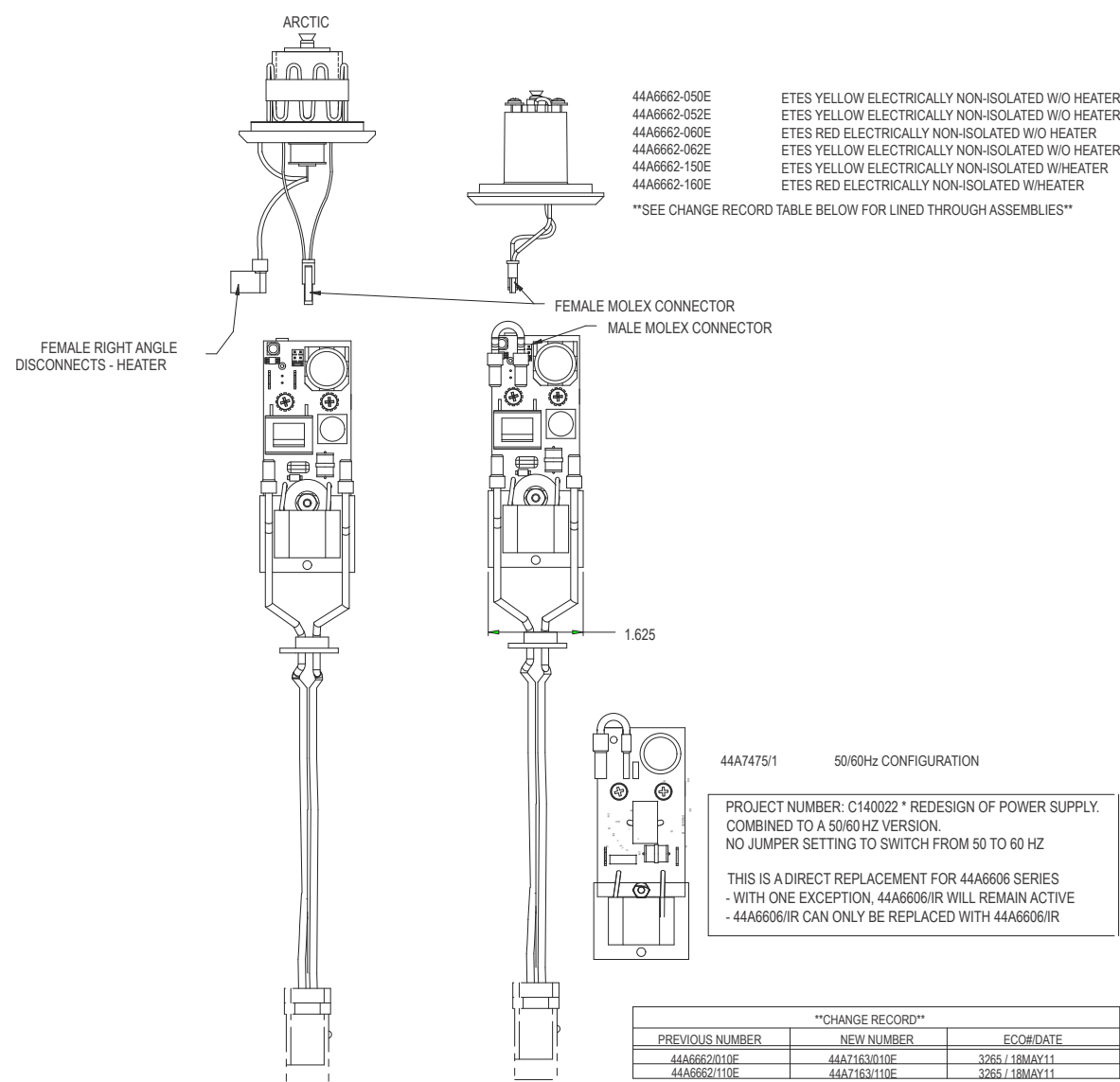
8.2 Optional Parts

Refer below for optional parts.

Part Number	Description
1935	12-inch-diameter base plate, 1.5-12 UNF tap (Supplied with gasket.)

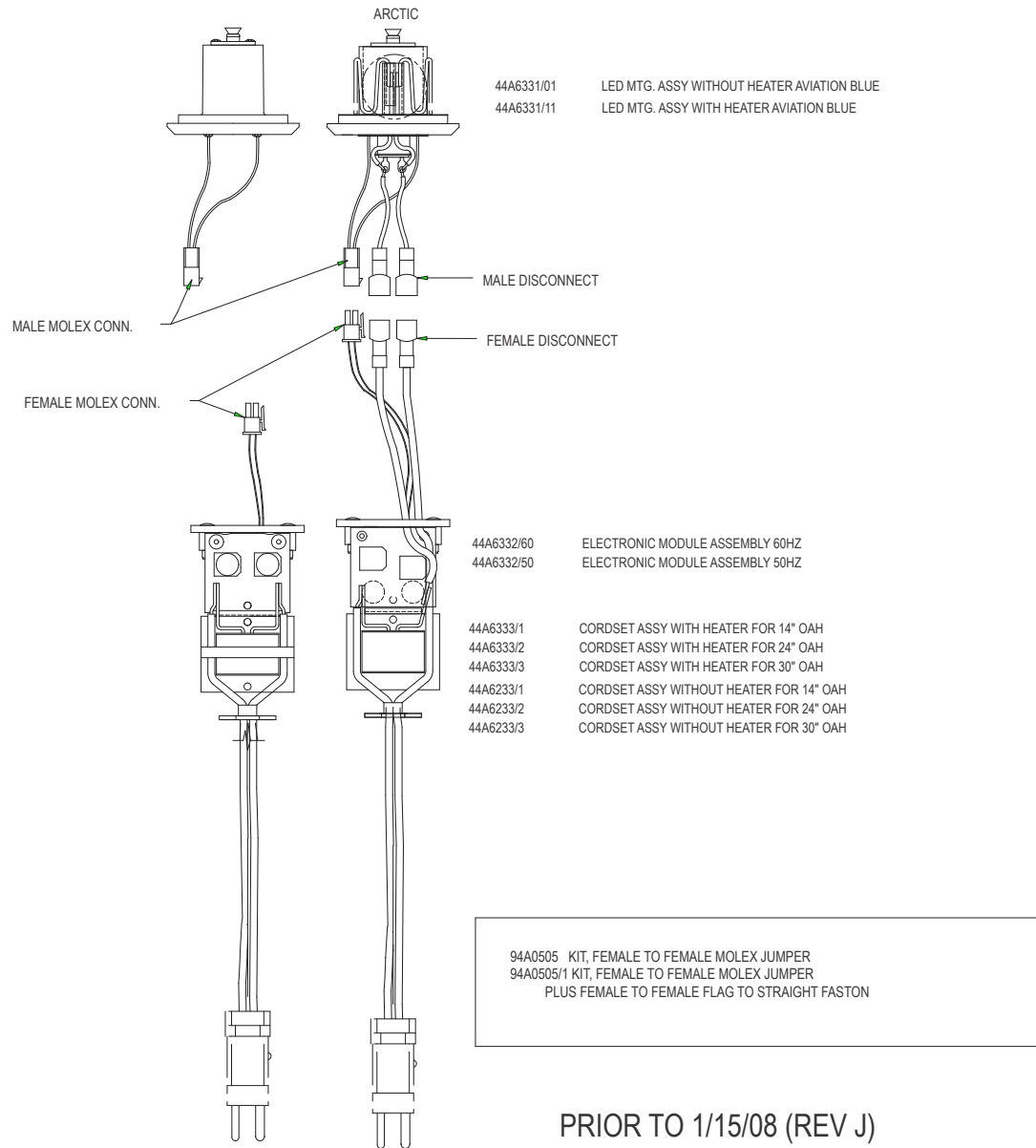
8.3 Retrofit Charts

Figure 9: ETES LED Retro Fit Chart to Rev J and After 1/15/08



AFTER 1/15/08 (REV J)

Figure 10: ETES LED Retro Fit Chart Prior to 1/15/08 Rev J



8.3.1 LED Replacement Charts

Table 3: ETES Replacement Chart For ETES/XXXX REV J CHANGE

ETES	OLD		CURRENT		Replace Old with New	
	PCB	LED MODULE	PCB	LED MODULE	Replace PCB	Replace LED Module
/1X10 BLUE 60HZ NO ARC	44A6332/60 1W	44A6331/01 1W LED	44A6606	44A7163/010E 1W LED	44A6606 + 94A0505 + 94A0525/XX + 44A6639	44A7163/010E + 94A0523
/1X11 BLUE 60HZ ARC	44A6332/60	44A6331/11 1W LED	44A6606	44A7163/110E 1W LED	44A6606 + 94A0505/1 + 94A0525/XX	44A7163/110E + 94A0523/1

Table 3: ETES Replacement Chart For ETES/XXXX REV J CHANGE (Continued)

/1X20 BLUE 50HZ NO ARC	44A6332/50	44A6331/01 1W LED	44A6606	44A7163/010E 1W LED	44A6606 + 94A0505 + 94A0525/XX + 44A6639	44A7163/010E + 94A0523
/1X21 50HZ ARC	44A6332/50	44A6331/11 1W LED	44A6606	44A7163/110E 1W LED	44A6606 + 94A0505/1 94A0525/XX	44A7163/110E + 94A0523/1
/1X30 BLUE 95-264VAC NOARC	44A6477/1/0400	44A6331/01 1W LED	44A6477/1/0400	44A6662/012E 1W LED	DIRECT REPLACEMENT	44A6662/012E
/2X10 RED 60HZ NO ARC	44A6332/60	44A6331/06 1W LED	44A6606	44A6662/060E 1W LED Obsolete	44A6606 + 94A0505 + 94A0525/XX + 44A6639	44A6662/060E + 94A0523
/2X11 RED 60HZ ARC	44A6332/60	44A6331/16 1W LED	44A6606	44A6662/160E 1W LED	44A6606 + 94A0505/1 + 94A0525/XX	44A6662/160E + 94A0523/1
/2X30 RED 95-264VAC NOARC	44A6477/1/0400	44A6662/0610 1W LED	44A6477/1/0400	44A6662/062E 1W LED	DIRECT REPLACEMENT	44A6662/062E
/5X10 YEL 60HZ NO ARC	44A6332/60	44A6331/05 1W LED	44A6606	44A6662/050E 1W LED Obsolete	44A6606 + 94A0505 + 94A0525/XX + 44A6639	44A6662/050E + 94A0523
/5X11 YEL 60HZ ARC	44A6332/60	44A6331/15 1W LED	44A6606	44A6662/150E 1W LED	44A6606 + 94A0505/1 + 94A0525/XX	44A6662/150E + 94A0523/1
/5X30 YEL 95-264VAC NOARC	44A6477/1/0400	44A6662/0510 1W LED	44A6477/1/0400	44A6662/052E 1W LED Obsolete	DIRECT REPLACEMENT	44A6662/052E

Table 4: Replacement Kits

KIT	DESCRIPTION	NOTES
94A0505	KIT LED WIRE LEAD F-F	Adapt a 44A6606 PCB to a 44A6331 LED Module no arctic
94A0505/1	KIT LED WIRE LEAD F-F + (2) FLAG terminal TO FASTON HEATER JUMPER F-F	Adapt a 44A6606 PCB to a 44A6331 LED Module with arctic
94A0523	KIT LED WIRE LEAD M-M	Adapt a 44A6662 LED Module to a 44A6332 PCB no arctic
94A0523/1	KIT LED WIRE LEAD M-M + (2) FASTON HEATER JUMPER M-M	Adapt a 44A6662 LED Module to a 44A6332 PCB with arctic
94A0525/XX	L-823 CORD SET FOR 44A6606 POWER SUPPLY /XX for overall height	Use when replacing 44A6332 Power Supply
44A6639	ETES JUMPER ASSEMBLY	Use with 44A6606 Power Supply without arctic kit


Note

Second generation 5W LED Module and 5W PCB Power Supply are no longer available and must be replaced. 5W assemblies: 44A6332/60/5 - 5W PCB Power Supply 44A6331/11/5W - 5W LED Module with Heater

8.4 RELIANCE ETES Spare Parts

Table 5: ETES-L Spare Parts

Description	Part No.
Column for 14" OAH, 1.5-inch coupling	62A0007-3
Column for 14" OAH, 2-inch coupling	62A0007-2
Column for 24" OAH	62A0007-13
Column for 30" OAH	62A0007-19
Cord set, L-823 3-pin, male, 95-264 VAC	73A0144-31
Cord set, L-823 3-pin, female, 95-264 VAC	73A0145-12
Cord set, L-823, 2-pin, Style 6, current driven (without terminal)	73A0136-31
Cord set assembly, current driven, 14" OAH	44A6835-14
Cord set assembly, current driven, 24" OAH	44A6835-24
Cord set assembly, current driven, 30" OAH	44A6835-30
Frangible coupling, 1.5 inch, 12 TPI	62B007/SPARE
Frangible coupling, 1.5 inch, 12 TPI, with slot*	62B0461/SPARE
Frangible reducer coupling, 2-1 inch, 11.5 TPI	61A0281/SPARE
Frangible reducer coupling, 2-1 inch, 11 TPI	61A0350/SPARE
Gasket, lens bearing	63A1048
Glassware, blue	63A1054-1
Glassware, red	63A1054-2
Glassware, yellow	63A1054-3
Glassware, green	63A1054-5
Glassware, white	63A1117-W
Glassware assembly, blue	44A6334
Glassware assembly, red	44A6334-1
Glassware assembly, yellow	44A6334-3
Glassware assembly, white	44A6334-4
Glassware assembly, green	44A6334-10
Lens (UV resistant polycarbonate), blue	63A1088-B
Lens assembly, blue (UV-resist. polycarbonate)	44A6334-6
Terminal, 90°, for cord set	70A0714
PCB ASSY, ETES LED PS 50/60HZ, W/ BRKT	44A7475-1

* Slot across threaded end allows easy replacement of broken frangible coupling

Appendix A: SUPPORT

Our experienced engineers are available for support and service at all times, 24 hour/7 days a week. They are part of a dynamic organization making sure the entire ADB SAFEGATE is committed to minimal disturbance for airport operations.

ADB SAFEGATE Support

Live Technical Support - Americas

If at any time you have a question or concern about your product, just contact ADB SAFEGATE's technical service department. Trained in all areas of system issues, troubleshooting, quality control and technical assistance, our highly experienced Technical support specialists are available 24 hours a day, seven days a week to provide assistance over the phone.

ADB SAFEGATE Americas Technical Service & Support (US & Canada): +1-800-545-4157

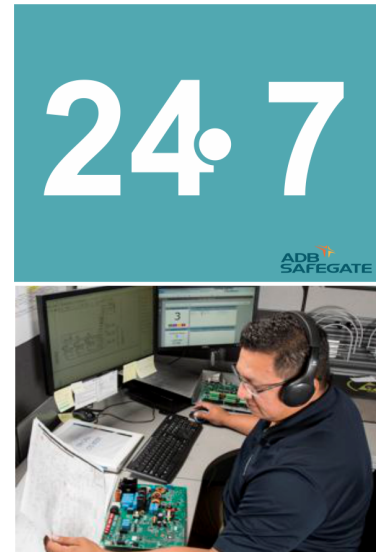
ADB SAFEGATE Americas Technical Service & Support (International): +1-614-861-1304

During regular business hours, you can also Chat with a Service Technician. We look forward to working with you!

Before You Call

When you have an airfield lighting or system control system problem it is our goal to support airfield maintenance staff as quickly as possible. To support this effort we ask that you have the following information ready before calling.

- The *airport code*
- If not with an airport, then company name (prefer customer id number)
- Contact phone number and email address
- Product with part number preferable or product number
- Have you reviewed the product's manual and troubleshooting guide
- Do you have a *True RMS* meter available (and any other necessary tools)
- Be located with the product ready to troubleshoot



Note

For more information, see www.adbsafegate.com, or contact ADB SAFEGATE Support via email at support@adbsafegate.com or

Brussels: +32 2 722 17 11

Rest of Europe: +46 (0) 40 699 17 40

Americas: +1 614 861 1304. Press 3 for technical service or press 4 for sales support.

China: +86 (10) 8476 0106

A.1 ADB SAFEGATE Website

The ADB SAFEGATE website, www.adbsafegate.com, offers information regarding our airport solutions, products, company, news, links, downloads, references, contacts and more.

A.2 Recycling

A.2.1 Local Authority Recycling

The disposal of ADB SAFEGATE products is to be made at an applicable collection point for the recycling of electrical and electronic equipment. The correct disposal of equipment prevents any potential negative consequences for the environment and human health, which could otherwise be caused by inappropriate waste handling. The recycling of materials helps to conserve natural resources. For more detailed information about recycling of products, contact your local authority city office.

A.2.2 ADB SAFEGATE Recycling

ADB SAFEGATE is fully committed to environmentally-conscious manufacturing with strict monitoring of our own processes as well as supplier components and sub-contractor operations. ADB SAFEGATE offers a recycling program for our products to all customers worldwide, whether or not the products were sold within the EU.

ADB SAFEGATE products and/or specific electrical and electronic component parts which are fully removed/separated from any customer equipment and returned will be accepted for our recycling program.

All items returned must be clearly labeled as follows:

- For *ROHS/WEEE* Recycling
- Sender contact information (Name, Business Address, Phone number).
- Main Unit Serial Number.

ADB SAFEGATE will continue to monitor and update according for any future requirements for *EU directives* as and when *EU member states* implement new *regulations* and or *amendments*. It is our aim to maintain our *compliance plan* and assist our customers.

Company Addresses

ADB SAFEGATE, Belgium	ADB SAFEGATE BV Leuvensesteenweg 585, B-1930 Zaventem Belgium
Contact: Tel.: +32 2 722 17 11 Fax: +32 2 722 17 64	Email: marketing@adbsafegate.com Internet: www.adbsafegate.com
ADB SAFEGATE, Americas	ADB SAFEGATE Americas LLC 977 Gahanna Parkway, Columbus, OH 43230 USA
Contact: Tel.: +1 (614) 861 1304 Fax: +1 (614) 864 2069	Email: sales.us@adbsafegate.com Internet: www.adbsafegate.com
ADB SAFEGATE, Sweden	ADB SAFEGATE Sweden AB Djurhagegatan 19 SE-213 76 Malmö Sweden
Contact: Tel.: +46 (0)40 699 17 00 Fax: +46 (0)40 699 17 30	Email: marketing@adbsafegate.com Internet: www.adbsafegate.com
ADB SAFEGATE, China	ADB SAFEGATE Airfield Technologies Ltd. China Unit 603, D Block, CAMIC International Convention Center, No 3, Hua Jia Di East road, ChaoYang district, Beijing 100102 P.R. China
Contact: Tel.: +86 (10) 8476 0106 Fax: +86 (10) 8476 0090	Email: china@safegate.com Internet: www.adbsafegate.com
ADB SAFEGATE, Germany	ADB SAFEGATE Germany GmbH Konrad-Zuse-Ring 6, D-68163 Mannheim Germany
Contact: Tel.: +49 (621) 87 55 76-0 Fax: +49 (621) 87 55 76-55	Email: marketing@adbsafegate.com Internet: www.adbsafegate.com



**Powering Your Airport Performance
from Approach to Departure**

adbsafegate.com

Copyright © ADB SAFEGATE, all rights reserved

