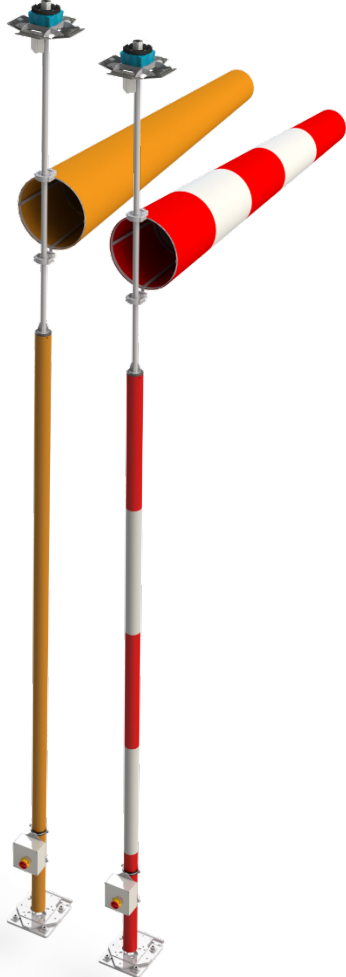


Q-Aviation Lighting / Airfield Lighting / Q-L807 Wind Direction Indicator

## L807 Wind Direction Indicator



## TECHNICAL DETAILS

Application:	Rigid mast, Airfield/Runway
Colours:	ICAO Red/White FAA Orange
Lighting styles:	Style I-A: Externally lighted Style I-B: Internally lighted Style II: Unlighted
Windsock size:	Size 1: Ø45 x 250 cm - Ø18" x 8 ft. Size 2: Ø90 x 375 cm - Ø36" x 12 ft.
Windsock Material:	Reinforced double stitched Polyester, PU Coated
Windsock frame material:	SS316
Power consumption:	Externally: 50 Watt Internally: 26 Watt Unlighted: n/a
Obstruction Light:	1x L-810, Low intensity
Mast material:	Aluminium, 6060T66
Mast dimensions:	Ø100 x 4650 mm
Base:	Tilttable foot, Mounted on concrete. Aluminium Frangible Bolts
Ambient Temp:	-20°C to + 60°C
In Compliance With:	ICAO Annex 14 Vol. I & Vol. II FAA AC150/5345-27E L-807
Life expectancy:	100.000+ hours
System warranty:	24 months
Windsock Warranty:	6 months
IP index:	Externally: IP 65 Internally: IP 66 Unlighted: n/a
Power input options:	100-240Vac 50-60 Hz 2.8-6.6A 24Vdc

## DESCRIPTION

The Q-Aviation L-807 Wind Direction Indicator is a high-end product. The L-807 Wind Direction Indicators are usually placed close to a runway or taxiway to indicate to the pilots the wind direction, in order to ensure a safe take-off and taxi. The L-807 has a rigid and tilttable support structure. This makes replacing the windsock an easy operation. The L-807 wind direction indicators are in compliance with ICAO annex 14 vol. I & vol. II and FAA AC150/5345-27E L-807 standards.

## ORDER CODES - L807 Wind Direction Indicator

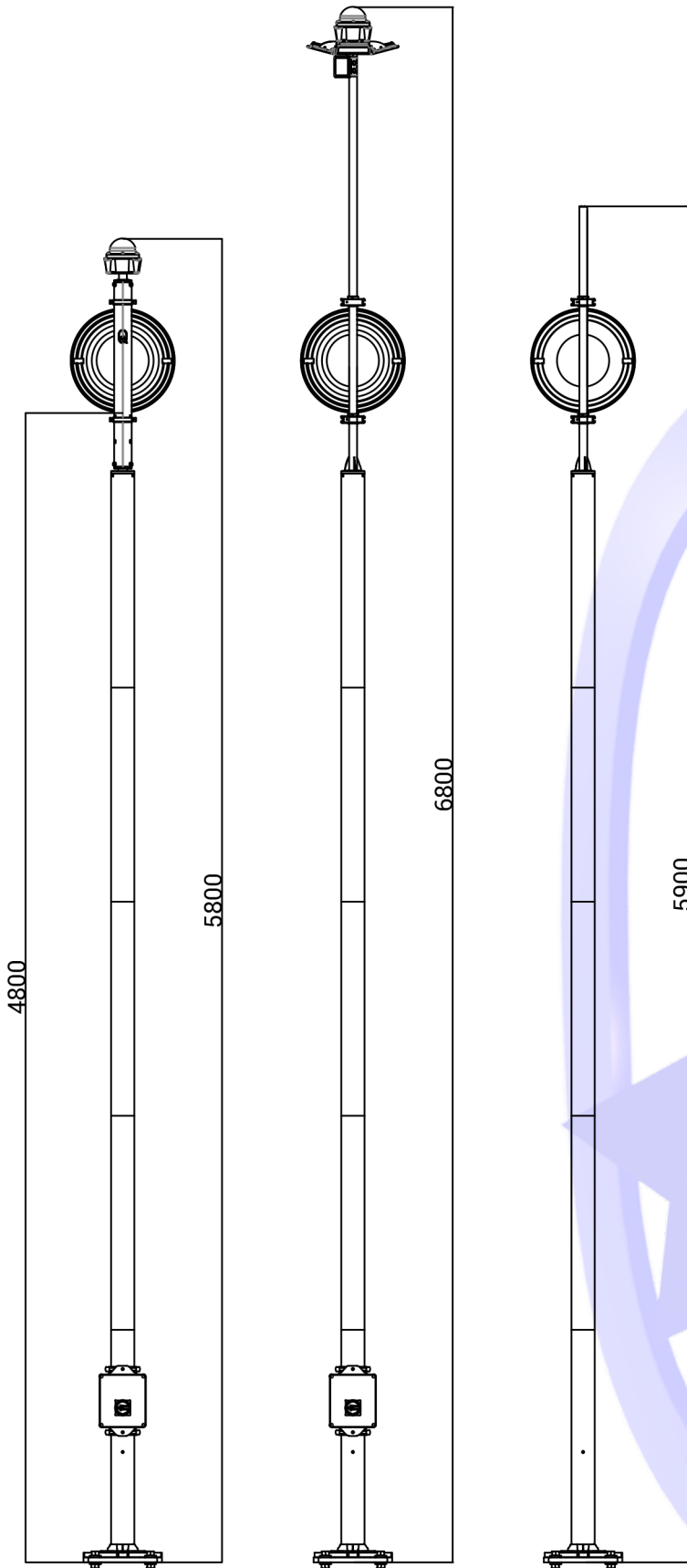
**Q23-L807XX - XX - XXX**

<p>↓</p>	<p>↓</p>	<p>↓</p>
<p><b>Q23-L80711</b> -</p> <p><b>Q23-L80712</b> -</p> <p><b>Q23-L807F1</b> -</p> <p><b>Q23-L807F2</b> -</p>	<p><b>IA</b> - Style I-A; Externally Lighted system</p> <p><b>IB</b> - Style I-B; Internally Lighted system</p> <p><b>II</b> - Style II; Unlighted system</p>	<p><b>024</b> - 24Vdc Power input</p> <p><b>066</b> - 2.8 - 6.6A power input</p> <p><b>230</b> - 100-240 Vac power input</p> <p><b>000</b> - No power input, only applicable with unlighted (II) version.</p>

<b>Q23-L80711</b> -	L-807 ICAO Wind Direction Indicator with Red/White Rigid mast & support, Ø45x250 cm red/white striped windsock.
<b>Q23-L80712</b> -	L-807 ICAO Wind Direction Indicator with Red/White Rigid mast & support, Ø90x375 cm red/white striped windsock.
<b>Q23-L807F1</b> -	L-807 FAA Wind Direction Indicator with Orange Rigid mast & support, Ø45x250 cm Orange windsock.
<b>Q23-L807F2</b> -	L-807 FAA Wind Direction Indicator with Orange Rigid mast & support, Ø90x375 cm Orange windsock.

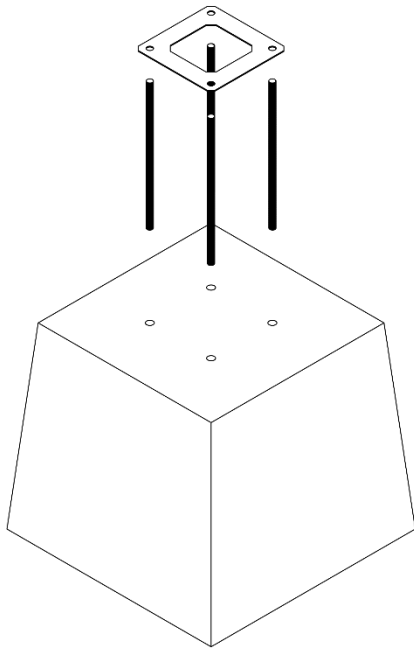
## DIMENSIONAL DRAWING

The main dimensions are displayed in the image below.

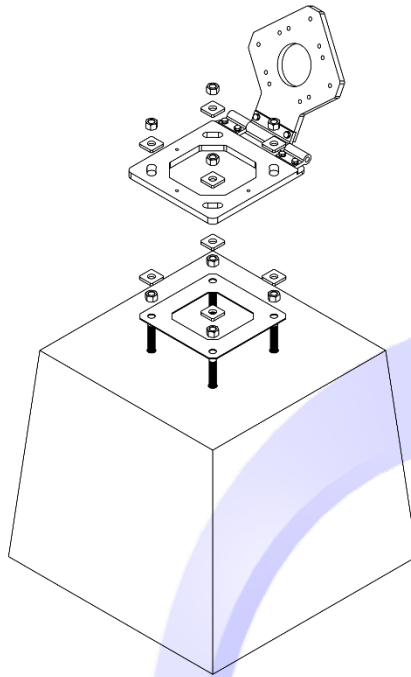


## BASE MOUNTING

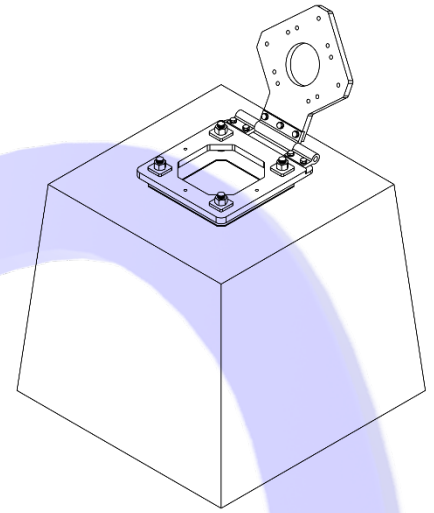
The image below shows the supplied parts for mounting the base.



Before pouring the concrete



Before assembly



Finished base with hinge.