

# OL1-ST

## Low Intensity Red LED Solar Obstruction Light



### Solar-Powered Precision Built Texas Tough

The OL1-ST is a low intensity red LED solar-powered obstruction light that features a diverse range of applications including marking of wind turbines, bridges, towers and other structures that present a hazard to aviation. The wide asymmetrical vertical profile meets or exceeds the requirements of the FAA L-810 and ICAO types A & B obstacle lights

#### Key Features

- Five-year limited warranty
- 96% Reduced energy consumption versus incandescent
- Aviation clear Acrylic Fresnel lens
- Painted cast aluminum base, stainless steel latches and hardware for corrosion protection.
- Available in side hub or bottom hub configurations
- No special tools required for installation or maintenance
- Neoprene gasket for weather proofing

#### Optional Features

- GPS Synchronization
- Data Ports: RS-232 or RS-485
- External charging plug - Monitoring via:
  - Alarm/monitoring wire (beacon healthy)
  - RS-232 or RS-485 data port
  - Alarm/monitor connection option

#### Standards and Compliance

- US FAA AC 150/5345-43H specification for obstruction lighting equipment
- ICAO Annex 14, Volume I international standards and recommended practices - Seventh Edition, July 2016

#### Performance

##### Easy Programming

Using the IR Remote, users can program one feature at a time, with the OL1-ST confirming the settings by flashing the programming code back

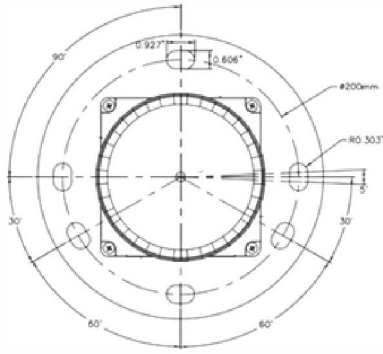
Programmable Values include:

- Flash characters
- Effective intensity
- Day/Night transition levels
- Synchronization control
- Sleep and Test modes
- Transport mode (allows programming prior to deployment)
- Low battery voltage cut out
- manufactured by TwR lighting

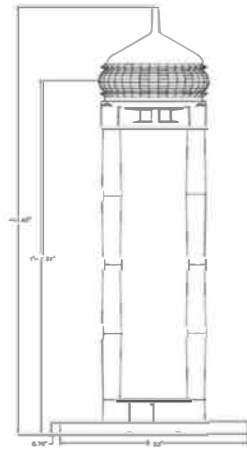


# OL1-ST

## Low Intensity Red LED Solar Obstruction Light



**Bolt Pattern**



**Dimensions**

### General Specifications

Battery Voltage	12 VDC
Operating Voltage	9 - 18 VDC
LED Crystal Battery	12Ah or 24Ah (2 x 12Ah)
Battery Life	6 year est. @ 21°C
Charging	Stops at -30°C
Solar Panels	Mono-crystalline
Solar Panel Orientation	Vertical 4 panels 90° en azimuth
Operating Temperature	-30°C to +50°C
Ingress Rating	IP-68 1 Hour immersion in 1.5 meters of water
Cooling Pressure	Convection
Equalization	Membrane in solar body
Salt	Continuous exposure to saltwater and spray
Wind	104Kt
Ice loading	25kg/square meters
Shock/Vibration	75g shock / 5g vibration in all directions
Lens Material	Acrylic
Sealing	Lens glued in position
Bird Spike Material	Plastic center spike
Body and Base Material	Injection molded UV-stable Polycarbonate
Sealing Material	O-Ring

### Typical Current Draw 12V @25C

Type	Intensity	Night
FAA L-810	32.5Cd (Fixed/Steady)	126mA
ICAO Type A	10Cd (Fixed/Steady)	33mA
ICAO Type B	32Cd (Fixed/Steady)	126mA
ICAO Type E*	32Cd (Flashing 30 FPM)	49.5mA
Flash Pattern		0.5s On, 1.5s Off
Day Current		3.8mA
Light Off Current		2.5mA (4.5mA with GPS)**

\*\* The GPS sync options require 10mA for 2 minutes every 20 minutes (1mA average)