



# Easy Drain<sup>®</sup>

by ess

## Modulo Design Z-3

Easy Drain Modulo Design Z-3 gives your bathroom a distinct touch. The modern and timeless Z-3 has a 3-sided stainless frame with a slim front profile. This series is standard installed with height adjustable frame (TAF) and pre-assembled sealing membrane (WPS) for high-quality finish and complete water drainage.

### FEATURES

- Siphon - Removable and easy to clean
- Supplied as - Complete set
- Tile Adjustable Frame - Height adjustable 7 - 18 mm
- Water Protection System - 10-year warranty
- Available lengths - 800 - 1200 mm



#### Manufacturer

Easy Sanitary Solutions  
Nijverheidsstraat 60 | 7575 BK Oldenzaal | The Netherlands  
T. +31 (0)541 200 800 | F. +31 (0)541 200 899  
info@esspost.com | www.easydrain.com

#### Contact

Easy Sanitary Solutions  
Nijverheidsstraat 60 | 7575 BK Oldenzaal | The Netherlands  
T. +31 (0)541 200 800 | F. +31 (0)541 200 899  
sales@esspost.com | www.easydrain.com

## GENERAL

|               |                              |
|---------------|------------------------------|
| Serie         | Modulo Design Z-3            |
| Name          | Modulo Design Z-3            |
| Model         | Rectangular shower drain     |
| Length (mm)   | 800, 900, 1000, 1200         |
| Product type  | Complete                     |
| Application   | New construction, Renovation |
| Certification | DIN 18534                    |

## INSTALLATION

|   |   |
|---|---|
| Substrate                                   | Concrete / Sand Cement, Wooden floors, Lewis sheets |
| Floor finish                                | Tiles / Mosaic, Glass Mosaic, Thin tiles            |
| Height adjustable feet                      | Included  |
| Installation option                         | Floor, Wall   |
| Outlet                                      | Horizontal  |
| Connection (mm)                             | 40  |
| Min. installation depth (mm) (built-in set) | 63  |
| Min. installation depth (mm) (incl. grate)  | 70  |

## DRAINAGE

|   |    |
|---|----|
| Max. drainage capacity entrance (l/min) | 25 |
| Max. drainage capacity wall (l/min)     | 32 |
| Max. drainage capacity (l/min)          | 32 |

## BUILT-IN SET

|                                |                    |
|--------------------------------|--------------------|
| Pre-assembled sealing membrane | Included           |
| Siphon features                | Cleanable          |
| Water seal height (mm)         | 30                 |
| Outlet                         | Horizontal         |
| Material siphon                | Polypropylene (PP) |

## DESIGN

|                         |                             |
|-------------------------|-----------------------------|
| Grate finish            | White glass                 |
| Grate pattern           | Zero / Closed               |
| Grate width (mm)        | 46                          |
| Grate tile insert (mm)  | N.A.                        |
| Adjustable grate        | No                          |
| Frame type              | TAF (Tile Adjustable Frame) |
| TAF Frame material      | Stainless steel (304)       |
| Design frame finish     | Brushed stainless steel     |
| Frame width (mm)        | 81                          |
| Wheelchair accessible   | No                          |
| Extension set available | No                          |



### Manufacturer

Easy Sanitary Solutions  
 Nijverheidsstraat 60 | 7575 BK Oldenzaal | The Netherlands  
 T. +31 (0)541 200 800 | F. +31 (0)541 200 899  
 info@esspost.com | www.easydrain.com

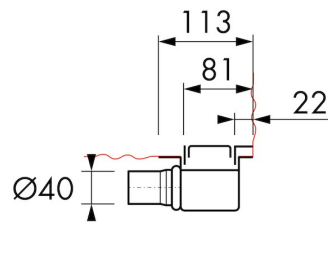
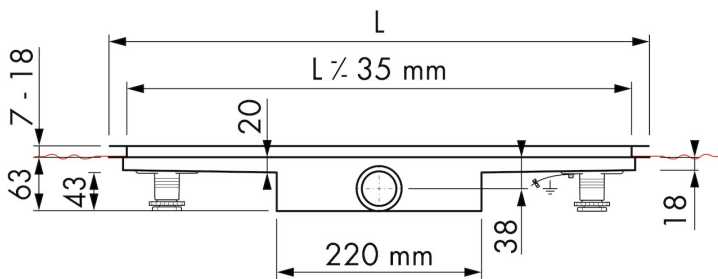
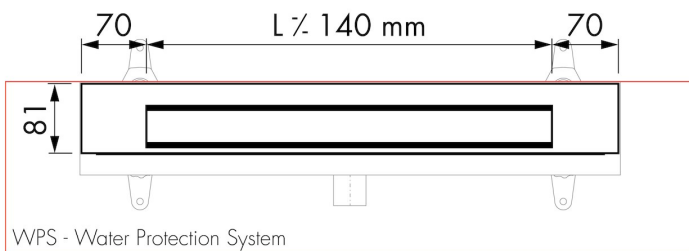
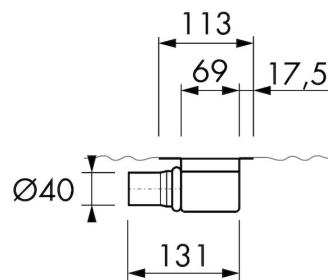
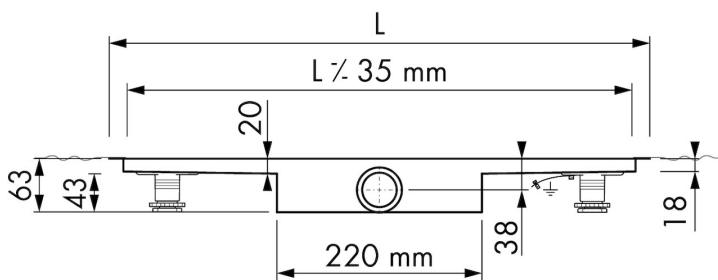
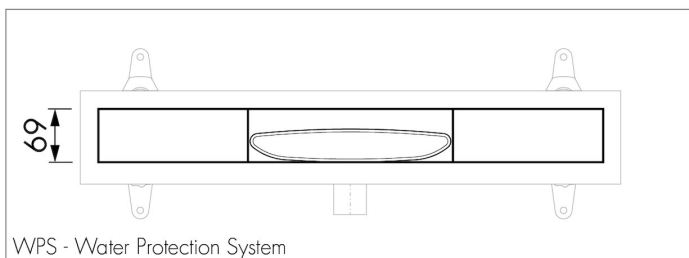
### Contact

Easy Sanitary Solutions  
 Nijverheidsstraat 60 | 7575 BK Oldenzaal | The Netherlands  
 T. +31 (0)541 200 800 | F. +31 (0)541 200 899  
 sales@esspost.com | www.easydrain.com

## ARTICLE CODE

|         |                                |  |  |
|---------|--------------------------------|--|--|
| 800 mm  | MTAFDZ3MGW 800 / EDM1 800-30   |  |  |
| 900 mm  | MTAFDZ3MGW 900 / EDM1 900-30   |  |  |
| 1000 mm | MTAFDZ3MGW 1000 / EDM1 1000-30 |  |  |
| 1200 mm | MTAFDZ3MGW 1200 / EDM1 1200-30 |  |  |
|         |                                |  |  |
|         |                                |  |  |

## TECHNICAL DRAWINGS



**Manufacturer**

Easy Sanitary Solutions  
 Nijverheidsstraat 60 | 7575 BK Oldenzaal | The Netherlands  
 T. +31 (0)541 200 800 | F. +31 (0)541 200 899  
 info@esspost.com | www.easydrain.com

**Contact**

Easy Sanitary Solutions  
 Nijverheidsstraat 60 | 7575 BK Oldenzaal | The Netherlands  
 T. +31 (0)541 200 800 | F. +31 (0)541 200 899  
 sales@esspost.com | www.easydrain.com