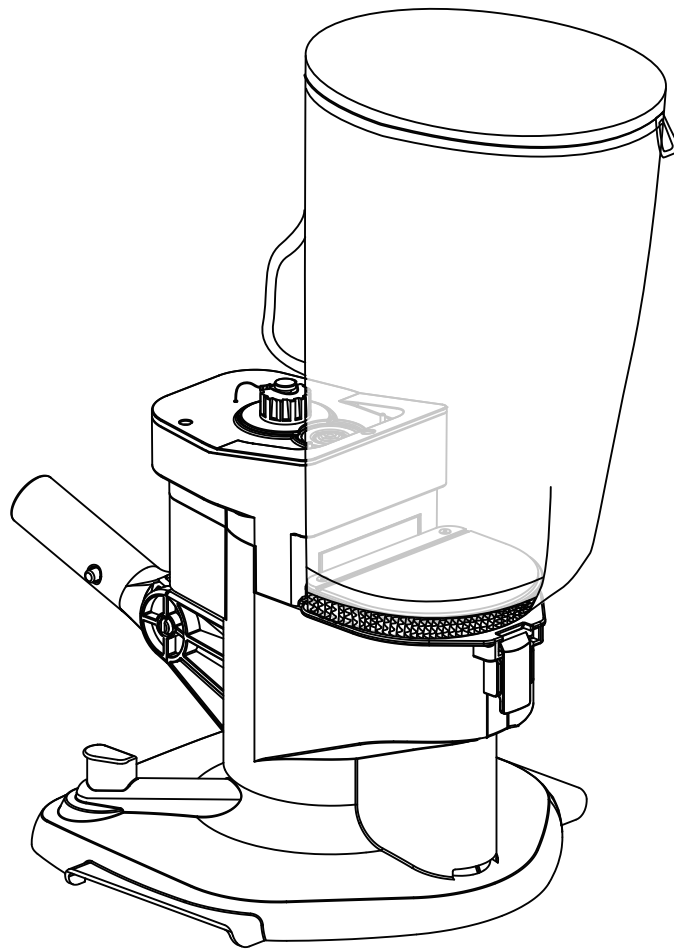


EN

AQUAJACK 550

ELEK LEAF EATER Instruction manual



Battery: 11.1V / 2600mAh
Charging power: 12.6V DC, 1.0A

Motor voltage: 11.1V DC
Waterproof grade: IPX8



Ningbo Poolstar Pool Products Co., Ltd
www.cnpoolstar.com

SAFETY WARNING

When installing and using this electrical equipment, you should always follow the basic safety precautions. Please read the following carefully

Warning!

The cleaner is not a toy, and is operated by people older than 8 years age. Any people who operates the cleaner, has to read the manual carefully before work it.

- (1)The cleaner is designed to clean the swimming pool.
- (2)Please use the original batteries and charger when using.
- (3)Only charging it when the cleaner is power off.
- (4)Put the cleaner into a clean and dry place. Do not expose it under the sun, or close to explosive.
- (5)The filter bag is easy to be broken when there is sharp substances under water.
- (6)The cleaner automatically stops to work when it is out of water.
- (7)Do not close to the vacuum head when it is working, due to its suction power, especially for the human body, animals, hairs or clothes.
- (8)Do not disassemble the cleaner without professional guidance or notice from the authorized distributor or manufacturer.
- (9)Do not leak the lubricant oil, and it causes water polluted.
- (10)Stop to work the cleaner when there is anything wrong; Please contact with the authorized distributor or replace it to the original parts/accessories.
- (11)Cleaner working conditions:
 - (11)-1 Maximum applicable water depth: 3 m (10 ft)
 - (11)-2 Water temperature: 4°C(39.2°F)-35°C(95°F)

1. Charger

- (1)Use the original charger provided only.
- (2)For indoor use only. The charger should not be used outdoor and not be exposed to rain, humidity, any liquid or heat.
- (3)Keep the charger out of children.
- (4)Never use the charger if any damage is found.

- (5) Do not handle the cleaner and charger with wet hands and bare feet, when charging the cleaner.
- (6) Disconnect the charger from power when not in use.
- (7) If the wire is damaged, it must be replaced by a new charger to avoid danger.
- (8) Make sure the cleaner and charger are totally dry before charging.
- (9) Charge the cleaner 3-4 hours prior to the first use. Normally cleaner can be operated about 75 minutes after fully charged.

2. Battery disposal

- (1) The cleaner battery is a lithium battery, it must be disposed properly, please contact with your local authority for more information.
- (2) Never attempt to disassemble the lithium battery.
- (3) Remove all personal items such as rings, bracelets, necklaces and watches when unwiring a lithium battery from the vacuum unit.
- (4) The battery causes short circuit current, as well as severe burning when it is high enough.
- (5) Wear complete eye protection, gloves and protective clothing when removing the battery pack.
- (6) No smoking or sparkling flame near the cleaner, or, it may cause unknown gases.
- (7) If acid comes in contact with skin and clothing, wash immediately with plenty of soap and water.
- (8) If acid comes in contact with eyes, immediately flood eye with running cool water for at least 15 minutes. Get medical attention immediately.

Above warning and cautions are not intended to incorporate all possible instances for risks and/or severe injury. Pool/spa owners should always exercise intensive caution and common sense when operating the cleaner.

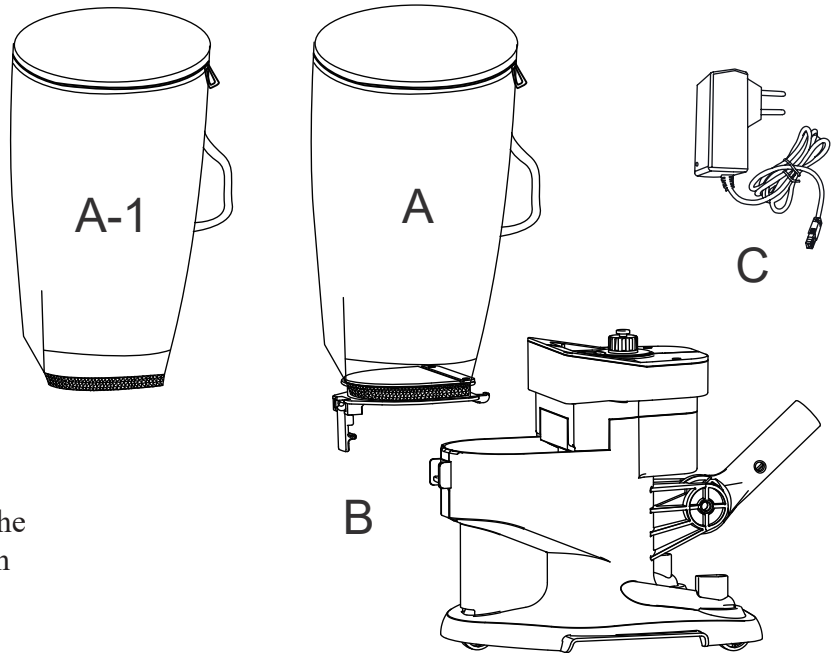
Assembly

A: Filter bag

A-1: Fine material filter bag
(optional, not with shipment)

B: Cleaner body

C: Charger

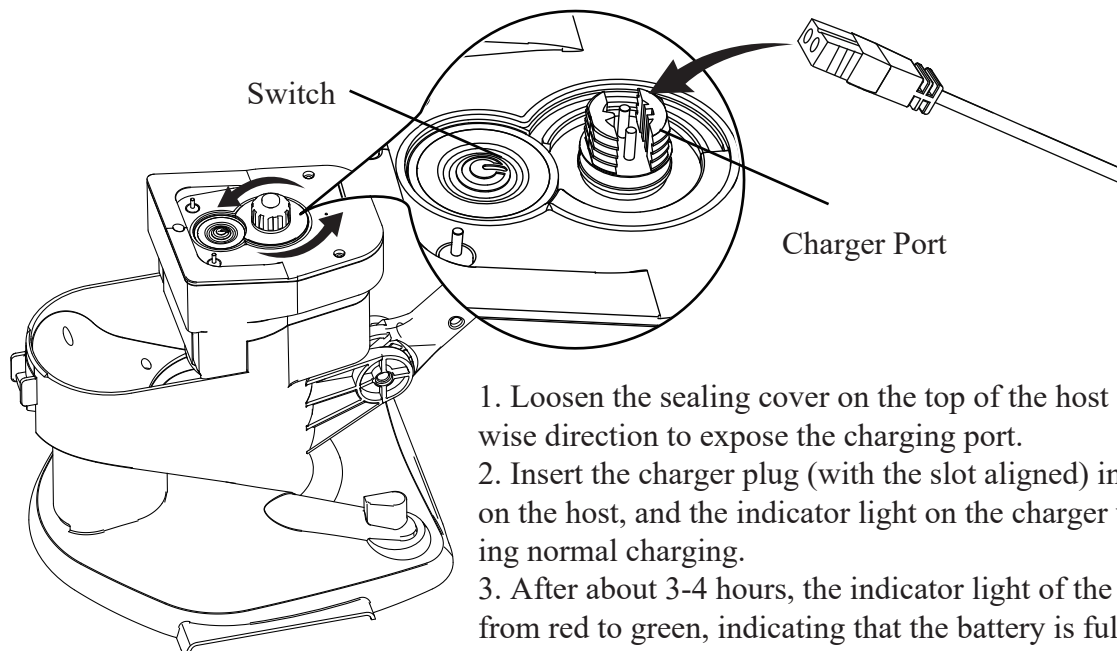


The cleaner is equipped with a spiral impeller, which rotates to drive the garbage in the water to be sucked into the machine and filtered out through a mesh bag to achieve cleaning purposes.

Assembly and operation

Charging warning

- Use only the original external adapter and the charging cable provided.
- Make sure the robot and charger ports are clean and dry before installation.
- Power up the robot before using it for the first time (about 3-4 hours)



1. Loosen the sealing cover on the top of the host in a counterclockwise direction to expose the charging port.
2. Insert the charger plug (with the slot aligned) into the charging port on the host, and the indicator light on the charger will turn red, indicating normal charging.
3. After about 3-4 hours, the indicator light of the charger changes from red to green, indicating that the battery is fully charged. You can unplug the charger from the host and rotate the sealing cover clockwise into the charging port, aligning the gap to ensure that the charging port is sealed when the product is used in water.

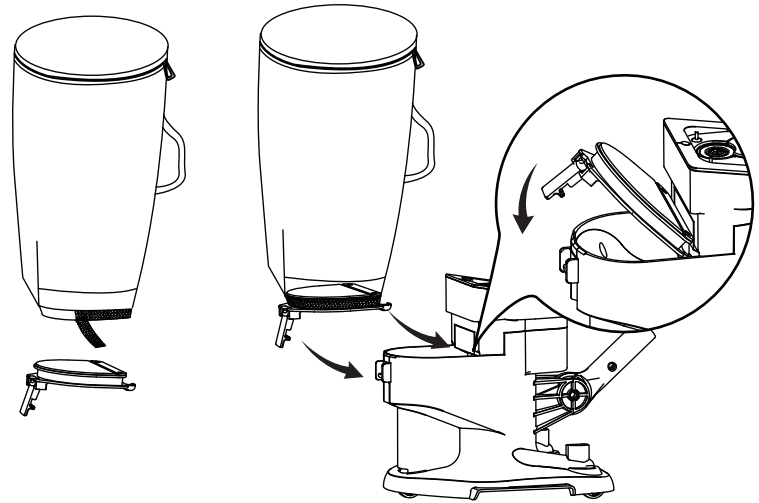
Assembly of the cleaner

Assembly and replacement of mesh bags:

1. Tear off the Velcro on the net bag, fix it on the net bag fixing frame, and then attach the Velcro.

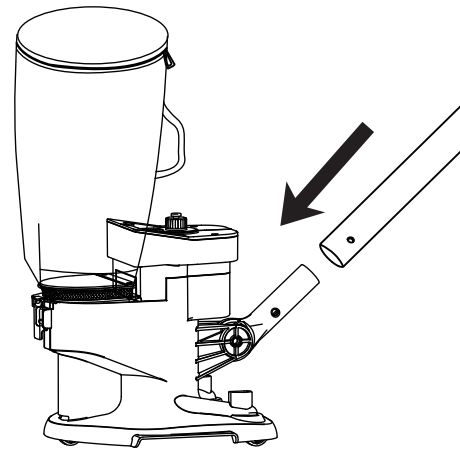
Note: you can choose a small micro filter bag (optional bag).

2. Fasten the mesh bag fixing frame to the host, as shown in the figure.



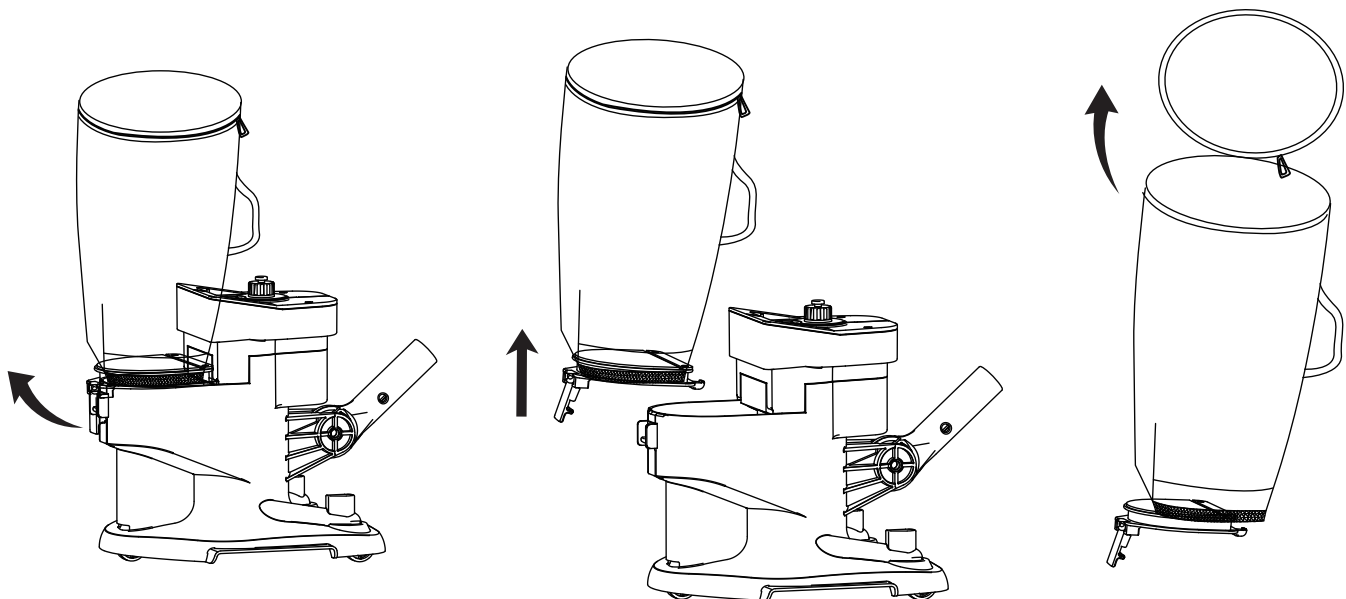
Connection to aluminum tube
(not with shipment):

Insert the aluminum tube into the host handle until the V-clip buttons on both sides pop out to lock the aluminum tube.



Garbage disposal

Open the buckle of the net bag board, take out the net bag and fixing frame together, open the zipper at the top of the net bag, remove the garbage, and clean the net bag.



Maintenance and storage

1. The battery discharges itself during storage. Make sure the cleaner is fully charged before storage.
 2. When not in use, you must recharge the battery at least every three months.
- Unplug the external adapter from the socket and then the charging cable from the external adapter and the cleaner.
 - Remove the attachment from the cleaner. If necessary, rinse the cleaner and accessories with clean water. Do not use detergent.
 - Before storage, make sure the cleaner is drained.
 - Use a clean towel to clean the cleaner and its accessories.
 - Store in a well ventilated place away from sunlight, heat, fire sources, pool chemicals and children.
 - The storage environment temperature should be 10° C - 25° C (50° F - 77° F).

Note: higher storage temperatures may shorten battery life.

Battery assembly and replacement

Warning!

Do not treat electrical appliances as unclassified municipal waste, use separate collection facilities. For information on available collection systems, contact your local government.

- Do not remove the lithium battery without authorization.
- When removing the lithium battery from the vacuum device, please remove the ring, bracelet, necklace and watch.
- The short-circuit current generated by a battery is enough to adsorb the ring (or similar items), causing severe burns.
- Before removing the battery pack, please wear eye protection cover, gloves and protective clothing.
- Be careful not to touch the wire or any metal parts, or it will cause spark or short circuit.
- Do not smoke, spark or flame near the cleaner, or it will ignite the battery and produce gas.
- Avoid exposing the battery to fire or high temperature, otherwise it may cause explosion.

Note!

In case of battery leakage, avoid contact with the damaged battery and put it in a plastic bag.

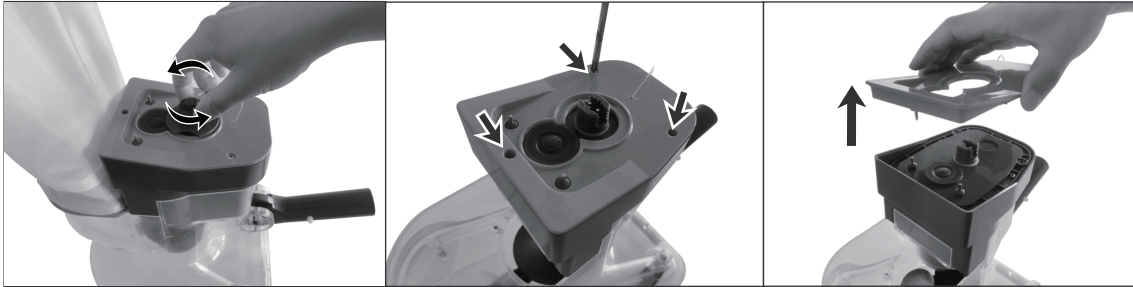
If skin or clothing is in contact with acid, wash immediately with plenty of soap and water

If the eyes are in contact with acid, rinse the eyes with water for at least 15 minutes and send them to a doctor for treatment.

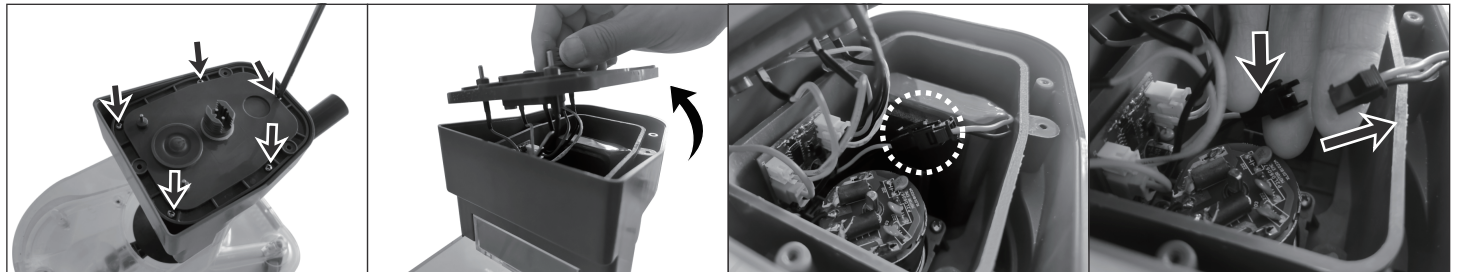
Battery replacement

NOTE: User must consult dealer before any battery replacement.

1. Loosen the sealing cover of the charging port in a counterclockwise direction, unscrew the top three screws with a screwdriver, and open the cover, as shown in the following figure.



2. Use a screwdriver to unscrew the five screws on the motor cover, open the cover and find the battery connection wire. Press the clip on the connector and then pull it out, as shown in the following figure.



3. After taking out the battery, please wrap the connector with Electrical tape immediately to avoid short circuit caused by contact between two wire terminals.









4. After replacing the battery, follow the disassembly steps to reinstall the battery and other parts.

Troubleshooting

Problem	Possible causes	Solution
The cleaner don't capture debris.	The battery is low	When the switch light is on for 2 seconds and off for 1 second, it will flash slowly for 10 times and stop the machine to turn off the light. Turn off the light and recharge. Once the charging is complete, turn off the switch and restart it to operate normally for more than 75 minutes.
	Impeller blockage	When the rotor is blocked, the switch light flashes continuously at 0.5 second intervals, and the motor stops. Check the impeller and clean the stuck leaves or stones by hand if found stuck. Then, turn off the switch, turn off the light, and restart the switch to ensure normal operation.
	Impeller damage	Please contact your dealer for replacement.
	Garbage blocking the suction port	Clean the garbage
	The filter bag is full	Clean the garbage

Problem	Possible causes	Solution
Garbage flows out from the bottom of the transparent component	The filter bag is full, Backflow of water flow	Clean or replace the filter bag
	The anti backflow plate is broken	Replace the anti backflow plate
Garbage leaking out of the filter bag	Filter bag is broken	Replace the filter bag
Switch not working or out	Damaged circuit board	Please contact your dealer for replacement.
	Battery depletion / damage	Recharging/Please contact your dealer for replacement.
	Motor damage	Please contact your dealer for replacement.
	There is rubbish around the sener or sener oxidataion	Cleaning the sener by a paper, or a cloth, or a brush
Handle/pole connector cannot be secured in assembly	V-Shape clip broken	Using the new V-Shape clip
Cleaner unable to charge	Battery damage	Please contact your dealer for replacement. Warning! Please purchase the original lithium battery for replacement to avoid damage to the cleaner.
	Charger damaged	Please contact your dealer for replacement. Warning! The wrong charger will cause damage to the machine and battery, and this situation is not guaranteed.
Explanation of the differences in the different states of indicator lights	Long on light	Normal working state
	Slow flashing of the light	The light flashes for 2 seconds and 1 second, and then goes out after about 30 seconds, indicating that the battery is depleted (refer to the battery depletion plan for the solution)
	Fast flashing of lights	If the lights keep flashing at intervals of 0.5 seconds, the impeller will get stuck and a blockage will occur (refer to the impeller blockage solution for the solution).

Environmental Programmes

     	<p>Please respect the local regulations and help to protect the environment.</p> <p>Return non-working electrical equipment to a facility appointed by your municipality that properly recycles electrical and electronic equipment, Do not dispose them in unsorted waste bins.</p> <p>For items containing removable batteries, remove batteries before disposing of the product.</p>
---	---

We reserve the right to change all or part of the features of the articles or contents of this document, without prior notice.