



Heating Air Blower

MANUAL INSTRUCTION

Products Performance:

- Large wind, low noise and without obvious noise from high frequency
- Heater quick-dry function
- Thermal protector of TP16050(Dezhou Equipment)
- There is fuse inside the motor
- Insulation class F
- Recognize certified: CE
- Noise: noise of air blower pump with a nozzle(as follow)

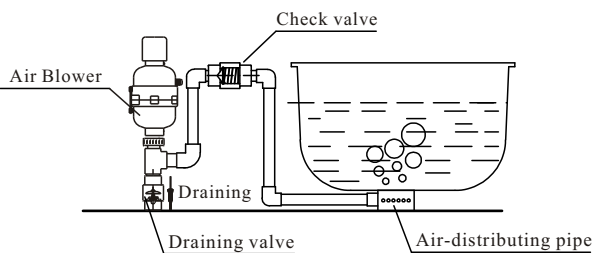
Model	APW400		APW700		APW900	
	single stage	double-stage	single stage	double-stage	single stage	double-stage
Average noise dB(A)	75	73	78	75	80	78

Parts And Materials:

- Pump casing: high temperature resistant Reinforce plastic
- Air switch: 15A, 250V(Optional)
- Carbon brush: using import materials from Japan life $\geq 1000h$

Using and Installing:

- The numhber of nozzle installed should be more than. the number of regulation minimum.
- The installation of distributor must be higher than the using water-level in case water come into air blower pump.(Fig.1)
- The connect pipe of air blower pump must use resist heat pipe ($>100^{\circ}C$ won't transform).
- Air blower pump must be installed fixed, and theconnect pipe must be fastened.



(Fig.1)

Configurations table

With plug	No plug
(180W)/With heat element(180W)	No heat element
With air switch	No air switch

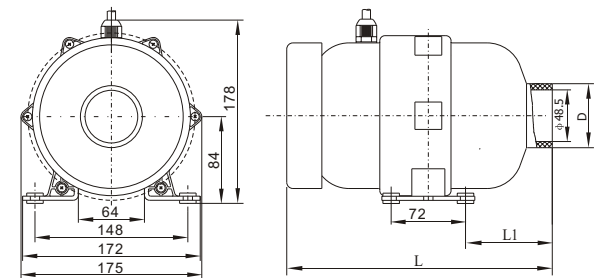
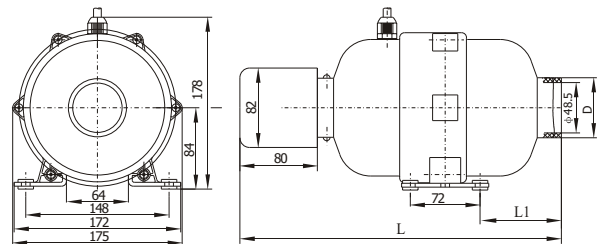


G model

Products model and the main technology parameter

Model	Power(W)	Number of Nozzle
APW400	360~400	12-24
APW700	630~700	16-32
APW900	820~900	20-40

Installation Structure



Model	motor	Size(mm)		
		L	L1	D
APW400/700/900	Single stage	332	84	φ 62
APW400/700/900	Double-stage	352	104	
APW400/700/900	G model single stage	254	84	1/2 FBT
APW400/700/900	G model double-stage	274	104	

D in fig.is thread connection that union of φ 32、 φ 33.5、 φ 48.5 and φ 50 is available.

D in fig.is direct connection that only φ 48.5 available.

CAUTION !

- Air blower pump must be grounded in order to prevent electrical shock or injury.
- The air distributor must be installed higher the water level of tub, in order to prevent water flow into air blower.
- Outlet of air blower pump can not be stuffed up when it is operating.
- When the outlet air flow is too small, the air temp-erature will increase, pay attention to prevent scald.



Do not dispose this product as unsorted municipal waste. Collection of such waste separately for special treatment is necessary.