

CONSUMER WARRANTY & SERVICE INFORMATION

*Distributors ONLY warrant products with an active
Warranty Registration*

ALWAYS ACTIVATE YOUR WARRANTY IMMEDIATELY ON
<https://nauticaseascooters.com/pages/warranty>

Distributors in the United States and Canada provide a Standard Limited Warranty for 6 months from the date of purchase for new products. If you're not located in the United States or Canada, please contact your Local Distributor for warranty arrangements in your territory. Please visit www.seascooter.net for Distributor / Service Center details. Distributors ONLY warrant NAUTICA Seascooter products purchased from an authorized dealer and with an original purchase receipt. All warranties are limited to a single original owner on the purchase of new and current product from an authorized reseller. Closeouts, Discontinued and Secondary sales of any kind including "like new" or out of box are not eligible for warranty consideration.

This warranty gives the consumer specific legal rights, and those rights may vary from place to place. Ask your Local Distributor for the warranty period in your region by calling their Service Center. Any part of the product supplied by the Distributor and found in the reasonable judgment of the Distributor to be defective in material or workmanship will be repaired or replaced then returned by the Distributor without charging for parts and repair costs. The product including any defective part must be sent to the Distributor within the warranty period. The customer will pay for the expense of delivering the product to the Distributor.

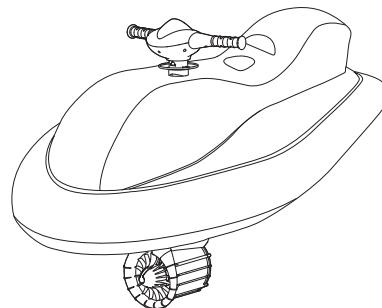
This warranty does not cover any product that has been subject to misuse negligence or accident, or that has been operated in any way contrary to the operating instructions as specified in the User Manual. Any flood, loss or damage, for any reason, that is caused by accidental release and sinking of the unit, or from flooding an o-ring sealed or water tight area will not be covered under warranty. This warranty does not apply to theft, loss, abuse or tampering, lack of maintenance, improper storage, exposure to excessive temperature, extended sunlight, material interactions, deteriorating chemicals or fumes, any damage to the product that is the result of improper maintenance or parts replacement performed by someone other than the official Distributor Service Center or to any product that has been altered or modified so as to change its intended use. This warranty does not extend to repairs made necessary by normal wear or by the use of parts or accessories which are either incompatible with the product or adversely affects its operation, performance or durability.

← SEE NEXT PAGE

LICENSED PRODUCT

NAUTICA

WAVEMAKER



User Manual
English Version

BC



WARNING:

Only adult can use the battery charger to charge the battery.

FCC Statement

(For USA Regulation Only)

This device complies with Part 15 of the FCC Rules. Operation is subject to the following two conditions:

- (1) This device may not cause harmful interference, and
- (2) This device must accept any interference received, including interference that may cause undesired operation.

Warning: Changes or modifications to this unit not expressly approved by the party responsible for compliance could void the user's authority to operate the equipment.

NOTE: This equipment has been tested and found to comply with the limits for a Class B digital device, pursuant to Part 15 of the FCC Rules. These limits are designed to provide reasonable protection against harmful interference in a residential installation. This equipment generates, uses and can radiate radio frequency energy, if not installed and used in accordance with the instructions, may cause harmful interference to radio communications.

However, there is no guarantee that interference will not occur in a particular installation. If this equipment does cause harmful interference to radio or television reception, which can be determined by turning the equipment off and on, the user is encouraged to try to correct the interference by one or more of the following measures:

- Reorient or relocate the receiving antenna.
- Increase the separation between the equipment and receiver.
- Connect the equipment into an outlet on a circuit different from that to which the receiver is connected.
- Consult the dealer or an experienced radio/TV technician for help.



Discarded electrical appliances are recyclable and should not be discarded in the domestic waste! Please actively support us in conserving resources and protecting the environment by returning this appliance to the collection centers (if available).



User manual is also available in PDF format, contact your local distributor to a copy if needed.

Contents

Introduction	1
Parts Diagram	2
Warnings	3
Assembling the WAVEMAKER	5
Battery Use	7
Charging the Battery	11
Using the WAVEMAKER	15
Care & Maintenance	16
Trouble Shooting	18
Technical Specifications	21

Introduction

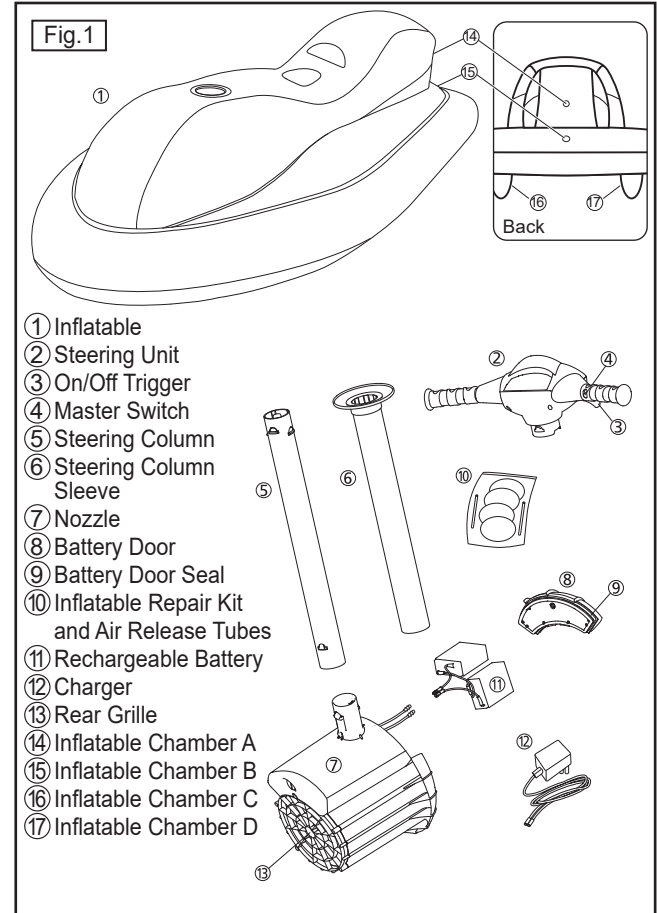
Experience a totally new Aqua Sport Adventure with the WAVEMAKER.

The WAVEMAKER is easy to assemble and easy to drive.

- Speed up to 2 mph (3.2 km/h)
- Runs up to 1 hour with Normal use

Please take time to study this user manual before using your WAVEMAKER.

Parts Diagram





WARNING



WARNING:

CHOKING HAZARD – Small parts.

Not for children under 3 years.

This is not a lifesaving device. Do not leave child unattended while device is in use. Only to be used in water in which the child is within its depth and under adult supervision.

THIS IS NOT A BOAT, DO NOT use for navigational purpose.

Use in a pool or in calm water and close to shore –

DO NOT use in the open sea.

- Read the User Manual carefully before using the WAVEMAKER.
- Keep the packaging since it contains important information.
- Do not operate the WAVEMAKER for long periods out of the water to avoid damage.
- The WAVEMAKER must be assembled by an adult.
- An adult must be responsible for battery safety at all times, during use, storage and charging.
- A child under 8 years old should never operate the WAVEMAKER.
- Always wear an Approved Personal Floatation Device / Approved Life-Preserver when using the WAVEMAKER.
- The WAVEMAKER is designed to hold ONE person not exceeding 155 lb / 70 kg.
- Never place body parts, clothing or other objects in the vicinity of the propeller.
- DO NOT wear loose or flowing clothing that could be drawn into the propeller.

- DO NOT use at night or in low light situation.
- User with long hair should tie it up or wear a swimming cap when using the WAVEMAKER.
- Particular care should be exercised when using the WAVEMAKER near anybody with long hair.
- ALWAYS inspect the area to ensure it is free of hazards or obstacles such as swimmers before using the WAVEMAKER. NEVER ride over swimmers or other objects.
- ALWAYS ensure sufficient charges remains in the battery to return to the poolside before using the WAVEMAKER.
- Always charge battery to its fullest before using the WAVEMAKER.
- The WAVEMAKER is to be operated in water only when fully assembled in accordance with the instructions.
- Do not use alcohol or mind-altering drugs prior to using this product.
- ALWAYS keep the WAVEMAKER out of direct sunlight when not in use. HEAT KILLS BATTERIES AND IT MAY EXPLODE OR LEAK.
- ALWAYS remove the battery from the unit when not in use.
- NEVER leave in or near the water when not in use.
- Adults should inflate the chambers in numbered sequence.
- Batteries are to be inserted with the correct polarity.
- Exhausted batteries are to be removed from the toy.
- Always check your WAVEMAKER works properly before use.
- Do not over inflate the inflatable.
- This is not a towable product. Do not tow from any vehicle.

Assembling the WAVEMAKER

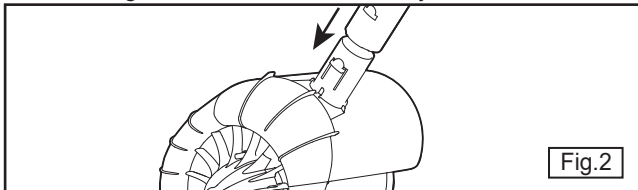
1. Use a pump (not included), to blow up the Inflatable. Make sure that the valve for each chamber is properly closed once inflated.

Adults should inflate the chambers in numbered sequence (See Fig. 1).

① Chamber C & D > ② Chamber A > ③ Chamber B

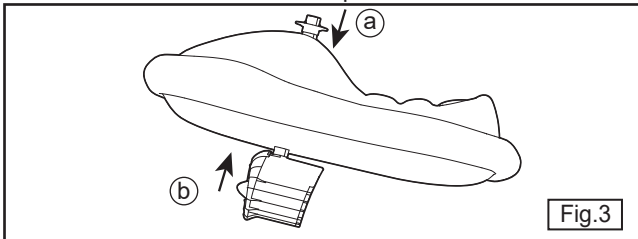
DO NOT OVER INFLATE THE INFLATABLE.

2. Connect the Steering Column to the Propulsion Unit (See Fig. 2). You will hear a "click" sound once the Steering Column has been correctly connected.



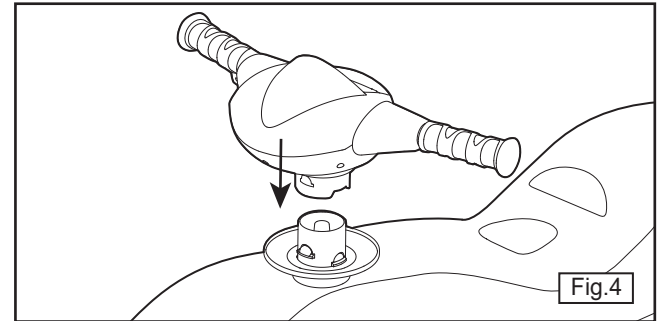
- 3a. Slide the Steering Sleeve into the hole in the Inflatable from the top.
- 3b. Slide Steering Column / Propulsion Unit assembly from the bottom of the inflatable through the Steering Sleeve. You will hear a "click" sound once the Steering Column has completely passed through the Steering Sleeve (See Fig. 3).

Tip: If the Steering Column Sleeve is stuck, pour some water to lubricate and then push it down.

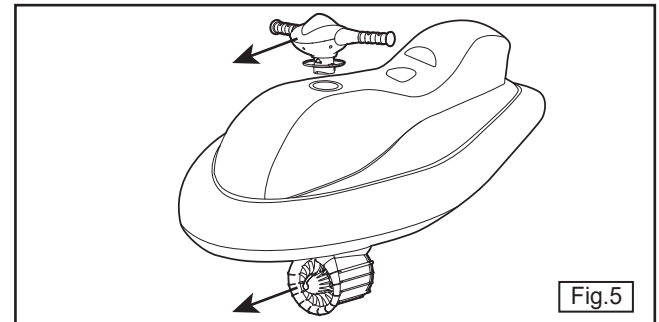


5

4. Attach the Steering Unit to the Steering Column - you will hear a "click" sound once it has been properly attached (See Fig. 4).



Make sure the Propulsion Unit and Steering Unit are aligned correctly (See Fig. 5).

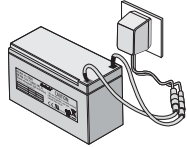


The WAVEMAKER is now ready for battery installation.

6



WARNING BATTERY SAFETY



RE-CHARGE THE BATTERY
AT LEAST
**3 EVERY
MONTHS**

- Must remove and store the battery separately from the unit when not in use!
 - Must re-charge the battery after use **WITHIN 24 HOURS**.
- Must re-charge the battery at least **EVERY THREE MONTHS** when not in use.

User Manual must be read and understood before use.

Please read and follow the **Battery Safety Instruction**.

Incorrect battery maintenance may reduce the battery life and influence its function.



CAUTION BATTERY SAFETY

- **Our lead-acid battery is designed specifically for each Seascooter. For your own safety, NEVER REPLACE THE ORIGINAL SEASCOOTER BATTERY WITH AN AFTERMARKET BATTERY.**
- Only Seascooter with original battery will be warranted by our service center.
- Always contact official dealer/service center to service the Seascooter.
Any changes made by consumer/authorized parties will void the warranty of the Seascooter.
- Visit our website to purchase replacement battery for Seascooter.
- Visit our website to find an original equipment battery distributor in your region.

www.seascooter.net



CAUTION

- Your WAVEMAKER is supplied with a battery that needs to be treated carefully as it will release potentially explosive gasses during its normal cycle of use (off-gassing). Failure to do so can result in an explosion occurring. Please read the entire manual thoroughly and follow all instructions.
- Always remove the battery from your WAVEMAKER when it is not in use and store separately in a well ventilated area where it is out of the reach of children and away from heat and ignition sources.
- Do not attach the battery in your WAVEMAKER until prior to using it.
- Before disconnecting/connecting any cables, open the battery door and allow two minutes for any explosive gases to dissipate.
- Do not use/store/charge the battery in temperatures above 40°C (104°F) as excessive off gassing may occur. Keep the battery and WAVEMAKER in the shade when not in use.
- Always ensure the unit is dried thoroughly before opening the battery door.
- Only use the charger supplied with the WAVEMAKER.
- The battery supplied with your WAVEMAKER releases a potentially explosive gas during charging. Charging should only take place in a well ventilated area, away from children and open flames or other ignition sources (cigarettes, sparks). Never charge the battery while still in the WAVEMAKER.
- Charge the battery as soon as possible after use within 24 hours.



CAUTION

- Always charge the battery to the maximum before using the WAVEMAKER.
- Always remove the battery from the battery housing before charging.
- Always connect charger jack to the battery first and then plug charger into the electrical socket/plug.
- After charging, disconnect from the electrical socket/plug first and then disconnect the battery from the charger.
- After charging is complete the battery will continue to emit gas. Wait at least 30 minutes after charging before removing the battery from the charger or placing the battery into the battery housing. Failure to do so could result in an explosion.
- Do not place battery into your WAVEMAKER until immediately before use.
- Remove battery from charger once fully charged.
- Never charge the battery in a sealed container.
- Never charge the battery near water.
- Never short circuit the battery or battery connectors.
- Always ensure the charger is dry before use.
- The charger gets quite warm in use – this is normal.
- If in doubt of the state of the battery, recharge it until the indicator on the battery charger indicates a full charge.
- Always keep the battery terminals clean.
- To prevent short-circuiting or fire, keep the battery away from other metal objects when carrying or storing.
- To prevent short-circuiting or fire, always ensure the charging area is safety during charging.



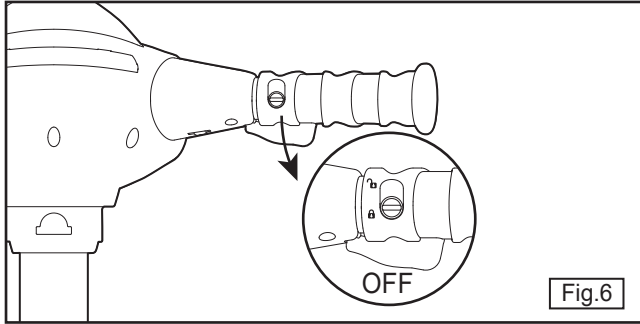
WARNING:

- The transformer or power supply is not a toy.
- The instructions concerning persons (including children) with reduced physical, sensory or mental capabilities, or lack of experience and knowledge and children playing with the appliance are not applicable.
- The connector must be removed before the appliance is cleaned and that the appliance inlet must be dried before the appliance is used again.
- Detachable power supply part shall be provided with the part of class III construction of the appliance.
- The transformers or battery chargers used with the product are to be regularly examined for damage to the cord, plug, enclosure and other parts, and in the event of such damage, they must not to be used until the damage has been repaired.

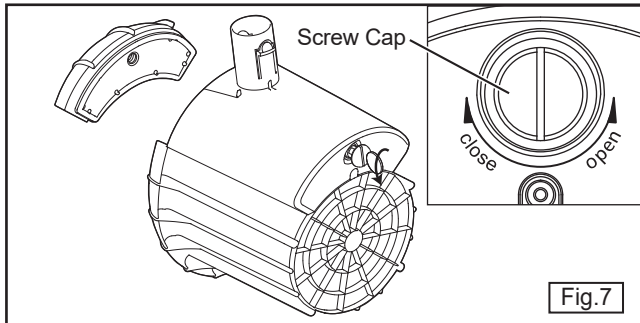
Charging the Battery

To charge the battery follow these instructions.

1. Always ensure that the Master Switch is OFF (See Fig.6).

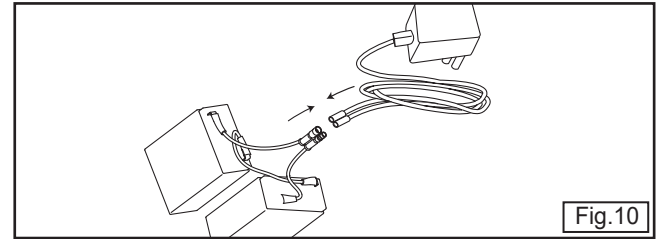
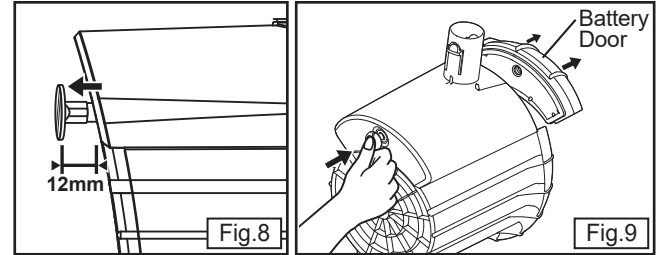


2. Always ensure that the WAVEMAKER is out of the water, dry and placed in a dry area.
3. Use a small coin to unscrew the Screw Cap counter-clockwise. (See Fig.7).



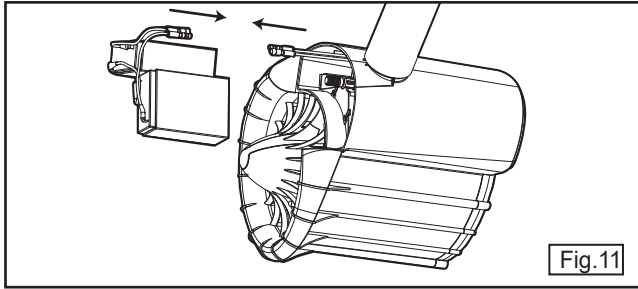
11

4. Pull out the Screw Cap slightly to a maximum of 12mm ONLY. DO NOT PULL OUT THE SCREW CAP AND STEM COMPLETELY (See Fig. 8).
5. Press on Screw Cap to release locking mechanism of Battery Door (See Fig. 9).
6. Pull out Battery Door part to access battery.

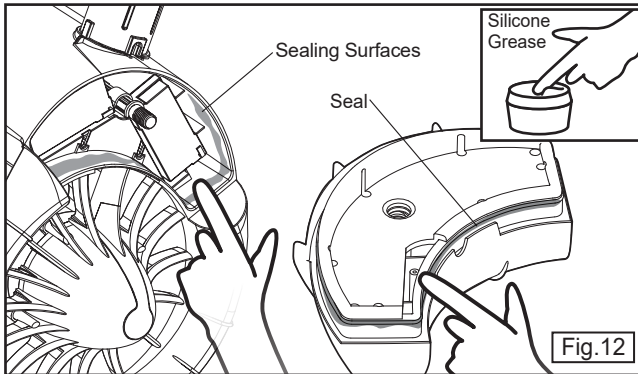


7. Allow two minutes for any gasses to dissipate.
8. Take out the battery from the Battery Compartment and place on a level surface.
9. Connect the battery to the Charger (See Fig. 10).
10. Plug Charger into electrical socket/plug, and turn on the supply.
11. Charging will take 3-4 hours for a fully discharged battery. When the battery is charging the LED on the Charger turns RED. When the battery is charged the LED turns GREEN.

12

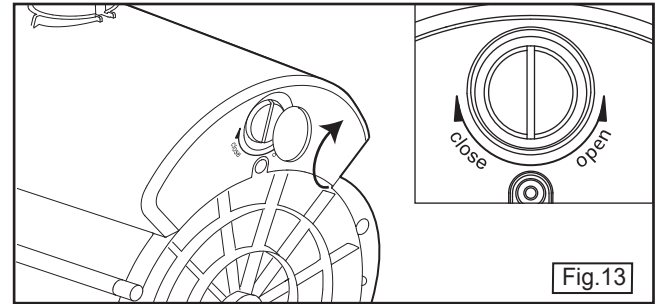


12. Unplug the Charger from the electrical socket/plug.
13. Allow battery to stand for 30 minutes before using it.
14. Unplug the battery from the charger.
15. When ready for use, install the battery and making sure to insert it the right way round. (See Fig. 11).
16. Make sure the seal and sealing surfaces are clean and lubricated with silicone grease EVERYTIME (you can buy this at your local hardware store) before replacing the Battery Door (See Fig. 12).



13

17. Replace the Battery Door and turn the Battery Door Screw making sure it is tightened completely (See Fig.13).



Replacing a flat battery with a fully charged battery.

1. Follow the steps 1 to 8 above.
2. Remove the flat battery.
3. Install and connect the charged battery.
4. Follow steps 16 to 17.

Buying Rechargeable Batteries

It is a good idea to have a second battery so that when one has run out you can swap it over with a charged one. Contact your local customer service center/distributor to purchase additional rechargeable batteries.

Battery & Charger Ratings

Rechargeable battery: 12V / 2.8 Ah

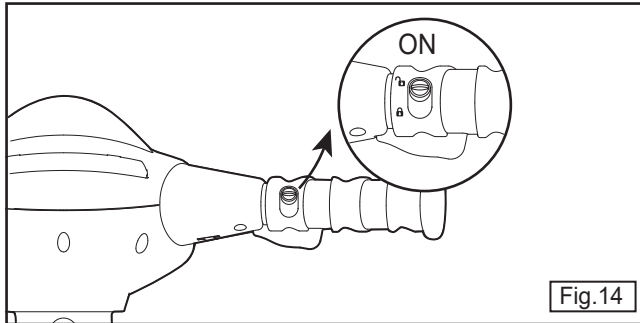
Charger: Output-12V / 0.8A

14

Using the WAVEMAKER

When you buy the WAVEMAKER the battery is disconnected and needs to be charged. Follow the Battery Instruction on pages 7 to 10 and charging instructions on pages 11 to 14.

1. Make sure the rechargeable battery has been fully charged.
2. Place the WAVEMAKER in the water.



3. Turn the Master Switch to 'ON' position (See Fig. 14).
4. Help your child to sit on the WAVEMAKER - a Approved Personal Flotation Device / Approved Life-Preserver should always be worn by your child.
5. The rider simply has to pull the Trigger to start, turn the steering unit to maneuver and release the Trigger to stop.

Care and Maintenance

Disassembling and Storing the WAVEMAKER

DO NOT leave the WAVEMAKER in the water. Always take the unit out of water when not in use.

1. Always rinse the WAVEMAKER in fresh water and allow it to dry before storage immediately after use.
2. Unclip the Steering Unit, remove the Steering Column Sleeve, the Nozzle and Steering Column and unclip the Steering Column.

Tip: If the Steering Column Sleeve is stuck, pour some water over it to lubricate and then remove.

3. Open the Battery Door and remove the rechargeable battery (see also section on Rechargeable Battery Care for more storage information).
4. Deflate the inflatable fully. To do this insert one air release tube (packed with the repair kit) in each valve and press gently on the inflatable until all air has been expelled.
5. Store the WAVEMAKER in the original box in a dry place - ambient temperature for storage should be within -10 to 40 degree (14°F to 104°F).

Battery and Charger Care

1. The battery should be recharged as soon as possible after use.
2. If the WAVEMAKER is not used for extended periods, the battery should be removed from the unit and charged overnight, every three months.
3. Only use the charger supplied with the WAVEMAKER.
4. Never place the battery in a sealed container when charging.
5. Never short-circuit the battery or battery cable.
6. Never place/store the battery near a radiator/fire, etc.
7. To store the battery, remove it from the WAVEMAKER and keep in a place that is dry and cool with the rest of the WAVEMAKER in the original box.
8. Rechargeable batteries are to be removed from the WAVEMAKER before being charged.
9. An adult must be responsible for battery safety at all times, during use, storage and charging.
10. The battery charger should be required examined by an adult for potential hazard, such as damage to the cable or cord, plug, encloser or other parts, and that, in the event of damage, the charger must not be used until that damage has been properly removed.
11. The WAVEMAKER liable to be cleaned with liquids is to be disconnected from the transformer or power supply before cleaning.

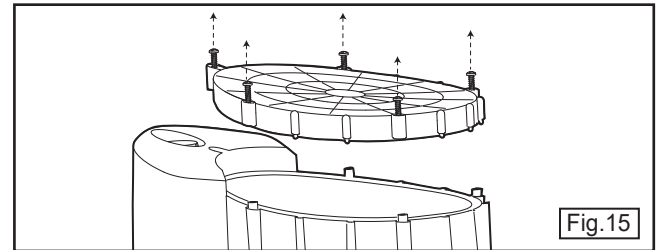
If the WAVEMAKER does not work:

1. Check the battery is fully charged, if in doubt of battery state, recharge the battery until Charger indicates full charged.
2. Make sure the rechargeable battery connector is connected.
3. Make sure the Master Switch is in the 'ON' position.
4. Make sure the battery compartment is dry.
5. Make sure the Propeller is not blocked.

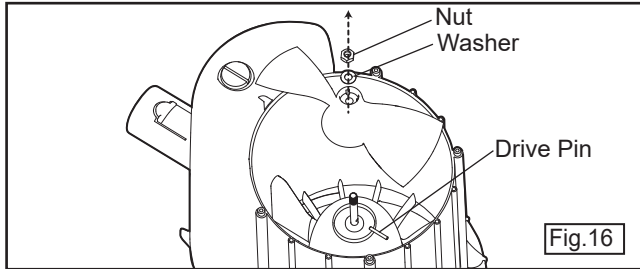
Blocked Propeller

If the propeller becomes blocked, it will be necessary to open the Grille to remove the obstruction. Open the grilles to remove obstruction:

1. Remove WAVEMAKER from water and dry completely.



2. Make sure the master switch is in the 'OFF' position.
3. Remove the battery - see page 11-12, step 1-8.
4. Unscrew rear grille (See Fig. 15).



5. Unscrew the propeller nut using an M6 socket (See Fig. 16).
6. Remove the washer, propeller and the drive pin (See Fig. 16).
7. Remove any blockage.
8. Replace drive pin, propeller and the washer, and reattach propeller nut.
9. Replace Rear Grille.

Sand or Grit on Seals

Ensure that sand/grit does not get on the seals as correct maintenance and care is essential. To remove sand or grit from the seals, rinse the seals in fresh water and apply fresh lubricant. If there is sand inside the Battery Housing, gently brush the sand from the unit taking care not to scratch the sealing surfaces.

Repairing the Inflatable

A repair kit is included in case the inflatable is accidentally punctured and needs to be repaired:

1. Locate the puncture - this can be done by inflating the inflatable and looking for air bubbles.
2. Deflate the inflatable product.
3. Clean area thoroughly where repair is to be made. Make sure it is completely clean and dry.
4. Flatten the surface around the punctured area.
5. Cut patch material to size.
6. Use only enough liquid cement to wet the back to repair area.
7. Press tightly to repair area and let it dry.
8. Do not inflate for 12 hours.
9. Inflate the inflatable and check there is no air leakage before use.

Maintaining Battery Door Seal

Always keep the Battery Door Seal clean and well lubricated with silicone grease which can be purchased from your local hardware store.

Technical Specifications

Unit Dimensions	(L) 58" x (W) 34" Inflated size (approx.)
Unit Weight	15 lb (6.8 kg) (with rechargeable battery)
Battery Type	1 x 12V / 2.8 Ah rechargeable battery
Battery Life / Fully Charge	*Runs up to 1 hour with normal use ^Continuous use up to 35 minutes
Speed	Up to 2.0 mph (3.2 km/h)

*Normal Use

The definition of normal use is based on the average general time of use the user activates the product in the water.

^Continuous Use

The definition of continuous use is based on a fully charged battery were by the Seascooter is used continuously in the water without stopping.

For more information on
Seascooter™ Products
 (Warranty, Customer Care / Maintenance,
 Parts & Battery Purchase)

PLEASE VISIT
www.Nauticaseascooters.com

All corresponding specification appear in this manual are correct at the time of printing.
 For the latest updates and further information on the complete range of the Seascooter™,
PLEASE VISIT www.Nauticaseascooters.com

This Product is not manufactured by Nautica. For consumer purposes,
 please contact Sport Dimension Inc. at 1-800-678-7873.

(US & CANADA MARKET ONLY)

Please visit our website at www.Nauticaseascooters.com to find out your local distributor.

Products covered by the following patents:

USA, Canada, EU, Australia, Japan, Hong Kong, China & Turkey
 US D471,506S / US D518,768S / D527,702S / US D506,176S / US D507,776S
 D512,678S / D519,911S / 6848385 B2 / US 7000559 B2 / US 7093554 B1 / 11/102,302
 0500577.8 / 0500578.0 / 0500579.2 / HK1072691 / ZL200530005661.5
 ZL200430079550.4 / ZL200430057359.X / ZL200530005662.X / ZL200530005663.4
 ZL200320103738.8 / ZL200520008894.5 / 1194933 / 1254107 / 1225250
 000330311-0001 / 000183900-0001 / 000183900-0002 / 000330279-0001
 000330295-0001 / 03020902.7 / 302949 / 302564 / 302563 / 302950
 302948 / 2005100230 / 200503474 / 29/268,724 / 11/595,675 / 000816376-0001

US & CANADA MARKET ONLY

Toll Free (US) : 1-800-678-7873

info@nauticaseascooters.com

www.Nauticaseascooters.com

Nautica™ and ™ are trademarks of Nautica Apparel, Inc.

©Nautica Apparel, Inc. nautica.com

In addition, this warranty does not cover items that experience normal wear and tear.

ALL IMPLIED WARRANTIES ARE LIMITED IN THE DURATION TO THE WARRANTY PERIOD. AND SUCH IMPLIED WARRANTIES INCLUDING MERCHANTABILITY, FITNESS FOR A PARTICULAR PURPOSE, OR OTHERWISE, ARE DISCLAIMED IN THEIR ENTIRETY AFTER THE EXPIRATION OF THE APPROPRIATE WARRANTY PERIOD. THE DISTRIBUTOR'S OBLIGATION UNDER THE WARRANTY IS STRICTLY AND EXCLUSIVELY LIMITED TO THE REPAIR OR REPLACEMENT OF DEFECTIVE PARTS AND RETURN OF THE PRODUCT TO THE CUSTOMER. THE DISTRIBUTOR DOES NOT ASSUME OR AUTHORIZE ANYONE TO ASSUME FOR THEM ANY OTHER OBLIGATION.

THE DISTRIBUTOR ASSUMES NO RESPONSIBILITY FOR INCIDENTAL, CONSEQUENTIAL OR OTHER DAMAGES INCLUDING, BUT NOT LIMITED TO EXPENSE OF RETURNING THE PRODUCT TO THE DISTRIBUTOR, LOSS OF USE OF PRODUCT AND LOSS OF TIME OR INCONVENIENCE.

THIS PRODUCT IS DESIGNED AND INTENDED FOR PERSONAL RECREATIONAL USE ONLY!

THIS PRODUCT IS NOT WARRANTED FOR COMMERCIAL OR RENTAL USE!

REPAIR WORK OR DELIVERY OF A REPLACEMENT DOES NOT EXTEND OR RENEW THE WARRANTY PERIOD.

WARRANTY SHALL AUTOMATICALLY BE VOID IF DAMAGE IS RESULT OF NON-ORIGINAL PARTS.

LIMITED WARRANTY for Seascooters with camera mount:

- ALWAYS inspect to ensure the product works properly every time before use. Warranty of this product does not cover any damages due to misuse.
- Failure to follow the user(s) instructions on packaging and/or user(s) manual may result in damages or loss of your cameras including but not limited to any user's personal items, all of which are not covered under warranty of this product.
- Use at your own risk. Manufacturer(s) and/or suppliers/agents are not responsible for any damages/repairs, loss to cameras/electronic items including but not limited to any user's personal items directly and/or indirectly resulted in the use of this product. Damage(s) resulting from any use, misuse, accident, and normal wear and tear are understandably not covered under this product warranty nor be responsible by manufacturer(s) and/or suppliers/agents.

EXCLUSIONS

BATTERY. This warranty does not include the battery.

Never replace the original SEASCOOTER BATTERY with an AFTERMARKET BATTERY. Seascooter with aftermarket battery will not be covered by this warranty.

CUSTOMER ENQUIRIES

If your unit is not operating, please refer to your User Manual before contacting our Customer Service Center. For any damage or repair work required, please do not return your product to the store where it was purchased.

RETURN / REPAIR POLICY

Customers must contact their Local Distributor Service Center to ask for an official Claim Form. The Claim Form must be returned with the customer's contact details and a photo of the Seascooter, defective parts, the serial number and the Original Purchase Receipt. The Distributor Customer Service Center will review the case and issue a Return / Repair Authorization Number before sending the product to the Distributor Service Center. Returned products must be shipped with original packaging including the polystyrene packing material and all defective parts. Please contact your Local Distributor Service Center for assistance in handling your case.

Please visit our website www.Nauticaseascooters.com for a listing of most update distributor contacts and service center contacts.

RETURN / REPAIR PROCEDURE

1. Call the Customer Service Center for your Return / Repair Authorization Number.
2. Make a copy of your Proof of Purchase (receipt).
3. Pack the defective unit in its original packaging including the polystyrene foam and include the unit and all defective parts.
4. Attach the copy of your Proof of Purchase (receipt) to the outside of the box (clearly visible), together with the Return / Repair Authorization Number.
5. Ship the package to the Service Center on your cost.

PLEASE NOTE: Deliveries that do not have the Proof of Purchase (receipt) and Return / Repair Authorization Number attached clearly to the outside of the box, will not be accepted by the Service Center.

For any questions or queries you may have regarding your SEASCOOTER™, please follow the below steps for easy and fast resolution:

- STEP 1-

Please read your User Manual. For a copy of the User Manuals, please visit www.Nauticaseascooters.com

- STEP 2-

Go to www.Nauticaseascooters.com and see our FAQ section to find instant answers.

- STEP 3-

Contact one of our Customer Service representatives at the Customer Service Center in your region.