



RANGE OF HOT TUBS AND SWIMSPAS

THE BEST HYDROMASSAGE
AVAILABLE TO YOU





Index

Benefits of Astralpool Hot Tubs	04
Range of Residential Hot Tubs	
Ocean Dreams	12
Essential	16
Origins	20
Swimspa	24
Inground	28
Range of Commercial Hot Tubs	32



Benefits of AstralPool Hot Tubs

Water and Health

The effects of water through hydromassage can treat pain and relax the most sensitive parts of the body.

Stress reduction guaranteed

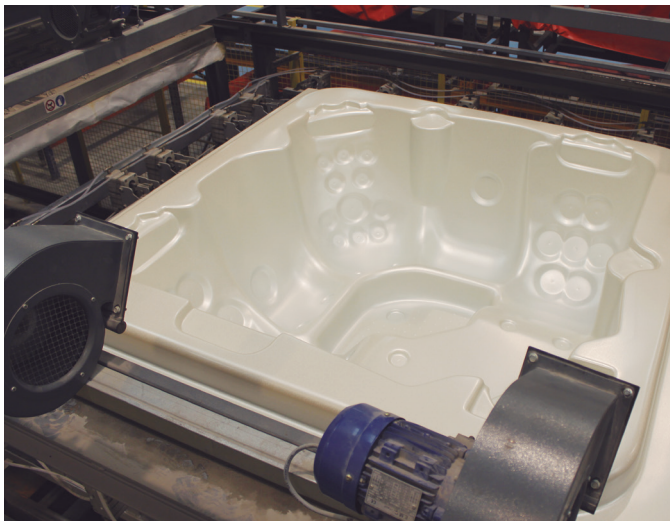
A good emotional balance is achieved through the chromatherapy, music therapy and aromatherapy systems.

A new living space

Enjoy a unique moment, of peace and relaxation, and special moments with your partner, family or friends.

Unique experiences

Have a spontaneous relaxing evening, enjoy the benefits of a vigorous massage after playing sports, enjoy a massage at home every day of the week, immerse yourself in the sound of the flowing water...



European Manufacturing and Warranty*

AstralPool has been designing and manufacturing hot tubs for 30 years. The designs of the hot tubs are constantly updated so that they always offer the best comfort and improve your quality of life.



Components



Acrylic



Frame

* Does not apply to Origins Range



Hydromassage

A massage designed for each specific part of your body



Localised pressure massage

This type of massage offers continuous pressure on a specific part of the body, eliminating any muscle contractures.



Anti-stress rotation massage

Performs a circular motion with its rotary jet. Ideal for combating the stresses caused by poor posture or occasional strains.



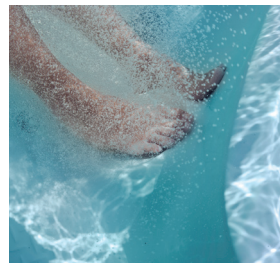
Draining rotation massage

Thanks to the impact of the water on the body, it creates a lipoactive and body-firming effect on the body.



Air massage

The air bubbles have a relaxing effect on all of the muscles in the body.



Reflex foot massage

Foot massages help to alleviate muscle and joint pains. This type of application produces a pleasurable sensation and helps you to sleep.

Energy efficiency

EcoSpa, the best thermal insulation for your hot tub

The EcoSpa option is a vital element that has a direct impact on the hot tub's maintenance costs. EcoSpa insulation helps to retain heat and reduce the number of hours of operation of the electric heating. A properly-insulated hot tub uses less electricity. By combining the use of an isothermal cover with the EcoSpa system, you can keep the power consumption of your hot tub down to as little as €20 per month.

An efficient European hot tub:

With EcoSpa, to keep the water at 37°C	5.28 kWh
Without EcoSpa, to keep the water at 37°C	10.80 kWh



- 1 Heavy duty ABS base.
- 2 Second insulation layer. Panel with high thermal and acoustic insulation.
- 3 Polyurethane thermal insulation layer with a density of 30%.
- 4 Insulating cover with a thickness of 100 to 130 mm.



blue
connect plus

Advanced technology connected to your smartphone

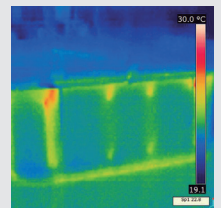
Blue Connect Plus is a smart hot tub water analyser. It controls the quality of your water and informs you about the number of products available for your hot tub. All from your smartphone.



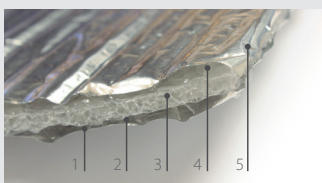
Nordic Insulation System

The NORDIC INSULATION SYSTEM is the insulation system designed for cold environments that ensures the improved energy efficiency of your hot tub.

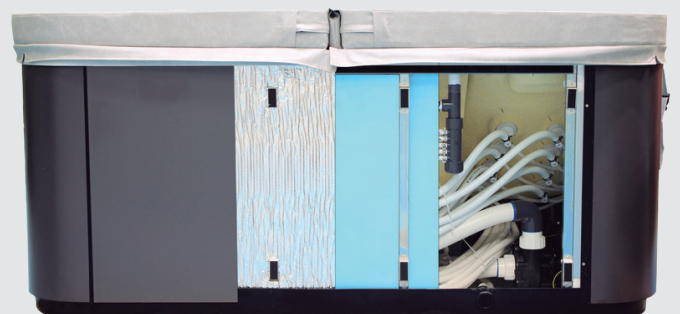
The NORDIC INSULATION SYSTEM consists of 10 mm of insulating material, composed of 5 layers. This insulating layer is on the sides and curves of the cabinet, creating an insulating air chamber inside it. The insulating layer that surrounds the entire cabinet is 10 mm thick, with material composed of 5 layers:



Heat leak test performed with the Nordic Insulation System



- 1 Aluminium
- 2 RC9 Foam + Low Density Polyethylene (with a double layer)
- 3 FONEX non-cross-linked polyethylene foam (20 kg/m³)
- 4 RC9 Foam + Low Density Polyethylene (with a double layer)
- 5 Aluminium



An entertainment centre

Chromatherapy

Chromatherapy is the name of the non-conventional medicine which seeks to treat ailments and diseases with colours.

It has a biological and psychological effect. The coloured light uses physiological stimulus to stimulate spontaneous responses from the body.



Aromatherapy

It provides real healing properties and completes the range of benefits created by the hot tub. The natural aromas are released from the hot tub, achieving harmony and balance.



Musictherapy

Music therapy seeks to use the properties and sound of the music to help achieve a balance of body and mind.



Wifi Spa Control

The Balboa Wifi Spa Control is an application for your smart device (Android™ or iPhone®) which allows you to access your hot tub via the internet, wherever you are; whether you are at home or anywhere else, all that you need is a 3G, 4G or WiFi connection to be able to control your hot tub from your mobile phone or tablet.

With the Wifi Spa Control application, you can make sure that your hot tub is ready whenever you want to have a soak. Instead of having to go outside and press the buttons on the panel, the application allows you to start up the bath and change the settings of your hot tub from your mobile phone or tablet.

The application provides a complete control interface that allows you to set the temperature, activate the massage pumps and even set the filtration cycles.

Ultraviolet disinfection system in the Advanced range

The hot tubs equipped with the Ultraviolet system have a UV technology-based disinfection system which, thanks to the ultraviolet (UV) light, destroys the bacteria in the water.

The benefits of the Ultraviolet system are:

- It guarantees fresh, clean and clear water
- Efficient and safe disinfection of water
- The combined chlorine is degraded by the UV-C light
- It protects the water from germs
- It keeps the formation of mould, bacteria and algae under control
- It can reduce the use of chlorine and other chemicals by up to 80%
- It avoids the smell of chlorine and prevents irritation of the skin and eyes (red eyes)
- It is more environmentally friendly than traditional methods

With this system, your hot tub will have a clean and automatic system that eliminates bacteria, mould and algae and will protect your hot tub from germs without any kind of maintenance.

Our range of hot tubs



Ocean Dreams Range

A range of hot tubs designed for the most demanding user. Ergonomic hot tubs with high performance and configuration options.



Essential Range

The Essential range seeks to balance functionality, performance and cost.



Origins Range

Compact spas with all the Astralpool quality, basic features, and a variety of formats. An ideal model for those seeking a basic solution.



Swimspa Range

Swimspas are small residential pools. Versatile, powerful and compact. A health and wellness center available all year round.



Inground range

Our Inground hot tubs for private use are hydrotherapy systems designed to be built into the ground. They also come with a filtration system and sand filter.



Commercial Range

Hot tubs designed for commercial premises such as gyms, wellness centres, hotels etc. A large range of options and finishes that meet every need. Hot tubs with an acrylic and mosaic finish.



Ocean Dreams Range



High performance system

Each of the massage pumps has been designed to achieve maximum power and optimal consumption.

The hot tub has two powerful massage water pumps that feed the hot tub's 52 jets and 2 waterfalls and the 14 air relaxation nozzles.

Atlantida 70 Hot Tub

Our leading model



BENEFITS

Touch Panel

The TOUCH PANEL is a model that features an outstanding modern and minimalist design. The screen is made from high-quality materials with strong impact resistance and it is compatible with all Balboa control systems. The TOUCH PANEL button panel is intuitive and easy to use, offering a user-friendly experience, with various options to control the hot tub.

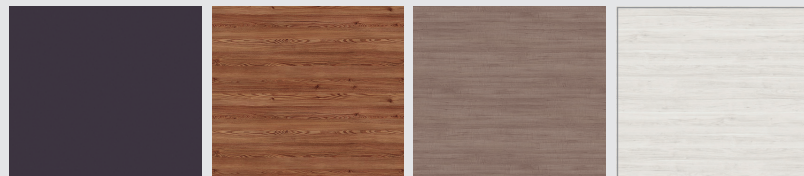
Chromatherapy centre

Carry out your chromatherapy sessions in the hot tub. The hot tub has 5 LED lights that light up the interior of the hot tub. Each of the hot tub's external controls light up in sync with the interior of the hot tub.





Cabinet with a modern design

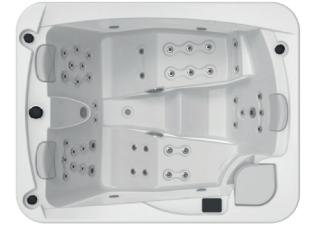
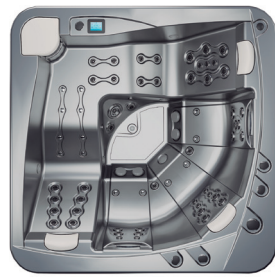
A sleek, even and screwless cabinet. The modern look of the Atlantida 70 Hot Tub cabinet is sure to impress. It is available in 4 different colours: Graphite, Thunder, Creek and Butterfly.



Technical Information



	PURE	NEW ART
REF.	68450	68449
General Specifications		
Dimensions (± 1 cm)	220 x 220 x 78	220 x 220 x 78
Positions (Seats / Loungers)	4 (4 / -)	5 (3 / 2)
Acrylic Colour	 44-White	
Cabinet Colour	 Solid Surface White	
Without Cabinet	-	-
Characteristics		
ECOSpa double thermal insulation	Yes	Yes
Nordic Insulation System	Optional	Optional
Bluetooth 4.1 audio system	Optional	Optional
Lumiplus chromatherapy LED	Yes	Yes
Stainless steel jets	Yes	Yes
Stainless steel bar	-	-
Blue Connect	-	-
Features		
Stainless steel jets	27	28
Air nozzles	12	14
Waterfalls	-	-
Headrests	2	3
Control Spa	Touch Panel	Touch Panel
Disinfection system	U.V.	U.V.
Aromatherapy	Yes	-
Chromatherapy	5 Leds + Illuminated Accessories	5 Leds + Illuminated Accessories
Wifi Spa Control	Optional	Optional
Frame and Cover		
Heavy duty metal frame	Yes	Yes
Insulating ABS base	Yes	Yes
Isothermal cover	Yes	Yes
Equipment		
Filtration pump	200 W	200 W
Massage pump	1,8 kW / 2 HP	1,8 kW / 2 HP
Air massage pump	1.150 W	1.150 W
Electric heating	3 kW	3 kW
Electrical power and Capacity		
Low amp power required (W)	3.400 W	3.400 W
Power required (A) at 230 V	14,6 A	14,6 A
Voltage 230 V	Yes	Yes
Water capacity	975 l	975 l
Weight of hot tub (Empty/Full)	450 kg / 1.425 kg	450 kg / 1.425 kg



EVOLUTION 70		ATLANTIDA 70		PACIFIC 70		OCEAN 70	
32474		62399		69130		69863	
233 x 233 x 91		216 x 216 x 90		216 x 216 x 90		216 x 167 x 74	
5 (3 / 2)		5 (3 / 2)		6 (5 / 1)		3 (1 / 2)	
 44-White		 59-Sterling		 65-Alba		 64-Pearl Shadow	
		 27-Silver					
		 Graphite		 Thunder		 Creek	
				 Butterfly			
Optional		Optional		Optional		Optional	
Optional		Optional		Optional		Optional	
Optional		Optional		Optional		Optional	
Optional		Optional		Optional		Optional	
Yes		Yes		Yes		Yes	
Yes		Yes		Yes		Yes	
Yes		Yes		Yes		Yes	
Optional		Optional		Optional		Optional	
56		52		51		42	
16		14		10		-	
-		2		2		-	
3		3		3		3	
Touch Panel + Auxiliar		Touch Panel		Touch Panel		Touch Panel	
U.V.		U.V.		U.V.		U.V.	
Yes		Yes		Yes		-	
5 Leds + Illuminated Accessories		5 Leds + Illuminated Accessories		5 Leds + Illuminated Accessories		5 Leds + Illuminated Accessories	
Optional		Optional		Optional		Optional	
Yes		Yes		Yes		Yes	
Yes		Yes		Yes		Yes	
Yes		Yes		Yes		Yes	
200 W		200 W		200 W		200 W	
2 x 2,2 kW / 3 HP		2 x 1,8 kW / 2,5 HP		2 x 1,8 kW / 2,5 HP		2,2kW / 3 HP	
400 W		400 W		400 W		-	
3 kW		3 kW		3 kW		3 kW	
5.200 W		4.400 W		4.400 W		3.400 W	
22,4 A		19,1 A		19,1 A		14,6 A	
Yes		Yes		Yes		Yes	
1.610 l		1.138 l		1.138 l		780 l	
378 kg / 1.988 kg		327 kg / 1.227 kg		327 kg / 1.465 kg		229 kg / 1.009 kg	

Essential Range



The Balance E hot tub is a compact model that is perfect for families because it has 5 positions: two loungers and three seats.

Its 31 hydromassage jets and 12 air injectors activate a unique massage circuit. The perfect hot tub to relax in the tub with your family or have a hydromassage session with friends.

Balance E Hot Tub

Our leading model

BENEFITS

Ergonomics and design

An ergonomic design improves the bathing experience. Our Essential spas are designed to make families feel comfortable and satisfied with their experience. The design creates a relaxing and peaceful atmosphere and helps to reduce stress.



Silent filtration

The filtration circuit is composed of a silent filtration system and a separate circuit, allowing the hot tub's water to be continuously filtered and cleaned at a low cost. The pump's low power consumption allows long periods of filtration. As it is a silent pump, this can be done at any time of the day.



A spa that is in optimal working condition

The Balance E hot tub and the models in the Essential range provide a balance between performance, features and cost.

Hot tubs with a practical format, designed to offer the user a customised thermal system.



Technical Information



	SELECT E		EMOTION E		
REF.	76894		69122		
General Specifications					
Dimensions (± 1 cm)	216 x 216 x 90		216 x 216 x 90		
Positions (Seats / Loungers)	6 (5 / 1)		5 (3 / 2)		
Acrylic Colour	 44-White	 59-Sterling	 65-Alba	 64-Pearl Shadow	 27-Silver
Cabinet Colour		 Graphite	 Thunder	 Infinity*	
Without Cabinet	Optional		Optional		
Characteristics					
ECOSpa double thermal insulation	Optional		Optional		
Bluetooth 2.1 audio system	Optional		Optional		
Lumiplus chromatherapy LED	Optional (+2 LED)		Optional (+2 LED)		
Stainless steel jets	Yes		Yes		
Features					
Stainless steel jets	51		32		
Air nozzles	-		12		
Waterfalls	1		-		
Headrests	3		3		
Digital control panel	Balboa TP600		Balboa TP600		
Disinfection system	Ozonator		Ozonator		
Aromatherapy	-		-		
Chromatherapy	1 LED		1 LED		
Frame and Cover					
Heavy duty metal frame	Yes		Yes		
Insulating ABS base	Yes		Yes		
Isothermal cover	Yes		Yes		
Equipment					
Filtration pump	200 W		200 W		
Massage pump	2 x 1,8 kW / 2,5 HP		1,8 kW / 2,5 HP		
Air massage pump	-		400 W		
Electric heating	3 kW		3 kW		
Electrical power and Capacity					
Low amp power required (W)	3.780 W		3.400 W		
Power required (A) at 230 V	16,8 A		14,6 A		
Voltage 230 V	Yes		Yes		
Water capacity	930 l		930 l		
Weight of hot tub (Empty/Full)	327 kg / 1.257 kg		327 kg / 1.257 kg		

*Only available for spas with EcoSpa + Bluetooth Audio + 3 LEDs.



BALANCE E

74134

EQUILIBRE E

73076

198 x 198 x 74

5 (3 / 2)

216 x 167 x 74

3 (1 / 2)



44-White



59-Sterling



Infinity

Optional

Optional

Optional

Optional

Optional

-

-

-

Yes

Yes

31

26

12

-

-

-

3

3

Balboa TP500

Balboa TP500

Ozonator

Ozonator

-

-

1 LED

1 LED

Yes

Yes

Yes

Yes

Yes

Yes

-

-

1,8 kW / 2,5 HP (2 Vel)

1,8 kW / 2,5 HP (2 Vel)

400 W

-

3 kW

3 kW

3.400 W

3.400 W

14,6 A

14,6 A

Yes

Yes

935 l

780 l

246 kg / 1.181 kg

229 kg / 1.009 kg



Equilibre E hot tub

Origins Range



The Baia model is a large spa with 3 seats and 2 comfortable loungers that allow you to relax while receiving a complete massage.

Equipped with 62 massage jets, it has 2 powerful massage pumps as well as an independent filtration circuit. The most complete spa in the range.

Baia Spa

Our reference model

BENEFITS

Two Loungers

This model has two loungers that allow you to relax with your partner while enjoying the massage or during the spa's chromotherapy sessions. The loungers are fully equipped and allow you to receive a massage on your back, legs, and feet.



New Furniture Design

In this spa, as well as throughout the range, you will discover our new Ash furniture design. A synthetic wood furniture, dark gray in color, that will be the best decorative complement for your garden or terrace.



High-Quality Finishes

The Baia model, as well as the other spas in the range, are manufactured following the quality standards of the Astralpool brand. Having a spa in this range ensures you a product with a long life and supreme quality.

Technical Information



BAIA

76173

REF.

General Specifications

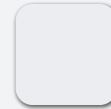
Dimensions (± 1 cm)

216 x 216 x 90

Positions (Seats / Loungers)

5 (3 / 2)

Acrylic Colour



44-White



59-Sterling

Cabinet Colour



Ash

Characteristics

Thermal insulation Green Layer

Sí

Stainless steel jets

Sí

Features

Stainless steel jets

62

Air nozzles

12

Headrests

3

Digital control panel

Balboa TP500

Disinfection system

Ozonator

Chromatherapy

1 LED

Audio System

Optional

Frame and Cover

Heavy duty metal or plastic frame

Yes

Insulating ABS base

Yes

Isothermal cover

Yes

Equipment

Filtration pump

200 W

Massage pump

2 x 1,8 kW

Air massage pump

-

Electric heating

3 kW

Electrical power and Capacity

Low amp power required (W)

3.800 W

Power required (A) at 230 V

16,5 A

Voltage 230 V

Yes

Water capacity

980 l

Weight of hot tub (Empty/Full)

330 kg / 1.310 kg



Components



Acrylic



Frame



MALEA
76306

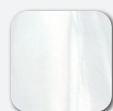
ALEXANDRIA
76307

198 x 198 x 74
5 (3 / 2)

216 x 167 x 74
3 (1 / 2)



44-White



59-Sterling



Ash

Sí

Sí

Sí

Sí

31

26

-

-

3

3

Balboa TP500

Balboa TP500

Ozonator

Ozonator

1 LED

1 LED

Optional

Optional

Yes

Yes

Yes

Yes

Yes

Yes

-

-

1,8 kW / 2,5 HP (2 Vel)

1,8 kW / 2,5 HP (2 Vel)

400 W

-

2 kW

2 kW

2.650 W

2.400 W

11,5 A

10,4 A

Yes

Yes

935 l

780 l

253 kg / 1.181 kg

229 kg / 1.009 kg

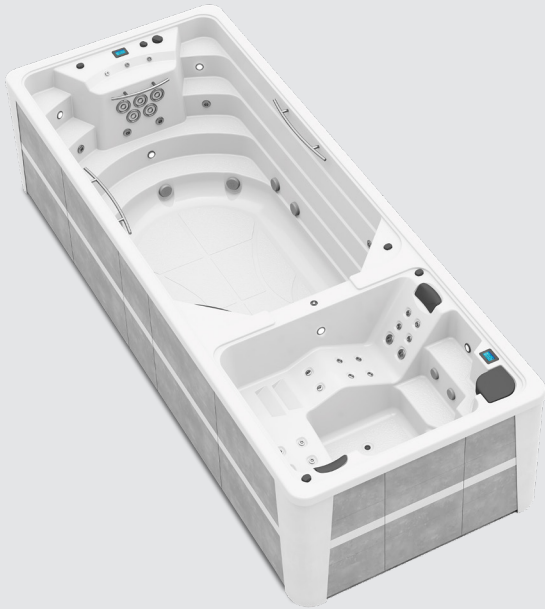
Swimspa Range



Dual is the most compact Swimspa on the market. It has a large bathing space and a complete hydromassage area. At 6 metres long and 2.3 metres wide, it is spacious but compact hot tub: an all-in-one product.

Swimspa Dual

Our leading model



BENEFITS

Maximum Power and Performance

Two completely separate areas, to allow some of you to enjoy the “swim” version while others relax in the hot tub.

Fitness, swimming and rowing

Turn your Swimspa into a health centre: do different exercises with the elastic bands, exercise your body in the rowing zone or comfortably swim inside it, using the pole and harness.



A swimming pool for the whole year

The Swimspa Creta has a heating system that is perfect for maintaining the desired temperature throughout the year. Enjoy healthy bathing, fun times with your family or fitness sessions at home, with no limits.

Technical Information

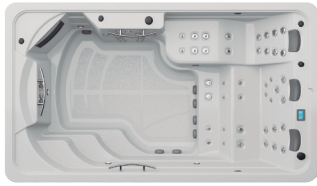


	DUAL 74238	MEDITERRANEA 64414
General Specifications		
REF.		
Dimensions (± 1 cm)	600 x 230 x 138	500 x 230 x 138
Positions (Seats / Loungers)	1 vertical + 4 (2 / 2)	4 (2 / 2)
Acrylic Colour		 44-White
Cabinet Colour		 Coastal Grey
Without Cabinet	Optional	Optional
Characteristics		
ECOSpa double thermal insulation	Optional	Optional
Bluetooth 4.1 audio system	Optional	Optional
Lumiplus chromatherapy LED	Yes	Yes
Stainless steel jets	Yes	Yes
Stainless steel bar	Yes	Yes
Blue Connect	Optional	Optional
Features		
Stainless steel jets	16+5 Turbo Jets / 30 Jets	27+5 Turbo Jets
Waterfalls	-	1
Headrests	3	2
Touch Panel	2 Touch panels	Touch Panel + Auxiliary
Disinfection system	Ultraviolet + Ozone	Ultraviolet + Ozone
Chromatherapy	3 Leds / 5 Leds + Illuminated Accessories	5 Leds + Illuminated Accessories
Wifi Spa Control*	Optional	Optional
Rowing Kit	Optional cod. 74496	-
Frame and Cover		
Heavy duty metal frame	Yes	Yes
Insulating base	Yes	Yes
Isothermal cover	Yes	Yes
Equipment		
Filtration pump	400 W + 200 W	400 W
Massage pump	3 x 2,2 kW / 3 CV + 2,2 kW / 3 HP	3 x 2,2 kW / 3 HP
Electric heating	3 kW	3 kW
Electrical power and Capacity		
Low amp power required (W)	9.500 W	7.000 W
Power required (A) at 230 V	41,3 A	30,5 A
Voltage 230 V	Yes	Yes
Water capacity	7.000 l	8.500 l
Weight of hot tub (Empty/Full)	1.500 kg / 8.500 kg	1.177 kg / 9.677 kg

SWIMSPAS INGROUND - Recommended external equipment: **Kit Swimspa** (cod. 64972)

Mediterranea Inground: 65353 | Creta Inground: 67587 | Compact Inground: 69129

* To integrate the Wifi Spa Control option, the swimspa must include ECOSpa.



CRETA 67203	COMPACT 69128	LAGOON 74237
----------------	------------------	-----------------

400 x 230 x 138	400 x 230 x 138	400 x 230 x 138
4 (2 / 1 / 1)	1 vertical	1 vertical
		
59-Sterling		
		
Urban Grey		Coastal Grey
Optional	Optional	Optional
Optional	Optional	Optional
Optional	Optional	-
Yes	Yes	Yes
Yes	Yes	Yes
Yes	Yes	-
Optional	Optional	Optional
54+4 Turbo Jets	16+5 turbo jets	12
-	-	-
3	-	-
Touch Panel	Touch Panel	TP600
Ultraviolet + Ozone	Ultraviolet + Ozone	Ultraviolet + Ozone
5 Leds + Illuminated Accessories	5 Leds + Illuminated Accessories	1 LED
Optional	Optional	-
Optional	-	-
Yes	Yes	Yes
Yes	Yes	Yes
Yes	Yes	Yes
400 W	400 W	400 W
3 x 2,2 kW / 3 HP	3 x 2,2 KW / 3 HP	1,5 KW / 2 HP
3 kW	3 kW	3 kW
7.000 W	7.000 W	3.400 W
30,5 A	30,5 A	14,78 A
Yes	Yes	Yes
6.000 l	6.000 l	6.000 l
1.177 kg / 7.177 kg	1.150 kg / 7.150 kg	1.150 kg / 7.150 kg

Inground Range



A model designed for six people, with one lounger and five seats. Each position with unique hydromassage options. The hot tub allows you to enjoy a complete hydromassage circuit.

This hot tub for private use can be built into the ground or into decking. This model has a high-performance filtration system with a sand filter.

Thalassa E Inground

Our leading model

BENEFITS

A thermal Spa

Enjoy each of the hot tub's positions. Whether you are seated or lying down, you'll find a different hydromassage option in each part of the hot tub. Relax and feel the comfort that you get from the foot massage. The option of enjoying a hydromassage and the temperature of the water will make this space a thermal paradise.



Proven ergonomics

One of our aims is to ensure that the soft shapes of hot tubs are perfectly moulded to the user's body. This model is shaped pleasantly for full-body comfort. Easy to access and with various depths to allow every user to find the right place for them.



Outstanding filtration

The filtration system's sand filter ensures excellent water filtration, so that your hot tub is always clean.

Technical Information



EVOLUTION 70 INGROUND

THALASSA E INGROUND

REF.	49722	78678		
General Specifications				
Dimensions (± 1 cm)	233 x 233 x 90	216 x 216 x 90		
Positions (Seats / Loungers)	5 (3 / 2)	6 (5 / 1)		
Water capacity	1.610 l	980 l		
Empty hot tub weight	378 kg	330 kg		
Full hot tub weight	1.988 kg	1.310 kg		
Cabinet Colour	 44-White	 59-Sterling	 65-Alba	 64-Pearl Shadow
Characteristics				
Number of jets	56	28		
Air nozzles	16	16		
Waterfall	-	-		
Headrests	3	3		
Touch Panel	1	1		
Chromatherapy LED spotlights	1 LED	1 LED		
Stainless steel jets	Yes	Yes		
Stainless steel bar	-	-		
Frame and Cover				
Metal frame	Yes	Yes		
Insulating ABS base	Yes	Yes		
Isothermal cover	Optional	Optional		
Compact kit				
Code	41849CE000	41993CE000		
Filter	Ø 500	Ø 500		
Filtration pump	0,6 Kw	0,6 Kw		
Massage pump	2 x 2,2 Kw / 3 HP	1 x 1,8 Kw / 2,5 HP		
Air massage pump	900 w	900 w		
Electric heating	3 Kw	3 Kw		
Ozonator	Optional	Optional		
Low amp power required (W)	5.200 W	3.600 W		
Power required (A) at 230 V	25,4 A	15,7 A		
Voltage 230 V	230 V o 400 V III	230 V o 400 V III		



RONDA 30

49859

Ø205

5 (5 / -)

780 l

307 kg

1.445 kg



27-Silver

20

10

-

-

1

1 LED

Yes

-

Yes

Yes

Optional

41993CE000

Ø 500

0,6 Kw

1 x 1,8 Kw / 2,5 HP

900 w

3 Kw

Optional

3.600 W

15,7 A

230 V o 400 V III



Commercial Range



The Olympia model hot tub is designed for highly demanding public facilities. It is the perfect model for anyone who wants to offer their customers a high-quality massage by providing a large bathing space with different positions.

Olympia Hot Tub

Our leading model

High-quality finish

Each of the hot tubs in the Commercial range is manufactured with the finest materials to ensure the product's performance in your business.

Systems with added value

The hot tubs in the Commercial range not only offer the customer a product designed for hydromassages. With its LED lighting options, it can be used as a genuine chromotherapy treatment centre.

Professional filtration

The Commercial hot tubs' filtration systems are designed for intensive product use. The size of each pump ensures greater durability and reliability. Filtration is performed by professional filtration pumps and sand filters, in order to comply with the most stringent regulations.



Roma hot tub

Technical Information



	TOKYO 70	OLYMPIA
REF.	53990	73587
General Specifications		
Dimensions (± 1 cm)	340 X 240	365x280
Positions (Seats / Loungers)	7 (6 / 1)	12 (12 / -)
Water capacity	2.200 l	2,490 l
Empty hot tub weight	502 kg	373 kg
Full hot tub weight	2.702 kg	2,863 kg
Colour shell finish	 44-White  46-Blue Marble*  59-Sterling	
Characteristics		
Number of jets	58	16
Air nozzles	21	16
Colour jets	Inox	White
Headrests	2	-
Waterfall	Optional (cod. 53993)	-
Spotlight	Yes	Optional
Chromatherapy LED spotlights	4 LED	Optional 1 LED
Metal frame	Yes	Yes
Isothermal cover	Optional	Optional
Piezoelectric push buttons	3	2
Compact kit	Kit 75 3M	Kit 75 2M
Surge tank		
Surge tank	2.000 l.	2.000 l.
Hot tub filtration system	 43639	 16412
Filter	Ø 650	Ø 650
Filtration pump	0,82 Kw	0,82 Kw
Massage pump (P1)	2 x 1,81Kw+2,7Kw	2 x 1,81 Kw
Blower pump	1,3 Kw	1,3 Kw
Electric heating	6 Kw	6 Kw
Ozonator	Optional	Optional
Water/water heat exchanger 20 Kw	Optional	Optional
Push Buttons / Control	Piezoelectric	Piezoelectric
Low amp power required (W)	14.485 W	11.760 W
Power required (A)	27,5 A	18,9 A
Voltage	400 V III	400 V III

* While stocks last



ROMA 40769	ODISEA 20 45709	VERONA 70550	MIRAGE 40 E 44630
Ø 300	Ø 230	228 x 228	Ø 250
9 (9 / -)	5 (5 / -)	5 (3 / 2)	6 (6 / -)
2.290 l	1.120 l	1.200 l	1.450 l
310 kg	175 kg	147 kg	393 kg
2.600 kg	1.295 kg	1.347 kg	1.763 kg
18	8	24	25
18	10	12	12
White	White	White	Inox
-	-	-	-
-	-	-	-
Yes	Optional	Yes	Yes
Optional 1 LED	Optional 1 LED	Optional 1 LED	Optional 1 LED
Yes	Yes	Yes	Yes
Optional	Optional	Optional	Optional
2	2	2	2
Kit 75 2M	Kit 50/75	Kit 75 2M	Kit 75 2M
2.000 l.	1.000 l.	1.000 l.	1.000 l.
16412	04015	16412	
Ø 650	Ø 500	Ø 650	Ø 650
0,82 Kw	0,60 Kw	0,82 Kw	0,82 Kw
2 x 1,81 Kw	1,4 Kw	2 x 1,81 Kw	2 x 1,81 Kw
1,3 Kw	1,3 Kw	1,3 Kw	1,3 Kw
6 Kw	6 Kw	6 Kw	6 Kw
Optional	Optional	Optional	Optional
Optional	Optional	Optional	Optional
Piezoelectric	Piezoelectric	Piezoelectric	Piezoelectric
11.802 W	9.362 W	11.802 W	11.760 W
18,9 A	18,1 A	18,9 A	18,9 A
400 V III	400 V III	400 V III	400 V III

