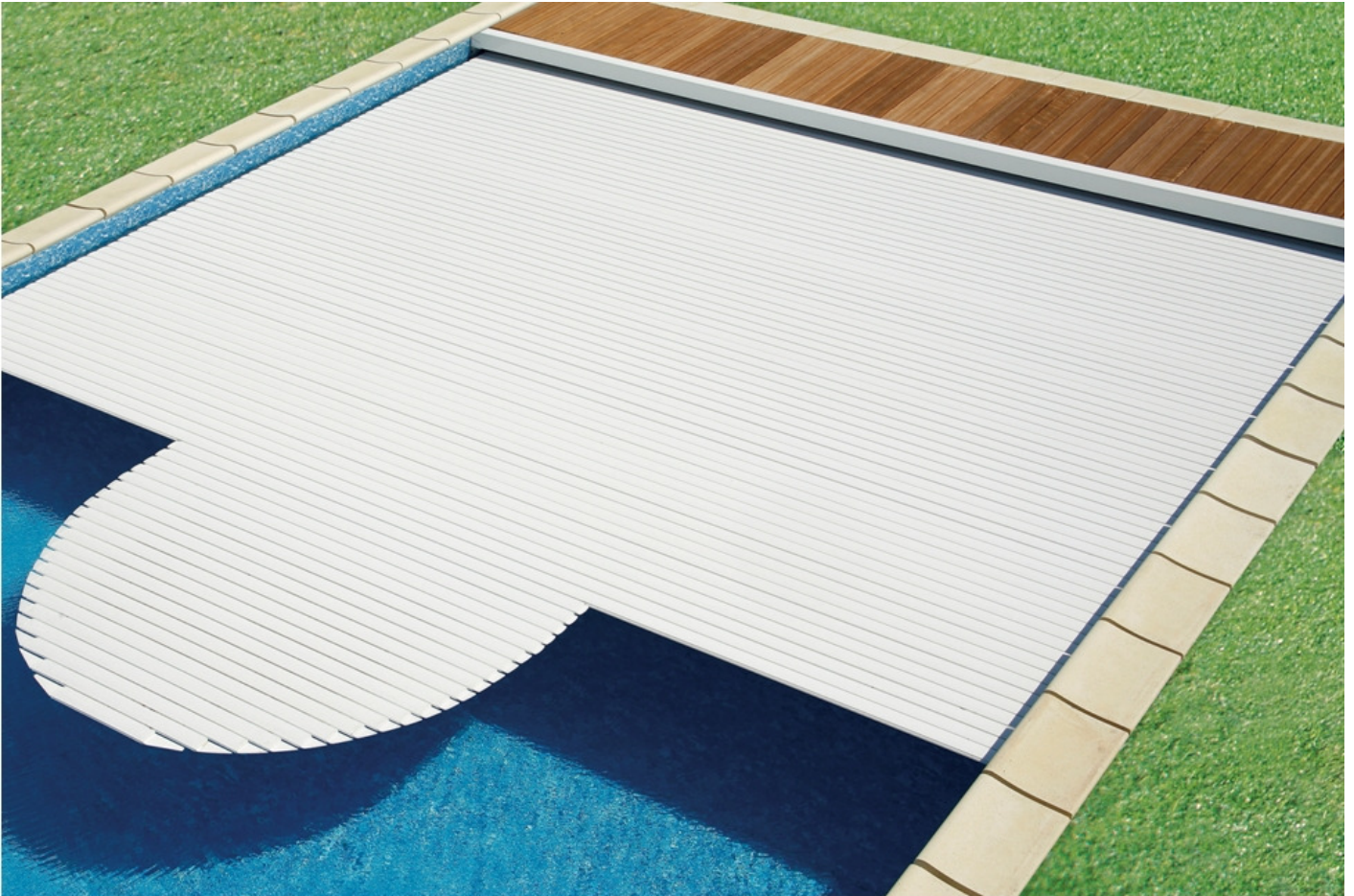


CONSTRUCTION WORK

Conforms to standard NF-P 90-308

ROUSSILLON



Installation manual

Tables of contents:

1. PLACEMENT OF EMBEDDED PARTS..... 3

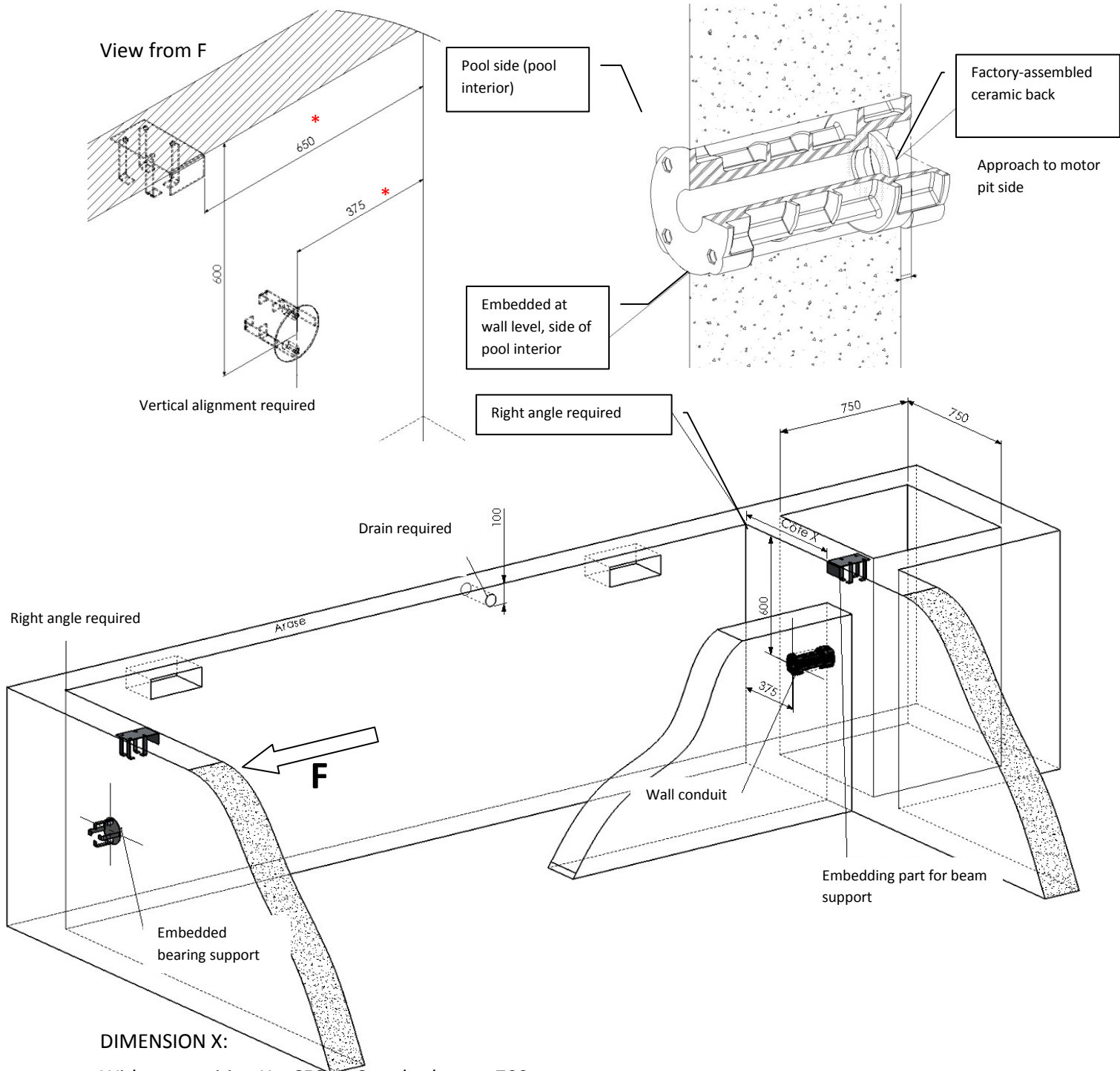
2. GENERAL INSTALLATION FOR A POOL WITHOUT PARTITION 4

3. GENERAL INSTALLATION FOR POOL WITH PARTITION..... 5

4. ELECTRICAL WIRING INSTALLATION 6

5. EMBEDDED PARTS..... 7

1. PLACEMENT OF EMBEDDED PARTS



DIMENSION X:

Without partition X = 650 => Standard cover 700

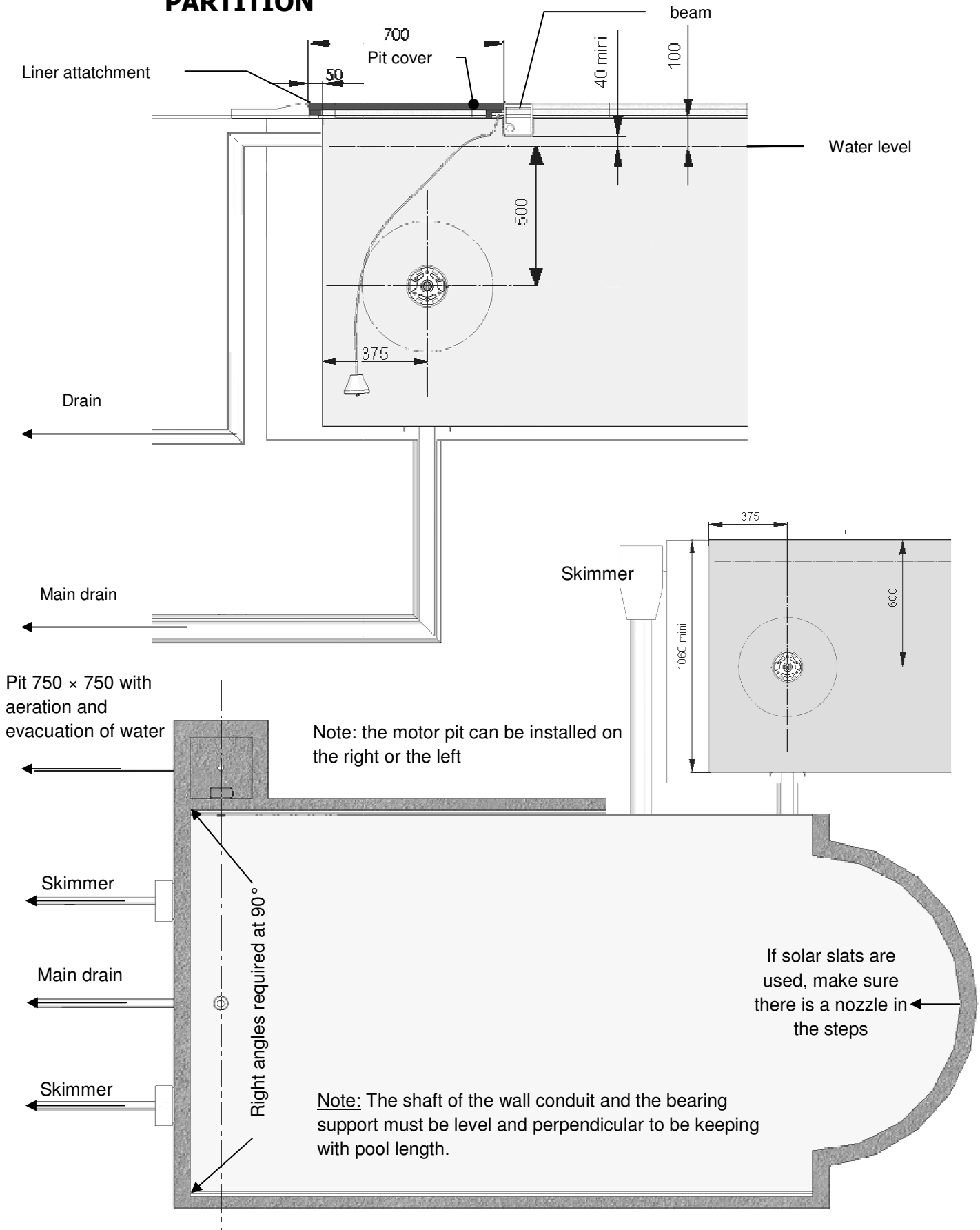
With partition X = 900 => Standard cover 950

With different X => Cover according to measurements

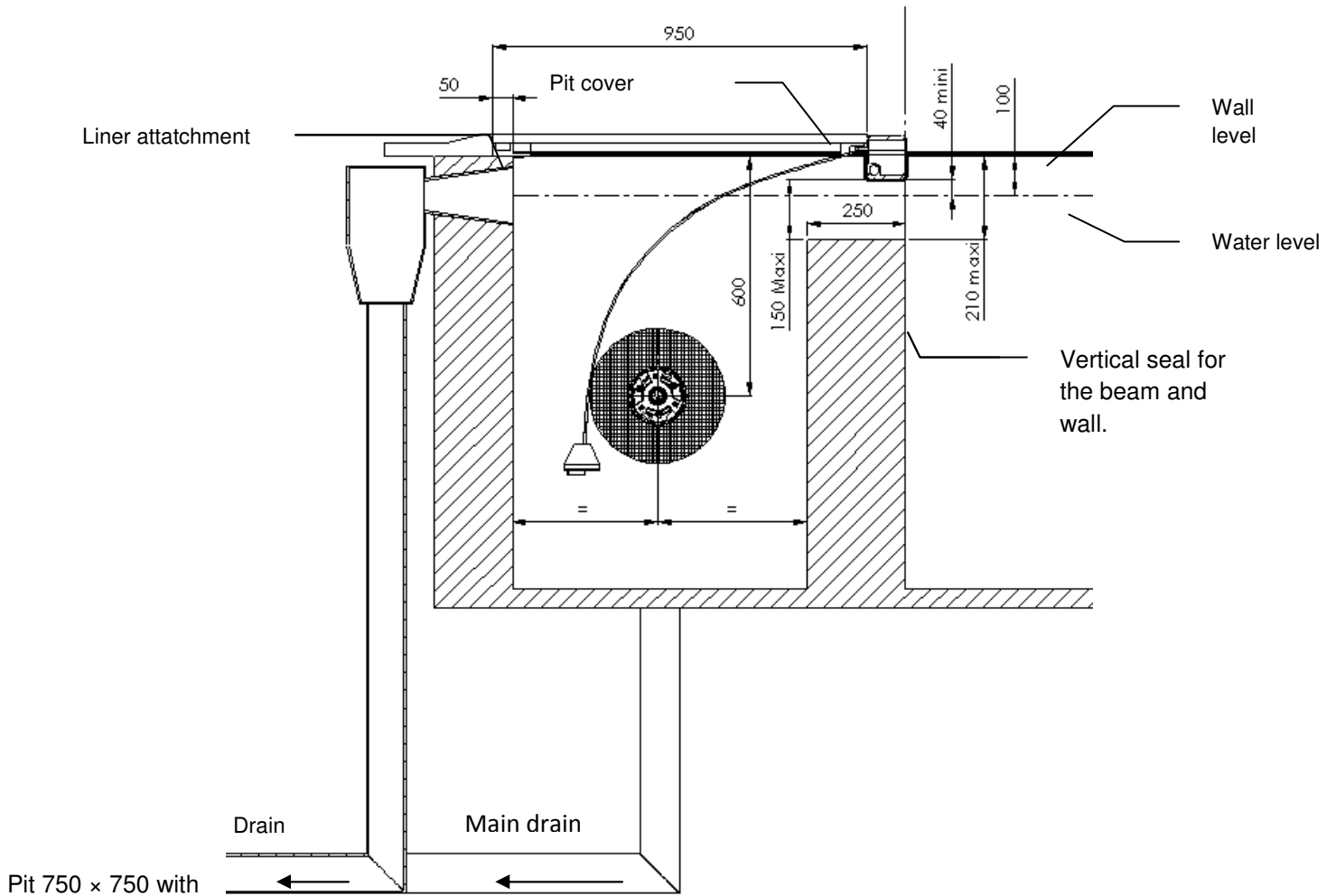
* These dimensions are determined for a standard pool. The dimensions are dependent on the diameter of winding of the slats on the shaft, and the used shaft type. For any other information, please contact us.

EMBEDDED PART
Reproduction strictly prohibited
Measurements in mm
Nota N-2003-08-01

2. GENERAL INSTALLATION FOR A POOL WITHOUT PARTITION

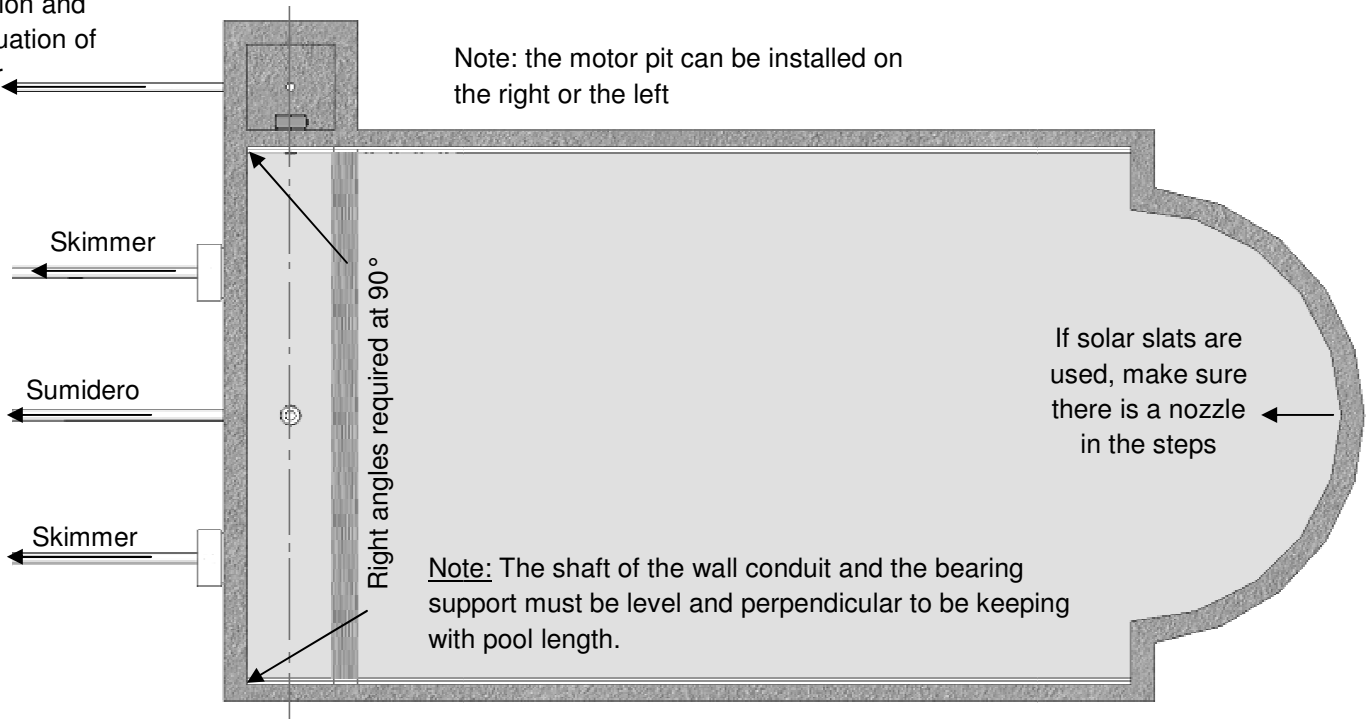


3. GENERAL INSTALLATION FOR POOL WITH PARTITION

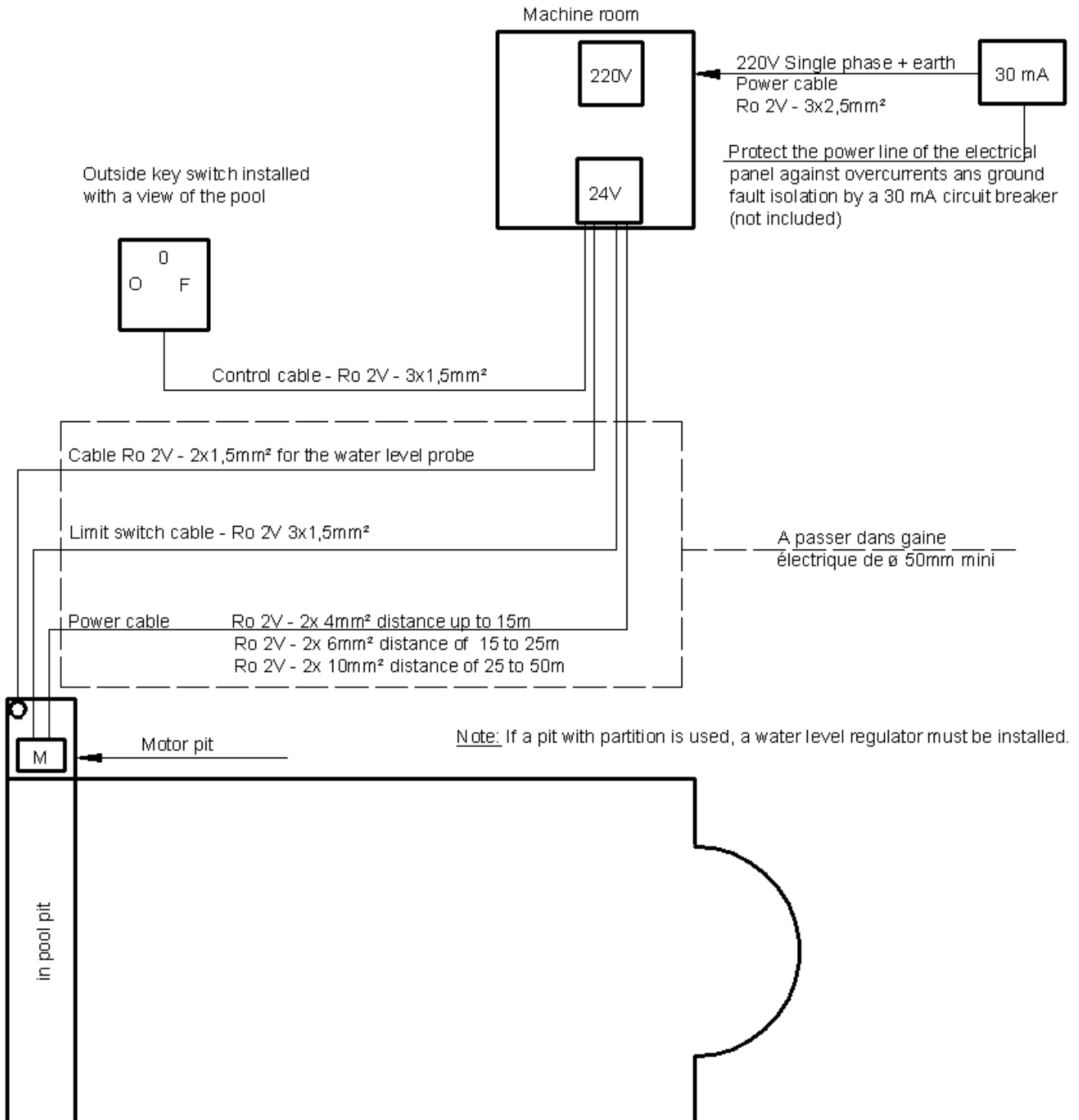


Pit 750 x 750 with aeration and evacuation of water

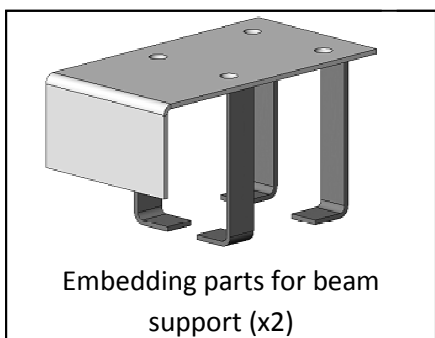
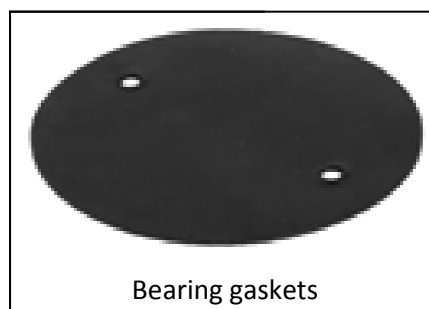
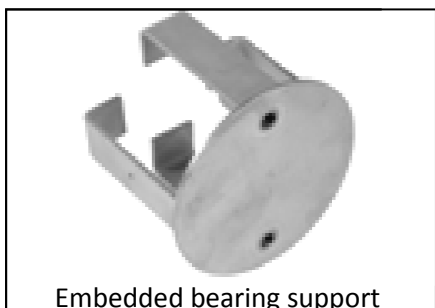
Note: the motor pit can be installed on the right or the left



4. ELECTRICAL WIRING INSTALLATION



5. EMBEDDED PARTS



Recommendations for placement:

The parts to be embedded must be positioned very carefully, in order to ensure perfect placement and proper operation of the automatic pool cover.

Check:

- That the walls of the reel pit are perfectly vertical, using a plumb line.
- That the pit has 90° Sharp (not rounded) angles.
- The level and alignment of the conduit (careful with the coupling direction: mark on the “motor side” part) and the embedded bearing, using a viewer or laser.
- That the conduit and the embedded bearing support are properly aligned, and that the line joining them is perpendicular to the length of the pool.
- An effective overflow **MUST** be installed (min outlet Ø 50 mm).
- The cover of the pit must be duckboard (aluminium, wood or composite) and following our technical engineering construction. For any other installation, please consult us.

We reserve the right to change all or part of the features of the articles or contents of this document, without prior notice.