

# ELITE CONNECT



## THE BRAIN OF YOUR POOL

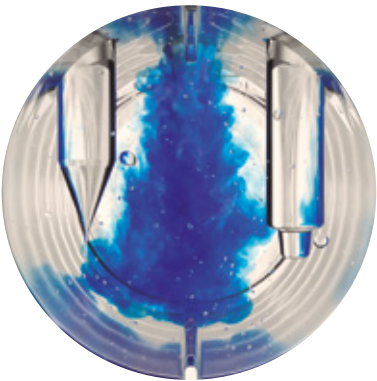
Elite Connect is an intelligent, evolutionary salt chlorinator that not only disinfects the water, but also **acts as a central exchange for the operation of multiple units** in a single device, which you can adjust using the touchscreen or by remote control. Its four input and output relays let you configure the operation of the filter pump, lighting and heating, among others.



## 50% LONGER SERVICE LIFE AT MAXIMUM PERFORMANCE

With use and lack of maintenance, conventional salt electrolysis cells deteriorate in terms of performance and service life. With the new generation of **CellGuard®** cells, we obtain an electrode life of up to **18,000 hours** with no loss of chlorination efficiency.

The **patented technology** uses pH injection to remove limescale and keep the electrode plates as clean as new, resulting in minimal maintenance.



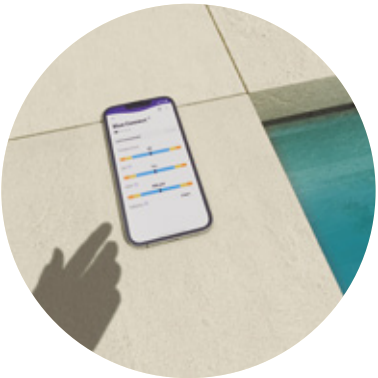
## FULL RANGE

Solutions for every pool: standard or low salinity (1 g/L), 4 chlorine production modes (normal, boost, covered and biopool), optional "S-Driver" modules for redox (ORP) or free chlorine (PPM) management, as well as the "S-Driver" for the variable speed pump (VSP).



## INTEGRATED CONNECTIVITY

All the pool information is available on the **Fluidra Pool®** app thanks to integrated Wi-Fi and Bluetooth connectivity.



## GUARANTEED QUALITY

Three-year warranty for Elite Connect and five years for the CellGuard® cell.





RANGE

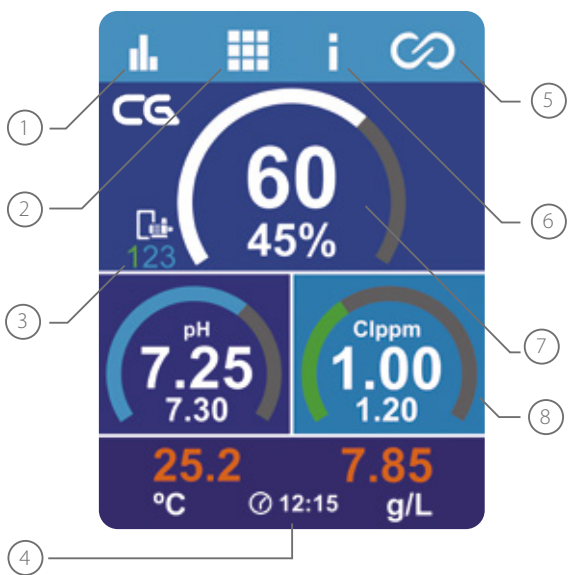
Models	12	12 LS	24	24 LS	32	32 LS	42
Code	77166	77408	77167	77409	77168	77410	77169
Chlorine production	12 g/h		24 g/h		32 g/h		42 g/h
Pool volume*	50 m³		100 m³		150 m³		200 m³
Required salinity (min-max)	5 g/L (4.0-12 g/L)	1-2 g/L (1.0-5.0 g/L)	5 g/L (4.0-12 g/L)	1-2 g/L (1.0-5.0 g/L)	5 g/L (4.0-12 g/L)	1-2 g/L (1.0-5.0 g/L)	5 g/L (4.0-12 g/L)
Flow detector kit	Included						
pH control	Included						
pH regulation (dosing pump)	Included						
Redox control (ORP)	S-Driver ORP (code 77758)						
Control of free chlorine (PPM)	S-Driver PPM (code 70052)						
Speed pump control variable	S-Driver VSP (code 73471)						
Easy connection and control of pool equipment (4 water level sensor inputs)	Relay box kit (code 72454)						

\*Pool volume for water at 28°C. Volume of +/-20% if the water is colder or warmer, respectively.

ACCESSORIES



DESCRIPTION OF THE USER INTERFACE

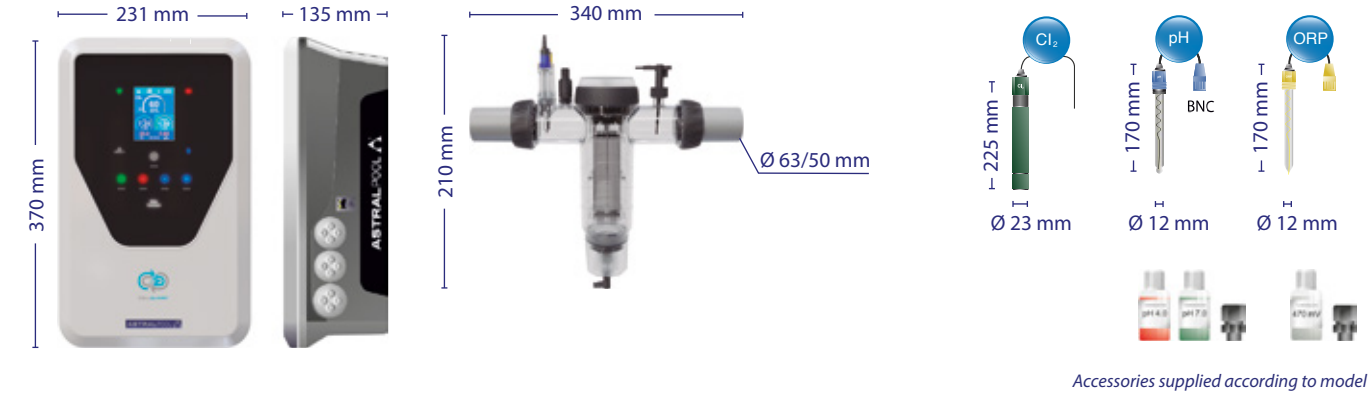


1. Data log access key
2. System CONFIGURATION key
3. CHLORINATION display/setpoint (+ pump speed information with S-Driver VSP module)
4. TEMPERATURE/SALINITY/TIME display
5. FLUIDRA POOL access key
6. Key for accessing GENERAL INFORMATION about the system
7. Chlorination and setpoint display
8. ORP/CHLORINE (PPM) value/setpoint display (according to model)

SPECIFICATIONS

	Power supply	Elite Connect Cellguard pH 12 & LS	Elite Connect Cellguard pH 24 & LS	Elite Connect Cellguard pH 32 & LS	Elite Connect Cellguard pH 42
	Service voltage	230 V – 50/60 Hz			
	Consumption	0.6 A	1 A	1.1 A	1.4 A
	Fuse	2 AT	3.15 AT	4 AT	4 AT
	Output	6 A x 2	12 A x 2	16 A x 2	6 A x 7
	Production	12 g/h	24 g/h	32 g/h	42 g/h
	Pool size (water up to 25°C, volume -25% if temperature >25°C)	50 m³	100 m³	150 m³	200 m³
	Salinity	5 g/L (min-max = 5-12 g/L)-Low salt = 1-2 g/L (min-max = 1-4 g/L)			
	Water temperature	Max 40°C			
	Outer casing	ABS			
	Polarity reversal	2h, 3h, 4h, 7h and test (adjustable in the configuration menu)			
	Production control	0-100%			
	Flow detector (gas)	Yes (config. menu: active-inactive)			
	Mechanical flow sensor	Yes (config. menu) active-inactive)			
	Production control for cover	10...100%. Voltage-free contact			
	External production control	Yes, two levels (0, set%), voltage-free contact			
	Electrode Diagnostics	Yes			
	pH safety shutdown	Yes, 1...120 mins			
	Salinity monitoring	Yes (in real time)			
	Salt alarm indicator	Yes, high/low			
	System configuration menu	Yes			
	Remote control	Yes (integrated Wi-Fi connectivity and Fluidra Pool app)			
	Inputs-Outputs	2 configurable 230V auxiliary, 4 output relays, 4 digital inputs and 1 heating contact			
	Cell	Elite Connect Cellguard pH 12 & LS	Elite Connect Cellguard pH 24 & LS	Elite Connect Cellguard pH 32 & LS	Elite Connect Cellguard pH 42
	Cellguard electrodes	Tech grade: 18,000 h			
	Min. flow rate (m³/h)	3	4	6	8
	Number of electrodes	8 LS	10 LS	12 LS	13
	Material	Methacrylate derivative			
	Connection to pipes	Glued PVC Ø 63/50 mm			
	Maximum pressure	1 kg/cm²			
	Working temperature	15-40°C max.			
	Description	Elite Connect Cellguard pH 12 & LS	Elite Connect Cellguard pH 24 & LS	Elite Connect Cellguard pH 32 & LS	Elite Connect Cellguard pH 42
	Measurement range	0.00-9.99 (pH) / 0-999 mV (Redox-ORP)			
	Control range	7.00-7.80 (pH) / 600-850 mV (Redox-ORP)			
	Precision	+/- 0.01 pH / +/- 1 mV (Redox-ORP)			
	Calibration	Automatic (pH-ORP standards, PPM electronic card)			
	Control outputs (pH)	One 230 V / 500 mA output (dosing pump connection)			
	pH/ORP sensors	Epoxy body, single joint			
	PPM sensor	PVC body + diaphragm			

DIMENSIONS



ELITE CONNECT  
CELLGUARD PH  
THE FUTURE OF SALT CHLORINATION